

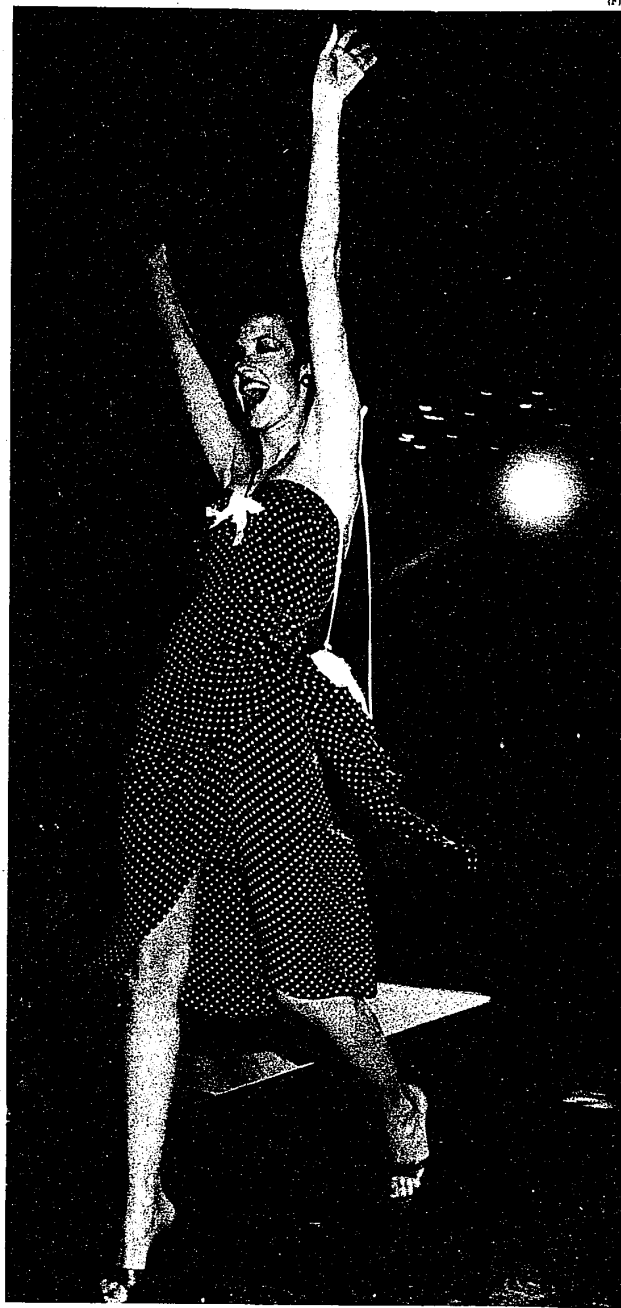
Suburban Life

Thursday, May 31, 1979

(F11C)



Looking mean in her gang-style leather suit (above left) was all an act by the model, but the Claude Montana leathers were a big hit and for real. Above, evening glittery jackets over knife pleated skirts also made the scene.



A show that moved and treated the eyes and ears, it featured fashions like this body-clinging polka dot dress, bare on top and with a revealing wrap and slit.

JDF fashions show with disco rhythms

By SHIRLEE IDEN

More than 1,000 guests who want to know what's happening in diabetes re-

search also found out what's happening in fashion last Tuesday.

The large crowd assembled for the annual luncheon and fashion show of the Juvenile Diabetes Foundation at the Raleigh House in Southfield.

In the spirit of JDF, no flowers brightened the tables. Those who are enlisted in the fight to lick juvenile diabetes through research are also determined every penny possible must be funneled to that end.

In a day when large fashion events are on the wane, participants converged from Grosse Pointe, Rochester and Farmington to take part and stand up and be counted in the diabetes battle.

From her new shop in the Somerset Mall in Troy, Linda Dresner brought a lively show of what's happening in fashion — and with a disco beat.

It was a show that moved and was a treat to the eye and ear alike. Animated models danced, strutted and paraded a string of eye-catching fashions.

Fashion names whose creations were part of the showing included Claude Montana, Laura Biagioli, Vicky Teal and many more.

Color, bareness and body-hugging motifs were the principal themes of the show which opened with leisure outfits done in navy blue and white.

Selections included skirts, pants, and shorts shown with T-shirts, bandeaus, halter tops and more classic shirts.

Bright splashes of green, plum, turquoise, shocking pink and yellow were

interspersed in fashions meant to blossom at all hours of the day and night.

Blazer jackets made the scene often over a bandeau, camisole or halter top and tunics went to all lengths as part of a "today" look.

And big news could be read in the repeated appearance of wide belts cinching slim waists in leather, suede and other fabrics, often on a bright note such as red or mustard.

Jeans stayed home for this show, but pants are still a big number, often tapered and sometimes ending above the ankle bone in a look most eyes are yet unaccustomed to.

If you've heard that slits are important this season, you heard correctly. And most go with skirts in the shorter lengths that end just below the knee.

A bumper crop of short-cropped sweaters kept bouncing by, shown over pants and skirts alike.

Polka dots are definitely back. And if leg of mutton seems old fashioned on the table, the leg of mutton sleeve is back on the fashion menu.

The biggest audience response came in the show's "suede suite" when creations in the soft, supple fabric were modeled in grey, tan, gold, black, pale green, suede and a bright patchwork multi-color.

Shiny leather, matte suede and even perforated leathers won applause and the body language of the models was so captivating they were a good show in themselves.

Even when one lively model backed right off the runway, she jumped right back on to strut backstage.



Ladylike clothes like this all-white outfit featured short cropped sweaters with lots of texture, shorter skirts and the small bead look.



At left, a lineup of animated models show Claude Montana's lively leather fashions. Above, perforated suede sports a tasseled waist tie and shows lots of leg. At right, a fanny-hugging tunic with deep V is shown over dark pants and trimmed with a glittery disco bag on one shoulder.

Photographed
by
Gary Friedman

