

# Festival includes children's productions



Detroupe, the Detroit Recreation Mime Troupe, features (from left) Tim Holton, Scott McCue, Ria A. Kimber, Clifton Lee Shaw and Kim Carrey.

The Attic Theater will present four children's productions as a featured part of its second annual Performing Arts Festival.

During the June 13-July 1 festival, four different groups will have 1 and 3 p.m. time slots Saturday and Sunday.

The shows include magic, music, dance and mime. Tickets are priced for children and for adults. Call the Attic Theater, 963-7789, for ticket information.

The schedule includes:

**MAGIC & ALL THAT JAZZ** — a group of five performers who will offer children magic, music and dance. Saturday and Sunday: June 16, 23, 30, 1 p.m.

**RAINBOW CELEBRATION** — per-

forms "Don't Give Up the Ship," an original musical adaptation of the story of Noah and the Ark.

The play follows Noah and his three favorite traveling companions, a mimicking parrot, a boxing kangaroo and an eight-legged caterpillar. Saturday and Sunday: June 16, 23, 30, 3 p.m.

**OTHER THINGS & CO.** — has performed for thousands of elementary school children in the metro area. Their performance has catchy tunes, mystery, humor excitement and fantasy. Saturday and Sunday June 17, 24, July 1, 1 p.m.

**DETROUPE** — Detroit's traveling mime troupe, with story theater, clowning around and general fun stuff. Saturday and Sunday, June 17, 24, July 1, 3 p.m.

## Jazz concert benefits school

A benefit concert for the Detroit Children's School, an alternative grade school, is slated for Wednesday, June 13, from 7:30-11 p.m. at the Community Arts Auditorium, Cass at Kirby (Wayne State University), Detroit.

The concert will revolve around two of Detroit's top jazz groups — Ursula Walker and the Buddy Budson Quartet, featuring Leslie Daniels, drums; Dan Kotton, bass; Buddy Budson, keyboards; and guitarist to be announced,

along with Marcus Belgrave and the New Detroit Jazz Ensemble, featuring the 18-piece big band. Ms. Walker also will sing some numbers with the big band.

After the concert a party in honor of all the people who have helped to support the Children's School will be held at the school, 835 Holden, Detroit.

For further information interested persons may call 873-1141 (Detroit Children's School).

**CASH FOR  
YOUR DIAMONDS  
AND GOLD JEWELRY  
IMMEDIATELY UPON PRESENTATION**

**ROBERT GALE, INC.**

*Fine Jewelry*

34 years of diamond jewelry experience

IN THE ARCADE AT  
725 SO. ADAMS ST., BIRMINGHAM, 644-6650

AMPLE FREE PARKING

Announcing the opening of  
Northland Family Planning Clinic—West  
in a new location to serve  
the Ann Arbor & Downriver areas



- Free Pregnancy Tests—immediate results
- Quality Health Care—lowest fees
- Tranquilizing Intravenous Injection
- Convenient Molar Locations
- Medical and Insurance Benefits—can cover all medical fees (Master Charge and Visa accepted)
- Board Certified Gynecologists—experienced professionals assure comfort, friendliness and safety

**(313) 559-0590 Southfield area**

**(313) 941-1810 Ann Arbor and Downriver area**

All calls confidential

**NORTHLAND**  
FAMILY PLANNING CLINIC INC.

## AUTO SHOW CARPET SALE!

Slightly used national Auto Show and Convention  
Carpeting now available in a wide range of colors and styles.

**\$100 to \$250 per sq. yd.**  
20,000 sq. yds. now available  
Length up to 200' long

**DONALD E. McNABB CO.**

22150 W. 8 Mile Rd. (W. of Lahser) 357-2626  
Hours: Mon.-Thurs. 9-5 Friday 9-9 Sat. 8 a.m. till noon

## DOLL EXHIBITION & SALE

JUNE 11 thru JUNE 16, 1979

Featuring for your enjoyment  
"THE PARISH COLLECTION"

with over 200 rare quality antiques including Wax, Paper Mache, Cresch, French Bisque, Parian & Leather...by famous

names like Jumeau, Montanari, Greiner, Belton, Steiner, F.G. & Biedermeier.

See French Fashions, Two-faced baby Steiner Mechanical, Aunt Gertrude, Milliners' Model, English Pedlar Doll, Bisque Clown Twirler, etc.

PLUS: All the finest in Modern Dolls & Reproductions: Madame Alexander, Effanbee-Sasha-Peggy Nibel-Dolls by Gert-C.R. Club-Alfred (Bisque)-Suzanne Gibson-Glenn

**BIG SAVINGS ON A WIDE SELECTION OF  
MODERN, ANTIQUES  
& COLLECTIBLES**

- Bring your favorite doll for free appraisal!
- FREE ESTIMATE ON ANTIQUE DOLL RESTORATION
- Antique Dolls sold on consignment



*The Doll Hospital &  
Toy Soldier Shop*

3947 12 Mile Road Berkeley Phone 543-3115  
MON., TUES., WED., THURS. & SAT. 10-6, FRI. 10-8



**BIRMINGHAM ESTATE.** Palatial Tudor graces two beautiful, rolling acres. Sweeping circle drive leads to hotel-size foyer and home with all of the custom amenities. 626-9100. \$245,000.



**CENTRAL AIR,** attic fan, automatic sprinklers and lovely patio—summer comfort in this stately Farmington Hills Colonial in prize Canterbury Commons. 626-9100. \$124,900.



**UNDENIABLE CHARM** and size in Rochester. Enjoy a beamed library, big fireplaced family room, 4 bedrooms plus Central Air, garage opens, beautiful decor. 651-8850. \$108,900.



**CRANBROOK VILLAGE,** top value area with Birmingham schools. For the growing family with 4 bedrooms, 2½ baths, fireplaced family room plus other bedrooms. 626-9100. \$99,600.



**GREAT STARTER** home, in lovely Beverly Hills. 2, possibly 3 bedrooms, nice kitchen, large, very nice living room, basement and much more. 557-6700. \$50,900.



**EXECUTIVE ESTATE** in the City of Bloomfield Hills. Two acres of pure natural beauty encompass expansive Quad-level with room after room of luxury features. 647-5100.



**OVERLOOKS GREAT OAKS** fairways and pool. 1805 sq. ft. Cande has 3 bedrooms, 2½ baths, ceramic tile foyer and kitchen, fireplace, 2½ car garage. 651-8850. \$119,900.



**FLOWING STREAM** borders treed yard of this tastefully decorated, 3 bedroom Ranch with fireplaced family room, 2 full baths, Central Air. Immediate possession. 851-8100. \$106,900.



**NEW ENGLAND** Ranch on private garden acreage in Southfield. Many custom features highlight sharp interior. Library or fourth bedroom, family room, 2 fireplaces. 626-9100. \$79,900.



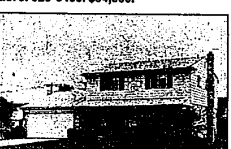
**LOVELY brick Ranch** in desirable Southfield area. 3 bedrooms, 2 baths, family room with parquet floor, basement and more. 557-6700. \$78,500.



**PINE LAKE** near-by. Spacious Quad-level offers fireplaced family room, beautiful rec room, 4 bedrooms, Central Air, Bloomfield Hills schools. Very sharp! 626-9100. \$148,900.



**SUPER FAMILY** community includes this charming Colonial. 22' x 14' family room has 36' of windows. Gas BBQ, mature maple and fruit trees on near acre. 626-9100. \$94,500.



**LIVE IN Cranbrook Village,** enjoy Birmingham schools. 4 bedrooms, 2½ baths, fireplaced family room plus new carpeting, intercom, gas BBQ, etc. Immaculate! 646-6000. \$93,900.



**BEAUTIFUL Lathrup Village** Mansard. Spacious with library and fireplaced family room plus 4 bedrooms. Possible first floor laundry, Central Air, gas BBQ. 557-6700. \$91,500.



**BEVERLY HILLS** charmer with 3 bedrooms, family room with breakfast bar, fireplace, finished basement, many built-ins. 557-6700. \$76,900.

**Chamberlain**  
REALTORS®

• BIRMINGHAM  
646-6000

• BLOOMFIELD HILLS  
647-5100

• WEST BLOOMFIELD  
851-8100

• FARMINGTON HILLS-  
FRANKLIN  
626-9100

• SOUTHFIELD-  
LATHRUP VILLAGE  
557-6700

• ROCHESTER  
651-8850  
• TROY  
689-8900

