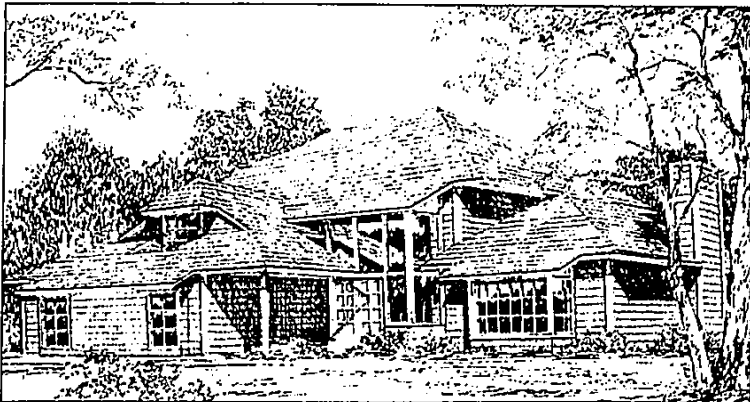


# New Orchard Lake sub features large lots, homes



LaPlaya features large homes, and an emphasis on outdoor recreation.

Translated from Spanish to English, LaPlaya means beach; and outdoor activity is the theme for a new subdivision in Orchard Lake Village.

Controlled by an architectural committee, home plans for the sub must be approved for design, size and placement on the lot. Spokesmen for the development say no two homes will look alike. Houses range in size from 2,600 square feet to 5,000

square feet. There are paved roads and underground utilities throughout the subdivision.

Presently, there are four models to view. An additional 14 lots remain for the buyer interested in a custom home.

Minimum lot size is ¼-acre. The development also features an 11-acre private park, and beach privileges on Upper Straits Lake.

## PROTECTION LIKE NEVER BEFORE...



HOME OWNERS WARRANTY

## GRAND OPENING Golden Gate Square



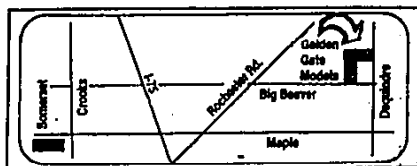
**The Livingston.....from \$95,000**

Our Welcome Mat's out at Golden Gate Square -- Troy's newest and finest community. Custom quality homes at prices you can afford. This weekend, come see for yourself our four new and unique 2-story homes and our "flexible" ranch plan. Also, seven "spec" homes are available for immediate to 30 day occupancy. Buy now and save at our Grand Opening prices. At Golden Gate Square. Big Beaver & Dequindre Roads. In Troy.

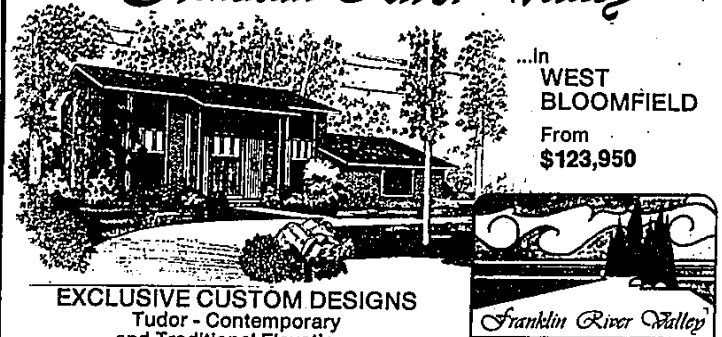
Uncommon Homes! Close to Everything! Priced from the mid '80's  
(Some treed lots still available)  
Built by St. Croix Builders, Inc.



Models Open:  
Weekdays 1-8  
Weekends 12-5  
(Closed Thursdays)  
528-0346



## Franklin River Valley



...in  
**WEST  
BLOOMFIELD**  
From  
**\$123,950**

**EXCLUSIVE CUSTOM DESIGNS**  
Tudor - Contemporary  
and Traditional Elevations

• EXCELLENT LOCATION • BIRMINGHAM SCHOOLS • SURROUND-  
ED BY LAKES AND COUNTRY SETTING • INCLUDING THE BINDER  
HOMES STANDARD OF QUALITY FEATURES

**855-1616 or 474-9300**

Sales office located on Independence Lane, just South of  
Walnut Lake Rd., East of Middlebelt, Mon.-Sat. 1-6; Sun.  
1-7; or by appointment. (Closed Thursday)

**ROBERT S. BINDER BLDG. CO., INC.**

Sales by:  
**BINDER HOMES REAL ESTATE CO.**

**BINDER  
HOMES**

## GRAND OPENING!



**The Shenandoah**

**Clyde Rd.**

**Hartland**

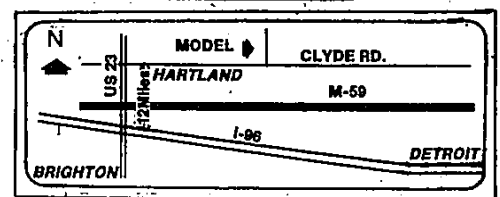
The dream home that came true. This Scholz Design home is the one you saw featured in 1001 Decorating Ideas. It has been built right here in this area -- in Hartland -- and is open for inspection. Visit us now if you are planning to build or buy a new home. We've got a showcase of plans for you!

Built by

**Heritage Homes**  
Hartland, Michigan



**OPEN SUNDAYS**  
**1-6 JUNE & JULY**  
**855-1636**



See also the Shenandoah, available for 60 day occupancy in Plymouth Township. Built by Builder's Contracting, Inc.