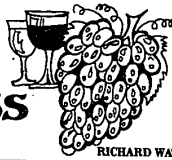


From the Wine Press



RICHARD WATSON



Judging the jugs

The typical wine shopper, needing volume more than finesse as he often does, approaches the jug wine selections, if he is wise with some trepidation.

Facing him are an almost too generous number of choices, ranging from names rather well known to some rather esoteric labels.

Making a good choice is important. While they are not costly, per se, the sheer quantity involved makes a bad choice hard to live with. After all, there is little so large as a bad bottle of wine or so small as a good one.

So some help is offered.

First, the nomenclature. If the name is gen-

eric (referencing a region rather than a grape) as most will be, it doesn't matter whether it is called Burgundy, Red, Chablis, Rhine, White, Chianti, Rose or whatever.

The name means nothing (except color designation) and there is no way to know the kind of grapes that went into the

bottle. Perhaps that is best. But you do know that what you are buying is a blend of assorted variations (and perhaps vintages), but the blend is one that appeals to the producer. And, short of tasting experience, that is the only guide you have, except price.

In general it would, accordingly, be advisable to stick with a good, dependable producer rather than a totally unfamiliar name. But there are so many familiar names that produce jug wines — CK Mondavi (Krug), Almaden, Sebastiani, Masson, Gallo, Los Hermanos (Bertrug), Mondavi, Pedroncelli, Souvein Pardoce, Inglenook — the list goes on.

Recently a comparative tasting of California jug wines was held by a class dedicated to studying California Reds. The results are reported as a guide to you in your quest for a dependable jug wine.

Sebastiani Mtn. Burgundy, Rank 1, Mean Score 3.55, voted first 4,

voted last 0; Pardoce '74 Burgundy, Rank 2, Mean Score 3.74, voted last 5, voted last 1; Inglenook Naville Burgundy, Rank 3, Mean Score 4.26; voted first 1, voted last 0; Colony Burgundy, Rank 4, Mean Score 4.71, voted first 1, voted last 2; Zanetti Burgundy, Rank 5, Mean Score 5.29, voted first 0, voted last 2; Pedroncelli Sonoma Red, Rank 6, Mean Score 5.82, voted first 1, voted last 1; Zanetti Burgundy, Rank 7, Mean Score 6.18, voted first 4, voted last 2; Mondavi Red table, Rank 8, Mean Score 6.47, voted first 0, voted last 2; Gallo Henry Burgundy, Rank 9, Mean Score 6.88, voted first 1, voted last 4; Masson Baroque Burgundy, Rank 10, Mean Score 8.00, voted first 0, voted last 3.

Jug wines are one of California's unique contributions to the world of wines, offering as they frequently do, excellent value for cost. Perhaps this, tasting report can serve as a guide to your expanding experience in every day wine drinking.

Kimberly Kustron wins American Legion award

Kimberly Kustron, daughter of Mr. and Mrs. Edward Kustron, of 28539 Orchard Lake Rd., Farmington, has been awarded the American Legion Certificate of Distinguished Achievement School Award.

The recognition is made to an outstanding female student possessing high qualities of scholarship, patriotism, leadership, honor, courage and service.

The graduate of Thomas P. Beahan Junior High School was presented the award by Charles E. Larson, chairman of the Groves-Walker Post 346.



KIMBERLY KUSTRON

State College of Beauty

2165 S. TELEGRAPH
BLOOMFIELD HILLS

"I.B.A. Prestige Colleges Where Beauty Begins"

- Enrollments each month
- Financial Aid available
- Beauty Services at fantastic prices

335-9240

GOLDEN ANNIVERSARY?

BRAG ABOUT IT!



CALL YOUR LOCAL EDITOR AT THE OBSERVER & ECCENTRIC

THE PINCHED PLEAT

presents

35% OFF

levolors, verticals
& woven woodblinds

INSTALLATIONS • IN HOME SERVICE
624-5503

CREATIVE TABLES, ETC



- custom made just for you
- laminates, glass, lucite, etc.
- tables, wall units, credenzas, etc.
- delightfully fine workmanship
- delightfully low prices

We Come To You!

Muriel Wetsman
354-4126

Vicky Leeboue
851-0789

ASSOCIATED PODIATRISTS, P.C. FOOT SPECIALISTS-FOOT SURGEONS

25725 COOLIDGE HIGHWAY
OAK PARK, MICHIGAN 48237

The Associated Podiatrists is pleased to announce that Robert S. Ketel, D.P.M., as of June 1, 1979 has joined our professional corporation. Dr. Ketel, a practicing podiatrist for 10 years and a member of the American College of Foot Surgeons, has just recently returned from California to his home state of Michigan.

Mathew Borovoy, D.P.M.
Ronald Reifschneider, D.P.M.
By Appointment Tel: 548-6717

SUMMER CLEARANCE SALE

sandals
FOR THE ENTIRE FAMILY **20-50% savings!**

BASS
DEXTER
BARETRAPS
STRIDE-RITE

SELECT GROUP

SNEAKERS
20-50% OFF
KEOS
STRIDE-RITE
FOR THE ENTIRE FAMILY

FOR THE ENTIRE FAMILY

BASS
DEXTER
STRIDE-RITE
FLEET-RITE
LEATHER SHOES
20-50% OFF
SELECT GROUP

BEL AIRE CENTER
10 Mile at Orchard Lk.
Farmington
477-2343

Greg
SHOES

ORCHARD MALL
Orchard Lk. N. of Maple
W. Bloomfield
851-5566
Sun. 12-5

Colonial House

Since 1937



A Beautiful Store with Beautiful Furniture

MICHIGAN'S LARGEST
PENNSYLVANIA HOUSE DEALER
America's most distinguished traditional furniture

20292 Middlebelt Rd. (South of Eight Mile)
Livonia •

Open Mon., Thurs. & Fri. 9 A.M.

474-6900

COREYS CLEANS HOUSE IN LIVONIA

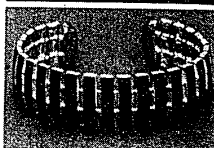
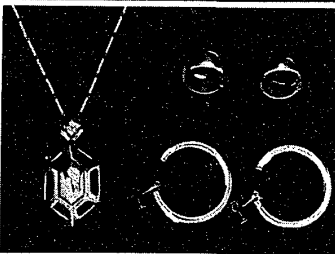
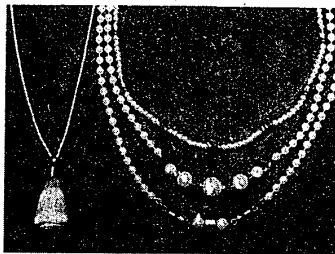


WE'RE REMODELING OUR
LIVONIA MALL STORE AND
OUR MERCHANDISE MUST
GO TO MAKE ROOM!

SAVE 50-75%

A PARTIAL LIST OF OUR INCREDIBLE CLEAN-UP SAVINGS!

- Ankle Bracelets
- Bangle Bracelets
- Cuff Bracelets
- Chain Bracelets
- Rhinestone Bracelets
- Pendants
- Genuine Stone
- Necklaces
- Multi Chains
- Beaded Necklaces
- Pierced Earrings
- Clip Earrings
- Summer White Jewelry
- Sterling Silver Chains
- Pins & Stick Pins
- Fashion Rings
- Rhinestone Pins



Livonia Mall Store Only!
7 Mile & Middlebelt Road
MasterCharge & Visa Welcome

corey's
jewel box

leona SUMMER SALE HANDBAGS

Designer & Fashion Group

WALLETS — BELTS
FASHION JEWELRY

20-50% OFF

Sale Ends
July 2nd

AT ALL 3 LEONA LOCATIONS

Orchard Mall

Orchard Lake at Maple Rd.
W. Bloomfield, 851-4460

Daily 10-6
Thurs & Fri 10-9

Emile Salon
31409 Southfield Rd.
Beverly Hills

LaPavilion
30820 Southfield Rd.
Southfield

Just Marilyn's

MOONLIGHT MADNESS

Friday, June 29

30% - 75% off

Entire Summer Inventory

- Blouses
 - Slacks
 - Skirts
 - Suits
 - Sweaters
 - Dresses
- (Sizes 4 - 18)

Special Sale Hours

Daily 10 - 4:30
Fri. 7 - Midnight

12 Mile & Evergreen
in Country Village Center

356-0493