

AUTOMOTIVE SECTION

Farm Implement

Prices are Falling
Take Advantage Of Them

10 PER CENT CUT ON ALL MACHINERY NOT AFFECTED BY MARCH 1ST CUT. SINCE THE REDUCTION OF THE PRICE OF STEEL. WE ARE NOW GIVING YOU THE ADVANTAGE OF THESE CUTS AND IT WILL MORE THAN PAY YOU TO SEE US BEFORE BUYING ANY PIECE OF MACHINERY.

WE ARE IN A POSITION TO SUPPLY YOU WITH MOLINE AND OTHER MAKES. SPARE PARTS AND REPAIRS ARE OUR SPECIALTY.

H. J. Fisher

GENERAL BLACKSMITHING
FARM IMPLEMENTS.

Plymouth, ————— Michigan.

LIST YOUR

Houses

Farms

Vacant Lots

Rentals and Sales

All Kinds of Property Bought & Sold

George C. Martindale

The Farmington Enterprise

Phone 25 12

DRAWN CARS WITH RIGID TOW-BAR

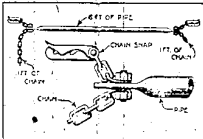
Piece of Rope or Tire Chain Are Not Suitable.

In Case of Sudden Stop Towed Machine Runs Into Rear End of Pilot and Both Vehicles Are Unnecessarily Injured.

Invariably when an automobile has broken down in the streets or on the road, the owner of a small garage will send the first available car, equipped with a piece of rope or tire chain that he may have on hand, to the scene of the breakdown to tow in the disabled car. The driver of the towing car has frequently an exciting time, especially when it is necessary for him to drag the broken-down car through city streets with much traffic. When he is compelled to make a sudden stop the towed car will often run into the rear end of the pilot and both cars are damaged.

All this can be avoided if the owner of the garage is provided with a rigid tow-bar for dragging the disabled vehicle through the streets. A rigid bar is by far the best means, as it keeps the two cars at a fixed distance from each other. Regardless of the position of the brakes of the disabled car, it will come to a stop when the towing car stops.

In the accompanying illustration a tow-bar is shown which can be made from a six-foot section of one-inch wrought-iron pipe, two short pieces of chain, two bolt and two tire-chain snaps. The pipe is flattened at each



Never Attempt to Tow a Disabled Automobile With a Rope. Use a Rigid Bar.

end, and chains and snaps are attached by bolts through drilled holes in the flattened ends. If no iron pipe is available, a considerably heavier wooden bar may be used to the ends of which the chains and harness hooks are attached.—G. A. Luers in Popular Science Monthly.

Ford
THE UNIVERSAL CAR

About Ford Cars — Solid Logic.

THE Ford car has been fundamentally right from the beginning. That fact made it "The Universal Car." It has always led in lowest first cost as well as in lowest cost to maintain and operate.

Runabout, Touring Car, Coupe, Sedan, Truck and Fordson Tractor—we have them all and will make reasonably prompt delivery.

Simplicity has ever marked the designing and building of Ford cars, trucks and tractors. Henry Ford and his engineers have always striven for simplicity with strength. The success of the Model "T" Ford Car and a great part of the Ford Motor Company's success has come from an early understanding and appreciation of that principle in motor car construction. The fewer the parts in a car, the fewer the parts go wrong. When that simple truth is carried out in producing a car, as it is in Ford cars, trucks and tractors, the result is bound to be a simplicity of design and building that means simplicity, durability and economy of operation.

This simplicity of construction proves itself in the ease with which Ford cars, trucks and tractors are driven. Four million five hundred Ford cars in daily service proves every claim we make.

More than ever we are sure the Ford car is your necessity—let's have your order today.

O. RUSSELL

Ford Sales & Service

Farmington, Mich.

Phone No. 113

Fordson
TRADE MARK

Farm Tractor

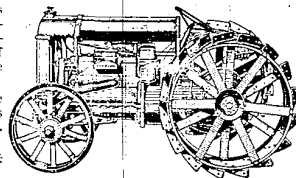
More than 100,000 Fordson tractors have been sold to farmers in the United States. They are helping those farmers do more and better work in less time and at less cost. North, East, South, West—everywhere the Fordson has proven itself a money-maker and a real necessity to the farmer. Besides it solves the labor problem.

These practical farmers have affirmed the economy—the exceptionally low fuel and operating cost—of the Fordson; its time and labor-saving qualities and its ability to increase production. The Fordson was built to be the most economical tractor; it is compact and devoid of excessive weight. And it is built of the same strong Vanadium steel as the Ford car.

Winter or bad weather does not hinder the Fordson's usefulness. Day or night—twenty-four hours a day if you choose—you can utilize the Fordson.

Only so many Fordsons are allotted this territory. Orders are being filled in rotation. Let us have your now.

Made by Henry Ford & Son and sold by



O. RUSSELL

FORD SALES & SERVICE

FARMINGTON, MICH.

PHONE 113



BUICK

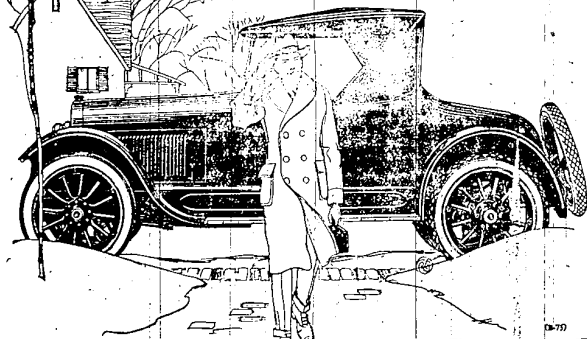


FOR the physician and other professional men whose work calls them into all weather and all sorts of going Buick is an efficient, dependable aid.

They can rely on this car for the sure, rapid transportation which their important affairs demand. The beauty and roominess of the new Buick 1921 models make them, too, pleasing at all times to the family.

Authorized Buick Service insures uninterrupted use of each Buick car.

Effective January 1, regular equipment on all models will include cord tires



Plymouth Buick Sales Company

PLYMOUTH

MICHIGAN

WHEN BETTER AUTOMOBILES ARE BUILT, BUICK WILL BUILD THEM

FOR EVERYBODY'S
BUSINESS
EXCEPT THE
BOOTLEGGERS
AND
PERHAPS THE
BURGLARS
ADVERTISING
PAYS