

# AUTOMOTIVE SECTION

## PRICE REDUCTION ON NASH CARS

We are very pleased to advise that the prices of NASH cars will be reduced, effective July 2. Prices of NASH trucks remain as they are.

The new prices of NASH passenger cars effective July 2, 1921, are as follows:

### SIX CYLINDER CARS.

| Model |                        |         |
|-------|------------------------|---------|
| 681   | — 5 Passenger Touring  | \$1,545 |
| 682   | — 7 Passenger Touring  | \$1,695 |
| 684   | — 7 Passenger Sedan    | \$2,695 |
| 685   | — 4 Passenger Coupe    | \$2,395 |
| 686   | — 2 Passenger Roadster | \$1,525 |
| 687   | — 4 Passenger Sport    | \$1,695 |

### FOUR CYLINDER CARS.

| Model |                       |         |
|-------|-----------------------|---------|
| 41    | — 5 Passenger Touring | \$1,195 |
| 42    | — Roadster            | \$1,175 |
| 43    | — 3 Passenger Coupe   | \$1,735 |
| 44    | — 5 Passenger Sedan   | \$1,935 |

"Our prices during the four years prior to October had risen only 31 PER CENT and the average price increase for all cars was 76 PER CENT."

**Lee Garage**

Phone 62. — — — Farmington, Mich.

## WATER SYSTEMS FOR SUBDIVISIONS.

Our record is our best recommendation.  
Pumping Plants and Water Systems.  
We drill Water Wells.

We have had forty years experience.

**W. F. WARD**  
NORTHWESTERN, STATION.  
47 Wallace Ave. Detroit, Mich.

## ALARM WARNS OF DEFECTIVE TIRE

Electric Device Invented by Indianapolis Man Can Be Attached to Any Wheel.

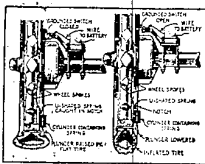
### ELECTRIC SWITCH DOES WORK

Placed in Position So That They Will Be Thrown to One or Other of Two Positions When Tire Is Punctured.

It frequently happens that air leaks slowly from a tire without the driver's knowing it. The tire becomes flat and the rim of the wheel cuts into it. To warn drivers in time, George F. Young of Indianapolis has recently invented an electric alarm which can be attached to any wheel. It consists of an electric switch which is mounted on the axle of a wheel. The blade of this switch projects toward the spokes of the wheel. The end of the blade stops very close to the spokes, though enough space is left to enable the blade to barely clear them.

#### Working of Switch.

Working in conjunction with the blade of the switch is a metal finger mounted on one of the spokes of the wheel. This finger can slide radially to the wheel, but a spring normally holds it away from the axle, with one



A flattened tire presses a switch-finger inward. The electric switch is thus closed, and an alarm in the circuit at once gives warning.

end up against the underside of the inflated tire. The other end of the finger will clear the projecting blade when the tire is properly inflated. Just as soon as the tire begins to flatten, the finger is pressed radially inward and it strikes against the projecting blade. The switch is thereby closed and an alarm, such as a well located light or buzzer which is very easily heard, is operated.

**Rotate with Wheels.**  
The various switches are mounted so that they do not rotate with the wheels with which they are associated; but they are placed in a position so that they will be thrown to one of the two of their closed positions when the tire is punctured or if the air suddenly leaves it. This method of mounting may be carried out in several different forms. The one most convenient is shown in the accompanying illustration.—Popular Science Monthly.

### Does the Valve Leak?

It is an easy matter to discover whether the tire valve leaks or not if you know the little kink. Remove the cap and, having the wheel turned so the valve is right at the top, set up over the valve stem a bottle, a glass container of any sort, filled with water. If there is a leak, of course, the bubbles will indicate it. Try it with the cap on and with the cap off. You may find that a valve you thought all right is the sole cause of a tire constantly getting soft without apparent cause. The tube that shows no leak when taken out and immersed in water, valve and all, may leak through the valve slowly when in the shoe and pumped up to riding pressure. So this little kink is well worth remembering.

### Marked Era in Journalism.

The Edinburgh Review, established in 1802, was the first high-class critical journal to find a permanent footing and achieve success. Its founders were Jeffrey, Scott, Horner, Broughman and Sydney Smith and under them it developed a new era in periodical criticism, having a wider range and more elevated tone than any of its predecessors.

## Fordson Farm Tractor

Has demonstrated its money-making qualities for more than ninety thousand farmers in the United States, because it gives better plowing, better cultivation and better harvesting, and therefore, better crops.

The Fordson Tractor is so simple in design and operation that boys and girls drive it.

It is made of materials of highest quality.

It is most economical in operation.

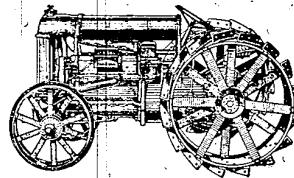
It has run 30 days and nights continuously without stopping.

It is the necessity on every farm.

We not only sell Fordson Tractors, but also carry a stock of parts and employ Fordson mechanics to help you get the best results from Fordson.

Order your Fordson Tractors now. The demand is greater than the supply and orders are being filled in rotation.

Made by Henry Ford & Son and sold by



**O. RUSSELL**  
**FORD SALES & SERVICE**  
FARMINGTON, MICH. PHONE 113.

# BUICK

**THE** importance of a business man's affairs demands that his car be absolutely trustworthy. That is why Buick is a favorite among business men.

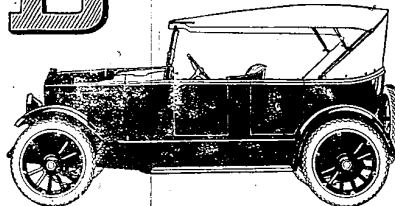
The new Buick Nineteen Twenty One models, powerful and comfortable, are as beautiful as they are efficient.

There is Authorized Buick Service, too, wherever you go.

*Effective January 1, regular equipment on all models will include cord tires.*

## DORT

Quality Goes Clear Through



The Dort name and fame have been built solidly upon the marked ability of the car to deliver a high-grade of sustained performance at a very low cost per mile.

Now to that fame must be added the quality of exceptional beauty both in body design and in the details of construction.

### PRICES

|                  |   |        |
|------------------|---|--------|
| Touring Car      | — | \$ 985 |
| Roadster         | — | \$ 985 |
| Fourseason Sedan | — | \$1685 |
| Fourseason Coupe | — | \$1535 |

F. O. B. Factory.

Wire Wheels and Spare Tires Extra.

**PARK GARAGE**  
FARMINGTON — — — MICH.

## CENAQUA SHORES

### BEAUTIFUL WALLED LAKE SUBDIVISION

An ideal spot for you to buy a lot. Lake Property in a few years will be taken up. Come and see me and pick out a choice lot.

Buy one of our Cottages. Let us design and build for you or reserve a lot and build your own.

Walled Lake is over 100-feet above the Detroit River.

### HERMAN CZENKUSCH

WALLED LAKE — — — Phone 314-J-Northville. — — — MICH.

**Plymouth Buick Sales Company**  
PLYMOUTH MICHIGAN  
WHEN BETTER AUTOMOBILES ARE BUILT, BUICK WILL BUILD THEM