



No. 151 F.A.M.  
Regular meetings  
on Saturday nights  
on or before the full  
of the moon.

The Farmington Enterprise Co.  
Wales C. Martindale—President  
\$150 per year, in advance.

Published Friday of each week  
and entered at the Post Office  
at Farmington, Oakland Coun-  
ty, Mich., as second class mail  
matter.

#### MCGEE HILL.

Those residents who are obliged  
to traverse McGee Hill are help-  
ing the United States Rubber  
Corporation to a great extent. The  
heavy summer rains plus the  
trucks and other vehicles have  
made the road on both sides of  
this steep hill a veritable tire  
killer. The side of the hill far-  
thest from the village is filled  
with ruts and large, coarse stones,  
and when two vehicles meet on  
this side of the hill it creates a  
situation full of danger. None  
of the Councilmen evidently tra-  
verse this road. The citizens who  
use McGee Hill road know that  
these gentlemen have not pur-  
posely neglected this road. There  
is no doubt but that they are un-  
aware of its present condition.  
Especially since a fleet of heavy  
trucks have hauled gravel on a  
night and day shift over this road.

Isn't She the Cutest?  
Woman Writer—A festive touch  
may be imparted to rice croquette  
by hiding a big raisin in the heart of  
each.—Boston Transcript.

#### NOTICE

Notice of Review of Special As-  
sessment for the Improvement  
of Assessment District Road No.  
392, under Act 59, Public Acts  
of 1915, as amended.

To all persons interested in said  
assessment in the townships of  
Novi and Farmington, in Oakland  
County, Northville and Livonia,  
Wayne County, to the said town-  
ships of Novi and Farmington, in  
Oakland County, Northville and  
Livonia, in Wayne County, and to  
the said Counties of Oakland and  
Wayne.

Whereas, I, as State Highway  
Commissioner of Michigan, have  
heretofore determined that the  
highway commencing at the north  
section corner common to sections  
26 and 27, town 1 north, range 8  
east, Novi Township, Oakland  
County; thence south on the sec-  
tion line between sections 26—27  
and fractional sections 34—35 to  
the south section corner common  
to said fractional sections 34 and  
35; thence east on the county line  
between fractional sections 35 and  
36, town 1 north, range 8 east,  
Novi Township, Oakland County  
and fractional sections 2 and 1,  
town 1 south, range 8 east, North-  
ville Township, Wayne County to  
the east section corner common to  
said fractional sections 36 and 1;  
thence continuing east on the  
county line between fractional  
sections 31, 32 and 33, town 1  
north, range 9 east, Farmington  
Township, Oakland County and  
fractional sections 6, 5 and 4, town  
1 south, range 9 east, Livonia  
Township, Wayne County to the  
south section corner common to  
fractional sections 33 and 34 of  
said Farmington township; thence  
north on the section line between  
fractional sections 33—34 and sec-  
tions 27—28 to its intersection  
with the Grand River Road in the  
Village of Farmington, shall be  
improved in accordance with the  
specifications now on file; and  
Whereas, I, as such commission-  
er did heretofore determine the  
boundaries of the special assess-  
ment district No. 392 for said high-  
way known as Assessment District  
Road No. 392 to be as follows:  
Said district includes all lands  
within the following boundaries in  
the townships of Novi and Farm-  
ington, in Oakland County, North-  
ville and Livonia, in Wayne County  
to-wit:

Commencing at the south ½ post  
common to sections 22 and 23, town  
1 north, range 8 east, Novi Town-  
ship, Oakland County; thence west  
¾ mile on the south east-and-west  
½ line of said section 22 to the in-  
tersection with the south north-and-  
south ½ line of said section 22;  
thence south 2½ miles on the west  
north-and-south ½ line of sections  
22, 27 and fractional section 34 to  
the west ¼ post on the south side  
of said fractional section 34;  
thence west about ¼ mile on the  
south side of said fractional sec-  
tion 34 to the north corner common

to fractional sections 3 and 4,  
town 1 south, range 8 east, North-  
ville Township, Wayne County;  
thence south ¾ mile on the section  
line between fractional sections  
3—4 to the ¼ post common to  
said fractional sections 3 and 4;  
thence west ¼ mile on the east  
and west ¼ line of said fractional  
section 4 to its intersection with  
the east north-and-south ½ line of  
said fractional section 4; thence  
south ½ mile on the east north-  
and-south ½ line of said fractional  
section 4 to the east ½ post on the  
south side of said fractional sec-  
tion 4; thence east ¼ mile on the  
section line between fractional  
section 4 and section 9 and frac-  
tional section 3 and section 18 to  
the east section corner common to  
said fractional section 3 and sec-  
tion 10; thence north ½ mile on  
the section line between fractional  
sections 2—3 to the ¼ post com-  
mon to said fractional sections 2  
and 3; thence east 2 miles on the  
east and west ¼ line of fractional  
sections 2 and 1 to the ¼ post on  
the west side of said fractional  
section 1; thence south on the  
east side of said fractional section  
1 to the ¼ post on the west side  
of fractional section 6, town 1  
south, range 9 east, Livonia Town-  
ship, Wayne County; thence east  
¾ miles on the east and west ¼  
line of fractional sections 6, 5, 4  
and 3 to the center of said frac-  
tional section 3; thence north ½  
mile on the north and south ¼  
line of said fractional section 3 to  
the ¼ post on the north side of  
said fractional section 3; thence  
east on the north side of said frac-  
tional section 3 to the ¼ post on  
the south side of fractional sec-  
tion 34, town 1 north, range 9  
east, Farmington Township, Oak-  
land County; thence north 2 miles  
on the north and south ¼ line of  
fractional section 34 and section  
27 to the ¼ post on the north side  
of said section 27; thence west 1  
mile on the north side of sections  
27 and 28 to the ¼ post on the  
north side of said section 28;  
thence south ½ miles on the  
north and south ¼ line of section  
28 and fractional section 33 to the  
center of said fractional section  
33; thence west 2 miles on the  
east and west ¼ line of fractional  
sections 33, 32 and 31 to the  
center of said fractional section  
31; thence north ¾ mile on the  
north and south ¼ line of frac-  
tional section 31 and section 25;  
thence south ½ miles on the  
east-and-west ½ line of said sec-  
tion 30; thence west ½ mile on  
the south east-and-west ½ line of  
said section 30 to the south ½  
post on the west side of said sec-  
tion 30; thence north on the west  
side of said section 30 to the south  
½ post on the east side of section  
25, town 1 north, range 8 east,  
Novi Township, Oakland County;  
thence west 1½ miles on the south  
east-and-west ½ line of sections  
25 and 26 to its intersection with  
the north and south ¼ line of  
sections 26 and 23 to its inter-  
section with the south east-and-  
west ½ line of said section 22;  
thence west ½ mile on the north  
east-and-west ½ line of said sec-  
tion 23 to the place of beginning.

And all lands in the townships  
of Novi and Farmington, in Oak-  
land County, Northville and Li-  
vonia, in Wayne County, within the  
boundaries above described, will  
pay assessments up to the improve-  
ment of said highway, and also the town-  
ships of Novi and Farmington, in  
Oakland County, Northville and  
Livonia, in Wayne County, and the  
Counties of Oakland and  
Wayne at large.

Now, therefore, all owners of  
lands within the above described  
boundaries in the townships of  
Novi and Farmington, in Oakland  
County, Northville and Livonia, in  
Wayne County, and all persons in-  
terested in said lands in the  
townships of Novi and Farming-  
ton, in Oakland County and North-  
ville and Livonia, in Wayne Coun-  
ty, the Counties of Oakland and  
Wayne, are hereby notified that on  
the 15th day of August, A. D. 1921  
at 11:00 o'clock A. M., I will be  
present at the Village Hall in the  
Village of Northville, within the  
assessment district, and announce  
my assessment of benefits upon  
the lands within said boundaries  
constituting said special assess-  
ment district, and upon the town-  
ships of Novi and Farmington,  
in Oakland County, Northville and  
Livonia, in Wayne County, and upon  
the Counties of Oakland and  
Wayne, at large, and the said as-  
sessment of benefits will be open  
to review. All persons, said town-  
ships or counties may appear and  
be heard with respect to their  
several objections of benefits  
for said highway.

Given under my hand at Lan-  
sing, Michigan, this 6th day of  
July, A. D. 1921.  
FRANK F. ROGERS,  
State Highway Commissioner.

#### OWN GAS KILLS HIM

Chemist Commits Suicide Under  
Dramatic Circumstances.

Pays All Debts and From Remaining  
Stock of Chemicals Mixes Com-  
pound to Generate Gas.

London.—Consuming his own lethal  
gas, Constantin De Mereschevsky, a  
chemist and botanist of international  
repute, former professor in the Uni-  
versity of Petrograd, committed sui-  
cide in a Geneva hotel under dramatic  
circumstances.

Meresevsky escaped from Russia  
with a small fortune, which was ex-  
hausted after two years' residence in  
Geneva, where he continued his re-  
search work and wrote a number of  
scientific books. When his funds were  
gone he was too proud to appeal for  
help, though in view of his high stand-  
ing he could have obtained a hand-  
some subsidy to pursue his studies  
from scientific associations in Amer-  
ica, France and England had he  
stooped to solicit aid.

He preferred to die. He scrupulously  
paid all his debts and then, from his  
remaining stock of chemicals mixed a  
special composition which he poured  
into a receptacle, to which he attached  
a tube.

At the other end of the tube was a  
mask which he placed over his face,  
and then, blind himself to the red  
released the gas which was given off  
from the composition. He died from  
asphyxiation. Friends had to wear  
gas helmets to remove the body  
from the room.

#### 26,869 ALIENS IN SHANGHAI

Entire Population Estimated at More  
Than 2,000,000—No Census of  
City Taken.

Shanghai.—A quinquennial census  
taken in October in the French con-  
cession and the international settle-  
ment gives Shanghai a foreign popu-  
lation of 26,869, according to official  
returns.

A census of the entire city, native  
and foreign, has never been taken, but  
careful estimates place the population  
at more than 2,000,000.

The international settlement has a  
foreign population of 23,807 and the  
French concession 3,062. In the two  
concessions the Japanese lead in point  
of numbers with 10,521. British are  
second with 6,885. Americans third,  
2,813. and Russians fourth, 1,882.  
There are 848 Frenchmen in the two  
districts.

The international settlement has 85  
known different nationalities, with 18  
of undefined nationality. The Ger-  
man population, which in 1916 totaled  
1,168, has dwindled to 289.

#### CONQUER YANGTZE RAPIDS

Hydroplane to Be Used to Effect Navi-  
gation Beyond Gorges in Chi-  
nese Stream.

Shanghai.—By means of the hydro-  
plane, which the British used success-  
fully in Mesopotamia during the war,  
another effort, and one wholly novel  
to China, is to be made to conquer  
the rapids of the Yangtze gorges.

At places there the current attains  
a velocity of more than thirty miles  
an hour.

The ordinary head of navigation for  
steamers on the Yangtze is at Ichang,  
1,000 miles from the coast, in  
Szechuen, China's most populous pro-  
vince, and one of its richest. Its nearly  
four hundred miles further up the  
river, beyond the wild bandit-ridden  
country of the gorges.

The use of the hydroplanes on the  
upper Yangtze is the enterprise of a  
French company with headquarters in  
Shanghai. A number of these craft  
will sail up the Yangtze from  
Shanghai in December for trial runs.

MILUKOFF GIVES UP LIBRARY

Former U. of C. Professor Presents  
His Russian Collection to Stan-  
ford University.

Stanford University, Cal.—Prof.  
Paul Milukoff, Russian secretary of  
foreign affairs after the revolution of  
1917, and formerly a professor at the  
University of Chicago, has presented  
to Stanford university his private li-  
brary on Russian history, said to be  
one of the most complete collections  
in existence. It was announced.

The bulk of the library was collect-  
ed while the donor was professor of  
Russian history at the University of  
Moscow. It had been in storage for  
six years in Heidelberg, Prussia,  
where it was shipped December 2 to  
this country.

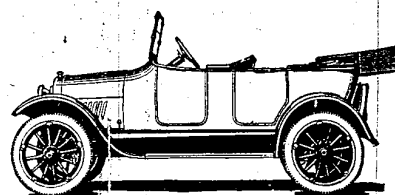
WOMEN TALLER AND HEAVIER

Increase in Stature and Weight At-  
tributed to Outdoor Life by  
Athletic Director.

Philadelphia.—Women are growing  
taller and heavier, according to Dr. R.  
T. McPherson, director of physical  
education at the University of Penn-  
sylvania.

"Statistics of women's colleges cov-  
ering a period of 60 years show the  
average college girl of today is an  
inch taller than the college girl of  
1860, he said. "These statistics also  
prove the modern girl is six or seven  
pounds heavier."

# AUTOMOTIVE SECTION



CHEVROLET

Model '490'  
Touring  
Car

\$625.00

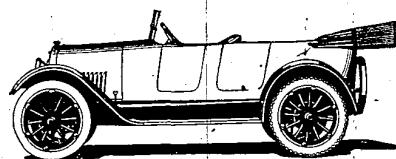
The greatest automobile value in the world.

The lowest priced completely equipped quality car on the market.



Model  
"F. B. 50"  
Touring Car

\$975.00



A big 4-cylinder car complete in equipment, refined in appearance,  
beautiful in design and famous for its motor.

All Prices are F. O. B. Flint, Michigan.

Wm. GOERS, Agent.

Corner Grand River Avenue and Orchard Lake Drive.  
LAKE DRIVE GARAGE  
PHONE 31-F-3. — — — FARMINGTON, MICH.

#### AUTO TOPS

RECOVERED & REBUILT

Curtains, Cushions and Trim-  
ming of All Kinds.  
Upholstering a Specialty.  
All our Work is Guaranteed.  
Reasonable Rates.

ROSE & PARK.  
Clarenceville, Michigan.



THE WAY WE DO IT

impresses most people with  
the idea that we have the  
implements and the "know  
how" when it comes to re-  
pairing automobiles. Hurry  
orders are what we like, and  
we keep the parts to repair  
your car in record time.

E. G. ALLEN

FARMINGTON, — — — MICH.  
Located at Cook's Blacksmith Shop

Meaning of Dream of Eagle.

To see one foretells success in love  
and a fortune in commerce. To see  
one fly through the air as a furious  
pace denotes success in fire, present  
undertaking. To dream that you ride  
upon an eagle's back, you are in  
danger. If an eagle light upon your  
head it foretells death to a relative or  
friend. To see a dead eagle  
signifies the death of some prominent  
person and the success of a poor man.  
To kill one denotes happiness of short  
duration. To see one carry off prey  
foretells loss by theft.

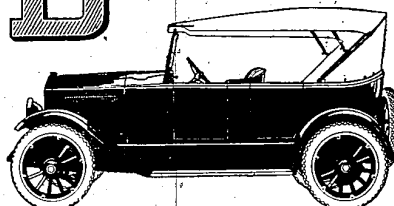
New Kind of Driver.

From a Story—"She glanced cau-  
tiously out of the window at her  
future, who stood beside her car."—Bos-  
ton Transcript.

First President to Wear a Beard.  
Lincoln was the first president to  
wear a beard and Grant was the first  
one to wear a mustache.

# DORT

Quality Goes Clear Through



Few other cars have ever incited the genuine enthusiasm  
and appreciation that has been bestowed upon the Dort  
family of cars now being introduced.

The wonderfully beautiful bodies are mounted upon  
the famous Dort chassis whose record for long and loyal ser-  
vice with exceptional economy is noteworthy among  
motor cars.

Touring Car	—	—	\$ 985
Roadster	—	—	\$ 985
Fourseason Sedan	—	—	\$1685
Fourseason Coupe	—	—	\$1535

F. O. B. Factory.  
Wire Wheels and Spare Tires Extra.

**PARK GARAGE**  
FARMINGTON — — — MICH.



# MACK

STANDARDIZED  
Storage Battery

W. C. McNABB

419 East Jefferson Avenue — — — Detroit, Mich.