

# AUTOMOTIVE SECTION

Our Best "Ad"  
is  
The Work We Do!

## PARK GARAGE

KAHRL &amp; TAMM

TELEPHONE 111.

FARMINGTON, MICH.

## BEST TIRES AT BEST PRICES

U. S. TIRES—PLAIN—USCO—KNOBBY—CORD

GOODYEAR

GOODRICH

BUY YOUR TIRES NOW

FORD SALES &amp; SERVICE

**You're  
Invited  
to  
Share  
the  
Benefit  
of  
Willard  
Service**

To be perfectly frank about it, we're mighty sorry everybody doesn't use Willard Threaded Rubber Batteries. Maybe yours is one! Maybe not! But even if you haven't, never did have, and never expect to have a Willard Battery on that car you can consider yourself invited into Battery Headquarters to have your battery looked over. What do we get out of it? We get a chance to show you what real battery service is like. The odds are good that you'll think of us when you need repairs or a new battery.

**The Auto Shop**

MARK B. OWEN

PHONE 84

Representing  
Willard Storage Batteries

## IMPORTANT CARE OF LUBRICATION

One Part of Car That Must Be Right and Needs Special Care in Cold Weather.

## KEROSENE IS GOOD CLEANSER

When Freezing Weather Arrives Test Oil to See If It Is Adapted to New Conditions—Do Not Permit Water to Accumulate.

Do not neglect to overhaul your lubricating system until winter is far advanced. It is a job which the ordinary man avoids because it gets his hands dirty. But serious trouble may follow if the work is not done in time writes Albert N. Atkinson in the New York World. Winter, with its low temperature, brings unusual conditions, and the various lubricants used on a car must be adapted to the change.

Doubtless the oil in the crank case has been changed every 1,000 to 1,500 miles during the summer, a rule which should be followed all winter. But frequently the motorist neglects to clean out the crank case when changing oils and so the dirt and grit remain in the bottom of the sump to contaminate the new oil.

### Use Kerosene Method.

Properly the oil base should be removed and the strainer, pump and pipes thoroughly cleaned. A new gasket must then be fitted around the joints. This is more of a job than the average man wishes to undertake, so the kerosene method may be considered fairly satisfactory.

Before putting in the new oil let us consider whether it is adapted to the new season or not. The working temperature will be the same, but the oil sump is exposed to every blast of cold air coming through the radiator and the oil may be chilled to a point where it cannot flow. As soon as freezing weather arrives make a cold test of the oil as follows: place half a tumbler of the oil in some exposed place where it may be acted on by the outside temperature. Watch it from day to day. If it thickens up and refuses to run at any time it is not suited to your engine. Use a slightly thinner oil or one which will not be too sluggish at the low temperatures usually met at your latitude. If inconvenient or impossible to change the oil immediately, keep the car in a warm place and do not take it out until the engine has run ten minutes or so and warmed up the oil. The hot oil flowing back into the sump soon brings it to a temperature where the cold will have no bad effect upon it. If obliged to let the car stand any length of time with engine not running, you will of course blank the radiator which not only protects the cooling system but the oil as well.

### Ashanti Rich With Mahogany.

It is estimated that the gold coast and Ashanti could supply over 20,000 logs of mahogany and cedar a year if the internal communications were better.

## Chevrolet Sales On Increase

People are buying cars today. They are taking advantage of the present low prices for improved models. They know that they can enjoy their comfort and convenience all during the severe weather and that in the Spring when the demand increases they will not only have their cars but will have profited through the economy of their present investment.

On October 5th, last, Chevrolet dealers in and around Philadelphia, confident of the business in store for them, received on their order the largest shipment of Chevrolet cars on record for that part of the country. A solid trainload shipped from the great eastern plant of the Chevrolet Motor Company at Tarrytown, N. Y., was paraded up Broad Street, Philadelphia, and afterward taken by the respective dealers for delivery to new Chevrolet owners who believe in buying the right car at the right price at the right time.

Odd Idea Concerning Tobacco. When tobacco first came into use in Europe it was generally regarded as a cure for diseases and a protection against catching the plague, etc.

## Prest-O-Lite Prices Downward Prest-O-Lite Quality Upward

All Types of Batteries Reduced to Bed Rock Figures

New Prices \$19.90 and up

Prest-O-Lite's 1922 prices give the greatest battery values in years. Drive around today—see for yourself. The regular standard, top-quality Prest-O-Lite Batteries which 87 car manufacturers use as original equipment.

6-Volt Type for popular makes of light cars			
Yesterday's Price	Price One Year Ago	Price One Year Ago	Price One Year Ago
32% Less than Yesterday	\$29.60	\$36.00	45% Less than Yesterday
NEW TRADE-IN PRICE \$19.90			

12-Volt Type for Maxwell, Dodge and Franklin			
Yesterday's Price	Price One Year Ago	Price One Year Ago	Price One Year Ago
\$32.30	\$41.30	\$53.10	

6-Volt Type for Buick, Chandler, Chalmers, Hudson, Maxwell, Oakland, Essex, etc.			
from \$24.65 up			

Prest-O-Lite mean longer life Batteries. The plates are the backbone of the battery. You never need a new battery as long as the plates are right and Prest-O-Lite's are right. Therein lies the secret of Prest-O-Lite's longer life, greater pep and power.

LAKE DRIVE GARAGE

Farmington, Phone 31F-3 Mich.

Service, repairs and recharging on all makes

**Ford**  
THE UNIVERSAL CAR

## New Prices

Effective January 16, 1922

Chassis	-	\$285
Runabout	-	\$319
Touring Car	-	\$348
Truck	-	\$430
Coupe	-	\$580
Sedan	-	\$645

J. O. B. DETROIT  
(War Tax Extra.)

These are the lowest prices of Ford cars in the history of the Ford Motor Company.

Orders are coming in fast, so place yours promptly to insure early delivery.

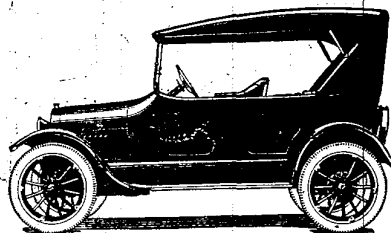
## Ford Sales & Service

OLIN RUSSELL, Prop.

Farmington,

Phone 151.

Michigan.



## Chevrolet Features

LIGHT WEIGHT—CORRECT BALANCE.

VALVE-IN-HEAD MOTOR.  
Powerful—Economical—Dependable.

LOW GASOLINE CONSUMPTION.

UNUSUAL HILL CLIMBING ABILITY.

HIGH TIRE MILEAGE.

MOST ECONOMICAL TIRE SIZES.

EAGER ACCELERATION.

Over Wide Speed Range.

EASE OF CONTROL AND OPERATION.

MECHANICAL ACCESSIBILITY.

Selective Type Transmission—Three Speeds  
Forward, One Reverse, and Emergency Brake,  
all Hand Controlled—Foot-Throttle.

COMPLETE EQUIPMENT.

Including Electric Starter and Lights, Speedometer, Demountable Rims, Etc.

LOW PRICE.

## Lake Drive Garage

William Goers Prop.

FARMINGTON

MICH.