



No. 151 F. & A. M.
Regular meetings
on Saturday nights
on or before the full
of the moon.

Local News

William Millard and family spent Sunday with their daughter and family, Mr. and Mrs. Chester McLaughlin, at Ferndale.

Mrs. Russell Tuttle and two children of Detroit, spent Saturday with their parents, Mr. and Mrs. William Millard.

Mr. and Mrs. John Sanford of Detroit, were callers at the home of Mr. and Mrs. P. A. Glidden, on Saturday.

Mrs. F. L. Whipple, wife of the manager of the Enterprise, was in Farmington Sunday. They are to move here about the first of May.

Hinman Nichols, Russell Catheman, Lester Harger and Avery Reading are home from college for their spring vacation. Avery Reading is on the sick list.

Mrs. P. A. Glidden entertained a party of six ladies from Detroit at her home Friday afternoon. All remained to attend the Eastern Star meeting in the evening.

Mr. and Mrs. Lyman Sprague were out from the city last Wednesday to attend the funeral of Mrs. Kennedy and spent the night with their parents, Mr. and Mrs. E. S. Sprague.

Clarence Webber and daughter Mary Elizabeth, of Flint, came Saturday night to visit at the home of Judd Webster and family. Mr. Webber returned home Sunday. Mary Elizabeth will remain for a week with her grandparents.

In a roundabout way The Enterprise has learned of quite a lot of building and improvements which will materialize in Farmington the coming season which means the expenditure of several thousands of dollars. Just as soon as we are able we will publish the particulars.

A surprise was given Mr. and Mrs. William Hendryx by the Fairview Sewing circle Monday evening. The evening was spent in music and fun, after which refreshments were served. Mr. and Mrs. Hendryx moved into the Stevenson house on Wilmarth avenue, Tuesday.

Mrs. Jim Hayes and children will spend the week-end with his brother and family in Detroit.

Mrs. Ivan Webber and three children of Pontiac, spent the day Wednesday with Mrs. Leon Green and family.

Not how big, but how strong

The strength of a bank cannot be measured by its size. You must look behind the building, deeper than the amount of deposits, and farther than the number of depositors to find its real strength. A truly strong bank, like the Farmington State Savings Bank, is governed by an ideal of just and democratic treatment of its customers. In it personality stands out big. Its strength lies in just that invisible tie which binds it to its depositors.

**Farmington
State Savings Bank**
Farmington Mich.

FOR MORE MILES AND POWER

use

RED CROWN GASOLINE

yours truly,
PARK GARAGE
Kahl & Tamm

NORTHWEST FARMINGTON
Mr. and Mrs. Irven Knapp and Edward Knapp spent Friday in Detroit.

Mrs. Pratt of Walled Lake, spent Friday afternoon with Mrs. Calvin Green.

Lucile Campbell has been out of school for the past two weeks with a bad cold.

Those who attend the Pontiac school are enjoying their spring vacation this week.

Mr. and Mrs. E. See and children of Detroit, were Sunday guests at the home of Mr. and Mrs. Calvin Green.

Mr. and Mrs. Starr Graham and family spent Sunday at Walled Lake as the guests of Murley Bachelor and family.

The Willing Workers will meet with Mrs. Charley Halsted Thursday April 5, for dinner. It is the first meeting this year. Everyone come and get a good dinner.

IMPORTANT FUNCTION OF CAR TIRE TREADS

Not Decorations Like Embroidery
on Woman's Dress.

Tractive Wave is Partly Overcome and Car Held to the Road Without Slipping and Side-Sway on Moist Surfaces.

Some car owners think tire treads are decorations like embroidery on women's dresses, or distinctive patterns by which the manufacturer can leave advertisements on soft roads. But if such trifling considerations were suggested to the scientists who create the modern tire, they would be scandalized.

As a tire revolves there forms a bulge just ahead of where it is in contact with the road. This bulge is called a "tractive wave." Although the bulge always stays in the same relation to the road, the revolving of the wheel has the apparent effect of making it travel around the tire.

In plain tread tires the full force of this wave continues to roll around the tire. But with a tread with a ribbed or cogged backbone in use the wave is divided to a certain extent and thrown off at the sides. Some tire treads are smooth, some corrugated and some indented, but the purpose of them all is to overcome this wave. The decorative effect is only incidental.

Another important function of the tire tread is to resist slipping and side-sway. If a tire is to give full satisfaction it must be designed to hold the car to the road. An excellent tread combines holes to provide a vacuum grip on slippery surface with a V-shape or angle design to prevent side-sway.

GIVE AUTO TIRE GOOD ATTENTION

Very Few Owners Give a Thought
to Its Care, With Exception
of Inflating It.

COTTON FABRIC FOUNDATION

Elimination of Internal Friction Would
Greatly Increase Life of Cover—
Big Difference Between Cords
and Fabric.

To the average owner, an automobile tire is good only when it travels many thousands of miles without breaking down or blowing out. Very few give a thought to its care, with the exception of inflating it from time to time, and a still smaller number know what it is made of.

A big tire concern has prepared a treatise on the foundation of one which should be remembered by every motorist. It is as follows: "Cotton fabric is the foundation upon which an automobile tire is built. It is used to give stability and strength. There are two well-known classes of tires—the square-woven fabric and the cord tire.

Cords and Fabrics Differ. "In the square-woven fabric tire the threads in each ply run in both directions, alternating over and under as in a piece of ordinary cloth. In the cord tire, the threads or cords, in each ply run parallel, with the exception of a few small cross threads, used simply to hold the cords together while they are being impregnated with the rubber compound.

"The life of a tire would be greatly increased if internal friction could be eliminated. The internal friction caused by intermittent distortion of the tire in use is the result of the friction of the threads upon each other and the strains and stresses set up in the rubber compounds. Naturally the fabric which gives the least room for internal friction will give the longest life to the tire.

"Since square-woven fabric cannot be thoroughly impregnated with rubber at the points where the threads cross, flexing at these points will cause a sawing action and the generating of internal heat. It has been demonstrated very clearly by experiment that when the temperature resulting from internal heat reaches 230 degrees, vulcanized rubber ceases to function as an adhesive compound, crumbles into fine particles which fail to resume their original condition, causing the compound to lose its function in the tire.

Heat Spoils Rubber. "This causes separation, weakness, and finally a blowout. It may be interesting to know that 230 degrees is not an uncommon temperature reached in a tire when driven at a high speed over the road; this is particularly true of large truck tires.

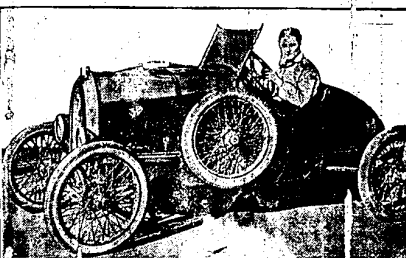
In the case of cord tires, each thread is imbedded in the rubber compound and the internal friction is reduced to a minimum. A brief summary of the advantages derived from the use of cord tires would include easier riding, due to greater resiliency; saving of gasoline and oil; saving of machinery, and more miles per dollar.

HANDY CLEANING RECEPTACLE

Convenient Way Outlined for Removing
Dirt and Grease From Small
Machine Parts.

A convenient receptacle to have around the garage for cleaning bolts, nuts and other small parts is made by removing the bottom from a one-pound coffee tin and soldering in its place a coarse wire screen. The parts to be cleaned are then placed in the tin, the cover put on and the receptacle is shaken in a larger pail containing kerosene or gasoline. Dirt and grease are separated from the parts by the oil and allowed to fall through the mesh—Motor.

LITTLE BUG CAN DO 85 AN HOUR



This small car, perhaps the smallest ever built, is a new model especially constructed to hold the record in a new motion picture by Walter Reed, in which a transcontinental race is to be staged.

The machine is of the special built and is about the size of a stripped-down Ford. It is equipped with all the latest of the big racing cars, however. Including the ignition, special radiator, suspension and two-speed axle. The car is geared three to one and is said to be capable of a speed of 85 miles an hour.

Eddie Heffernan, expert mechanic and hot racing driver, who was forced to retire from the racing game because of injuries, spent several weeks getting the car in shape.

What Day is Tomorrow?

When you stop and think you know it is April 1—The day when every woman thinks of house cleaning and putting everything in tip-top shape for summer. If it is a new oil stove we have two of the very best makes manufactured.

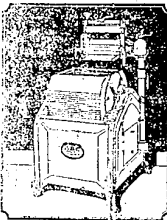
The NEW PERFECTION

Thousands in use—Good and Reliable

The FLORENCE AUTOMATIC

Wickless, Oderless, Intense Heat

Ask for demonstration.

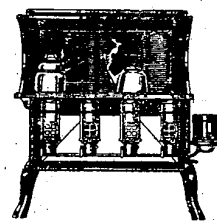


A - B - C - OSCILLATING WASHING MACHINE

The newest, best and most
economical washer and only—

\$99.00

You are losing money if you
are without one.



SEEDS

CLOVER
ALISKE
ALFALFA
TIMOTHY
LAWN SEED
All Kinds of
GARDEN SEED

D. L. DICKERSON FARMINGTON HARDWARE CO. E. O. HATTEN

KEEPING SPARK PLUGS CLEAN

Grease and Mineral Film Accumulate
on Exterior and Interior of
the Porcelain.

Many car owners do not realize the importance of keeping spark plugs clean. The points of the plug seldom need cleaning, but grease and mineral dirt do accumulate on the exterior and interior of the porcelain, so that the current passes clear way instead of jumping the gap as it should. The plugs should be kept clean, or ignition troubles will result.

ACCELERATOR IS SENSITIVE

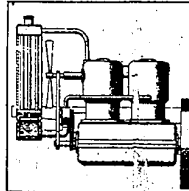
Novice in Driving Over Rough Roads
Will Find 6 Mile Foot Rest
Is Advantageous.

The accelerator on some cars is very sensitive and the novice finds difficulty in proper control of the foot-throttle driving over rough roads. A simple foot rest installed to fit the ball of the foot will prove advantageous.

RADIATOR MADE NONFREEZING

Common Winter Ailment Can Be
Eliminated by Keeping Constant
Flow of Water.

Freezing up of radiators on automobiles is a common ailment in the winter. Have your car fixed up with one of these devices in the summer and next winter you'll be gambling along while your neighbor is using up lots of time and labor trying to thaw out his car so he can go to town. The non-freezing part is obtained by having



A water jacket connected to the upper part of the radiator, a reservoir which communicates with the jacket and lower part of the radiator, and pipes which keep a constant flow of water running between them. The water is drained from the radiator by gravity when the engine is not running.

QUICK SERVICE—NO WAITING.

Steffen's Sanitary

—CASH—

Meat Markets

"Have a Treat—Buy Steffen's Meats,
They Can't be Beat Around This Street."

Dependability is a splendid virtue even in a meat market. For some time we have earned the name of being dependable. Our service and the quality of our meats is the best day in and out. Buy here with confidence.

SMOKED MEATS OYSTERS POULTRY

ALL KINDS OF BULK PICKLES

FRESH FISH ON FRIDAYS.

—FRESH—

MEDINA CREAMERY BUTTER

STEFFEN'S SANITARY

—Cash—

MEAT MARKETS

"Cleanliness" is our motto.

FARMINGTON Phone 122

Open All Day until 8:00 P. M. Evenings.

Located in Farmington State Savings Bank Bldg.

Ferland's Needlecraft and Art Shop

We carry an exclusive line of imported and art goods in Maderia—Portia—French and Italian embroideries and lace.

Also a full line of silks, satins and Gorette Gowns and Tricotine and serge dresses

We specialize in infants' wear and ladies' silk lingerie.

1627 GRAND RIVER, AVE., DETROIT.

In Ferry Field Building Near West Grand Boulevard.

Try a Liner-It Pays