

## BEST TIRES AT BEST PRICES

U. S. TIRES—PLAIN—USCO—KNOBBY—CORD  
GOODYEAR GOODRICHBUY YOUR TIRES NOW  
FORD SALES & SERVICEAutomobile Accessories Repairing of All Kinds.  
Cars Washed and Polished

## FIVE POINTS SERVICE GARAGE

Seven Mile Road and Grand River

Storage Day and Night Service.  
HERMAN TENHOFF FRED NEWMAN  
Proprietor. Manager  
Telephone 125-M-4.MARKS HELP TO  
IDENTIFY AUTOS

Looking Devices Are Good Protection Against Depredations of Meddlesome Boys.

## FEW CARS ARE WELL LOCKED

Professional Thief Discards License Plates, Changes Car and Engine Numbers and Obliterates Every Mark.

It is believed that at least one automobile out of every dozen manufactured and sold is stolen. How many stolen machines are ever recovered by their rightful owners is another question.

Good looking devices or thief signals are not to be despised. They are a sure protection against depredations by meddlesome boys, and will cause the automobile thief so much trouble that he will look for a car that is easier to take away. Where several cars are parked this will be hard to find. Comparatively few cars are left well locked, and many stand without being locked at all. Owners sometimes forget to take the switch key with them, leaving it in the switch lock.

## Work of Professional.

Should a professional automobile thief get your car, he will take good care that you will not recognize it should you see it again. You know it now chiefly by its license plates, car and engine numbers, and a few scratches, dents and slight peculiarities.

He discards the license plates, changes the engine and car numbers and obliterates every mark by which you might identify your car. Caution is his middle name. He likes to tear down several cars of the same make and reassemble them so that no two of their principal parts will be found in any one car together. He has looked everything over with great care to see whether your initials are hidden under a washer, or whether there are prick-punch holes anywhere concealed. Last, you identify some scratch or dent he may use new fenders and repaint the car.

## Way to Secure Car.

If you could make a decisive identification of a body, frame, engine, gear case, rear axle housing or front axle, you would stand the best kind of a chance to take that car away from a crowd of claimants, even if your markings could be found on but one of those parts.

How near can we come to a system of indelible markings that are of chance duplication, and readily discoverable by the owner or someone authorized by him? There is safety in numbers. Several markings on each part make it less likely that all can be obliterated.

## Note of Secret Marks.

Take, for an example, the following memorandum of a secret mark: "74, in horizontally to the left of center of the engine, not suspicious, but a scrape of the paint and find a drilled hole filled with lead."

If you have several such marks, carefully recorded, on different parts of the frame, your identification will become more positive, as it is highly improbable that two or more of these marks would be accidentally duplicated by any other person.

Many other methods of marking the car will suggest themselves to the inventive owner. It must be remembered, however, that secret identification marks are worthless unless they are carefully and exactly recorded and a record of them preserved.—Henry R. Thayer in Popular Science Monthly.

Robbie Most Painful.  
It is safe to say that there are more robins in this country than birds of any other species. All bird census show this conclusively. The robin has become a welcome and well-remembered guest to all who were born amid rural scenes. He has secured a place in our literature. He makes himself perfectly at home with us, and knows all the folks.

## Easter Inspiration

By W. H. Wray, M.D.

Awake new hope at  
Easter tide!  
Carol ye birds! Fresh  
flowers spring!  
Let child-hosannas  
swell the praise—  
Life's "Eventide" its  
anthems raise.  
Hope's promise looks  
to endless days;  
At Easter tide awake  
and sing.

## GROWING LILIES FROM SEEDS

Federal Department of Agriculture  
Tells of Results of Experiments  
It Has Been Making.

In growing Easter lilies from seeds the time of planting depends upon how the florist intends to handle his stocks and possibly upon which his seed becomes available, says the Bureau of Plant Industry, United States Department of Agriculture, in discussing the results of experiments with growing the flowers from seed instead of from bulbs. Sowing they say, can be done



Type of Perfect Lily.

If any season if suitable moisture conditions for germination are maintained, in northern climates, if seed is planted out of doors, it should be sown in the autumn for spring germination.

Until the trade process seed of the lily and offers it for sale, it is pointed out, it will be necessary for the grower to raise his own seed. The best way to do this now is to procure imported bulbs either in the early winter, when they are generally offered for sale, or at Easter time, when most of the plants are in blossom, and grow seed for planting the following January.

## EASTER MORNING



Just an early investigation. Evidently the Easter rabbit had been "on the job" early, greatly to the satisfaction of this small boy.

## Mexico's Holy Week.

Mexico has her holy week, celebrated with pomp and splendor, sad devotion and odd customs that still linger in the land of Montezuma. The people go from all points of the compass far and near, on their annual pilgrimages to Guadalupe, the holiest shrine of all Mexico, where they congregate in immense crowds. There the descendants of a nation sunk in paganism for centuries after the Crucifixion meet to celebrate the divine tragedy that was enacted in Syria 1900 years ago.

The most solemn week of all the weeks of the year is Passion week in Mexico City. Images, icons and crucifixes are to be found everywhere. The most remarkable of the ceremonies is the blowing up of Judas. The betrayer is represented as a misshapen monster. Hundreds of his images are sold on Good Friday. They are filled with explosives which blow the doomed figures to atoms when let off on Saturday morning.

Spiritual Influences of Calvary.  
Let the world on this Easter, with all its materialism and all its blood-balls, be compared with the world at the first Easter and it must be recognized that from Calvary radiated spiritual influences whose very incomplete results so far encourage the most splendid visions of what humanity will become.

## Professional Cards

Wm. S. McNAIR  
ATTORNEY-AT-LAW  
Office—64 Main St.  
Northville, MichiganDr. L. W. SNOW  
Eye, Ear, Nose and Throat  
Specialist.  
Office Hours: 11—12 a.m. 2—4 p.m.  
Tel. 162. Northville, Mich.Dr. LAVINA A. KETCHUM  
—Osteopath Physician—  
OFFICE  
Alseum Theatre Building  
Northville, MichiganPERKINS' ORCHESTRA  
P. L. PERKINS, Mgr.  
Phone 306-W.  
Northville, Mich.Z. R. ASCHENBENNER, M. D.  
Physician and Surgeon  
Office Hours  
11:00—12:00 2:00—4:00  
Evenings Except Sun. and Wed.  
7:30—10:00  
Farmington, Mich. Phone 160.

## Detroit United Lines

## Farmington Time Table

(Eastern Standard Time)

Cars leave Farmington Junction for Detroit at 4:45 a.m., 5:15 a.m., 5:45 a.m., and 6:57 a.m., and leave Farmington for Detroit at 6:08 a.m., 6:38 a.m., 7:47 a.m., and 8:48 p.m., (also 9:53 p.m., 10:53 p.m., to Junction only 11:53 a.m. and 1:03 a.m.)

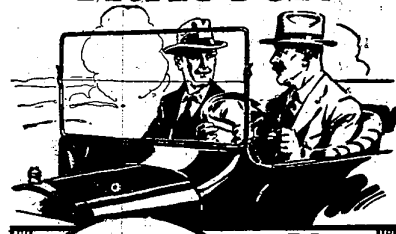
Cars leave Farmington Junction for Orchard Lake and Pontiac at 5:45 a.m., 6:15 a.m., 6:35 a.m., and hourly to 10:53 p.m., 12:19 a.m. First car leaves Farmington Junction for Northville at 6:00 a.m.; thereafter cars leave Farmington for Northville at 6:35 a.m., and hourly thereafter until 10:53 p.m., 12:19 a.m., 1:03 a.m., 1:58 p.m., 8:25 p.m., 9:53 p.m., 10:53 p.m., 12:19 a.m.

Cars connect at Northville with those for Plymouth and Wayne over the D. J. &amp; C. Hourly limited service to Ann Arbor.

## Psychic Note.

The man who has the biggest head will not necessarily get the biggest hair.

## Fordson TRACTOR

"Yes  
I've more  
time for  
Myself  
Since  
I Got  
a  
Fordson"

## Fordson

The Fordson Tractor is taking much of the drudgery out of farm life; it is solving the labor problem; it is reducing the cost of preparing land by almost one half of what it was with horses; and it is saving one third to one half of the farmer's time; and making farm life more attractive.

The Fordson will run your threshing machine—and at the most opportune time for you. It will operate the milking machines, saw your wood, fill your silo, pump the water, and take care of every kind of belt work—

And don't forget—it will plow six to eight acres in a ten hour day, handling two plows with ease.

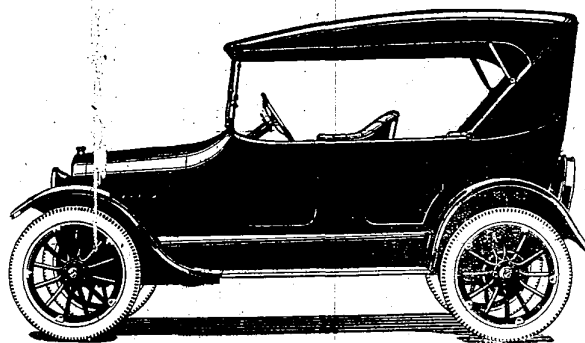
Thus the Fordson is the ideal year-round tractor. It will pay for its fall and winter keep in many ways.

There's a big story to tell you about the Fordson—and a drive one—come in and get the facts. Or, if you prefer, telephone or drop us a card and we will bring them to you.

FORD SALES & SERVICE  
Farmington, Mich.

## CHEVROLET

For Economical Transportation

This New Superior  
Touring Car

\$525

F. O. B. FLINT, MICH.

This model has the distinction of being the lowest priced, fully equipped, quality automobile on the market. No other car affords so much for so little money. And in the matter of gasoline, oil and tire replacement costs this car is more economical than all other makes.

Terms, \$170.00 Down Payment; Balance Monthly

Lake Drive Garage

Distributors

Farmington, Mich.

Phone, 31-F-3