

Buy a *Ford*
and Spend the difference
Henry Ford



\$319
F.O.B.
DETROIT

The Ford Runabout—the Salesman's greatest economizer of time and money. His most dependable means of transportation. His greatest asset in his drive for business.

Let us show you how a Ford Runabout will actually increase your earnings. Terms if desired.

FORD SALES & SERVICE

Phone 151

Farmington, Mich.

FARMERS!

Renew your subscription to the Farmington Enterprise this month for one year at our regular price of \$1.50 and we will send you

The Michigan
BUSINESS FARMER
"Michigan's Greatest Farm Paper"

TO JANUARY, 1923

absolutely without cost to you and simply as an incentive for you to renew during the present month, whether your time is out or not. This is a great offer, don't miss it. MAIL YOUR REMITTANCE OR LEAVE IT OUR OFFICE.

THE FARMINGTON ENTERPRISE

GEORGE I. COOK
General Blacksmithing
HORSE-SHOEING A SPECIALTY
Farmington, — — — Michigan.

BEST TIRES AT BEST PRICES

U. S. TIRES—PLAIN—USCO—KNOBBY—CORD

GOODYEAR GOODRICH

BUY YOUR TIRES NOW

FORD SALES & SERVICE

Photographic Hint.

The ordinary photographic plate, which is not color sensitive, is really blind to certain colors. These colors are red, yellow and green. The result is that all are rendered black in the print. Suppose one wanted to photograph a shawl with a design in black, red, yellow, and green. The ordinary plate would render these colors almost all the same. In the picture it would be difficult to say where the red ended and the yellow began. But by using a color-sensitive plate and a color filter on the lens, the differences would be shown and the design would be clear.

America's First "Zoo."

Independence square in Philadelphia was the site of America's first zoological garden. It was there that Charles Wilson Peale, in 1794, transferred the museum which for a decade previous he had maintained in his home, Third and Lombard streets. The Philosophical society, at Sixth and Chestnut streets, gave him permission to use its building for his large collection of portraits of men of the Revolution. He started the zoological garden in the rear of the building. An eagle was among the living specimens. Above its cage was an inscription: "Feed me well and I will live a hundred years."

GET IN AND OUT OF AUTOMOBILE

Many People Do Not Seem to Realize What a Moment's Forethought Will Do.

PROPOSITION QUITE SIMPLE

Doors Were Made to Enter and Leave Through and Not Bear Weight of Person—Hinges Are Made Comparatively Frail.

Getting in or out of an automobile is an awkward job for most people. They do not seem to realize that with but a moment's forethought, that it can be made a very simple proposition, says Washington Post. To begin with



Getting Into a Motor Car.

the average person when about to get into a machine proceeds to put the right hand, if entering from the curb side, well out on the door and to bear upon this hand and arm. Doors were made to enter and leave through, not to carry the weight of a person. They are supported to the side of the body by comparatively frail hinges secured to an upright post that forms one of the body supports. Once a door is sprung it is well-nigh impossible to repair it so that it will again assume its normal position as part of the body, fit snug and not rattle. The reason is because not only is the door itself sprung out of shape, but the body post



Completing the Entrance.

likewise has been sprung and it is impossible to remedy this without rebuilding body posts and sills.

Getting into an Auto

As illustrated in the first drawing the matter of getting into a motor car is simple enough. If one will but put the right foot on the running board, grasping the body of the car, one hand on each side of the door, and



Getting Out of a Car.

as the weight is put upon the right foot exert a slight forward pulling motion with the hands and arms, at the same time lifting the left leg clear of the running board and placing it on the floor of the car as illustrated in the second drawing. With the body in this position as the right foot is drawn into the car the body can easily and naturally be turned using the left foot as a pivot and a sitting position on the seat of the car taken without awkwardness or inconvenience and likewise without bumping one's head against the top of the machine.

Getting Out.

In getting out of a machine if one will but grasp the side of the body with the right hand, at the same time placing the right foot on the running board, as shown in the third illustration.



Exit From Car Completed.

tion, their body is in such a position that it is but a simple matter when the weight is put on the right foot, the head extended beyond the line of the top, to reach over the foot grasp the other side of the door coming with the left hand, at the same time putting the weight of the body in the right foot and two hands and arms, bringing the left foot out of the car, and to the curb, as shown in the fourth drawing.

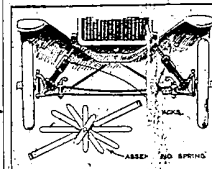
REMOVAL OF BROKEN FRONT-SPRING LEAF

One of Most Frequent Troubles With Light Car.

Method Illustrated for Replacing Damaged Part Without Climbing—Two Jacks Afford Satisfactory Means of Lifting.

One of the frequent troubles experienced with the light automobile is breaking of the frontspring leaves. The drawing illustrates methods that facilitate the replacing or removal of a broken leaf, and the assembly of the leaves without climbing. The leaves are assembled in fashion, as shown, about the center bolt. The nut is easily screwed on a thread or two, after which the leaves are brought into their proper position, and the nut tightened.

In lifting the car to see above the axle, to remove or replace a spring, two jacks are placed, one on either side, with their bases resting against the axles, the heads, resting under the lamp brackets on each side. The wheels are blocked so that they cannot rock. This affords a quick method of lifting, and one that gives a clear working space. In cases where the



Methods of Elevating the Front of a Light Automobile for Removing or Replacing a Front Spring, and of Assembling the Leaf Without Climbing.

center bolt of the spring does not align with the slot in the frame, by simply raising one jack and lowering the other, the body will shift enough to make them line up. The same method can be applied to lifting the rear axle, although the lift will necessarily be greater on account of the considerably greater deflection of the rear spring.—G. A. Lingers, Washington, D. C., in Popular Mechanics Magazine.

LESSON IN GENTLE BRAKING

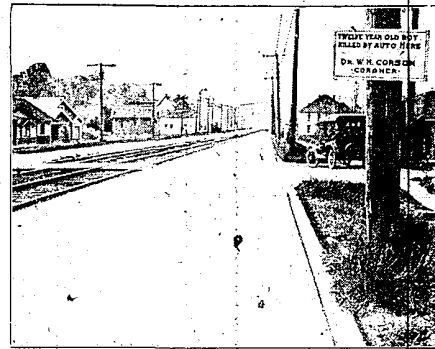
No Quicker or Certain Way of Sending Tire to Junkman Than to Stop With Jerk.

Apply the brakes comparatively and the car will soon show its gratitude, because gentle brake application reduces the strain on the wheels, springs and other parts. If the brakes are applied with full force at least one, if not both wheels are likely to lock, and in sliding along the ground a noticeable amount of rubber is scraped from the tire, at the point where it contacts with the ground. There is no quicker nor more certain way of sending tires quickly to a rubbish heap or the junkman. Harsh brake application tears the brake lining under and pulls and racks the whole car. Much greater economy will be obtained and much less trouble will be experienced if the brakes are used as sparingly as possible.

Added Value.

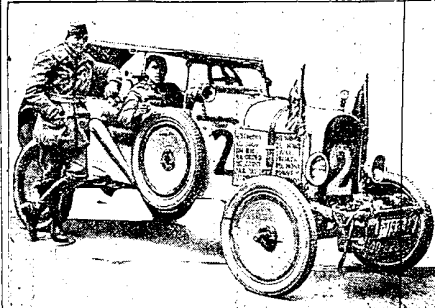
"I bought this Nivale bicycle from an Indian in Arizona." "It was made in New Jersey." "Well, give me credit I had to go West to buy it." Birmingham Age-Herald.

CORONER POSTS WARNING PLACARD AT DANGEROUS SEATTLE CROSSING



In an effort to cut down the toll of fatal accidents throughout Seattle and King county, Dr. W. H. Corson, King county coroner, has started the practice of erecting signs at places where fatalities have occurred, stating in detail the particular accident. Herewith is shown one of the signs erected at a dangerous street corner.

WORLD'S CHAMPION TRAVELERS RECENTLY ARRIVED IN LONDON



After having traveled more than 92,000 miles, Capt. W. W. Wenderwell (standing) and L. Kuqua (at wheel) recently arrived in London. They have now toured through the U. S. A., Canada, South America, Mexico and Australia, and are to start on the continent at once. They will not complete their tour until 1924.

WHY NOT

Let

The ENTERPRISE

Be YOUR

Silent Salesman

???????