

Add beads to needlepoint

Victorians loved beads:

They also loved feathers, trims, braids, laces, frills and ruffles — the more the better. The earmark of a Victorian lady was her needlework and she stitched it by the acre.

The industrial revolution had given money and leisure to masses of women who never had either before. To bolster their social status, they went into fancy needlework in a big way. The results, to put it as kindly as possible, were mixed.

One Victorian variation did produce delightful results, however. The incorporation of glass beads into woolen needlepoint gave a textural difference that was enchanting — when handled with restraint. Beads did decrease the utility of the needlepoint, however — who wanted to sit on a rough glass surface? These stitcheries usually ended up on valences or footstools.

BUT THE IDEA is worth considering today when much of what is stitched ends up framed on the wall. In such cases, the glittering three-dimensional quality of the beads can be very lovely when played against the soft colors of wool. Here's how to add beading to your needlepoint.

The most important criterion is fitting the beads to the canvas gauge so that they are not crowded, or so loosely packed that the canvas can be seen behind them. My favorite match is 14 gauge canvas worked with seed beads. These are inexpensive, come in a wide range of colors, and cover the canvas as if they'd been designed to do so — which perhaps they were.

The next trick is to get the beads to lie flat on the canvas. Stitch them on with the Continental, never the Half Cross. The latter hasn't enough tension on the back to hold the beads in place on the front. Work beads from left to right only. Don't try to work back and forth along the rows as you would if you were



the lively needle

Mary Kay Davis

stitching. At the end of a row, bring your thread across the back to the left side and work your next row right over it. In this way, all beads slant in the same direction, which is important.

I'VE FOUND THAT I like working on interlock rather than floating canvas. Interlock is the flatter of the two and beads seem to stay in place better on it.

Stitching is simple, but constant tension is necessary to keep beads from falling out of place. I found it easier to work with a relatively heavy white thread and had my best luck with — you won't believe this — Johnson and Johnson's waxed dental floss. It threaded the needle like a dream, was thick enough to fill the hole in the bead, and stayed in place after the stitch was finished. Whether it will survive the ages is a question, but for the here and now, it does very nicely.

Work with stretched canvas, using a No. 10 between quilting needle. It's small enough to pass through the beads and has an eye large enough to thread easily. Any pattern graphed for cross or tent stitch can be beaded — one bead equals one stitch. Work beads first and then stitch the wool background in around them. The results are smashing.

Gardening for apartment dwellers

I would like to grow some of my own vegetables this year and although I live in an apartment I do have a small balcony that gets lots of sun. What are my chances of getting things to grow under these conditions?

Ellen T. Troy

consumer mailbag

Very good, thanks to Joann Kowalski, a Concern volunteer who is sympathetic to urban and apartment dwellers. Determined to encourage green thumbs wherever they may be, Ms. Kowalski gathered the information now found in a new publication called "Gardening in Containers." This well-timed brochure offers help in choosing the proper type and size of container, tips on soil, planting, care and feeding and specific plants that do well in this kind of environment. For a copy send 25 cents to Concern, Inc., Detroit, 1 Northfield Plaza, Troy, What is EPA?

M.K., Garden City

The Environmental Protection Agency (EPA) is a government agency charged by Congress to protect the nation's air, land and water systems. Under a mandate of national environmental laws focused on air and water quality, solid waste management and the control of toxic substances, pesticides, noise and radiation, the agency strives to formulate and implement actions which lead to a compatible balance between human activities and the ability of natural systems to support and nurture life. Questions or requests for information from

EPA Region V which serves Michigan can be addressed to EPA Region V, 230 S. Dearborn, Chicago, Ill., 60604.

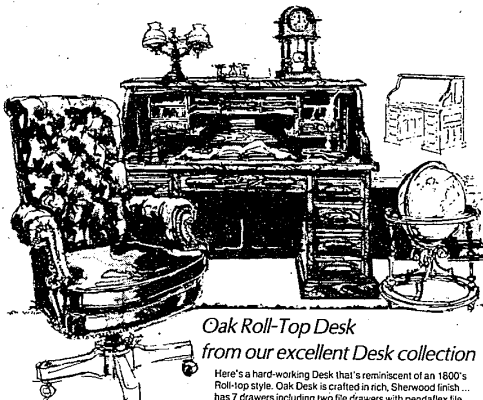
GRACE R. GLUSKIN

Pianist will perform

Brazilian pianist Flavio Varani will perform Monday at Temple Beth El in a benefit for the Sisterhood Braille Bindery. The performance will be at 1 p.m. and a \$10 donation will be asked.

Staffed by 17 volunteers, the bindery produces 1,000 books in braille each year which are sent to all parts of the United States and to several foreign countries.

From Wiggs "Man's World, Leather & Library Shop"...



Oak Roll-Top Desk from our excellent Desk collection

Here's a hard-working Desk that's reminiscent of an 1800's Roll-top style. Oak Desk is crafted in rich, Sherwood finish, has 7 drawers including two file drawers with pendaflex file folders. Roll-top is lockable with 17 pigeon-holes, two drawers and interior light. Desk back is finished for "center-of-room" location.

54" x 30" x 49 1/2" high, \$1100.

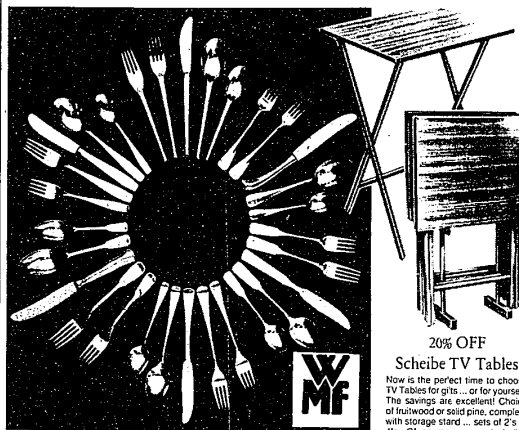
We have a marvelous selection of genuine top-grain Leather Desk Chairs... in a great selection of styles and colors. Genuine leather is a dream to own... to clean; just whisk it with a damp cloth. I

from \$349.

Visa Card, Master Card or Wiggs Plan 25... open Mon., Thurs. & Fri. 'till 9 P.M.

644-7370 • Telegraph at Long Lake Road (18-Mile) Bloomfield Hills

Don't miss our Special Offers: 20% OFF Fraser's Stainless & Scheibe TV Tables, 25% OFF Armetale and International Stainless Bonus Sale!



20% OFF

Scheibe TV Tables

Now is the perfect time to choose TV Tables for gifts... or for yourself. The savings are excellent! Choice of fruitwood or solid pine, complete with storage stand... sets of 2's or 4's. Of course we are including special orders in our sale prices! Come in today.

Great Savings on the 15 Patterns from the Classically beautiful flatware line of Wm. F. Fraser's Stainless Steel Flatware

Wonderful values... wonderful variety! 15 of our graceful Fraser patterns are on sale. Of course, you know the unmatched quality of WMF flatware, its balance weight and design. Contemporary or traditional... it has strong appeal to the sophisticated and discriminating. Save 20% on all teaspoons, too. Choose your pattern: Helmslie, Dornis, Line, Edinburgh, Cannes, Pilgrim, Finesse, Murray Hill, Norlica, Spoleto, Salzburg, Action, Suffolk, Arctica and Stuart. Steal stainless steel flatware.

5-Piece Place Settings:

Reg. \$16 to \$42.50... SALE \$12 to \$34



25% off Mug Sale

8 Wilton Armetale Mugs... all different designs... at unheard-of savings of 25% OFF! This is the right opportunity for you to buy mugs with unusual (and quite marvelous) quilting! The mugs are made of Armetale metal... a protected metal alloy that chills to an unbelievable cold in 60 seconds. You'll be pleasantly surprised. They're tough... won't break, crack, chip or dent. Safe to use... non-toxic and approved. Guaranteed free of manufacturer's defects for life of product. SALE FROM \$11.25 to \$15.35 EACH. Sale ends 5/3/80.

International Fine Stainless

BUY A 50-PC. SET AND GET 3

BONUSES WORTH \$81!

Enjoy this truly exceptional value now! Buy a 50-pc. set of International Stainless in your choice of 4 patterns: Westminster, Embassy, Silhouette and Windtower for only \$89.95. If you buy it now, you'll receive 3 BONUSES WORTH \$81! What a wonderful value! 50-pc. set is a complete service for 8.

- Special Orders
- Mail Orders
- Phone Orders: 645-5390
- Visa, Master Card, Plan 25
- UPS Service

Telegraph at Long Lake (18 Mile Road) Bloomfield Hills • 644-7370 •

There's big inflation-fighting news at Wiggs!

Bigelow's introductory Newsmakers CARPET SALE



Seven Beautiful Bigelow Beauties Sale \$10.95 to \$16.95 sq. yd.

Here are the Bigelow broadlooms that are making news with the newest and most fashionable styles and textures... all in a wide, wide range of glorious new colors... and all at very special low introductory prices. Every yard of Bigelow carpet gives you: Bigelow's exclusive Mark of Performance® ratings to help you select the best carpet for each room in your home... Scotchgard® Carpet Protector... and Bigelow quality NOW AT SPECIAL SALE PRICES! Sale ends 5/17!

SYNCOPE: A subtle, multi-color saxon in smart, easy-care nylon that will keep its good looks for a long time. 12 vibrant colors. Sale \$10.95 sq. yd.

CANDISCENCE: A glamorous saxon with radiant highlights on a subtle pearled shell pattern surface. Easy-to-maintain Antimark III nylon in 16 colors. Sale \$15.95 sq. yd.

ARMOUR: A smooth, luxurious saxon of custom-tufted Assoc® nylon. Easy to live with... easy to love... 20 sensuous colors in a pure elegant tone. Sale \$16.95 sq. yd.

PROMENADE: A beautiful, well-designed new saxon in soft, resilient, first quality tightly twisted, heat-set nylon. 15 fashion colors. Sale \$12.95 sq. yd.

ENDANGERMENT: A velvet soft saxon in high-luster Trevira® Polyester yarn for "smoothness, density & resilience. In 20 shades, perfect to deep tones. Sale \$15.95 sq. yd.

ALLEGRE: A smooth, elegant saxon highlighted to add tip-toe definition of yards... Antimark III nylon with patina-like texture. Sale \$15.95 sq. yd.

CHAMADE: A classic plush with a contemporary twist. Smooth plush surface is interspersed with tightly twisted fringe yards. Easy-to-maintain Antimark III nylon. Sale \$15.95 sq. yd.

VISA CARD, MASTER CARD, WIGGS "PLAN 25"

TELEGRAPH AT LONG LAKE RD. (18-MILE) BLOOMFIELD HILLS • 644-7370 OPEN MONDAY, THURSDAY & FRIDAY 'TIL 9 PM