

County vote helped Ted edge Carter

By TOM LONERGAN

Southfield and Farmington area Democrats helped give Sen. Edward M. Kennedy an Oakland County victory over President Jimmy Carter in last week's party caucuses.

The Massachusetts senator received 55 percent of the Oakland County presidential preference vote, cast in four congressional district caucuses last Saturday.

Only those who had joined the Democratic party by Feb. 26 were eligible to vote in the caucuses.

The caucus vote apportioned convention delegates for the two presidential candidates. When all the counting was over, Kennedy and Carter had split the state's 141 delegates, 71 to 70. Kennedy received 48 percent of the caucus vote statewide (7,793) to Carter's 46 percent (7,567).

OAKLAND DEMOCRATS in the 17th District, which includes Southfield, Lathrup Village, Farmington and Farmington Hills, preferred Kennedy over Carter by a 124-vote margin, 175-51.

Kennedy won in the 18th District, which includes most of Oakland County from the Birmingham-West Bloomfield area, north to Pontiac and west into Livingston County, by 74 votes (285-211).

In the 18th District, Kennedy lost the Oakland County portion (Troy and the populous southeast corner) to Carter, 436-389, but won the Macomb portion of the district by 53 votes (141-88).

Oakland County voters in the 12th District, which includes small portions of Avon Township and Rochester, preferred Kennedy, 12-10.

EUGENE W. KUTHY of West Bloomfield, the Carter campaign's Oakland County chairman, said the President's support among county Democrats was "about what was expected."

"Jimmy Carter was very soundly beaten by (Arizona Congressman Morris) Udall in 1976 in Oakland County," Kuthy said. "That didn't happen this time."

Kennedy gained a 3-2 delegate edge in the 18th District by virtue of a six-vote margin in the overall caucus vote (530-524).

Apparently, five more Democrats voted in the 18th than were qualified. Kuthy said Tuesday the 18th caucus vote may be challenged.

Kennedy and Carter split the 18th District's four delegates. Kennedy gained a 3-2 edge in 17th District delegates.

JOANNE SMITH of Farmington Hills, a Kennedy supporter, was elected to one of three Kennedy delegate seats from the 17th District.

She "was not surprised" that Kennedy won 62 percent of the 17th caucus vote.

"We were on the phone and we saw the strength for Kennedy increasing," said Ms. Smith, a former Farmington Hills city council member. She lost a re-election bid to the council due to her support for senior citizen and low-income housing in Farmington Hills.

The 17th was the target of a strong United Auto Workers organizing drive, which enabled Kennedy to defeat Carter, 297-214 in the Wayne County portion of the district.

A month before the caucus vote, Ms. Smith said the Wayne County portion (northwest Detroit and Redford) was "touch and go" for Kennedy. "In the last few weeks, we have seen more of the issues being raised," she said.

Elected as alternate Kennedy delegates from the 17th were Aldo Vagozzi of Farmington Hills and Susan Reznick of Southfield.

IN THE 19TH, Mary Ryan Taras of Birmingham was elected to one of two Kennedy delegate seats, campaigning from a hospital bed. The other went to State Rep. Charlie Harrison of Pontiac. Thomas Brookover, a Walled Lake city councilman, was elected a Kennedy alternate.

Kuthy was elected an alternate delegate for Carter. Delegates for Carter are State Sen. Kerry Kammer of Pontiac and Waterford teacher Gail Nolin.

About 40 percent of an eligible 40,535 Democrats voted statewide. In the Oakland County districts, the turnout ranged from 36 percent in the 17th to 40 percent in the 19th. In the 18th, 38 percent of those eligible voted.

EMU to host tour of China

A 2½ week study tour of mainland China will be sponsored this summer by Eastern Michigan University. The tour will be conducted by Dr. Jiu-Hwa L. Upshur, associate professor of history at Eastern and a specialist in Chinese history and the arts.

Cities scheduled to be visited include Hong Kong, Peking, Luoyang, (Loyang), Xi'an (Sian), and Guangzhou (Canton). The tour will run from Aug. 16 through Sept. 4.

For registration information, call Sandra Wright at the EMU Continuing Education Office at (313) 497-2424.

"This study tour of China offers a glimpse into modern Chinese life and society and an opportunity to view glories of her rich past," Upshur stated.

The tour is open to the public. However, participants must enroll at the university and take the tour for credit or audit credit. Three graduate or undergraduate credit hours in "History of Modern China" can be earned through participation in the tour.

Participants will meet with Upshur to determine a course outline and individual projects.

Upshur will hold three orientation meetings for tour participants prior to leaving for China. During the tour, Upshur will hold regular discussion meetings and will act as an informal interpreter for the group.

Space for the tour is limited to 12 persons.

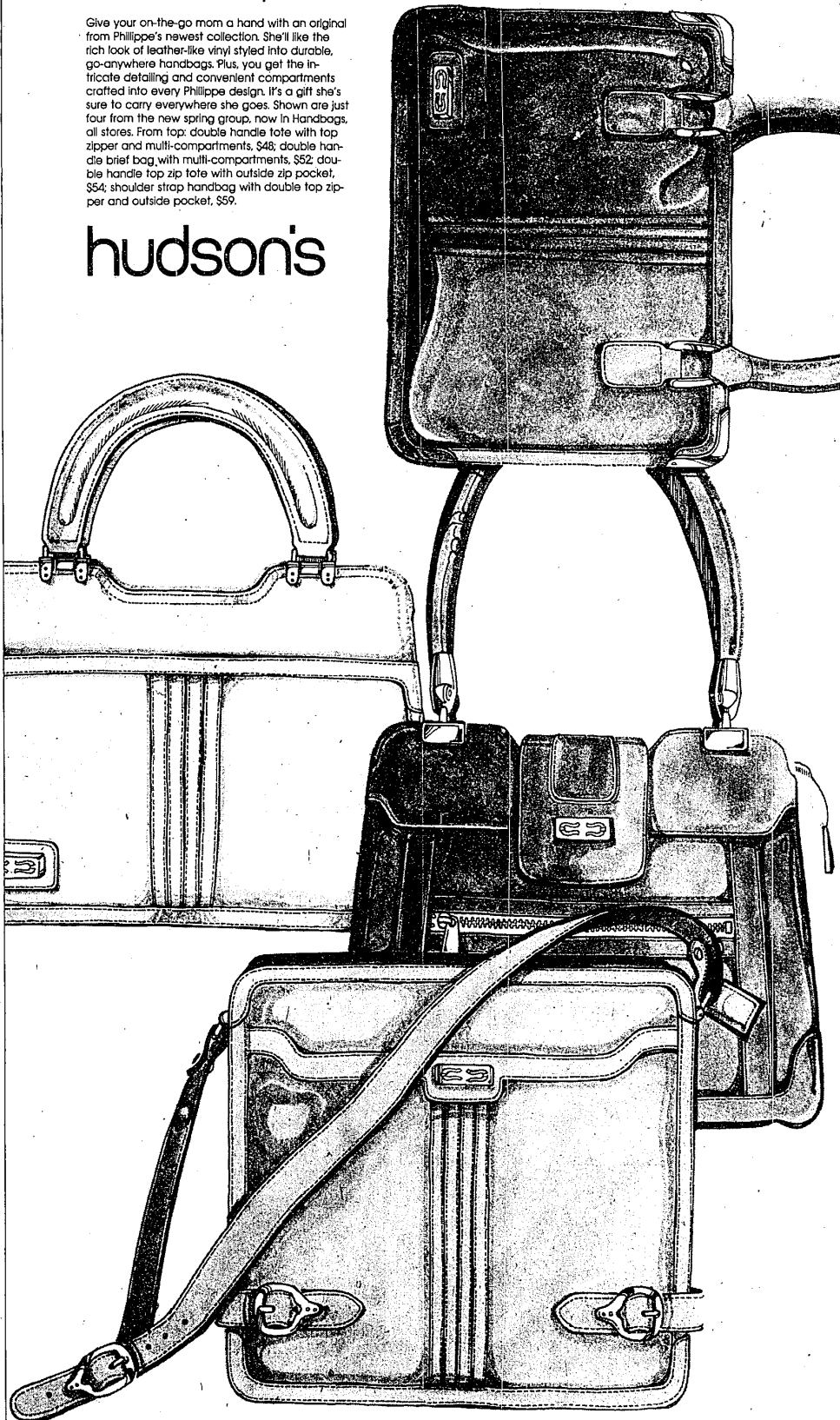
The tour cost is \$2,495, which includes round-trip airfare between San Francisco and Hong Kong and most accommodations, food and tour expenses. Round-trip airfare between Detroit and San Francisco, and EMU registration fees and tuition costs, are not included in the tour price. The estimated total cost is between \$2,880-2,920. Tour arrangements are being handled through Travel Headquarters in San Ramon, Calif.

Mother's Day May 11

Phillippe designs
a new collection of
quality leather-like handbags
for Mom and you

Give your on-the-go mom a hand with an original from Phillippe's newest collection. She'll like the rich look of leather-like vinyl styled into durable, go-anywhere handbags. Plus, you get the intricate detailing and convenient compartments crafted into every Phillippe design. It's a gift she's sure to carry everywhere she goes. Shown are just four from the new spring group, now in Handbags, all stores. From top: double handle tote with top zipper and multi-compartments, \$48; double handle brief bag with multi-compartments, \$52; double handle top zip tote with outside zip pocket, \$54; shoulder strap handbag with double top zipper and outside pocket, \$59.

hudson's



Open Monday through Saturday: Northland, Eastland, Pontiac, Westland, Oakland, Southland and Twelve Oaks 9:30 till 9; Lakeside, Fairlane and Ann Arbor 9:30 till 9:30; Flint 10 till 9:30; Downtown open 9:30 till 5:45.