

Keep out!**GOP stops SEMTA RenCen bus route**

The Republican National Convention this week in Detroit will be keeping Southeastern Michigan Transportation Authority (SEMTA) buses out of the Renaissance Center.

"The buses won't be going into the Renaissance Center because of the traffic," said Bob Campbell, of SEMTA's scheduling department.

Normally, buses from Wayne and Oakland counties loop around the Renaissance Center.

But next week, the buses will loop around the Chrysler freeway service drive between Jefferson and Lafayette.

THE MAIN LOADING points for SEMTA bus riders will be Jefferson and Beaubien, and Jefferson and Brush. Both stops are on the north side of Jefferson.

There won't be any changes in loading or exiting locations for the commuter trains between Pontiac, Birmingham and Detroit.

Because of the Detroit city workers strike, SEMTA buses have been shuttling rail riders between the Renaissance Center station and downtown locations, a function normally

handled by Detroit Department of Transportation buses.

There will not be any added commuter rail runs. The Budd Co., however, will conduct test runs on the commuter rail line of its new railroad cars. Some Republican convention corporate visitors have been invited on the test runs.

SEMTA'S BUS schedule will remain the same during convention week, said Campbell. "With all the added traffic, it may not appear that everything is running (normally)," he added.

There will be SEMTA signs on Jefferson marking bus stops. And SEMTA representatives wearing bright red buttons that say "Convention bus information" will be stationed along Jefferson.

If some downtown rallies scheduled this week spill over into the streets, Campbell said there may be "emergency rerouting to get us out of the way . . . in case the city police deem it necessary."

Buses which run along Jefferson could also be rerouted if the police close down any part of the street, he said.

OCC loses trustee

The Oakland Community College board faces the task of appointing a successor to Trustee Lila Johnson, who reportedly plans to resign.

Mrs. Johnson, of Huntington Woods, had served on the OCC board since the college district was formed in 1974 and had served the last two years as chairperson.

THE BOARD'S next scheduled meeting will be Thursday, Aug. 14 on the Orchard Ridge campus, Orchard Lake Road at 14606, in Farmington Hills.

She was elected in 1978 to a six-year term, so her successor will serve until the 1982 election. Under Michigan law, her successor would then have to face voters to win the final two years of the term.

Mrs. Johnson's intent to resign was related to the Royal Oak Daily Tribune, and confirmed by her husband, Leonard, but she herself was unavailable for

comment at press time.

A college spokesman said the college had received no formal notification that she would resign. Three times in the past the board has filled vacancies because of resignations — the last time in 1976.

LAST MONDAY, Mrs. Johnson and veteran Trustee David W. Hackett of Avon Township were in a 5-2 minority as the board elected Earl Anderson, chairman and Suzanne Reynolds an alternate delegate to the Michigan Community College Association. But Mrs. Johnson refused to comment publicly on the reasons for the apparent split.

A college trustee recently predicted that "Lila Johnson will get tired and resign" before her term expires, but the source asked not to be identified.

Last spring, the board voted to name an auditorium in the new southeast campus in R-oyal Oak in her honor.

INTRODUCING
THE
FINE LINE
OF
DISTINCTION



20% OFF
ON OUR
COMPLETE LINE OF
BERVEN CARPETS!

Mid-Summer Sale ends August 30.

Towne and Country Interiors

Dearborn 2349W Michigan Ave. east of Telegraph 965-3481

Bloomfield Hills 4027 Telegraph at Longfellow Rd. 642-8822

Rochester Hills 4027 Rochester Rd. on Vanhook Rd. 652-3500

Open daily 10 a.m. to 6 p.m. Free color computer shopping. Master MasterCard.



BERVEN OF CALIFORNIA.

Since 1939, Berven has been creating America's most distinguished expressions in finer-crafted carpets...from the living room to the executive suite. And now, that unique look, feel and warmth of Berven of California is available for your discriminating selection.

Murphy named to SEMCOG

Oakland County Executive Daniel T. Murphy was recently elected a vice chairman of the Southeast Michigan Council of Governments (SEMCOG).

Murphy was elected by the seven-county group's General Assembly, composed of government officials from throughout southeast Michigan.

Murphy, a Republican, replaces Wayne County Commissioner Richard Manning, D-Redford, as the fifth SEMCOG vice chairperson.

The others, all re-elected, are Saline Mayor Donald Shelton, Shelby Township Treasurer Mary Ellen Parrott, St. Clair County Commissioner William Smiley and Robert Smith, president of the Livingston Intermediate School District.

Trenton Mayor Robert L. Bovitz was re-elected SEMCOG chairman. SEMCOG coordinates regional planning and monitors air and water quality in southeast Michigan.

On the level, we've got it all for the folks back home.

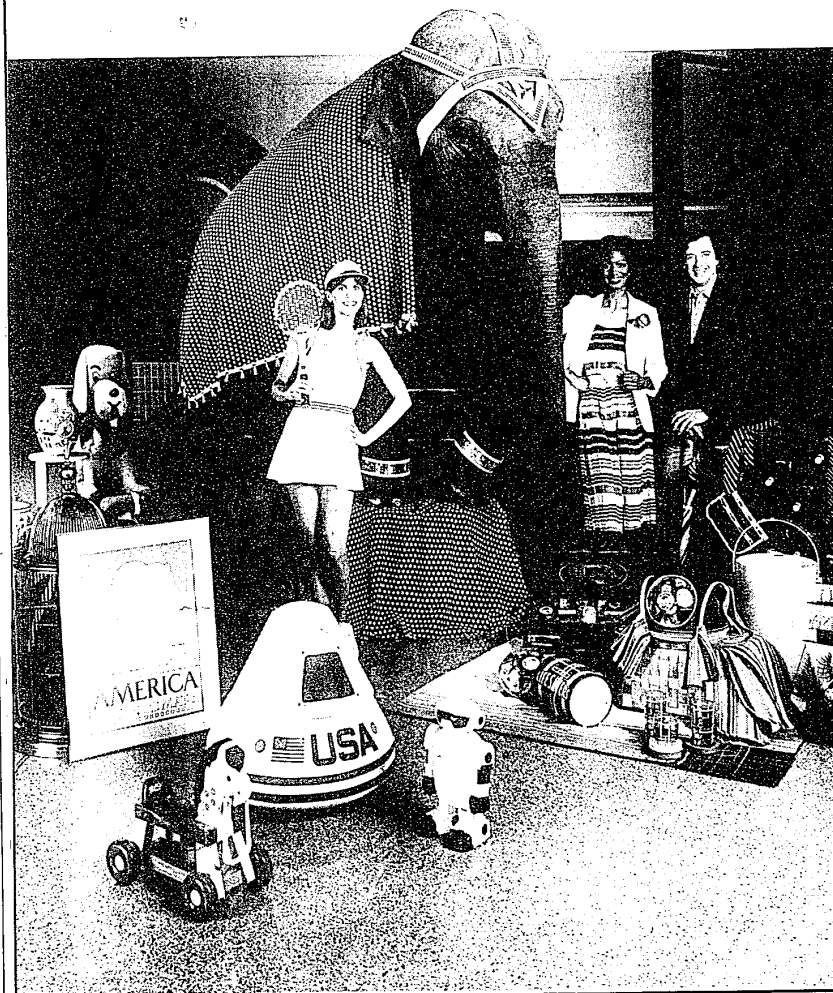
Welcome! While you're in Detroit attending the convention, come to us! We've got gifts for the whole family. Something pretty for the lady. A handsome outfit for him. And a big selection of things the kids will really love.

And we've got it easily and conveniently. You'll find our center easy

to get to from your hotel. And once you're here, our easy, one-level shopping makes finding your items a cinch!

So come on in. Because we've got it all. On the level!

Northland
C E N T E R
Greenfield at Eight Mile Road—Southfield

**KEEP IT UP, AMERICA**

We're doing it. We're driving less, planning trips more wisely, keeping our cars in tune—we're taking the simple but necessary steps to save gasoline... and money. Why money? Because wasted gas is wasted money.

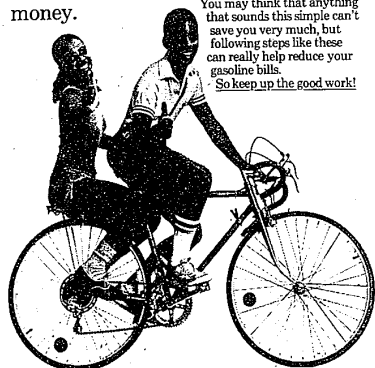
And we're doing even more to make the most of our gas and our gas dollars. Things like:

■ **Driving at a moderate speed and a steady pace.** 35 to 45 miles per hour is the most efficient driving speed (no more than 55 on the highway). Select routes that include long smooth stretches of road so you can drive at a steady pace.

■ **Not idling the motor for more than 30 seconds.** Anytime you park and wait for more than 30 seconds, turn off the ignition. Restarting takes less gas than idling.

■ **Leaving the car home once in a while.** When you can, share a ride or use public transportation. Or try walking, biking... or even skating! And many errands can be handled effectively by mail or phone.

You may think that anything that sounds this simple can't save you very much, but following steps like these can really help reduce your gasoline bills. So keep up the good work!



LITTLE BY LITTLE, IT ALL ADDS UP.

ENERGY
U.S. Department of Energy

A Public Service of
The President & The Vice President