

# BIRMINGHAM LUMBER'S ENERGY SAVINGS SALE!

## STOP WASTING FUEL & MONEY...INSULATE NOW! INSTALL CERTAINTIED INSULATION

YOU'LL SAVE PLENTY OF AIR CONDITIONING ENERGY THIS SUMMER...KEEP YOUR HOME FUEL BUDGET UNDER CONTROL NEXT WINTER, TOO! THE HIGHER THE R-VALUE, THE GREATER THE INSULATING POWER. ASK US FOR THE FACT SHEET ON R-VALUES.



3 1/2" x 15" KRAFT R-19 COVERS 70 SQ. FT./ROLL	\$9.75
8" x 15" KRAFT R-19 COVERS 40 SQ. FT./ROLL	\$9.19
6" x 23" KRAFT R-19 COVERS 61.33 SQ. FT./ROLL	\$14.75
10" x 18" KRAFT R-19 COVERS 32 SQ. FT./ROLL	\$12.55
8" x 15" ATTIC R-19 COVERS 40 SQ. FT./ROLL	\$8.99

### ANDERSEN WINDOWS



MANY TO CHOOSE FROM  
-NARROW LINES  
-GLIDERS  
-DOUBLE-HUNG  
**30% OFF**

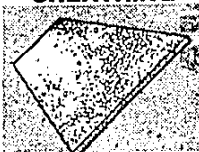
### THE ENERGY SAVING DOORS

#### THERMA TRU STEEL ENTRANCE DOOR



THERMA TRU OFFERS MORE SECURITY, INSULATION & BEAUTY THAN THE CONVENTIONAL DOOR.  
3'0" x 6'0"  
#223 **\$169.95**

### THERMAX EXTERIOR SIDEWALL SHEATHING



4' x 8' x 1/2"  
**\$6.49 EACH**  
WHILE SUPPLIES LAST

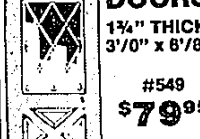
### BEADBOARD



### FOAM INSULATION FOR WALLS AND CRAWL SPACES

1" x 2' x 8' **\$2.69 EACH**  
2" x 2' x 8' **\$5.49 EACH**

### EXTERIOR PANEL DOORS



1 1/4" THICK  
3'0" x 6'0"  
#549 **\$79.95**  
#612 **\$99.95**  
#812D **\$119.95**  
UNDER THE BEAUTY OF THESE DOORS YOU'LL FIND THERMA TRU'S SUPERIOR INSULATING VALUE

### ENERGY SAVING PRODUCTS



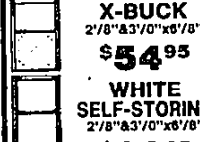
PERM-E-LASTIC GLAZING COMPOUND 8 OZ. SIZE **99¢ EACH**  
FRANKLIN CAULK 11 OZ. SIZE **\$1.69 EACH**  
M.D. WEATHER STRIP 1 1/4" x 17' **\$4.99 EACH**

### DACOTHERM POURING INSULATION



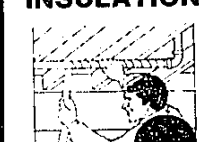
EASY TO INSTALL  
THE HIGHER THE R-VALUE THE GREATER THE INSULATING POWER. ASK US FOR THE FACT SHEET ON R-VALUES.  
3 CU. FT. BAG **\$4.99 BAG**

### ALUMINUM COMBINATION STORM DOORS



WHITE X-BUCK 2'8" x 3'0" x 5/8" **\$54.95**  
WHITE SELF-STORING 2'8" x 3'0" x 5/8" **\$69.95**  
GLAMOUR FULL-LITE 3'0" x 6'0" **\$72.95**

### ARMSTRONG PIPE INSULATION

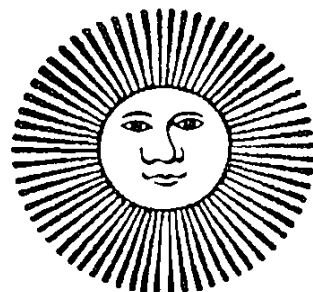


1/2" x 18' ..... **\$3.99**  
3/4" x 18' ..... **\$3.99**  
WHILE SUPPLIES LAST

# Tax breaks are

In 1979, Gov. William Milliken signed into law a bill (P.A. 605 of 1978) offering an income tax credit for the installation of solar, wind, or water energy conversion devices.

In compliance with the law, the Michigan Department of Commerce/Energy Administration has prepared rules defining the eligibility criteria.



## 1. What is the tax program?

The program is the result of a new Michigan law that offers state income tax credits to individuals who install solar, wind or water energy conversion systems on their residential properties.

## 2. How does the tax program work?

Michigan property owners will be able to claim a credit against their taxes for a percentage of the costs for the construction, equipment and installation of a solar, wind or water energy conversion device installed in a residence. For example, if a taxpayer owes \$2,500 in income tax and is eligible for a \$1,500 solar, wind or water energy conversion device tax credit, only \$1,000 in taxes must be paid. Or, if a taxpayer owes \$1,000 in income taxes and is eligible for a solar, wind or water energy conversion device tax credit of \$1,500?, he or she will receive a \$500 state income tax rebate.

## 3. What types of solar, wind, or water energy conversion devices qualify?

The law defines an eligible solar, wind or water energy conversion device as "a mechanism or series of mechanisms designed primarily to collect, convert, transfer or store for future use solar, wind or

water energy for the purpose of heating, cooling, or electric supply..." It would exclude "those parts of a heating cooling or electric supply systems that would be required regardless of the energy source being utilized."

Eligible systems include, but are not limited to, active and passive solar, wind, ground water heat pumps, low-head hydro and photovoltaic energy systems.

## 4. Does the law address wood energy conversion systems?

Fireplaces, stoves and wood-assisted furnaces are not eligible under the law. However, they are eligible if they provide back-up heat for a solar, wind or water energy conversion system.

## 5. How much is the individual tax credit?

For certified solar, wind or water energy conversion systems, the credit will apply to systems installed between Jan. 1, 1979, and Dec. 31, 1983. The percentage of the costs

# SOLAR LIVING SAVES MONEY

- DOMESTIC HOT WATER SPECIALISTS
- CERTIFIED BY STATE OF MICHIGAN M79006
- WORKING SYSTEMS ON DISPLAY
- 40% FEDERAL TAX CREDITS AVAILABLE
- SOLAR POOL HEATERS
- WOOD STOVES
- FREE ENERGY AUDITS
- 200 REBATE AVAILABLE
- HELICAL WIND TURBINES

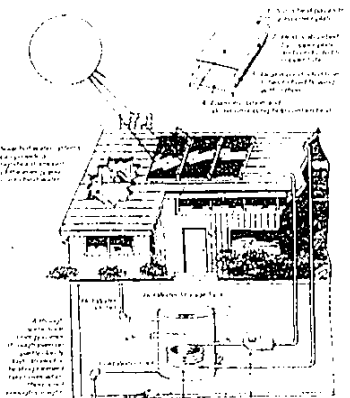
How solar collectors use the sun's energy to heat water.

Construction of a Solar Heat Collector

## MICHIGAN ENERGY SYSTEMS

31044 FORD RD.  
GARDEN CITY  
427-4500 Ext. 51

Division of  
Beresh & Riedel, Inc.



Energy for a strong America.



# BIRMINGHAM LUMBER

A Division Of **Erb** Lumber

777 SOUTH ETON ROAD

TELEPHONE 644-3636

STORE HOURS: MON-FRI: 7:30-5:30  
SAT: 8:00-4:00, CLOSED SUNDAY

CASH & CARRY PRICES GOOD THRU 8-5-80