



Warming up to their own furs, three men who ought to know how to invest their funds this fall. Ed Chudik, left, opts for full-length raccoon, \$3,995. Harvey Kozin selected a

wheat color coyote zip front parka jacket. And Bob Roberts will wear a full-length natural nutria in a classic great coat style.

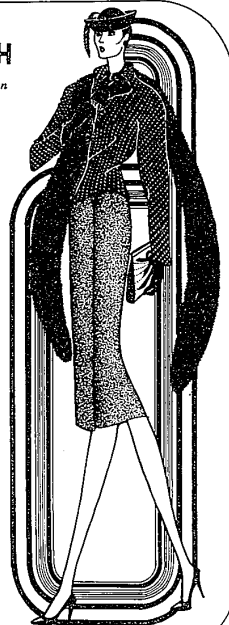
**KAYE NORTH**  
*in the Valley of Fashion*

...has it all  
for Fall!

We excel  
in  
sizes 2 to 12

**KAYE NORTH**  
*in the Valley of Fashion*

574 N. Woodward • 647-6965 • Birmingham

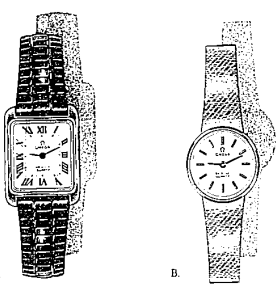



A DAZZLING COLLECTION OF BACK TO SCHOOL CLOTHES FOR BOYS AND GIRLS EVERYTHING FROM A TO Z

BOYS & GIRLS INFANTS TO SIZE 16.

3617 W. MAPLE BIRMINGHAM, MICHIGAN 647-4808

*gould's*  
CHILDREN'S BOUTIQUE



OMEGA

Woman's 18K yellow gold-filled Quartz watch with mineral crystal. A. \$375. B. \$375.

**Omega. For people who only have time for the finest.**

The precision accuracy of quartz. The superb craftsmanship of fine jewelry. Plus the Omega unique time setting system that lets you change time zones without losing a second!

**Lake Jewelers**  
100 S. Woodward, Birmingham, MI. 644-5315  
Open daily 10-5:30, Fri. til 9 PM



**Timeless Dressing by Umbra for Parnes Feinstein, Inc.**

At the office or on the go you're always in excellent taste in a shirtdress of "Rosewood Ballet Suede". Brass trimmed belt and print scarf for accent. Camel or green.

Sizes: 6-16  
\$110.00



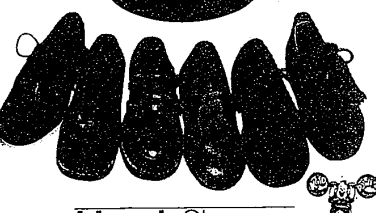
101 W. Long Lake Rd. Bloomfield Hills, Michigan 646-3810

Store Hours: 10:00-5:30 Monday thru Saturday

**YUM YUMS**

A NEW TASTE IN CHILDREN'S SHOES FROM

Child Life




**HackShoes**

235 Pierce • Birmingham  
**Hack's Kid Power Shoe World**  
6734 Orchard Lk. Rd. in the West Bloomfield Plaza

**Tadmores**

Specializing in Large and Half Sizes  
Sizes 16½ to 24½




Plymouth 550 Forest Westchester Square 453-2350  
Birmingham 217 S. Woodward 647-6585

*Lilly Pulitzer*

**Classy and Casual Corduroy...**

...skirts, jackets, pants in a wide selection of colors for you...from "Lilly"



*Lilly Pulitzer*  
RESORTWEAR

51 WEST LONG LAKE RD • BLOOMFIELD HILLS • 645-1790  
KIMBERLY KORNER • 20311 MACK AVENUE GROSSE POINTE WOODS • 881-9296