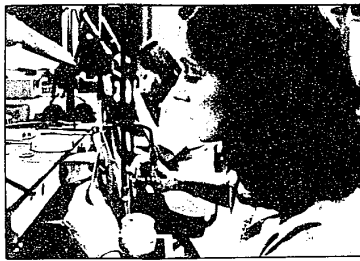
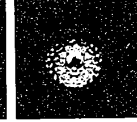


She's sure to go dancing in Valentino's black velvet dress that has eye appeal at the waist with a silk structured bow and a full lace inset at the back, \$1,050 at Hattie Inc. His navy pin stripe vested suit is from Tottingham's.

At left, silk-look teal and raspberry asymmetrical short gown with jacket, \$180 at Michael Getsoff. The blue and turquoise silver and gold shot silk chiffon plaid by Richilene, \$500 at Walton Pierce. At rear, short gold lame and silk tapestry print chemise by Sonia Rykiel, black bow at the throat, Maud Frizon pumps and Fendi evening clutch, all from Hattie Inc. His Bill Blass tuxedo from Steve Petix. Her black velvet formal gown with white satin taffeta bowed bodice is by Richilene, \$300.



### Special Ordered from Manufacturer to You...



We work with your diamonds or precious stones on the premises.

Bring your custom made ideas to us — we'll make them a reality in 14k, 18k gold or platinum. Or, buy your stones and finished pieces from us at wholesale prices to the public.



For the original style you're looking for, see:

**Sam Giacchina Manufacturing Jeweler**

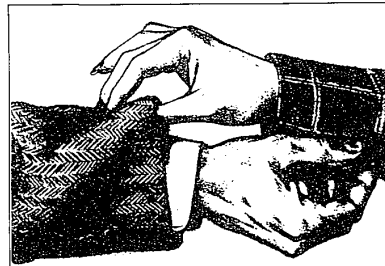
114 East Fourth Street

Rochester

656-1211



"Oh, I like the way that tweed feels."  
"Oh, I like the way that tweed feels."



Tweed. So lofty and comfortable. Come and touch our collection. For ladies and gentlemen. English Saxones. Irish Donegals. Scottish Shetlands. And Harris Tweeds, woven from wool sheared on

Scotland's Isle of Harris. Classically tailored by us into just the suit or sport coat you want. Made to fit you, not hung on a rack and then altered to fit anyone. A very important touch.

**Thom Keffler**

importer, haberdasher, clothier

The Great American Building • 642-0548 • 280 North Woodward Avenue

## Fashion at its highest—the new vested suit from Phoenix Clothes

For elegance & versatility, nothing surpasses this splendid two button vested suit that spells Fashion with a capital "F". Beautifully tailored to fit and flatter, it features flapped pockets, deep center vent and pick stitching all around. Have it now (with or without the vest) in the season's newest fabrics and colors. \$215



Lion's Charge • Visa • Master Charge  
Open Mon.-Sat. 10 to 9 Sun. 12 to 5 p.m.  
Bloomfield Miracle Mile Center • Telegraph at Square Lake Road

Gentlemen

**TEMPLET™  
TAILORING.**

Templet Tailoring™ is a totally new approach in men's wear. Robert Gwynn has developed techniques and engineered new methods and procedures through which a suit is manufactured and delivered.

Each Templet Tailored garment is designed and made specifically to the customer's individual specifications.

We invite all our friends to visit our shop for a complete explanation of

Templet Tailoring™  
PAT. PEND.

**Gwynn's**

THE  
TEMPLET TAILORING  
AND FINE ATTIRE  
FOR MEN



112 S. WOODWARD  
AT MAPLE  
BIRMINGHAM

A Well Fitted Garment Is Our Trademark