

Couple build future on links to the past

(Continued from Page 2A)

"But," said Mrs. Prowse, "I told my husband that I would give up other things, but I wouldn't give up a back stairway."

THREE WORKING FIREPLACES, living room, family room and master bedroom, plus a fourth non-working fireplace in the dining room, add a special charm. The dining room fireplace, Mrs. Prowse said, would have been in that location in the original house, so for the sake of authenticity and aesthetics, it is there. Because of the modifications in the upstairs floor plan, it couldn't be connected.

Along with the details of interior architecture such as wainscoting, molding, paneling, are the windows. One over the front door is made from original bulls eye glass.

The others, referred to in the antique world as "12 over 12," were custom made for this house by a Milford craftsman. There are 12 panes in both the upper and lower windows in each installation.

Mrs. Prowse is making curtains for all of the windows. In most instances, they will hang inside the window molding.

Wall and woodwork paint colors were chosen from those used at Williamsburg. In most rooms, the walls are a putty or off-white and the woodwork, the color that sets the color theme for the room.

Even the floors are special. They are wide-plank, pine, tongue and groove. Some are 8-inch boards, others are 10 inch. They are nailed from the top just as old floor boards were.

THE WOMEN OF Colonial America, Mrs. Prowse said, painted tinware in gay patterns, put stencil painting on the walls and often painted the wood floors to look like a rug when the real thing wasn't available.

In that heritage, which she respects, the energetic Mrs. Prowse will paint and put stencils on the front stairs, which open into the front entryway.

The risers, like the bannister and stairway posts, are putty color. She plans to use a charcoal on the steps and then stencil in designs in primary colors.

She has also designed several stencils to be used on the walls. Also on his list of things she wants to get done quickly are making curtains for all windows of the new house and putting in herb and vegetable gardens.

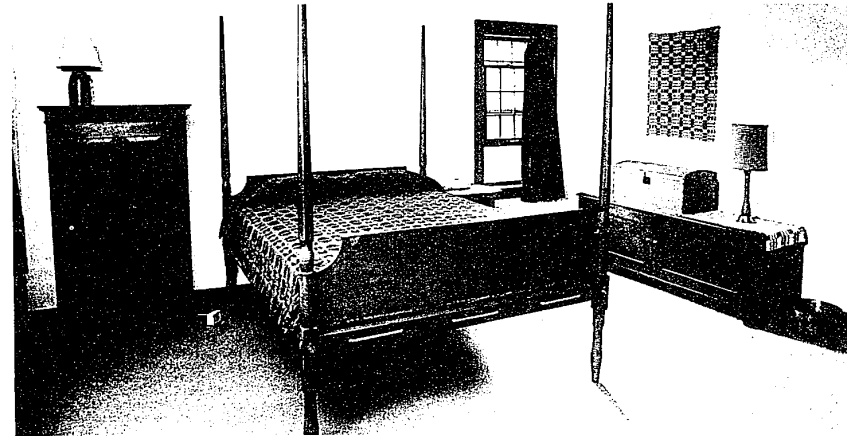
One of the joys about this house so far, and there have already been many, is the way it looks at night. All light fixtures, hanging ones as well as wall sconces, were made to order. They are electrified, but the shape, the material and the look is that of 200 years ago.

The Prowses like to turn on these small lights, upstairs and down, go out for a walk in the early evening and walk slowly back toward the house. They have the same appreciation for it that art collectors do for exceptional works of art.

The outside wood is finished with a redwood stain. The profile of the house is clear and strong. The faintly twinkling lights flickering through those small pane windows, well, that's a thrill for people who relish the continuity from past to present which this kind of a house can establish.



Lighting fixture in the dining room was carefully copied from the originals. It is electrified as are all the others, but it is true to its heritage in all other ways.

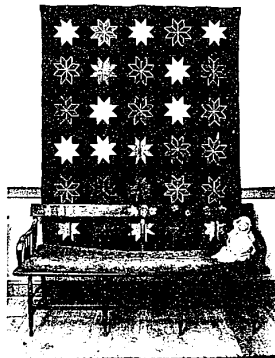


Queen size bed in the master bedroom varies from its original counterpart only in size. It was made to order by a master craftsman. Even the rope supports for the mattress are made in the old style. The bedroom colors are blue and red with the mint-condition antique coverlet on the bed as the focal point. Mrs. Prowse plans to make new window curtains and stencil a border on the walls.

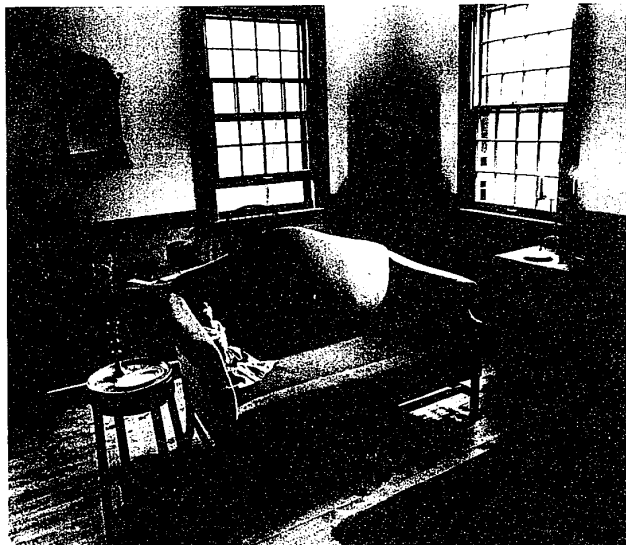
room colors are blue and red with the mint-condition antique coverlet on the bed as the focal point. Mrs. Prowse plans to make new window curtains and stencil a border on the walls.



Fireplace in the gathering room is one of four in the saltbox style home. When the Prowses tried it for the first time, they were delighted to find it functioned beautifully.



Amish quilt with black background hangs in the living room behind a family heirloom bench.



Living room furnishings, antiques and a few reproductions have been lovingly collected by the homeowners over many years.



open Mon., Thurs. & Fri. 'til 9

Wiggs...the only store of its kind in Michigan! Since 1903, an unequalled display of fine

Traditional Furniture & Accessories. One surprise after another...a never-to-be-forgotten experience. Browse through

14 tastefully appointed Galleries. Go back in history to the gracious European and American furniture designs, reproduced and shown

in over an acre of room-sized settings. Glean added inspiration from

our China, Crystal, Silver and Gift Shop. Coordinate your ideas in our complete Interior Design Studio.

Make your selections from such fine traditional furniture collections as: Henredon, Ethan Allen, Hekman, Statton, Hickory, Century, Hitchcock, Sligh, etc... over 60,000 sq. ft. of handsome room displays.



Wiggs

VISA, MASTER CARD, WIGGS PLAN 25 (50 DAYS SAME AS CASH)

TELEGRAPH AT LONG LAKE ROAD (18-MILE) BLOOMFIELD HILLS • 644-7370