

Volunteer enlists to fight cancer

Marise Levy of Franklin is helping to beat cancer.

As a volunteer information specialist in the Public Response Program of the Michigan Cancer Foundation she spends five hours a week helping to field some of the 6,000 calls that come in to the Meyer L. Prentiss Center each year.

"Patients have to be informed about cancer in order to ask important and relevant questions of their doctors," said the mother of two who is also a Wayne State University graduate with a major in clinical psychology.

"Cancer is still so mysterious. We have to take it out of the closet."

"You have to be well-informed and an empathic listener. You also have to be objective enough to determine whether a caller has a medical need or an emotional one so that proper information and referrals can be made," she said.

Volunteer Information Specialists attend a six-session training program and receive ongoing instruction from professional staff.

Each volunteer commits at least four hours each week in the public response office where they also maintain informational files, fill requests for educational literature, compile current news clippings on cancer and collect data for use in assessing public needs.

Mrs. Levy is also a visitor in the Reach to Recovery program, where volunteers who have undergone cancer surgery visit other patients after their surgery.

She is a tutor to grade-schoolers in the Farmington Public Schools and has



MARISE LEVY

aided in a number of campaigns to promote books and reading. She also served on the Legislation Committee of the Detroit Public School System and the Child Safety Council of Detroit.

The Foundation's toll-free information line in the 313 telephone zone is one of the largest such programs in a national network of cancer information services, directed by the National Cancer Institute.

Inquiries will be taken by calling 833-0710.

Why you should buy only the finest kitchen cabinetry.

The cost of cabinetry averages about 25% of the total cost of a typical kitchen remodeling project. It would be false economy to compromise on cabinetry when you can get Mutschler without adding a great deal to your total costs. You can afford the finest. And we're anxious to show you why Mutschler is the finest.

MUTSCHLER
KITCHENS OF BIRMINGHAM

3455 Southfield Road Birmingham, Michigan 48009 (313) 645-5120

The Village Outlet

**ANNOUNCING . . .
SUNDAY HOURS**

12-4 P.M.

Rochester Outlet
from

November 2nd til December 21st

Find Brand Names and Designer
lines at **20% to 60% OFF** Regular
retail prices for the entire family.

Shoes • Clothing • Linens
Lingerie and Gift Items

Open Daily 10-5:30
Fridays til 9 p.m.
401-415 Walnut, Rochester

The Farmington Outlet will be open
Sundays 12-4 beginning Sunday, November 30th

Scoliosis

Research on scoliosis, or curvature of the spine, will receive funds from sale of this Christmas card carrying a message of peace. They cost \$6 for a box of 25, with a \$1.75 charge for postage and handling. Order from the Scoliosis Association of Michigan at William Beaumont Hospital, 3601 W. 13 Mile, Royal Oak 48072, or call 288-7221.

PAIX
PAZ
PACE
FRIEDEN

Peace....
a wish
for all Mankind

Reye's information via Ma Bell's lines

Information on Reye's Syndrome is now available by telephone from Tel-Med, a medical information service offered by Blue Cross and Blue Shield of Michigan (BCBSM) and the Wayne County Medical Society.

The three-minute tape recording on the mysterious disease is one of 330 tapes, written by physicians, which callers may hear by dialing 388-1876.

Improved diagnosis and treatment has reduced the fatality rate for Reye's Syndrome from 40 percent to 12 percent in recent years, said Dr. Armen Shekerjian, BCBSM vice president and medical director. Seventeen out of 67 confirmed cases were fatal in Michigan last year, while five of 40 have been fatal so far this year, he reported.

Mecum said Tel-Med has been averaging 25,000 calls per month.

"The Wayne County Medical Society is happy to support a service as valuable as Tel-Med," Roger Mecum, the society's executive director, said. "Tel-Med's millionth call (recently reached) is a milestone that underscores its value to the public."

Tel-Med operators are on duty from 11 a.m. to 9 p.m. Mondays-Fridays and 11 a.m. to 7 p.m. Saturdays. To hear the Reye's Syndrome tape, ask for tape number 5901.

Free folders listing subjects and tape numbers are available by phoning Tel-Med or by sending a long self-addressed and stamped envelope to: Community Relations 1908, Blue Cross and Blue Shield of Michigan, 600 Lafayette East, Detroit 48226.

THE REYE'S Syndrome tape reports that the disease usually follows a viral infection, especially flu or chicken pox, and occurs most frequently in the Midwest.

It appears more often between January and March and is common among infants to 18-year-olds.

Symptoms are persistent vomiting, listlessness, irritability, confusion, convulsions or delirium.

There is no known cause or cure but treatment can control the effects before they become fatal.

volunteers

The Oakland County Volunteer Bureau, a program of the Volunteer Action Center of United Community Services, has weekly listings of volunteer opportunities. Further information about these and other volunteer needs at more than 200 agencies may be obtained by calling the bureau at 642-7272. Any non-profit organization needing volunteer assistance may also call the bureau.

VOLUNTEER TRAIL GUIDES — Preserve in Rochester is looking for persons of any age who enjoy the outdoors, to lead small groups through the nature preserve using interpretive naturalist techniques. The time commitment involved is 9-11:30 a.m. or 1-3 p.m. during the week and occasionally on Saturdays or Sundays. Training is provided.

TYPIST — The Volunteer Network of Metropolitan Detroit is recruiting a volunteer typist to type and proof read their bi-monthly calendar of events. Interested persons should be expert typists, accurate, reliable, and have their own high quality typewriter.

CHILD WORKER, DRIVER, OR ADVOCATE — Shelter in Pontiac is seeking individuals 18 or older to fill important volunteer roles. Volunteers may work with children in tutoring, recreation or art projects. Drivers are also needed for the shelter residents as are persons to do advocacy work in the community for the victims of domestic violence. The hours are flexible and evening work is available.

GARAGE DOOR OPENERS

MODEL GS820D
NOW AVAILABLE THE NEW IMPROVED
\$180.00
INSTALLED
1 Year Warranty
Genie
MODEL GS880D
AUTOMATIC GARAGE DOOR
OPENER SYSTEM
\$195.00
INSTALLED
1 Year Warranty
ALADDIN GENIE Sales & Service
722-0810 335-8079
NORTHVILLE-MOVI WYOMING
PLYMOUTH-CANTON TROY-PONTIAC
FARMINGTON-SOUTHFIELD ROCHESTER-BIRMINGHAM

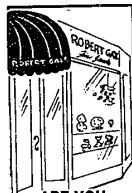
Are you in a **WARDROBE** quandry?
Are you in the process of re-evaluating your life?
DON'T make another clothing purchase before trying our method.

Build a wardrobe that will "work" for your lifestyle. Send us a stamped self addressed envelope and we will send you our **FREE** wardrobe arranging information. Get on the right track **TODAY!**

Write: "TRAVELIQUE"

3333 Sherbourne Rd.

Detroit, MI 48221



ARE YOU THINKING OF SELLING YOUR JEWELRY?

We have 35 years experience in the purchase of:

- Diamonds
- Gold Jewelry
- Watches
- Colored Stones

SEE US FOR A FREE APPRAISAL
ROBERT GALE, INC.

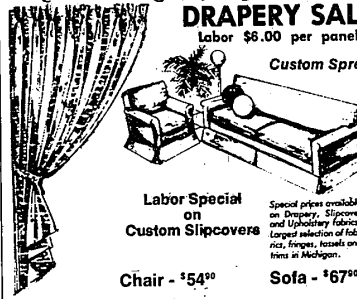
725 S. Adams
at 14th Mile
in the Arcade
at Adams Square
Birmingham
644-6850
AMPLE FREE PARKING

Atlantic Drapery Shoppe

DRAPERY SALE

Labor \$6.00 per panel

Custom Spreads



Labor Special
on
Custom Slipcovers

Chair - \$54.00

Special prices available on Drapery, Slipcover and Upholstery fabrics. Largest selection of fabrics, fringes, tassels and trims in Michigan.

Sofa - \$67.00

340 E. Maple, Birmingham

647-2020 647-0721

CARAVELLE by BULOVA

A lot of watch for a little cost



30% OFF
Every CARAVELLE

In Stock

While quantities last
(Does not include Quartz)

Northville Watch & Clock Shop

We specialize in the sale and repair of antique watches & clocks

132 West Dunlap • Northville • 349-4938

(one block North of Main Street off Sheldon Road)

Mon-Sat. 9-6
Sun 12:30-5



You Are Cordially Invited
to Our Annual

OPEN HOUSE

Sunday, November 2nd... Noon to 6 P.M.

November 2nd is an exciting day at Wiggs... the only Sunday of the whole year we are open! Make this a festive afternoon, and get some marvelous gift ideas, too. Let us show you the latest Furniture, Accessories, Wall Decor, China, Silver, Crystal and Pewter Gifts.

Get to know us... spend some browsing time with us. Take a "Christmas Walk" through our 14 American Traditional Furniture Galleries, including our Ethan Allen Showcase, The Herndon Gallery in the Colonnade, Georgetown Court, Carpet & Drapery Studio and our China, Silver & Gift Shop.

Refreshments Noon to 6 P.M.

Wiggs

Visa, Master Card,
Wiggs Plan 25

Fine Traditional
Furniture, China, Crystal,
Silver and Giftware

open Monday, Thursday
and Friday 'til 9

4080 TELEGRAPH
(at Long Lake Road—18 Mile)
Bloomfield Hills • 644-7370