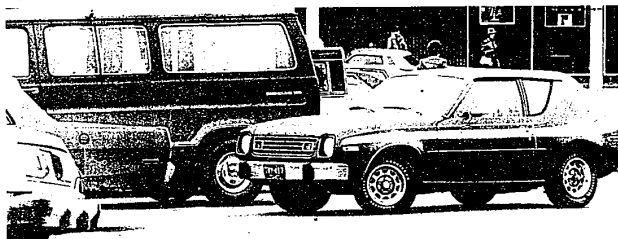




Shop, shop, shop around the clock almost describes the last minute scene in stores throughout the Farmington area as persons who vowed they'd

never procrastinate again lined up at the check out counters.



Desperation is mirrored in this parking lot move — a daring triple park on the part of the compact car.

# INSIDE ANGLES

BY MIKE OKRUTSKY

BY LOUISE OKRUTSKY

**RIGHT OFF THE BAT** IA wants to salute that downtrodden group which appears only during the holidays: the last-minute Christmas shopper. To all those poor souls who fill the stores right until closing time, IA offers this salute of condolences: □ □ □ □ □ □ □ □ □ □ (Think of them as wrapped presents.)

**ANOTHER GREAT** big salute goes out to the 35 members of Temple Beth El in Birmingham who handle duties usually assigned to volunteers of the American Red Cross and Our Lady of Good Hope Hospital. The group will staff the information desk at the Ambulatory Care Center in Novato during Christmas Day. For the third year in a row, Eric W. Evans of Farmington Hills is chairman of the temple's volunteer committee. To all of you, JA sends its warmest wishes.

**HAVE THE HOLIDAY** blues? Jo Sheehy, an older adult counselor from Catholic Social Services of Oakland County, leads a group discussion on the holiday season and its effect on us from 10-11:30 a.m. on Monday at the Gathering Place, Mercy Center Gate 4 on 11 Mile east of Middlebelt in Farmington Hills.

**IF YOU THINK** there'll be enough snow on the ground by Jan. 3 to cross country skis, you may want to sign up for the Farmington Hills Parks and Recreation Department's cross-country ski races and canoe trip. The excursion is open to persons 16 years old and older. The trip will take you into the heart of the Proud Lake Recreation Area. Participants will take their skis into a canoe and paddle back to their starting point. The trip will last about two hours. It starts at 2 p.m. on Jan. 3 in the Proud Lake Recreation Area at the Heavener Canoe Rental in Garden Road in Milford. Early registration is necessary. Call the parks and recreation department at 474-6115 for further information. There is a \$7 fee for persons who need to rent skis and the canoe and a \$4 charge for the canoe only.

**FOCUS ON LIVING** with Cancer will meet at 7:30 p.m. on Jan. 8 in the Orchard United Methodist Church, 30450 Farmington Road in Farmington. The purpose of this self-help group is to bring together patients and family members who have questions or are experiencing problems as a result of living with cancer. Participants are encouraged to discuss their mutual problems positively. For additional information, contact the American Cancer Society at 557-5353.

**BUSINESS STUDENTS** who have an interest in international business practices are invited to join one of four special seminar groups leaving for Europe this summer. The program is jointly sponsored by Lawrence Institute of

Technology in Southfield, Arizona State University and Southern Illinois University but students from any college or university are eligible. Four different tours are planned: May 17-June 13 in Athens, Rome, Paris, Bath and London; May 16-June 13: London, Paris, Luxembourg, Brussels and Amsterdam; June 13-July 12: London, Midlands of England, Scotland, Ireland and Bath; August 2-23, Amsterdam, London, Stoke, Edinburgh and Dublin.

The purpose of the seminar is to provide students with on-site exposure to the business environment and management methods outside of the United States. The participating countries were chosen for the variety of economic institutions, variety of approaches to managing business organizations and the role of the government in business relations. The attendees will visit companies and organizations as Bank of America, American Express, The World Bank, London Daily Mirror, the London Stock Exchange, Heineken, the European Parliament, British Petroleum, the Diamond Center and Wedgwood China. The cost of the tour varies from \$1,150-\$1,450 including ground transportation, meals, lodging, and seminar materials. There is extra. For further information, call Ernie Maier, LIT associate professor of management at 356-0200, ext. 54.

**LEARN THE BASICS** of winter camping and snowshelters at a public interpretive program Dec. 30 in Independence Oaks County Park, Clarkston. The program begins at the Twin Chimneys Shelter at 2 p.m. The cost of the program is covered by the \$2 park entrance fee. For non-county residents the fee is \$3.

Construction of a quinzee or other snowshelters will be demonstrated if weather and snow conditions permit. Kathleen Dougherty, Oakland County Parks naturalist, will conduct the seminar.

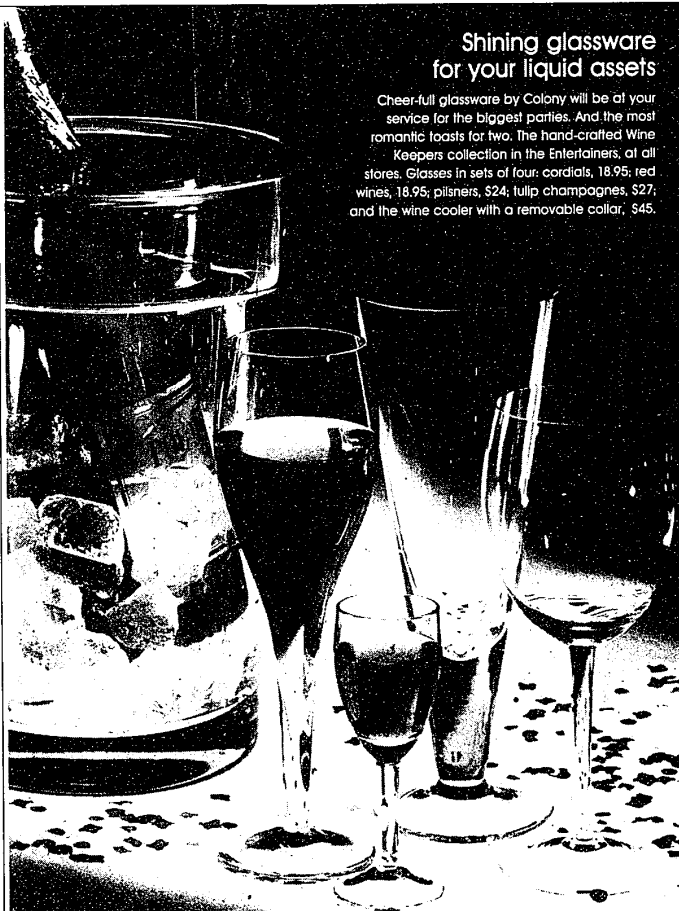
Other programs included in a series of four during the winter include "Basic Cross Country Skiing" on Jan. 10; "Astronomy on Skis," on Jan. 19 and "Owl Search on Skis" on Feb. 13. All programs require advance registration by calling 858-0903 from 8:30 a.m. to 5 p.m. on weekdays. An additional fee of \$1 per person will be charged for the Jan. 19 and Feb. 13 programs. Independence Oaks County Parks is located on Sashabaw Road, two miles north of I-75 in Clarkston.

**FARMINGTON** artist-designer John Parker Glick was honored by Wayne State University recently through a Distinguished Alumni Award.

**The PERFORMING Arts Guild of Northville** will conduct auditions for their presentation of "Grease" from 1-5 p.m. and 7-10 p.m., Dec. 29-30 in the Marquis Theatre, 133 E. Main in downtown Northville. Each audition should include a prepared song from the show, a photograph and a resume. Performances will be given on Feb. 13-14, 20-21, 27-28, March 1. For further information, call 945-1111.

Shining glassware  
for your liquid assets

Cheer-full glassware by Colony will be at your service for the biggest parties. And the most romantic toasts for two. The hand-crafted Wine Keepers collection in the Entertainers, at all stores. Glasses in sets of four: cordials, 18.95; red wines, 18.95; pilsners, \$24; tulip champagnes, \$27; and the wine cooler with a removable collar, \$45.



# hudson's