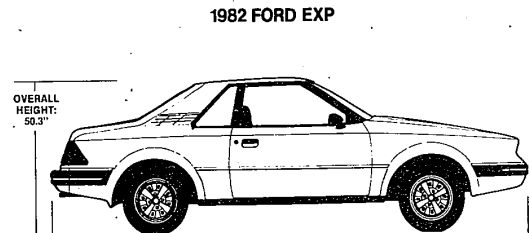


1955 THUNDERBIRD
OVERALL HEIGHT: 52.2"
WHEELBASE: 102"
OVERALL LENGTH: 175.3"



1982 FORD EXP
OVERALL HEIGHT: 50.3"
WHEELBASE: 94.2"
OVERALL LENGTH: 170.3"

New 2-seater

Ford will revive the two-seater passenger car in April when it introduces the 1982 Ford EXP (bottom). The car's size and appeal are similar to the classic two-seater Thunderbird produced 1955-57. But unlike the 1955

Thunderbird, which was powered by a fuel-thirsty 4.8-liter V-8, the EXP will be powered by Ford's more fuel-efficient 1.6-liter four-cylinder CVH engine.

868 Ford
Mustang 1967-69, 2-door, automatic, 31,000 miles. Call 452-1523
Mustang 1973-74, 2-door, 31,000 miles. Call 452-1523
Mustang 1975, V-8, AM-FM stereo, power steering, 18,000 miles. Call 452-1523
Mustang 1976, V-8, AM-FM stereo, power steering, 18,000 miles. Call 452-1523
Mustang 1978, V-8, AM-FM stereo, power steering, 18,000 miles. Call 452-1523
Mustang 1979, V-8, AM-FM stereo, power steering, 18,000 miles. Call 452-1523
Mustang 1980, V-8, AM-FM stereo, power steering, 18,000 miles. Call 452-1523
Mustang 1981, V-8, AM-FM stereo, power steering, 18,000 miles. Call 452-1523
Mustang 1982, V-8, AM-FM stereo, power steering, 18,000 miles. Call 452-1523

870 Jeeps & Other 4-Wheel Drives
Jeep 1974 Cherokee Golden Eagle, 4-door, 28,000 miles. Call 452-1523
Jeep 1976 Cherokee Golden Eagle, 4-door, 28,000 miles. Call 452-1523
Jeep 1978 Cherokee Golden Eagle, 4-door, 28,000 miles. Call 452-1523
Jeep 1979 Cherokee Golden Eagle, 4-door, 28,000 miles. Call 452-1523
Jeep 1980 Cherokee Golden Eagle, 4-door, 28,000 miles. Call 452-1523

872 Lincoln
Continental 1970 Lincoln Town car, Coach roof, loaded, 4 months old, 15,000 miles. Call 452-1523
874 Mercury
Sycamore 1974, 4 cylinder, 4 door, sport package, low mileage, very good condition. \$1100 or best offer. 355-3511
875 Oldsmobile
CUTLASS 1971, reg. gas, 2 door, automatic, good transportation. 1971-1972. Call 452-1523

876 Oldsmobile
CUTLASS 1971, reg. gas, 2 door, automatic, good transportation. 1971-1972. Call 452-1523
CUTLASS 1972, excellent condition, power windows, power locks, AM-FM stereo. Call 452-1523
CUTLASS 1973, Supreme, 2 door, automatic, 18,000 miles. Call 452-1523

877 Lincoln
Continental 1970 Lincoln Town car, Coach roof, loaded, 4 months old, 15,000 miles. Call 452-1523
878 Plymouth
HORIZON 1974, 4 door, 4 speed, power windows, power locks, rear defogger, 21,000 miles. Call 452-1523
880 Pontiac
Bonneville 1978, 4 door, automatic, 21,000 miles. Call 452-1523

884 Volkswagen
Rabbit 1976, 3 door automatic, looks & runs excellent, am-fm cassette. 452-1527
Rabbit 1978, Custom, regular gas, 2 door, Am-FM cassette, run good. 452-1527
Rabbit 1979, 3 door, stick, run good, Am-FM cassette, 4 door, excellent condition. 452-1527

886 Ford
Mustang 1967-69, 2-door, automatic, 31,000 miles. Call 452-1523
Mustang 1973-74, 2-door, 31,000 miles. Call 452-1523
Mustang 1975, V-8, AM-FM stereo, power steering, 18,000 miles. Call 452-1523
Mustang 1976, V-8, AM-FM stereo, power steering, 18,000 miles. Call 452-1523
Mustang 1978, V-8, AM-FM stereo, power steering, 18,000 miles. Call 452-1523

888 Ford
Mustang 1967-69, 2-door, automatic, 31,000 miles. Call 452-1523
Mustang 1973-74, 2-door, 31,000 miles. Call 452-1523
Mustang 1975, V-8, AM-FM stereo, power steering, 18,000 miles. Call 452-1523
Mustang 1976, V-8, AM-FM stereo, power steering, 18,000 miles. Call 452-1523
Mustang 1978, V-8, AM-FM stereo, power steering, 18,000 miles. Call 452-1523

Advertisement for 'Over Invoice!' featuring a cartoon character pointing to a large '\$' and '00' symbol. Text includes 'On All '81 Oldsmobiles in Stock New & Demos', 'New '81 Omega Coupe', 'Invoice \$6424 You Pay Only \$6503', and '220 in Stock New and Demos'.

868 Ford
Mustang 1967-69, 2-door, automatic, 31,000 miles. Call 452-1523
Mustang 1973-74, 2-door, 31,000 miles. Call 452-1523
Mustang 1975, V-8, AM-FM stereo, power steering, 18,000 miles. Call 452-1523
Mustang 1976, V-8, AM-FM stereo, power steering, 18,000 miles. Call 452-1523
Mustang 1978, V-8, AM-FM stereo, power steering, 18,000 miles. Call 452-1523

870 Jeeps & Other 4-Wheel Drives
Jeep 1974 Cherokee Golden Eagle, 4-door, 28,000 miles. Call 452-1523
Jeep 1976 Cherokee Golden Eagle, 4-door, 28,000 miles. Call 452-1523
Jeep 1978 Cherokee Golden Eagle, 4-door, 28,000 miles. Call 452-1523
Jeep 1979 Cherokee Golden Eagle, 4-door, 28,000 miles. Call 452-1523
Jeep 1980 Cherokee Golden Eagle, 4-door, 28,000 miles. Call 452-1523

872 Lincoln
Continental 1970 Lincoln Town car, Coach roof, loaded, 4 months old, 15,000 miles. Call 452-1523
873 Oldsmobile
CUTLASS 1971, reg. gas, 2 door, automatic, good transportation. 1971-1972. Call 452-1523

874 Mercury
Sycamore 1974, 4 cylinder, 4 door, sport package, low mileage, very good condition. \$1100 or best offer. 355-3511
875 Oldsmobile
CUTLASS 1971, reg. gas, 2 door, automatic, good transportation. 1971-1972. Call 452-1523

876 Oldsmobile
CUTLASS 1971, reg. gas, 2 door, automatic, good transportation. 1971-1972. Call 452-1523
CUTLASS 1972, excellent condition, power windows, power locks, AM-FM stereo. Call 452-1523
CUTLASS 1973, Supreme, 2 door, automatic, 18,000 miles. Call 452-1523

877 Lincoln
Continental 1970 Lincoln Town car, Coach roof, loaded, 4 months old, 15,000 miles. Call 452-1523
878 Plymouth
HORIZON 1974, 4 door, 4 speed, power windows, power locks, rear defogger, 21,000 miles. Call 452-1523

880 Pontiac
Bonneville 1978, 4 door, automatic, 21,000 miles. Call 452-1523
Bonneville 1979, 4 door, automatic, 21,000 miles. Call 452-1523
Bonneville 1980, 4 door, automatic, 21,000 miles. Call 452-1523
Bonneville 1981, 4 door, automatic, 21,000 miles. Call 452-1523

884 Volkswagen
Rabbit 1976, 3 door automatic, looks & runs excellent, am-fm cassette. 452-1527
Rabbit 1978, Custom, regular gas, 2 door, Am-FM cassette, run good. 452-1527
Rabbit 1979, 3 door, stick, run good, Am-FM cassette, 4 door, excellent condition. 452-1527

78 CHEVY PICKUP
V8, automatic transmission, power steering, power brakes, 30,000 miles. \$3888
79 ELECTRA LIMITED
4 door, loaded! \$5488
79 RIVIERA
Fully loaded, 27,000 miles. \$8388
80 OMEGA
4 door, air, automatic, power locks, 14,000 miles. \$6588
79 CUTLASS SUPREME
Air, stereo, Landau top. \$5988
78 CHEVETTE 2 DOOR HATCHBACK
Air, manual transmission, 35,000 miles. \$3788
77 MONTE CARLO LANDAU
Air, stereo. \$2988
77 HONDA ACCORD
5 speed, air. \$3688

Advertisement for 'I DON'T BELIEVE IT!...' featuring a man in a suit pointing to a large '\$29950 PER MONTH' price tag. Text includes 'Lease a 1981 CADILLAC FOR \$29950 PER MONTH', 'YOU CAN BELIEVE IT!', '25 AUTOMOTIVE PAYMENTS', '\$2,500 DOWN (CASH OR TRADE)', 'TOTAL OBLIGATION \$9987.50', 'PURCHASE PRICE OPTION \$7,800', and 'New taking orders on Cadillac's New "J. CAR" ... CIMMARRON (introduction - May 1981)'.

Advertisement for 'Glassman Olds' featuring a large 'Olds' logo and 'Glassman' text. Text includes '28000 Telegraph At The Tel-12 Mall', '354-3300 Open 'Til 9:00 Mon & Thurs. Even', and 'Keep That Great GM Feeling With Genuine GM Parts'.

81 Omega Air Conditioned
Power locks, tinted glass, side moldings, rear defogger, remote mirror, power door mirrors, power steering, deluxe wheel, bump 816A. Stock #140. Invoice \$7496 You Pay Only \$7575
81 Cutlass Supreme Coupe Air Conditioned
Tinted glass, floor mats, side moldings, edge guards, rear defogger, power mirrors, power door mirrors, AM/FM stereo, convenience group. Stock #192. Invoice \$7442 You Pay Only \$7821
81 Cutlass Supreme Brough Air Conditioned
R/R seat belts, tinted glass, floor mats, side moldings, edge guards, Landau, rear defogger, sport mirrors, stock wheels, steel belt casters, AM/FM stereo, leather trim, convenience group. Stock #189. Invoice \$8379 You Pay Only \$8678