

Support group forms to help women solve their various problems

In order to offer some realistic answers to the concerns of women, a General Support Group for Women is being developed by WomenCenter on Orchard Ridge Campus, Oakland Community College.

The group will meet from 7:30-9 p.m. on Thursdays in WomenCenter, Room 909, J Building. There is no charge.

The group will be made up of women of all ages who want to solve a particular problem in their life.

The group's open-format format will be let women present these issues or unresolved dilemmas in a supportive environment.

Clarification of needs and feelings, and gaining a realistic perspective of individual situations will be encouraged.

Participants will define their own group's goals, but Lynn Kingsbury, a professional therapist, will be on hand to offer guidance. She said women will gain emotional support, realistic feedback, referral sources and concrete information by participating in the group.

psychotherapist in Lee M. Schulman Clinic, volunteers her services.

"Women need to have a forum to continue to raise their consciousness through self-expression," she said. "I feel strongly about working with women, and by donating my services I can give some real support to the WomenCenter's activities."

Her professional background includes a master's degree in social work from Wayne State University, four years of additional training in analytic psychology and experience in teaching in an alternative educational system.

She is currently teaching "Body Works for Women" through the WomenCenter's non-credit short courses offered on the campus. The class focuses on massage and relaxation techniques for physical stress management.

In the past year, the campus WomenCenter has reached more than 2,000 women from the campus and community through its counseling and referral services, lectures, workshops and non-credit classes.

Ms. Kingsbury will take inquiries about the new group at 541-2660.

MS. KINGSBURY, who works as a

LOSE WEIGHT

I cannot begin to thank you enough for the effect your weight loss program has made on my life. In the past I have tried many fad and chemical reaction diets. At one point I even had my ears stapled! I then made an investment in Health Farm Visits. (this of course was unsuccessful). I developed a system of fasting and binging on food. Therefore, each attempt ended in failure and enormous frustration. For once in my life I have developed proper eating habits and have maintained my 22 pound weight loss with the help of New Development Hypnotherapy Center.



CYNTHIA TANGHETTI

CALL 471-0380
New Development Hypnotherapy Center

LIVONIA PAVILLION EAST
29200 VASSAR • SUITE 413 • LIVONIA



ART IN THE SQUARE

FRIDAY & SATURDAY
JUNE 26 & 27
10 A.M. to 6 P.M.

APPLIGATE SQUARE, Northwestern Hwy.
Between 12 & 13 Miles, Southfield



Ordained

Edward Merkel was one of four seminarians who were ordained clergy of Lutheran Church in America this week. The new pastor and his wife Carol are members of Antioch Lutheran Church in Farmington Hills. They will be leaving the area to serve a parish in Great Bend, Kan. Merkel is a graduate of Wayne State University and Lutheran School of Theology in Chicago.

'Jerusalem Marketplace' planned at Nardin Park

"Jerusalem Marketplace" is the summer education program planned for children in Nardin Park, United Methodist Church, 29087 11 Mile.

The event is open for those who will enter kindergarten in the fall through those who have completed the sixth grade, and will run from 9:30 a.m. to noon Aug. 3-7.

But registrations must be made early. Parents may enroll their children on the morning of Tuesday, June 23, or after church services Sunday, June 28. Children will learn what life was like

when Jesus was a boy by participating in everyday family rituals and activities that took place almost 2,000 years ago.

The youth will visit a synagogue. There will be crafts to do and displays to see in the marketplace. These will include pottery making, spinning, weaving, basket making and bread baking.

There will be animals to visit, folk dancing to learn and storytellers.

Fee is \$2.50 for a child, or a maximum of \$5 for sisters and brothers in one family.

WOMEN'S CENTER FOR HEALTH CARE

Announces the opening of their new office

GENERAL HEALTH CARE for WOMEN
OBSTETRICS, GYNECOLOGY AND
INFERTILITY TESTING

27549 W. Six Mile Rd.
Livonia
261-3430

Adele Simpson

FALL COLLECTION SHOW

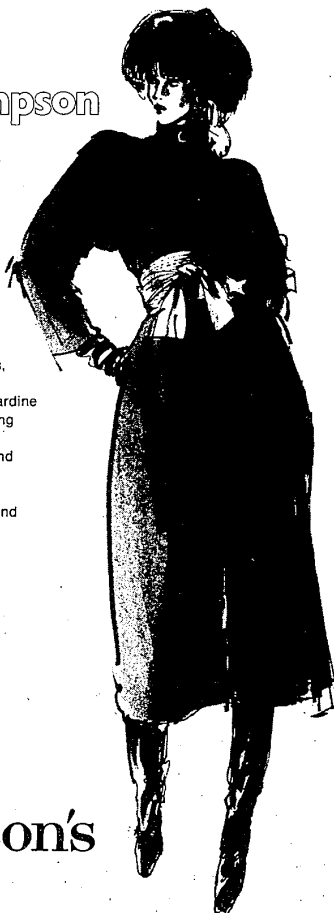
Tuesday, June 23
10 a.m. to 5:30 p.m.

The new design trend continues in this superb collection of dresses, suits and coats. Dresses for day are shown in silks, gabardine or sheer wool and for evening there are dramatic cocktail dresses, evening pajamas and elegant longs. Suits display innovative combinations of checks and plaids. Pewter and bronze metallics accent the subtle colors of grey, rust, burgundy, deep green and brown. Sizes 4 to 16.

Our next
Collection Show:
Gloria Sachs
Friday, June 26

Jacobson's

BIRMINGHAM



Westland GARDEN CENTER AND NURSERY
20% OFF
• Potted Shade Trees
• Roses
32593 Cherry Hill • Westland
(Between Midland & Ypsilanti)
Mon.-Sat. 9-7 Sun. 9-5 721-6610

WASHER DRYER DISHWASHER
ONE DAY SERVICE

25th Anniversary Special
\$500 OFF

Home Service Call
Just Mention This Ad
One Year Parts Warranty

SENIOR CITIZEN DISCOUNT
537-2828

27849 W. 7 Mile • Livonia
WAYNE APPLIANCE SERVICE



The Grandee STEAK HOUSE
24480 GRAND RIVER
(4 Blocks West Of Telegraph)
534-0200

50% OFF

We invite you to enjoy a **50% Discount on One Dinner** when a Second Dinner of equal or greater value is purchased.

This offer excludes Alcohol Drinks, Beverages or Desserts. (One coupon per couple)

Invitation is offered Sunday thru Thursday beginning at 4:00 P.M.

Invitation Expires July 30, 1981

Ad must be presented for offer to be valid

We offer an extraordinary menu

Specializing in Choice Steaks, Prime Rib and Seafood

Dinners Range from \$6.95 to \$14.95 and our dinners include Homemade Soup, Relish

Tray, Hot Rolls & Garlic Toast, Vegetable of the day, Salad with Choice of Dressing

(Blue Cheese or Italian) Baked Potato or Fries, Cocktails, Liqueurs & Spirits

Open 7 Days a week and Serving Lunches Daily Entertainment Friday & Saturday

It's America's Revolutionary Method of Sewing . . .

THE ANN PERSON™ METHOD

8 WEEKS — Regularly \$20.00 New Students. \$12.00 Refresher

Now For A Limited Time It's Our

"2 for 1" Bring A Friend Special

Now for a limited time, all registrations for the Ann Person Method Classes will be available "2 for 1" 2 people can sign up for any scheduled Ann Person Method class for just \$20.00 2 Refreshers for just \$12.00

DO SIGN UP NOW! NOW! NOW!

After 8 easy lessons, you'll have made an entire wardrobe . . . in half the time of ordinary sewing!

Class Starting Time & Date

Wednesday, July 1, 7:00 p.m. Thursday, July 16, 7:00 p.m.
Friday, July 10, 9:30 a.m. Thursday, June 25, 9:30 a.m.

Tuesday, July 28, 9:30 a.m.

For Information About Ann Person and other classes
Phone 477-8777

The Cut-Ups are at it again. June 8-13. Come get a delightful top or dress . . . cut specially for you.



Ann Person
The First Lady of Home Sewing

STRETCH & SEW
Fabrics' Center

38503 W. 10 Mile Rd.
Farmington Hills, 477-8777