

Begin aide will address State of Israel dinner

Yehuda Avner, adviser to Prime Minister Menachem Begin of Israel, speak at the Adat Shalom - Synagogue's Tribute dinner in behalf of State of Israel Bonds.

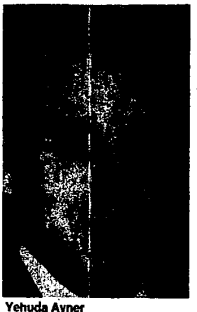
The event will be 6:30 p.m. Thursday, May 20 at the synagogue. Norman I. Leemon of Farmington Hills, dinner honoree, will be the recipient of the State of Israel's "Lim of Judah Award," in recognition of his service to Israel's cause.

Avner, who is a former information chief of the Prime Minister's Office, previously served as counselor of the embassy of Israel in Washington, D.C. and consul of Israel in New York.

A veteran journalist, Avner received his training in England and Israel, specializing in political affairs.

In Jerusalem, he was director of political publications in the Ministry for Foreign Affairs and prior to that, English secretary to the late Levi Eshkol, Prime Minister of Israel. He formerly served as advisor to Prime Minister Rabin.

Dinner co-chairmen are Norman Allan, Dr. Milton Shiffman, Sol Moss and Pat Eichenborn. For dinner reservations call Adat Shalom, 851-5100 or Israel Bonds, 557-3980.



Yehuda Avner

Franchises on increase

Continued from Page 3A

existing franchise or competitor.

Chalk up one more advantage. With a franchise, "they do all that market research for you," Nagle said. An individual would have to do it himself, he said.

FOR DELMOTTE, the choice between owning a private business or owning a franchise is clearly made.

With a franchise, he said, "you have experience and you have support. You

have a tested market." In the end, he said, "it's a well-tested system."

And though it's not guaranteed, "it's almost guaranteed a success."

An almost assured success it might be, but an escape from work it's not.

"Any business — franchise or not — is a lot of hard work and long hours," Delmotte said. His store is open 52 hours a week. "But this doesn't count the time after hours," he said, like the Saturday nights, the weekends, the

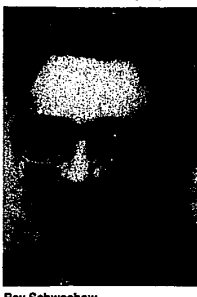
Schwochow is promoted

Roy J. Schwchow, of Farmington Hills, has been appointed to the board of directors of Woodworth Co., Detroit. Schwchow will also continue to serve in the capacity as secretary-treasurer of the company.

Schwchow joined the company in 1969. He is a certified public accountant and prior to his affiliation with the Woodworth Co. was assistant to the president of Hardware Spring Corp. He is a member of both the Michigan Association and American Institute of Certified Public Accountants, and the National Association of Accountants.

He is a graduate of Michigan State University with a B.A. degree in Business Administration.

N.A. Woodworth Co. is a major manufacturer of chucks, inspection equipment and other workholding devices.



Roy Schwchow

ymca highlights

The Farmington Area YMCA provides a variety of services for youth and adults in the community. Further information may be obtained by calling 553-4020 between 9 a.m. and 10:30 p.m. daily.

WOMEN'S GOLF LEAGUE—Any women interested in playing golf on Friday mornings in a league should contact Becky Martinez at 553-4020. Nine holes of golf will be played at San Marino starting at 9 a.m. each Friday.

LOOKING FOR A DONATION—The YMCA is looking for a donation of a refrigerator for the summer day camp program. If you are interested, contact Kevin, 553-4020.

LATCHKEY FORUM—The YMCA will host an open discussion about before school and afterschool child care on Tuesday, May 11 at 7:30 p.m. in O.E. Dunckel cafeteria. Dr. Elliott Burns of Southfield Community Education will be guest speaker. The YMCA and Farmington Youth Assistance will be sponsoring a Latchkey Program in the Farmington area this fall. If you have questions attend this meeting.

DO YOU HAVE A BAD BACK?—The YMCA teaches a medically approved back-relief program to people who are suffering from lower back pain. This class teaches stretching, relaxation and strengthening. Classes begin the week of May 10 in the morning or evening.

FREE BLOOD PRESSURE

SCREENING—May is National Blood Pressure Month. The YMCA will be doing free blood pressure checks May 19 between 7:30 a.m. and 9:30 a.m. and 6 p.m. and 7:30 p.m.

BACKYARD POOLS WANTED—If you would like to have a summer swim program taught in your own backyard, call Becky Martinez, 553-4020.

DOG TATTO IDENTIFICATION—Have your dog permanently marked for identification by a tattoo specialist. This painless method costs \$20 and will be held at the Y on Saturday, May 15 between 9 a.m. and 1 p.m.

Farmington Observer

(USPS 187-840)

Published every Monday and Thursday by Observer & Economic Newspaper, 32351 Schoolcraft, Livonia, MI 48150. Second-class postage paid at Livonia, MI 48150. Address all mail (subscription, change of address, form 3585) to P.O. Box 2428, Livonia, MI 48151. Telephone 551-0500

HOME DELIVERY SERVICE

Newstand per copy, 25c

Carrier monthly, \$1.50

An advertising published in the Farmington Observer is subject to the conditions stated in the applicable rate card. Copies of which are available from the advertising department, Farmington Observer, 23352 Farmington Rd., Farmington, MI (313) 477-5450. The Farmington Observer reserves the right not to accept an advertiser's order. Observer & Economic ad-takers have no authority to bind this newspaper, and only publication of an advertisement shall constitute final acceptance of the advertiser's order.

DAVIDS Office Supply & Furniture Company

SPRING PARKING LOT SALE

This Thurs., Fri. & Sat. - May 13, 14 & 15

SAVE 25-60% ON...

Desks, Filing Equipment, Office Chairs, Wall Hangings, Desk Accessories, Modular Office Systems, Computer Furniture.

SALE HOURS: 8:30-6:30

Cash & Carry

Delivery Extra Charge

DAVIDS

22310 Telegraph • Southfield, MI 48074-6100

"WHERE SERVICE AND PRICE ARE TWICE AS NICE"

INTRODUCING

DeWALT'S NEW 10" POWER MITRE BOX

INTRODUCTORY OFFER

\$219.95

CASH & CARRY

Store Hours: Mon.-Fri. 7:30-5:00, Sat. 8-4:30

H.A. SMITH

28575 GRAND RIVER (near 8 Mile) 474-6610 or 535-8440

Auto Care

Auto Care Centers

Specializing in

- DOMESTIC & FOREIGN CARS
- ENGINE OVERHAUL
- BRAKES
- TUNE-UPS
- AIR CONDITIONING

THIS WEEK'S SPECIAL:

- OIL CHANGE (10W40)
- LUBE
- FILTER

\$12.95

WITH THIS AD

JERRY'S 12 & HALSTEAD SHELL 553-3168

DARRELL'S 12 & ORCHARD SHELL 553-2622

FAMILY DENTISTRY

Dr. Jesse Grimm

- Post Instructor U of M, U of D Dental School
- Maintains Continuing Education
- Serving the community over 13 years
- Location
- Member ADA, NDA
- Affordable dentistry

349-7560

1055 Novi Rd.

The Robert L. LUSSENDEN Co.

It's Spring!

The perfect time to remodel your kitchen or bathroom. Custom work is what we do best.

Call

626-1808

669-2020

TENTS

THERE'S A LOT GOING ON IN

Observer & Economic classified ads

NOTICE OF PUBLIC HEARING ON INCREASING PROPERTY TAXES

Since the Farmington Public Schools has authority to establish the number of mills to be levied from within its authorized millage rate, and since the Truth in Taxation Act, as signed into law on February 9, 1982, mandates that a Public Hearing be held on any proposed additional millage rate, the Farmington Public Schools will hold a Public Hearing on Tuesday, May 18, 1982, 8:30 p.m., at the Administration Building, 32500 Shiawassee Street, Farmington, Michigan.

Thus, the Board will have an opportunity to receive testimony and discuss the levy of the proposed additional millage rate for the ensuing fiscal year.

Presently, the Farmington Board of Education is authorized to levy 37.29 mills for operating purposes, plus an amount needed to cover bonded indebtedness (Debt Millage). The amounts of millage actually levied during the past several years are listed:

	Operation Millage	Debt Millage	Total Millage
1977-78	35.88	3.8	39.68
1978-79	35.88	3.8	39.68
1979-80	36.28	3.4	39.68
1980-81	33.53	2.75	36.28
1981-82	33.25	2.0	35.25
1982-83	32.67	2.0	34.67

Since, according to the new law, the amount of taxes which may be levied for operational purposes is limited to an amount which would generate the property tax revenues for the previous year, and since this amount would create a shortfall of approximately \$1,715,582 for the 1982-83 budget, the Board has proposed, by resolution at the April 27, 1982 Board meeting, to increase the millage levy for the 1982-83 year by one (1) mill. This proposed additional millage rate will increase our estimated revenues for operating purposes by 4%. The public should note that the maximum voted millage for operating purposes is authorized to be 37.29. The recommendation that the levy for 1982-83 by 32.67, represents, in effect, a decrease by .58 mill from the levy of 1981-82, and 4.62 mills less than the millage authorized by the community.

The Board of Education has proposed this millage in recognition of the responsibility to maintain and sustain an effective educational program for the community.

Publish: May 10, 1982

Stewart-Glen BEATS INFLATION

With A Factory Authorized

PENNSYLVANIA HOUSE TRUCKLOAD SALE

35% OFF SELECTED ITEMS

Due to business conditions in the past several months, Pennsylvania House has experienced a factory overrun on many excellent items from their regular line.

At this time, an extensive number of selected cherry and oak pieces will be on sale at 35% OFF regular prices. This type of factory clearance sale may never happen again.

Come in and see which pieces are included in the truckload of three different dining room groups, three bedroom groups and 20 assorted occasional pieces.

Many other pieces from our floor, including upholstery, will also be marked at clearance prices.

But hurry, quantities are limited and the **TRUCKLOAD SALE ends on SATURDAY - MAY 29th.**

ALL CLEARANCE AND TRUCKLOAD SALES ARE FINAL... NO HOLD ORDERS... NO CHARGE FOR DELIVERY

Pick up your FREE, BRAND NEW and exciting Pennsylvania House Collector's Book... 248 full color pages... A \$10 value!

Ask our Interior Designers to help you with your Decorating Problems

Use our 4-Play Plan (see insert) or use your VISA or MasterCard

STEWART-GLENN CO. "YOUR FURNITURE STORE" No charge for delivery • Cash/ins. & Sat. day • Curbside delivery service • Generous in-store parking