

Auto Show 'revs up' Saturday

Continued from Page 3

CADILLAC — Visitors to the Cadillac exhibit will be treated to a display of the company's Bose quadruphonic stereo system in a specially constructed Delco Bose Theatre. The room is designed to conform to the exact specifications of the dynamic sound system, Cadillac says. "It is like no other car sound system available."

Also on tap to entertain and inform visitors will be a 10-minute stage show highlighting the company's 80-year history using audio-visual materials, narration, singing and dancing. Cadillac cars include the Coupe de Ville, the Sedan de Ville, the Fleetwood Brougham Coupe, the Fleetwood Brougham Sedan, the Eldorado Coupe, the Seville Sedan and the Cimarron Sedan.

CHEVROLET — Chevrolet will be showing more than half a million dollars worth of vehicles in the 1983 Detroit Auto Show. A standout in the Chevy exhibit will be the Monte Carlo SS, the first Chevy convertible since 1975. It features a new, wind-tunnel-tuned shape and a power train that includes the most powerful, carburetor V-8 engine available in a 1983 Chevrolet passenger car. Chevy also will entertain with a robot and a magician, aerobic dancers and a computer to answer questions about Chevy's 6.2-liter engine.

CHEVROLET TRUCKS — Included in Chevy's 1983 line of trucks will be the Compact S-10 Blazer, the S-10 Maxi-Cab, pickups of ½-ton, ¾-ton, and one-ton, Blazers and Suburbans, Suburban, Chassis Cab and Blazer, Bonus and Crew Cab models, G-20 and G-30 Chevy Vans and Sportvans, a motor home chassis, hi-cube and step vans, the El Camino pickup, school and bus chassis and medium-duty conventional cabs.

CHRYSLER-PLYMOUTH — Being shown to the public for the first time at the Chrysler-Plymouth exhibit will be the Chrysler G-24, a fuel-injected, turbocharged 2nd scheduled for production in 1984. Also shown will be a concept car, a Chrysler, two-place, turbocharged roadster.

Three new 1983-½ models in the show will be a front-wheel-drive Chrysler New Yorker, the company's four-door, luxury flagship; a Chrysler Town & Country convertible popularly called a "Woody" because of its simu-

lated white ash treatment on the body exterior; a Chrysler executive sedan which is a stretched LeBaron; and a limousine version of the LeBaron on a 131-inch wheelbase. Chrysler Plymouth Imports will include the Plymouth Sapporo Technica and the Colt GT5 with twin-stick manual transmissions.

DODGE — Four new specialty cars are being highlighted in the Dodge exhibit. Included are the as-yet-named G-24 sports car, a new Dodge Shelby Charger to be introduced as a 1983½ model in February, a Dodge 400 convertible with a rumble seat and a new, special RS version of the Dodge Colt.

FORD — Ford is featuring all-new vehicles which include the dramatically designed, high-technology Thunderbird, the aerodynamic, restyled LTD and the Mustang Convertible. Ford is calling its lineup "part of the largest array of new vehicles launched by Ford Motor in its 80-year history."

Another feature of the Ford exhibit will be a \$50,000 custom-built Bronco owned by rock singer Ted Nugent. And Ford says that its front-wheel-drive Escort — America's best-selling car, foreign or domestic, in 1982 — has undergone significant improvements.

FORD TRUCK — Ford trucks entered in the show include the Ranger compact pickup line which is now available with a new diesel engine, 4WD and a new five-speed manual transmission. The diesel carries an EPA mileage rating of 41 on the highway and 33 in the city. Ford's F-Series pickups also are available with a new heavy-duty diesel engine in either the F-250 or F-350 models.

GMC TRUCKS — The GMC Truck display will feature E.T., the extraterrestrial visitor from outer space, with a troupe of dancer-narrators, all calling attention to the S-15 Club Coupe and the S-15 Coupe. Also being displayed will be a heavy-duty Aero Astro Tractor, an S-15 Jimmy and an upfitted van being offered for the first time with a 6.1 diesel engine. Emphasis also will be placed on a standard pickup, a suburban and a rally van, all featuring the 6.2 diesel.

HONDA — Honda is showing its Civic 1300 FE Hatchback with special pride because the car has earned the

No. 1 spot atop the EPA's gasoline economy charts. It has an estimated rating of 59 mpg on the highway and 48 in the city. Pacing the Honda Civic line this year is the new S model. S stands for Sport. The model is distinguished by matte-black window trim and red-accented black bumpers and body side moldings. Also being shown will be the Accord four-door sedan.

ISUZU — Boasting that Isuzu, in two years, has become the fastest-selling new import name in American history, the Japanese maker will be showing its P'UP pickups. Isuzu is offering a larger and more powerful gasoline engine for its P'UP pickups.

LINCOLN-MERCURY — Featured will be a new-sized and especially smooth-riding Marquis; an aerodynamically designed, formal roof-line Cougar; a sporty Capri RS with bubble back design and powerhouse V-8 engine; and a performance-oriented Lynx RS with electronic fuel injection and five-speed manual transaxle.

Also on display will be their 1983 Continental concept vehicle called CommCar, in which visitors to the show will be invited to phone anywhere in the world via INTELSAT V, a communications satellite orbiting the earth over the Atlantic Ocean.

MAZDA — The Mazda 626 will be the headliner of the Mazda display. The 626 is all-new from the ground up, including a new engine, a patented new suspension system and is billed as "an international mid-size automobile." Other Mazda show entries include the GLC line of sporty economy cars, the rotary engine RX-7 sports car, the B2000 Sundowner and the B2200 Diesel pickup trucks.

NISSAN — Will be showing off its newly introduced 1983 Nissan Pulsar NX, five-passenger small car offering the efficiency and function of a front-wheel-drive sedan but with a sports-car flavor.

OLDSMOBILE — Six specialty cars will be featured in the Oldsmobile exhibit. They include a high-performance Hurst Olds, a Cutlass Ciera Husky, a Cutlass Ciera Holiday coupe and an Omega ES sedan. Olds turntables also will contain a Cutlass Supreme Special Edition and a 98 Regency Brougham.

David Hasselhoff, star of the NBC-TV series "Knight Rider," will appear Jan. 15-16 in the Pontiac exhibit.



PEUGEOT — Starring in the Peugeot exhibit will be a 504 diesel wagon; a 604 Turbodiesel, the maker's limited edition luxury model; a 505 Turbodiesel sedan; and a 505 F.I. (fuel injection) gasoline-engine sedan. The wagon has a capacity of 1,285 pounds, the greatest of any imported wagon. Peugeot says the wagon combines the load capacity of a pickup truck with the economy of a small car.

PONTIAC — Pontiac will be featuring its world-class performance 6000 STE, its sport Firebird with a new, five-speed manual transmission and its 2000, a car with fuel economy of more than 60 mpg.

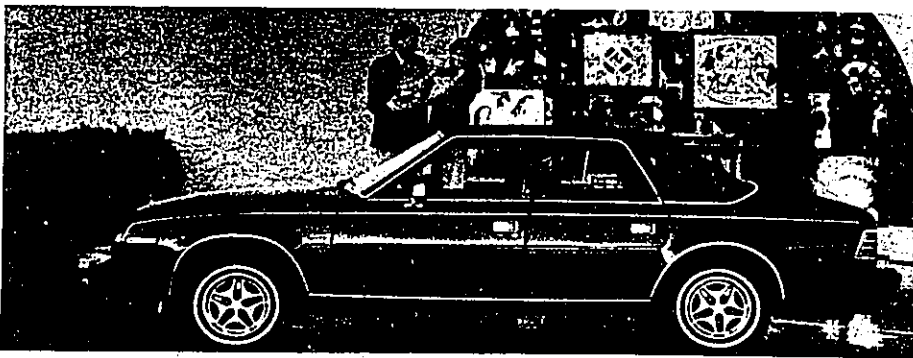
Also in the Pontiac display will be Richard Petty's No. 43 Grand Prix NASCAR racing car. Natalie Carroll, being billed as the Firebird Girl, will make personal appearances. And David Hasselhoff, star of the NBC-TV adventure series "Knight Rider," will be appearing on Saturday and Sunday, Jan. 15-16.

SAAB — The Swedish automaker is claiming another industry first with its 1983 models — asbestos-free brakes. They provide longer brake life and lessen the amount of cancer-causing asbestos fibers in the air.

TOYOTA — This firm will be featuring the all-new Tercel 4WD Wagon, the Celica Supra and its line of small trucks. The new Tercel lineup includes three-door and five-door liftback models. The Tercel liftbacks have new aerodynamic sleekness which cuts wind drag by 14 percent and provides highway mileage ratings of up to 50 mpg and 39 mpg in the city. Also featured will be the Starlet, Toyota's mileage leader with a new fuel-injected engine giving up to 54 on the highway and 44 in the city.

VOLKSWAGEN — The hot new performance car of 1983, the Volkswagen Rabbit GTI, headlines the Volkswagen of America exhibit. The Volkswagen display features a live, 15-minute demonstration of VW engineering features and their capabilities: front-wheel-drive; overhead-camshaft engines; fuel injection; four-wheel, independent suspension; dual-diagonal brakes; negative-roll steering radius and diesel and turbo diesel engines. The complete line of VW vehicles — Rabbit, Jetta, VW Pickup, Scirocco, Rabbit Convertible, Quantum and Vanagon — will be on display.

The Porsche 911SC Cabriolet and 928S are the "new for 1983" cars in the Porsche Audi lineup. The 911SC Cabriolet is a soft-top version of the sports car and makes the 928S the fastest production car sold in America. Audi's luxury cars — the 4,000, the Coupe, 5,000 Turbo Diesel, 5,000, 5,000 Turbo and Quattro — along with the Porsche 944 also will be displayed.



The AMC Concord DL four-door sedan has a 4.2-liter, six-cylinder engine as standard equipment for 1983.