

## exhibitions

### • ROBERT L. KIDD

A group exhibition featuring work by Lyman Kipp, Harry Bertola, Lowell Neelbit, Lamar Briggs, Chuang Chao and Gary Davilek, and a one-man exhibition of sculptural fiber wallhangings by Robert L. Kidd, will be on display at the Kidd Gallery, 107 Townsend, Birmingham, Friday through Sept. 3. Hours are 11 a.m. to 5:30 p.m. Tuesday through Saturday.

### • AAAA

A series of drawings on paper by artist Mary King will be on display in the Exhibit Gallery of the Ann Arbor Art Association, 117 W. Liberty, starting Friday through Aug. 20. A reception for the artist will be held from 7:30 to 8:30 p.m. Friday. Gallery hours are noon to 5 p.m. Monday, 10 a.m. to 5 p.m. Tuesday through Saturday.

### • HABATAT GALLERIES

Architectural sculptures in glass by David Huchthausen will be on display at the Habatat Galleries, 28235 Southfield Road, Lathrup Village, through Sept. 3. Summer hours are 10 a.m. to 6 p.m. Wednesday, Thursday and Saturday, 10 a.m. to 5 p.m. Friday.

### • CAROL HOOBERMAN

Selected works by gallery artists in ceramics, glass, wood, handmade paper, paintings and hand-crafted jewelry will be on display throughout August at the Carol Hooberman Gallery, 155 S. Bates, Birmingham. Hours are 10:30 a.m. to 5 p.m. Tuesday through Saturday, 10:30 a.m. to 2 p.m. Saturday and by appointment. The gallery is closed until Monday.

### • GALLERY JARMAIN

The Gallery Jarmain, 33 Hazelton in Toronto, Ontario, will exhibit micrographs on handmade cotton paper by Rafaele Tamayo, Luis Camilo, Enrique Climent, Pedro Frickberg, Mathias Goeritz, Carlos Merida, Teodoro Romo and Fernando de Szyszlo during normal business hours throughout August.

### • DONNA JACOBS

"America Before Columbus" continues at the Donna Jacobs Gallery, 574 N. Woodward, Birmingham, through Aug. 31. The exhibit features selected archaeological works from South America, Central America and Mexico. Hours are 11 a.m. to 5:30 p.m. Tuesday through Saturday.

### • XOCCHIPILLI

A drawing exhibition featuring new work by Stephen Goodfellow, Maggie Citrin, Mary King, Elissa Glasgold, Patricia Soderberg and Robert Jacobson continues through Aug. 20 at the Xochipilli Gallery, 558 N. Woodward, Birmingham.

### • ANTIQUE SHOW

An antique show featuring restoration of copper, brass, furniture, phonographs, chipped glass and crystal repair, lamp repair and demonstrations on furniture stripping, chair caning, rushing and weaving will run 10 a.m. to 9 p.m. Thursday through Saturday and noon to 5 p.m. Sunday at the Oakland Mall, 1-75 and 14 Mile in Troy.

### • TROY GALLERY

Wednesday, Aug. 3 — "Landscapes Around the World" features works by Fanch, Susan Gold, Hiroshige, Lebadang, Romley and Shurr. Continues through Sept. 17. Hours are 11 a.m. to 5:30 p.m. Tuesday-Saturday. Closed Saturdays during August, 755 West Big Beaver, Top of Troy concourse, Troy.

### • RUBINER GALLERY

A familiar gallery has a new address. The new location is 7001 Orchard Lake Road, Suite 450A, West Bloomfield. Works by regular gallery artists will be on display through August. Summer hours are 10 a.m. to 5:30 p.m. Tuesday-Saturday.

### • HILL GALLERY

Black American folk art of Elijah Pierce, Joseph Farmer, Bill Traylor, Inez Nathaniel-Walker and Joseph Yoakum, along with anonymous folk sculpture and selected African sculpture, will be on display at

### • HILL GALLERY, 183 Townsend, Birmingham, through the end of the month. Gallery hours are 12:30-5:30 p.m. Tuesday-Saturday.

### • PARK WEST GALLERIES

Works on paper by Frank Stella, bronze sculptures by Eric Landscapes by American printmakers Harold Altman, Arnold Alanis and Robert Kipnis, paintings, sculptures and drawings by Israeli artist Yaacov Agam, as well as works by Picasso, Miro, Chagall, Goya, Laurence and Renoir are on display at Park West Galleries, 19469 Northwestern Highway, Southfield, through Sept. 9. Hours are 10 a.m. to 6 p.m. Mondays, Wednesdays, 10 a.m. to 9 p.m. Thursdays and Fridays, 10 a.m. to 5 p.m. Saturdays-Sundays.

### • PAINT CREEK CENTER

A Rembrandt etching, engraving and dry point, and two pieces by James A. Whistler will be on view at the Paint Creek Center for the Arts, 407 Elm Rochester, Mount Pleasant, through Aug. 13. Also on exhibit will be the clay works of Lee Paradise. Hours are 10 a.m. to 5 p.m. Monday-Friday.

### • CADE GALLERY

A nine-person summer glass exhibit with Richard Birkhill, Maxwell Davis, Richard Findora, Brendan Keenan, Marlene Keller, Sean O'Meara, Richard Ruff, Sandra Schenck and Karen Sepanski continues through Aug. 1 at the gallery, 8025 Agnes in Detroit. Gallery hours are noon to 7 p.m. Wednesday-Sunday.

### • PRINT GALLERY

An exhibit of billboard posters from Europe opens Saturday and runs through August at the Print Gallery, 29203 Northwestern, in the Franklin Shopping Plaza in Southfield. Hours are Monday, Tuesday, Wednesday, Friday and Saturday 10 a.m. to 6 p.m., and Thursday 10 a.m. to 9 p.m. The billboards measuring 47 by 63 feet, originally were placed on the streets of France to announce the exhibits of such artists as Renoir, Monet, Matisse and Picasso.

### • ALLEY ARTS & ANTIQUES

Art in a variety of media by Barry Swarmedt is on display through July. Hours are 10 a.m. to 5:30 p.m. Tuesday-Saturday, 32870 Franklin Road, Franklin.

### • FEIGENSON GALLERY

Works by five American folk artists will be displayed through Aug. 3. They are William Dawson, Elijah Pierce, Mose Tolliver, Inez-Nathaniel-Walker and Joseph Yoakum. All are in the "Black Folk Art" exhibition running concurrently at Detroit Institute of Arts. Hours are 11 a.m. to 5 p.m. Tuesday-Saturday, but closed Saturdays in August, 310 Fisher Building, Detroit.

### • JEWISH COMMUNITY CENTER

Sculpture in stone and bronze and paintings by Leonard Schwartz will be on display in the main building, 6600 W. Maple, West Bloomfield, through July. This 25-year retrospective is open to the public during regular business hours.

### • MULLALLY MATISSE GALLERIES

Boats, lakes and meadows by gallery artists, as well as African crafts, are on display through July. Hours are 11 a.m. to 4 p.m. Tuesday-Saturday, 1025 Haynes, Birmingham.

### • CANTOR/LEMBERG GALLERY

Prints by Frank Stella, includes works from 1974 culminating with a series, "Shards," done last year. Hours are 11 a.m. to 5:30 p.m. Tuesday-Saturday, 538 N. Woodward, Birmingham.

### • COUNTY GALLERIA

"Art in Photography," an exhibit by Kalvin Engelberg of Farmington, will continue in the Executive Office Building through July during regular business hours. Although he has won a number of awards, this is his first one-man show, 1300 N. Telegraph, Pontiac.

### • ART EXCHANGE

"My Way in Clay" is the title of a pottery show by Irene MacDonald that continues through the month. Hours are 10:30 a.m. to 5:30 p.m. Monday-Satur

## Think like a poet

Did you know there is a very powerful and meaningful language spoken by everyone, young and old, rich and poor, from all parts of the world? What I'm referring to is the language of the photographic image.

And just as a knowledge of basics is essential to communication and understanding in any language, so is this true in photography. For example, we all know about grammar in the English language.

We know where the period and comma belong. Similarly, in our photography, we should all know the basics, such as how to set the shutter speed and how to correctly set the aperture.

But as creative photographers, we have to go a step beyond this. In short, we must learn to become poets without cameras. You see, a poet makes grammar a secondary thing. What is primary to him are the words flowing from his creative self.

The poet is tuned into his feelings and he desires to express these feelings through his words. His poems are written expressions of himself.

A photographer must strive to do this, too. We must make the mechanics of photography a secondary thing and concentrate on becoming photographic poets.

It's easy to get correct exposure with our cameras. Now let's work toward getting proper exposure with out photographic feelings.



photos

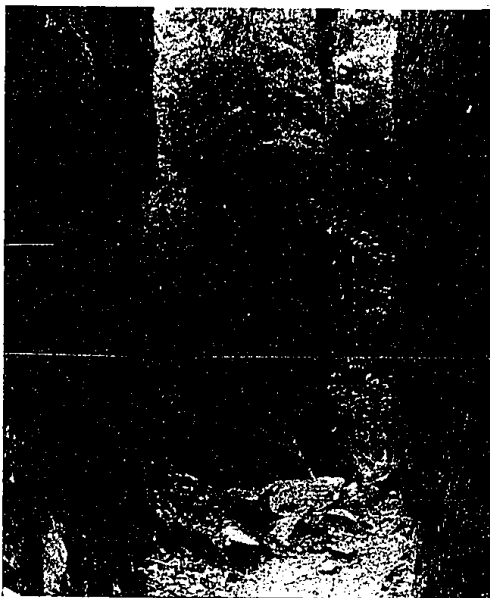
Monte Nagler

REMEMBER THAT as photographers, we have the ability to make visible what others can only sense. This is an exciting concept. Begin to think of your feelings as the true lens of the camera. Realize that a photographer, can reach out and stir human emotions that often go beyond what the spoken or written word can do.

Learn never to underexpose your feelings. Remember that it's not the brush of the artist that produces the painting, nor the bow of the violinist that makes the melody, nor the pen of the poet that writes the sonnet. Similarly, it's not the camera that produces the photograph — it's really you.

Put your inside lens to work for you and become a poet of the photographic language.

This scene struck Monte Nagler as one of contrasts. The tranquil trees contrast against the hard granite.



**PRICED BELOW MARKET!** Prestigious Woodcreek Hills presents executive Colonial on heavily wooded lot with stream. Central air, 2 fireplaces, marble foyer. Finished rec room, heated pool and dock. Assumption! 628-9100. \$189,900.



**MINT CONDITION** highlights family Colonial filled with custom features. Family room with full wall fireplace, 4 bedrooms, rec room with bar. VA-HA. 628-9100, \$104,900.



**ON GOLF COURSE!** Neutral decor accents spacious 4 bedroom Farmington Hills Colonial. Excellent storage, walk out rec room, inviting screened porch. Treed lot! 628-9100, \$134,900.



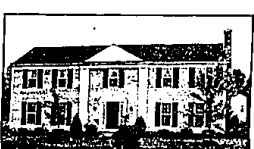
**WESTBROOK MANOR SUB** offers nicely maintained 3 bedroom. Central air, screened porch, private treed yard. Farmington schools. Good value! 628-9100, \$71,900.



**CHARM IN HISTORIC FARMINGTON!** Beautifully updated Colonial with 9' ceilings, oak floors, new microwave kitchen. Immediate possession! 851-8100, \$79,900.



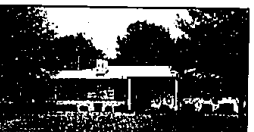
**MINI-RANCH** on almost 5 acres! Custom built Ranch on picturesque treed setting includes horse barn. Bay windowed living room, zoned heat, two fireplaces. West Bloomfield schools. 628-9100, \$214,900.



**PRICED BELOW COMPETITION!** Expansive Colonial features 4 bedrooms (huge master suite), neutral decor, Farmington schools. Simple Assumption! 628-9100, \$108,900.



**ASSUME 11% MORTGAGE!** Earth tone decor is featured with Farmington Hills Condominium, bordering treed lot for privacy. Central air, all appliances, patio too. 628-9100, \$85,900.



**IMMACULATE BRICK RANCH**, priced to sell! Includes fireplaced family room, beautifully finished rec room with bar, central air, all on lovely treed setting. 628-9100, \$89,800.



**FOR YOUNG BUYERS!** Excellent value in freshly updated aluminum bungalow in good Royal Oak area. Large room sizes, extra insulation, fenced yard. Immediate Occupancy! 851-8100, \$39,900.



**BEVERLY HILLS** neighborhood finds spacious Colonial with fireplaced family room, rec room with bar, walk to Our Lady Queen of Martyrs. 851-8100, \$104,900.



**RICHLY APPOINTED** Family Colonial offers new decor with grasscloth wall-coverings, earlstone carpet, pegged floors. Gorgeous deck, near swimming club. Terms! 851-8100, \$115,900.



**CUSTOM BUILT** Farmington Hills Ranch on photogenic treed setting. Central air, power humidifier, fireplace, extra storage area, (Barrier free home for wheel chair). 628-9100, \$74,900.



**GREAT BUY** in Farmington Hills! Mint condition, neutral decor highlights open floor plan. Central air, extra insulation. Immediate possession. 628-9100, \$59,900.



**ASSUME LAND CONTRACT!** Nice Oak Park location offers 3 bedroom 1 1/2 story. Newer carpet, added insulation, Barkley schools. 628-9100, \$38,900.

## Carillon duet featured

For the fourth consecutive year, Beverly Buchanan and William DeTurk, carilloneurs at Christ Church Cranbrook and the University of Michigan, respectively, will perform a carillon duet at Christ Church at 4 p.m. Sunday.

The duet program, performed on one carillon with four hands and four feet — is a popular feature of these recitals which have been a Sunday afternoon tradition at the church for 55 years.

Included in the program will be "A Carillon Concerto for Two to Play," composed by University of California carilloneur Ronald Barnes and commissioned by the Mayo Clinic.

Also on the program will be five classical country dances, recently written by Barnes for the Buchanan/DeTurk recital and Buchanan's arrangements of Handel's "Musical Clock Tunes" and Mozart's "Minuet" from the

Symphony No. 39.

Immediately preceding the concert, starting at 3 p.m., there will be tours of Christ Church and following the concert at 5 p.m. there will be guided tours of the 50-bell tower. All events are free, as is parking in the adjacent Christ Church parking lot.

Christ Church Cranbrook, Lone Pine at Cranbrook, Bloomfield Hills, is an Episcopal church noted for its modern Gothic architecture.

Other pieces on the program include Louis's "Evening Bell" a selection of Brahms' waltzes and John Philip Sousa's lively "Stars and Stripes Forever."

Both musicians are active in the local musical community as well as The Guild of Carilloneurs in North America where they have served on the board of directors. They have performed extensively in the United States and Europe.

**Chamberlain**  
REALTORS®

• BIRMINGHAM

646-6000

• BLOOMFIELD HILLS

647-5100

• WEST BLOOMFIELD

851-8100

• FARMINGTON HILLS-

FRANKLIN

626-9100

• TROY

689-8900

• ROCHESTER

851-8850

