

## exhibitions

Continued from Page 2

### ● OAKLAND COUNTY GALLERY

An exhibit of photography, "Genesis 13" by William E. Dwyer continues through the month. His work illustrates his interest in light—reflections, shadows and values. Presented by the Oakland County Cultural Council. The Gallery is on the second floor of the Executive Office Building, 1200 N. Telegraph, Pontiac. Open during regular business hours, Monday-Friday.

### ● COLLECTOR'S ART GALLERY

Original prints by Joan Bracco are on display at the gallery. This artist who was born and educated in California has had a number of shows in Michigan where she now lives and works. Her works at the gallery are limited edition etchings, 411 Walnut, Rochester. For hours, call 853-9015.

### ● ROBERT L. KIDD

A group exhibition featuring work by Lynnan Kipp, Harry Bartola, Lowell Nesbitt, Lamar Briggs, Chung Che and Gary David, and a co-curatorial exhibition of sculptural fiber wallhangings by Robert L. Kidd, will be on display at the Kidd Gallery, 107 Townsend, Birmingham, Friday through Sept. 3. Hours are 11 a.m. to 5:30 p.m. Tuesday through Saturday.

### ● AAAA

A series of drawings on paper by artist Mary King will be on display in the Exhibit Gallery of the Ann Arbor Art Association, 117 W. Liberty, starting Friday through Aug. 20. Gallery hours are noon to 5 p.m. Monday, 10 a.m. to 5 p.m. Tuesday through Saturday.

### ● HABATAT GALLERIES

Architectural sculptures in glass by David Huchthausen will be on display at the Habatat Galleries, 28235 Southfield Road, Lathrup Village, through Sept. 3. Summer hours are 10 a.m. to 6 p.m. Wednesday, Thursday and Saturday, 10 a.m. to 9 p.m. Friday.

### ● CAROL HOBERMAN

Selected works by gallery artists in ceramics, glass, wood, handmade paper, paintings and hand-crafted jewelry

will be on display throughout August at the Carol Hoberman Gallery, 155 S. Bates, Birmingham. Hours are 10:30 a.m. to 5 p.m. Tuesday through Saturday, 10:30 a.m. to 2 p.m. Saturday and by appointment. The gallery is closed until Monday.

### ● DONNA JACOBS

"America Before Columbus" continues at the Donna Jacobs Gallery, 574 N. Woodward, Birmingham, through Aug. 31. The exhibit features selected archaeological works from South America, Central America and Mexico. Hours are 11 a.m. to 5:30 p.m. Tuesday through Saturday.

### ● KOCHIPPILLI

A drawing exhibition featuring new work by Stephen Goodfellow, Maggie Citrin, Mary King, Elissa Glassgold, Patricia Soderberg and Robert Jacobson continues through Aug. 20 at the gallery, 568 N. Woodward, Birmingham.

### ● TROY GALLERY

Wednesday, Aug. 3—"Landscapes Around the World" features works by Fanchi, Susan Gold, Hirsching, Lebedang, Romley and Shurr. Continues through Sept. 17. Hours are 11 a.m. to 5:30 p.m. Tuesday-Saturday. Closed Saturdays during August, 755 West Big Beaver, Troy. Troy concourse, Troy.

### ● RUBINER GALLERY

A familiar Gallery has a new address. The new location is 7001 Orchard Lake Road, Suite 450A, West Bloomfield. Works by regular gallery artists will be on display through August. Summer hours are 10 a.m. to 5:30 p.m. Tuesday-Saturday.

### ● PARK WEST GALLERIES

Works on paper by Frank Stella, bronze sculptures by Eric, landscapes by American printmakers Harold Altman, Arnold Alanx and Robert Kipnis, paintings, sculptures and drawings by Israeli artist Yacov Agam, as well as works by Picasso, Miro, Chagall, Goya, Lautrec and Renoir are on display at Park West Galleries, 29469 Northwestern Highway, Southfield, through Sept. 5. Hours are 10 a.m. to 6 p.m. Mondays-Wednesdays, 10 a.m. to 9

p.m. Thursdays and Fridays, 10 a.m. to 5 p.m. Saturdays-Sundays.

### ● PAINT CREEK CENTER

A Rembrandt etching, engraving and dry point, and two pieces by James A. Whistler will be on view at the Pots and Prints exhibit at the Paint Creek Center for the Arts, 407 Pine in Rochester, Monday through Aug. 13. Also on exhibit will be the clay works of Lee Paradise. Hours are 10 a.m. to 5 p.m. Monday-Friday.

### ● PRINT GALLERY

An exhibit of billboard posters from Europe opens Saturday and runs through August at the Print Gallery, 29203 Northwestern, in the Franklin Shopping Plaza in Southfield. Hours are Monday, Tuesday, Wednesday, Friday and Saturday 10 a.m. to 6 p.m., and Thursday 10 a.m. to 9 p.m. The billboards measuring 47 by 63 feet, originally were placed on the streets of France to announce the exhibits of such artists as Renoir, Monet, Matisse and Picasso.

### ● FEIGENSON GALLERY

Works by five American folk artists will be displayed through Sept. 3. They are William Dawson, Elijah Pierce, Mose Tolliver, Iez-Nathaniel-Walker and Joseph Yoakum. All are in the "Black Folk Art" exhibition running concurrently at Detroit Institute of Arts. Hours are 11 a.m. to 5 p.m. Tues-

day-Saturday, but closed Saturdays in August, 310 Fisher Building, Detroit.

### ● CANTOR/LEMBERG GALLERY

Prints by Frank Stella, includes works from 1974 culminating with a series, "Shards," done last year. Hours are 11 a.m. to 5:30 p.m. Tuesday-Saturday, 538 N. Woodward, Birmingham.

### ● UNIVERSITY ARTISTS & CRAFTSMEN GUILD

Recent pastels by U-M graduate Robin Kandel of Bloomfield Hills will continue on exhibit to Monday, Sept. 12. She moved to California to work and teach, so this may be her last show in this area—at least for a while. University Club, First Floor, Michigan Union, Ann Arbor.

### ● SCHWEYER-GALDO GALLERIES

Works by gallery artists Cuevas, Perez, Celis, Bencomo, Estopinan, Schneider and Kozlov are on display. Hours are from 11 a.m. to 5:30 p.m. Monday-Saturday, 330 Hamilton Row, Birmingham.

### ● GALLERY 22

"Four Painters on Canvas" features large abstracts by Nancy Closson, Irene Simon, Denny Foy and Delbert Michel. Hours are from 10 a.m. to 6 p.m. Monday-Friday, until 9 p.m. Thursday and until 5 p.m. Saturday, 22 E. Long Lake, Bloomfield Hills.



One of exhibits which deals with chairs at the Birmingham Bloomfield Art Association is this mixed assemblage by Sue Dilts of Mt. Pleasant. It is titled "Chairperson of the board of a charitable organization chairing a meeting somewhere in California."

## Exhibit is all about chairs

The ordinary chair takes on new artistic dimension in a traveling exhibit which opens at Birmingham Bloomfield Art Association Saturday.

Sponsored by Central Michigan University through its Windows Program, the exhibit attracted works from artists throughout the country working in styles from traditional such as Jean-Louis's etchings of uncoupled wicker chairs to an avant-garde tape of "Talking Chairs," a col-

lection of sounds made as chairs are moved across the floor, done by Guy Bleus.

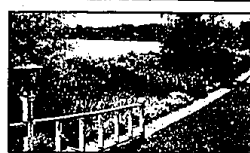
The artists' impressions of the chair appear in sculpture, painting, drawings and graphics.

Birmingham is the fourth stop on the exhibit's tour. It will close here Saturday, Aug. 27, and move on to Escanaba, where it will open for its last run Tuesday, Sept. 6.

Birmingham Bloomfield Art Association, 1516 S. Cranbrook at 14 Mile.



**CUSTOM RANCHI** Beautiful neutral great room with cathedral ceiling and fireplace highlight impeccably maintained home. Central Vacuum, Intercom, fantastic lower level with wet bar, more! 851-8100, \$129,000.



**MIDDLE STRAITS LAKEFRONT** Stately Colonial affords fun-filled lifestyle with year round living. Two-story open floor plan views magnificent lake setting. Sandy beach, extensive decking, central air and quality finish detailing. 4 bedrooms, upper level balcony and finished recreation room. Immediate possession. 851-8100, \$330,000.



**PHOTOGENIC TREED SETTING** forms backdrop to stately 4 bedroom Colonial. Includes fireplace family room, hardwood floors, enclosed porch. 626-9100, \$93,900.



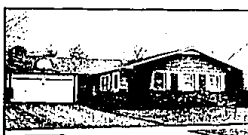
**10 YEAR LAND CONTRACT** with \$35,000 Down at 11%. Circle drive, 2 story foyer, library plus 4 bedrooms, fireplace family room, central air, newly decorated. Backs to park. 626-9100, \$124,900.



**SPECTACULAR LOT** with stream frames excellent Frankel built home featuring four bedrooms, central air, sprinkler system, two fireplaces, heated pool too! 626-9100, \$119,900.



**IDEAL FAMILY HOME!** Majestic trees shade spacious 4 bedroom Colonial in prime Southfield location. Fireplace, first floor laundry. Land Contract Terms. 626-9100, \$77,900.



**FOR THE YOUNG at heart!** Exceptional Troy Ranch features mint condition, neutral decor, cathedral ceiling family room, leveler blinds, basement too! Must see! 689-8900, \$78,500.



**EXCEPTIONAL VALUE!** Beautiful brick bi-level in Southfield offers 3 bedrooms, den, 1 1/2 attached garage. Immediate possession. 647-5100, \$49,900.



**BEAUTIFUL NORTHERN MICHIGAN** setting in the City! Over 3 acres frames custom Ranch on private cul-de-sac. Horses allowed! Near 12 Oaks and expressway! Land Contract! 626-9100, \$109,900.



**11% LAND CONTRACT, 10 years, \$7,000 down!** Great for young buyers! 3 bedrooms, country porch, extra shop or garage! 626-9100, \$27,900.



**FIVE BEDROOMS POSSIBLE** in exceptional brick Ranch at an affordable price! Neutral decor with new carpet, basement, deck too! 648-6000, \$69,900.



**IN EVERGREEN WOODS!** Fantastic interior designer decor highlights delightful Ranch Condominium. 2 bedrooms, central air. Land Contract Assumption, \$5,000 down. 626-9100, \$59,990.



**ROCHESTER SCHOOLS!** Excellent investment potential in 3 bedroom Ranch on 200' x 1087' lot. Fireplace, 2 car garage. Land Contract Terms. 651-8850, \$84,900.



**ACREAGE** Ten acres on Dorn Court, in Addison Township, can be split into three building sites. Recently wooded rolling terrain.



**Ten building sites** from one acre to ten acres in Grand Blanc, possible multiple on all parcels: one 19 acre site zoned multiple.

**RALPH MANUEL ASSOCIATES INC. REALTORS**

**THINKING WE OF BUILDING? HAVE THE LAND!**

Summer is here and now is the time to line up a site for your new home. RMA has lots in various locations, from Birmingham to Rochester, to fill both your dreams and your pocketbook.

### BUILDING SITES WITH VIEWS

- Walden Drive in Bloomfield with magnificent views of Bloomfield Hills schools.
- On Sedgemoor, in Wakeek Subdivision, with expansive views of Bloomfield Township, Bloomfield Hills schools.
- On Bloomcrest - gently rolling site perfect for a walk-out basement located in Bloomfield Hills with Bloomfield Hills schools.

### BUILDING WITH TERMS

- In the Woodlands in Orchard Lake. Prestigious building sites with financing to fit your needs.
- In Chestnut Hills in the City of Bloomfield Hills, wooded building site with ravine in rear and terms designed for a sale.

### BUILDING SITE WITH TREES

- In Bloomfield Hills in Echo Ridge, building site with large trees along the rear of the lot.
- On Bloomfield Lane - two large wooded building sites, Birmingham schools. One site borders a small pond.

### BUILDING SITES ON WATER

- Orchard Lakefront off Old Orchard Trail. True lakefront on southern shore; West Bloomfield schools.
- South Commerce Lake with 1,000 feet of beach and 39 lakefront building sites. Very negotiable on first 5 sales and choice of location.
- Acre and a half on Eastlady with towering trees and Rouge River running along one side and rear of lot, Birmingham schools.
- In Orchard Lake Woodlands backing up to Cranbrook Nature Preserve with lake privileges and expansive views of Orchard Lake.
- 3.3 acres on Paint Creek (Tribut stream), Rochester mailing and Rochester schools. Area of very prestigious homes.
- Wooded lakefront lot on all sport Taylor Lake in Rose Township.

### ACREAGE

- Ten acres on Dorn Court, in Addison Township, can be split into three building sites. Recently wooded rolling terrain.
- Ten building sites from one acre to ten acres in Grand Blanc, possible multiple on all parcels: one 19 acre site zoned multiple.
- Acreage in Avon Township ready for \$85,000 - \$85,000 single family housing development.

1521 West Maple Road - Birmingham, MI 48009  
Phone (313) 947-7239

**You Get More**  
Hometown News  
Observer & Eccentric  
NEWSPAPERS

**Save a life. Learn CPR.**

American Red Cross

Together, we can change things.

**Chamberlain REALTORS**

● BIRMINGHAM 646-6000

● BLOOMFIELD HILLS 647-5100

● WEST BLOOMFIELD 851-8100

● FARMINGTON HILLS-FRANKLIN 626-9100

● TROY 689-8900

● ROCHESTER 651-8850

