

# Council swerves from zoning

Continued from Page 1

Botsford's plans call for building fourth and fifth floors on the south tower. That addition would provide the hospital with approximately 30 percent more room than the original north tower.

Although some beds in the north tower would be removed, the additional floors would offer about 36 new beds, said Gerson Cooper, hospital administrator. Cooper made few comments at Monday's public hearing other than recapping the hospital's struggle in moving ahead with expansion plans.

The hospital's project also calls for moving the lobby south of the existing entrance and adding three elevators, nurses' locker rooms, expanded surgical and cafeteria areas. New visitors areas, patient solariums and examining rooms would be added, Cooper said.

Much of the south tower's height is due to plans for locating an equipment penthouse on its top, similar to the north tower. Although hospital architects have been developing other plans to put the penthouse elsewhere, the

structure can remain at the top if the council adopts the amendment next week, Tuttle said.

Although hospital architects had been working on new plans if the council continued to oppose the south tower's height, Cooper said earlier that none of the new plans are as "good, operationally, architecturally or from the standpoint of cost effectiveness, as the original plans."

Council's expected amendment of the special purpose-2 (SP-2, restricted for hospitals) will be the third time officials have overturned the planning commission's recommendations on loosening specific height restrictions. The MetroVision cable tower and Alexander Hamilton Insurance Co. cupola are now higher than 60 feet.

Even though several residents who live near the hospital turned out in support of the hospital's expansion plans, including the south tower's proposed height, council members-elect Joan Dudley and Joe Alkateeb voiced their opposition to amending the zoning ordinance.

"We have to balance the Botsford

problem with a possible effect on the city," Dudley said. "... adopting this could be a policy change."

Dudley told council members that "sporadic changes are detrimental" and "as of right now, this is for one land owner only."

But she added that city officials had failed to find out whether city residents had changed their minds in the last few years about maintaining the city's low-profile appearance.

"I am not here to speak against the hospital," Alkateeb said.

But he referred to two 1979 ballot questions, which voters defeated, asking if senior citizen housing and industrial-research office buildings should extend beyond 60 feet in height.

Echo Valley condominium association president Fred Hildebrand summed up much of the concerns about amending the ordinance for Botsford expansion plans: "Once you bend a regulation or an ordinance, it is going to be bent again. It is going to set a precedent. I want to keep Farmington Hills a bedroom community."

## Minister defends group's action

Continued from Page 1

"That's a lie," Prisk said. "The only way to get on the Campus Life mailing list is to come to an activity."

Prisk said, however, that the organization does have a mailing list with 450 to 500 names of North Farmington students on it.

Prisk added that "22,000 or 23,000 students are involved" in Campus Life activities in the metropolitan area.

Prisk, who said he is an "interdenominational" minister with a group

called Evangelical Church Alliance, said he has 30 people working for him. "If you count volunteers, there are

more like 120," he said.

Youth for Christ has an office at 24531 Eight Mile, Detroit.

## Students react to movie

Continued from Page 1

"It just shows you how little the everyday common person knows about the bomb," said Berger, noting that some of the movie's central characters didn't know that war was coming until the missiles left their silos. "Look how little control they had over this."

CHARLES D. ROSCH  
Finance Director/Treasurer

### ATTENTION DOG OWNERS CITY OF FARMINGTON HILLS

1984 Dog Licenses are available December 1, 1983 through February 28, 1984 at the Farmington Hills City Hall, 31555 W. 11 Mile Road, Farmington Hills, Michigan 48018.

OAKLAND COUNTY FEES ARE:  
\$ 5.00 for Unlicensed Animal Licenses  
\$ 7.50 for Male or Female Licenses  
\$15.00 for Delinquent Licenses as of March 1, 1984.

Rabies and unsexed animal certificates, signed by an accredited veterinarian, must be presented when applying for a license. The certificate must show vaccine as being effective through the date of application. A copy of a receipt from the veterinarian is NOT acceptable.

Published November 17, 21, 24 and 25, 1983

### WATCH FOR:

**THE MOST EXCITING BRIDAL SALE  
OF THE YEAR  
at Creations by Pollak's  
FARMINGTON HILLS**

**STOREWIDE SALE**  
25% off  
OPEN SUN. 11:30-3:30  
30% off  
velours & wools  
**HINKLE'S Fabrics**  
"The Store of Satisfactory Service"  
Burton Hollow Plaza  
Six Mile at Farmington  
425-1585  
425-1586  
Open Sun. 11:30-3:30

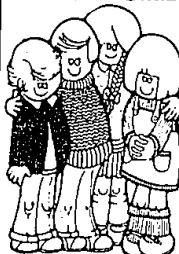
**Haverhill Farms**  
**FALL SPECIAL**  
Indoor Ring  
4 Riding Lessons  
New Students  
**\$30**  
Open 7 Days  
40965 14 Mile West of  
Walled Lake Regency  
Call Now  
**624-5554**

**QUALITY CLOTHES**  
for Ladies, Men & Children  
FACTORY OUTLET DIRECT TO YOU  
No Middleman • Below Wholesale  
**Save 55% and more!**  
**MEN & LADIES PULLOVER SWEATERS**  
with ties \$9.95 AD TIES \$2-1.49  
Winter Jackets • Sweaters  
18768 Middlebelt South of 7 Mile 478-7911  
**LADIES QUILTED COAT**  
Sizes XS, S, M, L, XL, 5 Colors \$39.99  
While Supplies Last  
**MIDDLEBELT**  
Sun 10-5 M-T-W-Th 10-9 Fri. 10-2 Closed Sat.  
**Designer Blue Jeans**  
\$7.95, \$9.50, \$11.50  
Ladies' Stretch, Mens & Childrens  
Everyday Low Price

"It makes you want to be more informed. You have to know what's going on."

ADDED JONES, "I want to know what's really the situation between the United States and Russia."

### PRE-CHRISTMAS SALE



**MYLO'S**

"The 20% off fashion store for children"

**30% OFF**  
the retail price on all merchandise (except jeans and accessories).  
**3 DAYS ONLY  
NOVEMBER 25 - 27**

MUIRWOOD SQUARE  
Grand River & Drake  
Farmington Hills  
476-1719

WONDERLAND CENTER  
Middlebelt & Plymouth  
Livonia  
261-2212

### Having a Country Christmas?

discover **WARREN'S CORNER**

We have it all from candles to cupboards! Gifts for everyone (even that "hard to buy for" relative. Americana, folk art, furniture and much more.

Special Holiday Sale  
**Bucks County Furniture**

**20% Off**

thru Dec. 3, 1983

Quilting Calicos..... 15% Off

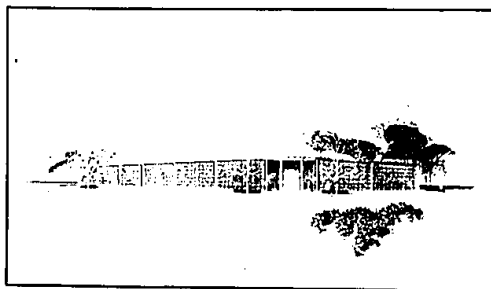
**WARREN'S CORNER**



23285 Farmington Rd.  
2 Blks S. of Grand River  
**478-1259**

## "Oakland County's Full Service Cemetery" Oakland Hills Memorial Gardens

"Enduring Beauty and Care"



Oakland Hills Memorial Gardens proudly announces a new Chapel-Mausoleum to be completed in 1984. This beautiful and durable structure will be constructed with the finest marble and granite stone work, custom-made stained glass, and hand-carved oak doors and trim. The 208 foot long mausoleum offers 900 crypts and 1000 cremation niches. Pre-construction prices, now available, are comparable to conventional burial; terms up to 60 months. Detailed information can be forwarded to your home upon request.

## Oakland Hills Memorial Gardens

12 Mile and Novi Roads  
Opposite Twelve Oaks Mall

349-2784

Novi

851-2335

**CANCER.  
NOT  
KNOWING  
THE RISKS  
IS YOUR  
GREATEST  
RISK.**

A lot of people think cancer is unbeatable. That simply isn't true. In fact, over two million people have had cancer and survived to lead happy, normal lives. And not only can cancer be beaten, it can also be prevented.

There are definite precautions that have been proven to decrease your risk of getting certain cancers. Talk with your physician about how often you need cancer-related checkups.

Ask your local American Cancer Society to send you a free booklet about cancer risks. Learn the facts about cancer.

And make not knowing the risks, one less risk.



How you live may save your life.

OPEN DAILY 10-6  
FRI. 10-9  
SUN. 12-4  
**Village Outlet**  
33224 Grand River (E. of Farmington Rd.)

Always 20-40% OFF

**THE VILLAGE SHOE INN**  
**\$200 OFF**  
on New Fall Shoe or Boot Purchase with coupon  
OFFER Valid thru Dec. 7  
Rochester 410 Walnut Blvd. • 652-2695  
Farmington 33224 Grand River 474-7105  
East Detroit 21066 Kelly Rd. • 775-7540  
Warren 12 Mile/Shoenet • 771-1365  
250 E. 14 Mile • 589-3434

The Perfect Gifts  
14kt.  
Earrings  
**\$10.00** pair  
14kt. Bracelets  
"10. ea.  
18" 14kt. Chains "15 ea.

Large Selection  
14kt.  
• Chains • Charms \$15 per gram  
• Bracelets

Layaway for Christmas  
**The Gold Mine**  
477-4245  
Sale Now thru Nov. 27  
Open Sundays 12-4

### Missy, Queen & Half Sizes

Get an additional  
**10% OFF**  
any  
Non-Sale Items  
with this ad now thru  
November 27, 1983

Featuring: Leslie Fay, R & K,  
Weatherlane, Country Suburbans, Chic Jeans...

### CLOTHES LINE II

Jr. Women's Sizes 3-15

Asst. Lee & Zena Cord-Jeans "17"  
SWEATERS Name Brands "10"-12"  
Other Sweaters 20% OFF our price  
Suits & Blazers below Mfg. cost

**LINGERIE**

• Barbizon • Kaiser • Appel

Now thru Sunday, Nov. 27 477-5199