

## exhibitions

### ● EARLY ISLAMIC ART

The first showing of 10th through 13th century textiles from the Detroit Institute of Art's permanent collection will run through Jan. 8 at the Institute, 5200 Woodward, Detroit. The garment fragments on display were found in the burial grounds of Qa' and al-Hakim in Upper Egypt, where they were preserved by the dry climate.

### ● ITALIAN 18TH-CENTURY DRAWINGS

Drawn from a period when Venetian art was the most important in Italy, 65 works in the exhibit at the Detroit Institute of Arts reflect diverse subjects and styles from religious studies to caricatures. Artists include Canaletto, Francesco and Giacomo Guardi and Giambattista Tiepolo. The exhibit will run through Jan. 15.

### ● CONTEMPORARY PHOTOGRAPHS

More than 100 photographs dating from 1950 to 1983 will be shown at the Detroit Institute of Arts through Feb. 5. Included in the display are works by Diane Arbus, Howard Bond, Harry Callahan, Elliott Erwitt and Ralph Gibson.

### ● BLIXT GALLERY

A two-man show of the photographs of Jay Asquini and William Pelletier, entitled "Downriver and Upstream," will be on exhibit through Jan. 8 at the Blixt Gallery, 229 Nickels Arcade, Ann Arbor. Asquini's subject is people going about their daily lives. The photographs were taken in Detroit's downriver area. Pelletier's photographs were taken in the woods of Vermont. Hours are 10 a.m. to 5 p.m. Monday-Friday, and by appointment.

### ● DE GRAAF FORSYTHE GALLERIES

Fifteen paintings and 10 drawings by David Miretsky will be displayed through Jan. 5 at De Graaf Forsythe Galleries, 201 Nickels Arcade, Ann Arbor. Hours are 11 a.m. to 5 p.m. Wednesday-Saturday and by appointment.

### ● VALDEMAR'S GALLERIES UPSTAIRS

A panoramic view of the Oriental print will be shown this month at Valdemar's Galleries Upstairs, 103 S. Ann Arbor St., Saline. Graphics and related arts from the 17th through 20th centuries will be exhibited and sold. For information, call 429-7854.

### ● DETROIT INSTITUTE OF ARTS

"Design in America: The Cranbrook Vision 1925-1950" is a major exhibition of the wealth of architecture and design in our midst. The influence of Cranbrook Academy of Art on 20th century life is traced and documented with 240 masterworks from public and private collections. Continuing through Feb. 19. Hours are 9:30 a.m. to 5:30 p.m. Tuesday-Sunday. Free public tours at 12:15 p.m. Tuesday-Saturday, 1 p.m. Sunday, 5200 Woodward, Detroit.

### ● YAW GALLERY

Ancient Peruvian weaving and a group of small objects are on display through the holiday season, 550 N. Woodward, Birmingham.

### ● PAINT CREEK CENTER FOR THE ARTS

Works by five photojournalists — Manny Cristomo, David Turnley, Hugh Grannum, Taro Yamasaki and Todd Weinstein — are on display through Jan. 7. Titled "Personal Focus," the content includes Turnley's color photos from Lebanon as well as Weinstein's people in an urban environment. Yamasaki, a Pulitzer Prize winner, shows his black and whites dealing with a migrant worker camp in Florida. Hours are 10 a.m. to 5 p.m. Tuesday-Saturday, 407 Pine, Rochester.

### ● FIRST FEDERAL OF MICHIGAN

"Bears," a show of stuffed and stitched art by Carolyn Vosburg Hall of Birmingham, is on display in the main office lobby window through the holidays. Hall is an artist, author of six books on soft sculpture, stuffed and stuffed art and innovator par excellence. First Federal is at 1001 Woodward, Detroit.

### ● DETROIT GALLERY OF CONTEMPORARY CRAFTS

Holiday show emphasizes functionalism in items ranging from blown perfume bottles, ceramic trivets, handwoven ties and leather baby shoes to cookware, notecards, wearables and jewelry. Gallery hours are 11 a.m. to 5 p.m. Monday-Saturday, until 7 p.m. Dec. 22-23, 301 Fisher Building Detroit.

### ● ALICE SIMSAR GALLERY

Works by gallery artists will continue through Jan. 18. Included are Gary Antelman, David Lee Brown, John Brudson, Laura Shecter, Julian Stanczak, Jean Welbaum and Vasa and Adja Yunkers. Hours are 10 a.m. to 5 p.m. Tuesday-Saturday. Closed Dec. 25 to Jan. 2, 301 Main, Ann Arbor.

### ● DEGRAAF FORSYTHE GALLERIES

Paintings and drawings by David Miretsky continue on display through Jan. 5. Hours are 11 a.m. to 5 p.m. Wednesday-Saturday, 201 Nickels Arcade, Ann Arbor.

### ● RUBINER GALLERY

Holiday exhibition of paintings, sculpture and graphics includes works by Ayiva Robinson, Susan Crile, Sheron Francis, Jeanne Tennent, David Tammany, Marjorie Hecht, Chuang Che, Glen Michaels, Larry Zox, Kikio Saito, Robert Roesch, Darryl Hughes, Nancy Thayer and Fritz Mayhew. Hours are 10 a.m. to 5:30 p.m. Tuesday-Friday, until 9 p.m. Saturday, 7001 Orchard Lake Road, Suite 450A, West Bloomfield.

### ● ROBERT L. KIDD ASSOCIATES GALLERY

"Update Cranbrook" includes works by 62 alumni and faculty of Cranbrook Academy of Art. Organized to complement the big Cranbrook show at Detroit Institute of Arts. Continues through Jan. 28. Hours are 10:30 a.m. to 5:30 p.m. Tuesday-Saturday, 107 Townsend, Birmingham.

### ● HABATAT GALLERIES/VENTURE GALLERY

Works by William Carlson and Steven Weinberg continue at Habitat Galleries. On exhibit through the month, Bennett Bean's glazed and painted ceramic vessels are on display at Venture Gallery (on the street level) through December. Bean exchanges clay for canvas for his beautiful, painterly work. Hours are 10 a.m. to 6 p.m. Tuesday-Saturday, until 9 p.m. Friday, 28235 Southfield, Lathrup Village.

### ● HILL GALLERY

Paintings by Eddie Arning and charcoal and pigment on handmade paper by Michel Haas will be on display through Jan. 10. The gallery is at 163 Townsend, Birmingham.

### ● BALLEFORD ARCHITECTURAL BOOKS

Brain waves, sketches, drawings, projects and buildings by Gunnar Birkerts of Birmingham are on display through Jan. 15, 98 Scotland St., Toronto, 10 a.m. to 6 p.m. Monday-Saturday.

### ● PRINT GALLERY

"Different Places," serigraphs by Thomas McKnight, are on display through January. There are various sizes and suites available including "Views of Venice" and "Valencia" and other room interiors. Hours are 10 a.m. to 6 p.m. Monday-Saturday, until 9 p.m. Tuesday-Saturday, 250 Martin, Birmingham.

to 6 p.m. Monday-Saturday, until 9 p.m. Tuesday, 29203 Northwestern, Southfield.

### ● COUNTY GALLERIA

"Animals in Art" continues through the month with many fine artists represented: Carolyn Hall, Nora Mendoza, Glen Michaels, Ronald Scarbrough, Charles Culver and others. Open during regular business hours, executive office building, 1200 N. Telegraph, Pontiac.

### ● HALSTED GALLERY

Exhibit of gallery acquisitions includes works by Michael Kenna, George Tice, Doug Frank, Edward Steichen, Jacques-Henri Lartigue, Berenice Abbott, Edward Weston and Imogen Cunningham. Also featured are a number of new books. Continues through Jan. 28. Hours are 10 a.m. to 5:30 p.m. Tuesday-Saturday, 560 N. Woodward, Birmingham.

### ● GALLERY 22

Holiday show features works by Pat Mayhew, Charles Gale, Denny Fox, Nanci Closson, all local, along with aquatints by Max Pappert and Johnny Friedlaender, engravings by James Coignea and wide selection of watercolors. Hours are 10 a.m. to 6 p.m. Monday-Friday, until 9 p.m. Thursday and until 5 p.m. Saturday, 22 E. Long Lake, Bloomfield Hills.

### ● SHELDON ROSS GALLERY

Works by gallery artists continue through December. Beckman, Burfield, Gross, Koltwitz, Jerry and March-

drosian. Hours are 11 a.m. to 5 p.m. Tuesday-Saturday, 250 Martin, Birmingham.

### ● THE GALLERY . . . AT MAINSTREET PLACE

Works on paper by Canadian-born artist Terry Goltz make the first show for this recently opened Royal Oak Gallery. Goltz participated in a juried "New Artists Show" at Madison Square Garden in New York last year. Local artists featured among the gallery regulars include Pat Dunn Brenner, R.J. Laney, Sharlene Beck, Tamara Esner and Shirley Gower. Show continues through Jan. 10. Regular hours are 10 a.m. to 5 p.m. Tuesday-Sunday, 803 N. Main, Royal Oak.

### ● TROY ART GALLERY

Holiday gifts are highlighted through Jan. 14. Included are original ceramics, stained-glass decorations, hand-designed tote bags, inlaid wooden pieces along with paintings, art posters and Japanese woodblock prints. Regular hours are 11 a.m. to 5:30 p.m., 755 W. Big Beaver, Suite 131, Troy.

### ● SCHWEYER-GALDO GALLERIES

"Floating Pictures," a one-woman exhibition by Francoise Gilot, will continue through Jan. 12. Gilot, an internationally known artist, is possibly best known for her popular book, "Life With Picasso." Regular hours are 11 a.m. to 5:30 p.m. Tuesday-Saturday, 330 Hamilton Row, Birmingham.

### ● GALERIE DE BOICOURT

"Folk Art of Christmas" is the last major show for this gallery, which is changing focus but not location. After this, in smaller quarters in the same building, owner Eve Boicourt, specialist in folk art, textiles and books, will be doing more consulting work and more specialized shows. December hours are 11 a.m. to 6 p.m. Monday-Saturday and by appointment, 250 Martin, Birmingham.

### ● GALLERY BIRMINGHAM

Art Nouveau and Art Deco selections along with Erté jewelry and works by R.J. Laney, David Ellis Garrett, Barb Grundeman and mixed media by Susan Thomas of Birmingham are part of a wide variety of items along with graphics, scarves and posters. Hours are 10 a.m. to 5 p.m. Monday-Saturday, 251 E. Merrill, Birmingham.

### ● WOODWARD GALLERY

"Prints from around the World" features works by Noyer, Zox, Bearden, Agam, Appel and Briggs along with a selection of art posters for the Olympics. Hours are 10 a.m. to 6 p.m. Monday-Friday, until 5 p.m. Saturday, 4338 N. Woodward (four blocks south of 14 Mile), Royal Oak.

### ● I. IRVING FELDMAN GALLERIES

New works by Charles Hinman include shaped canvases and cast paper pieces in Lucite boxes. Continues through Jan. 7. Hours are 10 a.m. to 5 p.m. Monday-Saturday, Thursday until 8 p.m. and Sunday 11 a.m. to 4:30 p.m. The gallery has a new address, 6917 Orchard Lake Road, West Bloomfield.

p.m. Monday-Saturday, Thursday until 8 p.m. and Sunday 11 a.m. to 4:30 p.m.

The gallery has a new address, 6917 Orchard Lake Road, West Bloomfield.

### ● DETROIT FOCUS

Clay/10 presents the first invitational group show of the season. Open to the public free of charge. The artists all teach at area universities or centers for ceramics. Continues through the year. Regular hours are noon to 6 p.m. Wednesday-Saturday, 743 Beaubien, Detroit.

### ● MEADOW BROOK ART GALLERY

Gary Bandy, originally from Ortonville, and Tom Hale, a local artist known for landscapes and watercolors of automobiles, are the guests at this third part of Meadow Brook II Invitational. Continues through Dec. 23. Hours are 1-5 p.m. Tuesday-Friday, 6:30 p.m. Saturday and Sunday and evenings when there is a Meadow Brook Theatre performance, Oakland University campus, Rochester.

### ● DETROIT ARTISTS MARKET

Annual holiday show continues through Dec. 27. Included are fashion accessories for both men and women, Christmas ornaments, leaded and etched boxes and panels and many other gift ideas. There's a show by Douglas Semman, professor at Wayne State University and well-known printmaker, in the Upper Gallery.

## Merrill Lynch Realty



**GREAT NEW CONDOMINIUMS**, priced below market! Superb floor plans, some with fireplaces. Ready for immediate occupancy! Children and pets allowed. Great terms! Priced from \$58,990. 851-8100. (50009)



**WOLVERINE LAKEFRONT!** Spectacular Bi-level Ranch offers great view of lake. Features walk-out lower level family room, two fireplaces, 3 bedrooms, seawall and dock. Just listed! 628-9100. \$129,900.



**KINGSWOOD PLACE CONDO'S!** Two bedroom and unit Condo includes all appliances, superb decor, central air, good terms! 628-9100. \$49,900. (48439)



**BIRMINGHAM SCHOOLS!** Excellent family neighborhood includes fenced setting, New kitchen, deck, central air! Outstanding value! 646-6000. \$77,500.



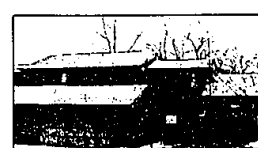
**OVER AN ACRE!** Custom walk-out Ranch in prime Farmington features beautifully landscaped yard with rock garden, enclosed porch. Assume Land Contract! 628-9100. \$149,900.



**SOUTHFIELD!** Spacious first floor Condominium unit includes 2 car underground parking with car wash for owner! Earthtone decor, excellent location. 628-9100. \$39,900.



**STERLING HEIGHTS!** Good 4 bedroom Colonial! Includes fireplace in family room, hardwood floors, tiled and partitioned basement. Great buy! 689-8900. \$55,900.



**JUST LISTED!** 12 new Condominium units now available at exceptional offering! Beautiful contemporary decor highlights spacious interior. Fireplaces, quality amenities! Priced from \$104,900. 647-5100. (50828)



**SILVER LAKEFRONT!** Walk-out Ranch includes year round recreation! Two fireplaces, formal living room, lower level family room, great home for entertaining! 651-8100. \$129,900.



**TRANQUIL TREED SETTING** frames colonial style Ranch with open floor plan. Contemporary neutral decor, large kitchen with many built-ins, exceptional finished basement with wet bar. Den or office too! 628-9100. \$79,900. (50571)



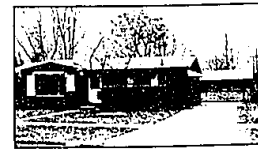
**LOCATION!** Surrounded by mature trees, superb Ranch with walking distance to Downtown Farmington includes gourmet kitchen, 2-way fireplace, special financing to qualified buyer! 628-9100. \$92,500. (49382)



**MEADOWBROOK SUB.** of Novi features freshly decorated Tri-level. Open living room-family room, rec room with bar. Professional landscaping. 628-9100. \$79,000.



**FARMINGTON HILLS!** Earthtone decor highlights 3 bedroom brick Ranch. Family room, covered patio, attached garage. 628-9100. \$58,500. (49319)



**NEUTRAL DECOR!** Beautifully maintained 3 bedroom Ranch features finished basement with bar and fireplace, deck, quality features! FHA-VA Terms. 628-9100. \$68,900.



**MEADOWBROOK SUB.** of Novi features freshly decorated Tri-level. Open living room-family room, rec room with bar. Professional landscaping. 628-9100. \$79,000.

## Concert to benefit Children's Hospital

The second "Nutcracker" Ballet Benefit for Children's Hospital of Michigan will be held at 7:45 this evening in Ford Auditorium. Performing with the Detroit Symphony Orchestra, under the direction of Michael Kravjowski, will be Dance Detroit with Jacob Lasev director and choreographer.

Last year's benefit raised \$27,000 for the hospital's Apnea Identification Program. This service identifies, evaluates and treats infants who have apnea episodes in which their breathing stops for 20 seconds or longer or who are judged from family medical history to be at risk of sudden infant death syndrome.



1983 Detroit Symphony Showhouse - Wabek North 1711 Morningside Way, Bloomfield Hills

The most magnificent residence in North Wabek is now available at a great reduction in price. Shown by appointment.

Malcolm Leventon Corp.  
988-0110/559-5492  
Long Lake Rd. to Wabek Lake Drive East  
to Indian Summer to  
Morningside Way

BIRMINGHAM 646-6000 BLOOMFIELD HILLS 647-5100 FARMINGTON HILLS 628-9100 TROY 689-8900 ROCHESTER 651-8850 WEST BLOOMFIELD 851-8100