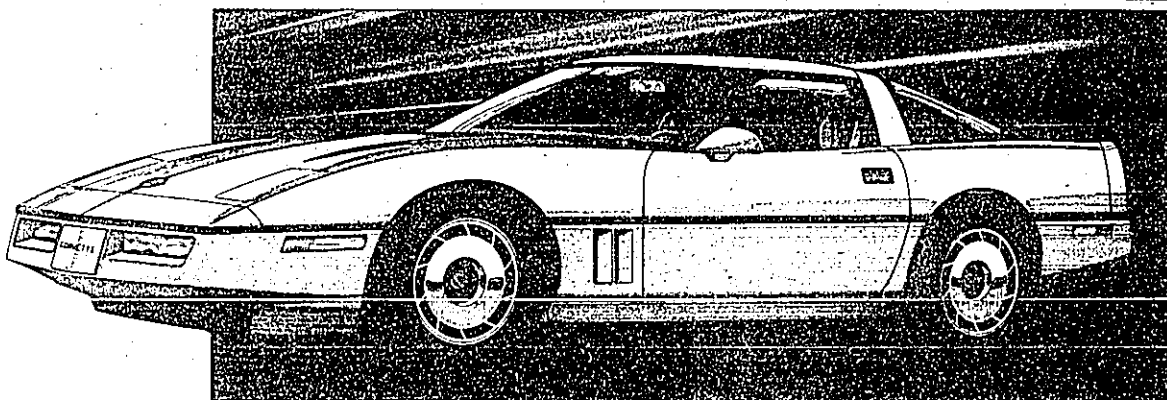


Today's Chevrolet  
**See what taking charge is all about.**

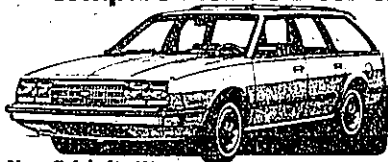


Let's get it together...buckle up.



**Corvette** You've read about it. Seen it take charge on the street. Now get a good close-up view. Take in the innovative engineering, high technology, quality and comfort. The new Corvette. It's come to stand for what "taking charge" is all about.

**Get a firsthand view of the new Chevs.**  
**Compare them. Car-for-car, truck-for-truck with the competition.**



**New Celebrity Wagon**

Move into more wagon. More cargo space, more passenger room, more standard engine than any front-drive wagon ever had before. Move into the new Celebrity Wagon. It's EPA rated higher than many smaller cars. 39 Est. Hwy. [25] EPA Est. MPG\* from a standard electronically fuel-injected engine. An engine so advanced it's fine-tuned by a computer as you drive.



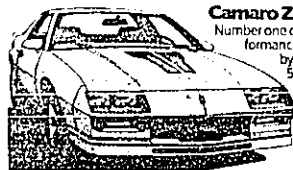
**Cavalier**

Front-drive Cavalier gives you some of the most advanced design and engineering you'll find today. The 2.0 Liter, high-compression, electronically fuel-injected engine cranks out more horsepower than Honda Accord, Nissan Sentra or Toyota Tercel. And this year, there's a slick new Cavalier look.



**New Celebrity Eurosport**

Now you can add the exciting style of Europe to Celebrity. Now, for 1984, you can have it all. Celebrity comfort, room and trunk space, plus the instant acceleration of Celebrity's advanced electronically fuel-injected standard engine. It's all wrapped up in an exciting new European-styled package called Eurosport.



**Camaro Z28**

Number one on the Camaro performance team. Powered by an available new 5.0 Liter high-output engine with 6-speed transmission. Its sleek shape seems to play to win with the wind.



**New Monte Carlo SS**

Under the hood, five liters of high-performance V8. Spread out before you, an array of dials and gauges. Beneath, stiffened shocks, stiffer springs, torqued on two solid iron stabilizer bars. A new kind of Monte Carlo. A new kind of magic. Ready to take charge on the road of your choice.



**S-10 Maxi-Cab**

Up to 50% more in-cab storage space behind the front seat than Nissan King Cab. With available fold-up rear jump seats and front buckets, it offers room for four people.

**S-10 Blazer 4x4**

Get ready for the thrill of tough technology. Revolutionary Insta-Trac, standard on S-10 Blazer 4x4, lets you shift from freewheeling 2-wheel drive to 4-wheel drive while driving at any speed. It's helped make S-10 Blazer the best-selling sport utility vehicle in the U.S.A.



**Caprice**

Family-size room, vacation-size trunk, full-size comfort and elegance. Last year, Car and Driver magazine called the Caprice Classic one of the "Ten Best Cars." And this year Caprice is even better than ever. The richer, custom-level trim interior is now standard in every Caprice Classic Sedan and Coupe.

\*With available automatic transmission. Use estimated MPG for comparisons. Your mileage may differ depending on speed, distance, weather. Actual highway mileage lower. Some Chevrolets are equipped with engines produced by other GM divisions, subsidiaries, or affiliated companies worldwide. See your dealer for details.

**CHEVROLET**   
**taking charge**

See America's number-one lineup of cars and trucks

**AT THE AUTO SHOW**

**JANUARY 14-22**

**COBO HALL**