

The carnival includes a display of artwork created from paper. STAFF PHOTO

Explore paper as an art form

PAPER IS so much part of our everyday lives when we jot a note, read a newspaper, wrap a gift or write a letter that it's unusual to come across a not so common purpose.

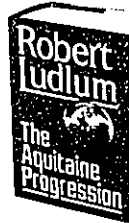
Winter Carnival participants will have that opportunity if they decide to attend the "Paper: Surface and Structure" display at the Birmingham Bloomfield Art Association.

The art will be shown through Saturday, Feb. 11. Thirty-eight artists from

Spain, Cuba and 13 states will have their works on display.

"The show will certainly change their (viewers) point of view of what can be done with paper," according to Ted Ramsay, curator of the show.

HANDMADE PAPER is put together in an array of shapes, colors and forms to create an individualistic piece of art. Kenneth Noland, a prominent name in the artistic form, will have works with price tags of \$5,000.



RESERVE YOUR COPY.

THE AQUITAINE PROGRESSION

a novel by

ROBERT LUDLUM



Mon-Wed & Sat: 10-5:30
Thurs & Fr: 10-9
Closed Sunday

261 Pierce 642-4404

The grand opening of a grand bead store.



Fabulous beads from

the world over: sequins, crystal, exotic, chic. To wear or to sew.

Amish quilts

Stringing, restringing, repair.

A new location. In the Great American Bldg.

280 N. Woodward, next to Sanders and Crowleys
Hours: Mon.-Sat. 10:30-5:00 Tel: 644-7609

BETTY'S Hallmark SHOP

Grand Opening

Thursday, Feb. 2 - Sunday, Feb. 5

Refreshments

FREE GIFT

With \$5.00 Purchase
While They Last • A \$2.50 Value!

GRAND OPENING
VALENTINE'S
SPECIAL...

10% OFF

Hallmark
"Just For You"
Jewelry

BETTY'S Hallmark SHOP

175 W. Maple • Birmingham • 646-6970
Hours: M-W, Sat. 9:30 - 5:30; Thurs. & Fri. 9:30 - 9

The Ultimate cross-country Ski Sale!

Take to the trails... with excellent values in all cross country clothing and equipment.

\$25 or Less All Boots

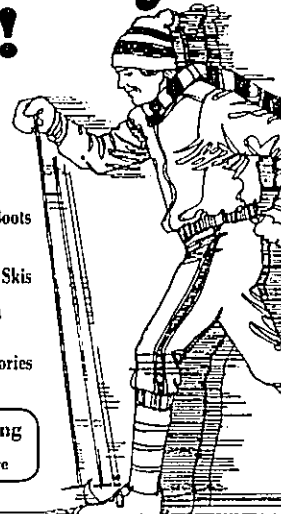
50%-75% OFF All Skis

1/3 to 1/2 OFF

All Cross Country Clothing and Accessories

Ladies & Men's Winter Clothing

Most Items **30% OFF** Or More



RENTALS AVAILABLE

The Sportsman

BIRMINGHAM
184 Pierce St.
646-1225