

## exhibitions

### CRANBROOK INSTITUTE OF SCIENCE

Friday, Feb. 17 — "All Things Beautiful: The Japanese Tradition" features more than 400 artifacts relating to the Japanese dedication to environmental beauty. Included in regular museum admission charge. Hours are 10 a.m. to 5 p.m. Monday-Friday, 7-10 p.m. Friday, 10 a.m. to 10 p.m. Saturday and 1-5 p.m. Sunday, 500 Lone Pine, Bloomfield Hills.

### MICADAW BROOK ART GALLERY

Saturday, Feb. 18 — "Master Painters of Haiti" in the collection of Sir Vincent de la Roche continues through March. The close to 50 paintings on display range from sophisticated to naive with African art as the original source. From here the exhibition goes to eight other American museums. Hours are 1-5 p.m. Tuesday-Friday, 2-6 p.m. Saturday and Sunday and 7-9 p.m. through the first admission during a Meadow Brook Theater performance, Oakland University campus, Rochester.

### BIRMINGHAM BLOOMFIELD ART ASSOCIATION

Saturday, Feb. 18 — Student/Member show continues through March 24. Opening reception is 2-5 p.m. Saturday with awards ceremony at 3:30 p.m. The Art Association is at 1516 S. Cranbrook, Birmingham. Open free of charge 9 a.m. to 5 p.m. Monday-Saturday.

### DETROIT INSTITUTE OF ARTS

Tuesday, Feb. 21 — "The Work of Atget: The Art of Old Paris" by the Albert and Peggy de la Roche Gallery of Photography includes 117 photos by this master artist of the atmosphere of the French capital taken between 1898 and 1927. And while at the museum, you can catch "Fate of the Ancient World" and "Pleasure the Printmaker." Open 9:30 a.m. to 5:30 p.m. Tuesday-Sunday.

### BIRMINGHAM UNITARIAN CHURCH

Very large acrylics by Mary Beth McPherson of Ann Arbor are on display through the month. Open to the public 1-5 p.m. Sundays only, corner of Lone Pine and Woodward, Bloomfield Hills.

### SCARAB CLUB

A show of works on paper, limited to black and white, but done in a variety of media continues the month. Among the award winners are Karen Wydra, Betty Woodward Busley, Paulette Horsman, Ed Felis and Joe Maniscalco. Regular hours are 10 a.m. to 5 p.m. Tuesday-Friday, 2-5 p.m. Saturday and Sunday, 217 Farnsworth, Detroit.

### ART EXCHANGE

"Jewelry in Mixed Media" continues through February. Hours are 10:30 a.m. to 5:30 p.m. Monday-Saturday, until 8 p.m. Thursday and Friday, 415 S.

Washington, Royal Oak.

### YAW GALLERY

"The Woodcut Masters of Haiti" continues through March 8. These panels are a statement of tribal religious experience and a form of folk art. Regular hours are 11 a.m. to 5:30 p.m. Tuesday-Saturday, 150 N. Woodward, Birmingham.

### ROBERT L. KIDD ASSOCIATES

Recent paintings from the "There Series" by Cleve Gray continue through March 1. Regular hours are 10:30 a.m. to 5:30 p.m. Tuesday-Saturday, 107 Townsend, Birmingham.

### DETROIT ARTISTS MARKET

"Michigan Ceramics '84" is a juried exhibit by the Michigan Pottery Association and features works by more than 70 of the state's fine clay artists. Works by invited artists in The Upper Gallery, 1423 Randolph, Detroit.

### XOCHITL GALLERY

New paintings by Stephen Goodfellow continue at the gallery through March 10. A film documenting Goodfellow and his unusual art process and work is being shown throughout the show. Regular hours are 11 a.m. to 5:30 p.m. Tuesday-Saturday, 658 N. Woodward, Birmingham.

### PONTIAC ART CENTER

Photographs and statements by the young people of Detroit's Franklin-Wright Settlements continue on display through March 3. "Color Images/Aldo Mastro" in the Celestary Gallery runs concurrently, 47 Williams, Pontiac.

### PAINT CREEK CENTER

Art faculty exhibition continues through Feb. 25. Works featured include painting, photography, weavings, stained glass, pottery, watercolor, sculpture and sculpture. Hours are 10 a.m. to 5 p.m. Tuesday-Saturday, 407 Pine, Rochester.

### TOWN CENTER GALLERY

"Visions/Viewpoints," three-dimensional serigraphs by James Rizzi, continues through the month, 3000 Town Center, Suite 45, Southfield. Hours are 10 a.m. to 5:30 p.m. Monday-Friday, 11 a.m. to 4 p.m. Saturday.

### TROY MUSEUM

The changing role of women in American society since the 1800s is the theme for the exhibit, "Women in America," which continues through April 15. Hours are 9 a.m. to 5:30 p.m. Tuesday-Saturday and 2-4 p.m. Sundays, 60 W. Waukegan, just west of Livernois, Troy.

### SUSANNE HILBERRY GALLERY

Paintings by Ellen Phelan will be on display through February. Hours are 11 a.m. to 6 p.m. Tuesday-Saturday, 555 S. Woodward, Birmingham.

### SHELDON ROSS GALLERY

"Oscar Bluemner: Drawings and watercolors" is a show of works by this artist, considered to be a modern mas-

ter, even through his body of work was relatively small. Continues through March 10. Hours are 11 a.m. to 5 p.m. Tuesday-Saturday, 250 Martin, Birmingham.

### PEWABIC POTTERY

Retrospective exhibit by two well-respected Michigan potters, John and Susanne Stephenson, covers 1963-1984. Both are Cranbrook Academy of Art graduates. He is on U-M art faculty, she teaches at Eastern. Regular hours are 10 a.m. to 5 p.m. Monday-Saturday, 1025 E. Jefferson, Detroit.

### KINGSWOOD LOWER GALLERY

Current works by 17 members of the Cranbrook Academy of Art fiber department are on display through March 9. Includes traditional woven works as well as innovative approaches. Open during regular school hours, 885 Cranbrook, Bloomfield Hills.

### HABATAT GALLERY AND VENTURE GALLERY

Glass by Klaus Mole will be in the upstairs Habatat Gallery through February while sculptures in wood by Melvin and Mark Lindquist dominate the lower level. Venturi Gallery, 28235 Southfield Road, Lathrup Village.

### MARGROVE COLLEGE GALLERY

Sculpture by Ronald Leax, another Cranbrook Academy of Art alum, will be on display through Feb. 24, 8425 W. McWhorter, Detroit.

### GALLERY ART CENTER

Nine new lithographs by Edna Hibel are on display, Hours are 9 a.m. to 5 p.m. Monday-Saturday, 18331 W. Twelve Mile, Lathrup Village.

### HALSTED GALLERY

"Days of a Century" is an exhibit of photographs by Jacques Henri Lartigue, 560 N. Woodward, Birmingham.

### HOOPERMAN GALLERY

Changing selection of fine crafts including ceramics, jewelry, fiber and glass as well as paintings by gallery artists. 155 S. Bates, Birmingham.

### ELONA AND GALLERY

"Function and Fashion" emphasizing the natural warmth of wool and wood continues through February. The hand-crafted wool clothing is by Bobbye Hertzbach, Peggy Romlin and Carol Aaronson, and the functional wool articles are by Mark Diebolt, Risto Saari and Michael Elkan. Gallery hours are 10 a.m. to 5:30 p.m. Monday-Saturday, until 9 p.m. Wednesday-Friday, Sunday, noon to 5 p.m., Hunters Square Mall, 14 Mile and Orchard Lake, Farmington Hills.

### THE GALLERY ... AT MAINSTREET PLACE

Work by gallery regulars Linda Wagenberg of Bloomfield Township, Terry Golett of Canada and Gwendolyn Gutwein-Hietrick of Indiana, plus watercolors, oils, prints, sculpture, fiber and jewelry are on display through

February. Hours are 10 a.m. to 5 p.m. Tuesday-Sunday, 903 N. Main, Royal Oak.

### OAKLAND COUNTY COMPLEX

In the County Galleria, in addition to the "Sights" exhibit by three Cranbrook graduate photographers (Steven Rost, Ann DeLaVergne and Andrea Eis), there is an exhibit of photography by current Cranbrook graduate students, curated by Carl Toth, photography department head at the Academy. "Three Weeks in Denmark," watercolors by Jean Harding Brown of Troy, are on display in the County lobby during February. Both are open during regular business hours, Monday-Friday, 1500 N. Telegraph, Pontiac.

### SCHWEYER-GALDO GALLERIES

Dual exhibition combines "Master Works on Paper" with drawings and prints by Miro, Etroplan, Calder, Tapes and Lam with "Sincere Singles" by Alejandro Arreus, a series of ink drawings with wash that is both humorous and compassionate. Continues through Feb. 29. Regular hours are 11 a.m. to 5:30 p.m. Tuesday-Saturday, 330 Hamilton Row, Birmingham.

### OWENS ILLINOIS ART CENTER

"Dominick Labino: A Half Century with Glass" features the work of this giant of the contemporary glass movement. Hours are 9 a.m. to 5 p.m. daily through Feb. 26. The Art Center is in the Owens Illinois World Headquarters, Summit and Cherry, Toledo.

### TROY ART GALLERY

Mixed media show of gallery selections continues through Feb. 25. Includes paintings, original prints, Japanese woodblock prints and ceramics. Hours are 11 a.m. to 5:30 p.m. Tuesday-Saturday, 755 W. Big Beaver, Top of Troy concourse, Troy.

### CANTOR/LEMBERG GALLERY

New work by Louise Nevelson, Al Held, T.L. Sollen, Jim Dine, W.T. Wiley, Dubas and recent work by gallery regulars will be on display through February. Hours are 11 a.m. to 5:30 p.m. Tuesday-Saturday, 139 N. Woodward, Birmingham.

### I. IRVING FELDMAN GALLERIES

Works by Richard Smith including a five piece "Kite Painting," which is nine feet long will be on display through February. Included are banners, mobile drawings, paintings on paper, aquatints and graphics. Hours are 10 a.m. to 5 p.m. Tuesday-Saturday, Thursday until 8 p.m., 6917 Orchard Lake, West Bloomfield.

### HILL GALLERY

Sculpture show includes works by Louise Bourgeois, Mark DiSuvero, Charles Glimmer, Michael Hall, Tony Smith, Peter Voulkos and Jay Wholley.

Continues through Feb. 18, 163 Townsend, Birmingham.

### DETROIT GALLERY OF CONTEMPORARY CRAFTS

"1904 Ceramics/Visions," features works by nine ceramic artists using themes from George Orwell's 1984 and offering perspectives and interpretations of contemporary society. Hours are 11 a.m. to 5 p.m. Monday-Saturday, 301 Flaher Building, Detroit.

### PIERCE STREET GALLERY

Photographs by Roman Vishniac will be on display through February. These were taken between 1934 and 1939 when Europe was about to self-destruct. Vishniac is highly regarded by his peers and those who appreciate a rare depth of understanding and love of

people. Hours are 11 a.m. to 5 p.m. Wednesday-Saturday, 217 Pierce, Birmingham.

### GALLERY 22

Current show features works by Pat Mayhew, Charles Gale, Denny Foy, Nanci Closson, all local, along with aquatints by Max Papert and Johnny Friedlaender, engravings by James Colnagard and wide selection of watercolors. Hours are 10 a.m. to 6 p.m. Monday-Friday, until 9 p.m. Thursday and until 5 p.m. Saturday, 22 E. Long Lake, Bloomfield Hills.

### DETROIT INSTITUTE OF ARTS

"Design in America: The Cranbrook Vision 1925-1950," is a major exhibition of the wealth of architecture and design in our midst.

## Picasso's prints shown at museum

The full span of Pablo Picasso's career is represented in 253 prints selected for "Picasso the Printmaker: Graphics from the Marina Picasso Collection." The exhibition continues in the Schwartz Graphic Arts Galleries of the Detroit Institute of Arts through Sunday, March 25.

All the prints have been selected from the private collection of the artist's granddaughter, Marina Picasso of Geneva, Switzerland. This is the first exhibition in recent years to focus entirely on Picasso's prodigious achievements as a printmaker. It includes the 1904 etching "The Frugal Repast," rare proofs of his Cubist prints from the Minotaur series, and prints inspired by the women in his life — Olga Koklova (his first wife), Marie-Therese Walter, Dora Maar, Françoise Gilot, and his second wife, Jacqueline Roque.

For some prints, comparisons of various states and edition impressions with the actual plates are shown. Working in a variety of print media from 1904 to 1972, Picasso was as experimental and inventive in printmaking as

he was in painting, sculpture and ceramics.

The exhibition includes lithographs, serigraphs, etchings, woodcuts, linocuts and monotypes. The exhibition was organized by the Dallas Museum of Art; its tour is limited to Brooklyn, Detroit and Denver.

"Picasso the Printmaker" is open to the public without charge during regular museum hours, 9:30 a.m. to 5:30 p.m. Tuesday through Sunday.

Free "Masterwork of the Week" gallery talks will be presented in the exhibition at 1:30 p.m. on Wednesday and Friday, Feb. 29 and March 2, by Marilyn Symmes, the museum's associate curator of Graphic Arts.

A catalog by Dr. Brigitte Baer accompanies the exhibition and is available from the Museum Shop. It includes reproductions of the 253 Picasso prints.

### SOUTHFIELD OPEN SUNDAY 1-4

24004 TEMPLE. Quality built 3 bedroom brick ranch. Finished den with built-in, spacious living room and dining room. 2 1/2 car garage, many new features. Asking \$259,900.

### BEADON SQUARE, SHARPEST 4 bedroom, 2 1/2 bath colonial

you'll ever find. Main floor laundry, library, large family room, fireplace, circular drive, gorgeous lot. A real beauty! Mid-1970's. \$209,900.

### MT. VERNON SUB. Gorgeous 4 bedroom Quad. 3 full baths,

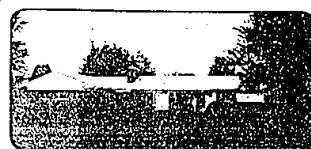
large family room with fireplace, many fine features. Mid-1970's. A good find.

### SHARON MEADOWS. Be the first to see this spacious

colonial. Family room, fireplace, dining room, kitchen, breakfast room. Tastefully decorated. Mid-1970's with excellent assumption or long term 2 1/2% financing.

### Pomeroy — Realtors

559-3344



### SPACIOUS RANCH

BRICK RANCH on large lot, 3 or 4 bedrooms, 1 1/2 baths, living room with fireplace, large covered patio with gas BBQ. Basement with bar, workshop & den. Tremendous potential. Comfortable living with privacy. \$83,000. 559-2300.



### BEAUTIFULLY MAINTAINED

TUDOR HOME in area of custom homes. New door well in family room, new closet in basement, new roof on garage, new screens. Painted in the last year. Polished natural oak floors. \$82,500. 559-2300.



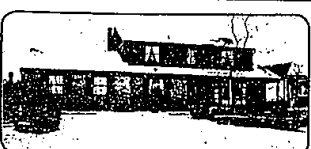
### "VIRGINIA MODEL"

CUSTOM BUILT 3 bedroom ranch on beautifully landscaped lot. Very large family room, heated in-ground pool, 2 1/2 baths, enclosed patio & finished rec room with office. Move-in condition. Immediate occupancy & land contract terms. \$139,900. 477-1111.



### MINI FARM

4.81 ACRE farm in the city. 3 bedroom brick ranch with full garage, 2 car garage, includes 2 out buildings. Zone RA-3. Quick occupancy. Possible to sub-divide. \$129,900. 477-1111.



### BETTER THAN A MODEL

THIS 4 bedroom, 2 1/2 bath Franklin II Model is alive with quality. Professionally landscaped, circular drive. Backs to commons. By appointment only \$174,900. 851-1900.



### LARGE RANCH

LARGE 4 bedroom home in excellent location. Custom built for entertaining. Large den has private entrance and adjoins to home office. \$110,000. 851-1900.



### DESIRABLE ROLLING OAKS

FOUR BEDROOM COLONIAL, library, central air, super large garage and much more. \$125,000. 851-1900.

Lathrup Village  
Mart Hill-Mgr.  
559-2300  
Westland  
Louise Ramsey-Mgr.  
326-2000  
Livonia  
Barbara Winkler-Mgr.  
525-0990  
Farmington  
Sharon Berry-Mgr.  
477-1111

Real Estate One, INC.  
REALTORS

Farmington Hills  
Denny Conrad-Mgr.  
851-1900  
Livonia  
261-0700  
Plymouth  
Tim Potts-Mgr.  
455-7000  
Northville  
Sharon Berry-Mgr.  
348-6430

9 3/4%  
IT'S AVAILABLE AND WE KNOW WHERE IT IS.  
Quality now for the house you want not the one you have to take with higher rates. Call us now. You'll be glad you did.

FARMINGTON HILLS  
CHARMING COUNTRY 3 bedroom, 2 1/2 bath ranch. Extra large family room with natural fireplace den & covered patio with gas grill. Exceptionally maintained & priced at only \$27,000. 477-1111.  
NOVI  
BEAUTIFULLY decorated four bedroom Quad Level home. Family room with fireplace. Upgraded extra thru-out. \$94,000. 348-6430.  
NORTHVILLE  
ROOMY COLONIAL 4 bedrooms, family room, fireplace, 2 car attached garage all on a deep lot with big trees. Walk to sch. \$62,500. 348-6430.  
LAND CONTRACT terms available on this 3 bedroom home on 6 rolling acres. Horse permitted. Large out building. \$90,000. 348-6430.

Michigan's Largest Real Estate Company