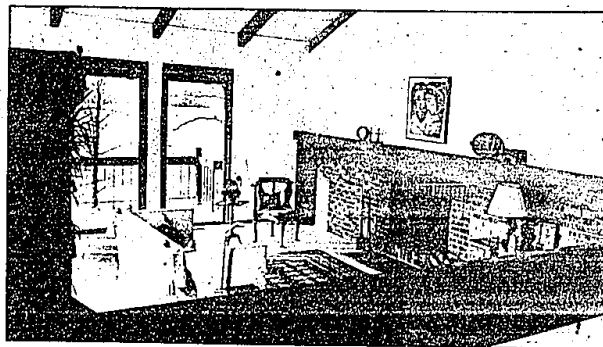
**OWNER RELOCATING IMMEDIATELY - MUST SELL!**

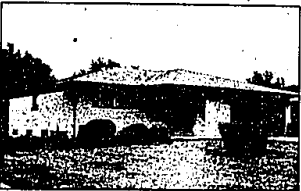
This is a once in a life time opportunity for a buyer who has dreamed of this style of living and felt it was out of reach. Many custom features include extensive ceramic tile in mirrored foyer and gourmet kitchen, cathedral ceiling, wet bar and more! This sensational contemporary home in the city of Bloomfield can be yours. \$249,000. WIV-51290

**THE ULTIMATE IN SETTING**

Lake frontage and treed ravine lot bring privacy and drama to this classic contemporary condo. Four bedrooms, walk-out family room and paneled library are added features. Unusually low maintenance fees are a plus for this prime location property. \$289,000. PHT-50424.

**BEAUTIFULLY MAINTAINED!**

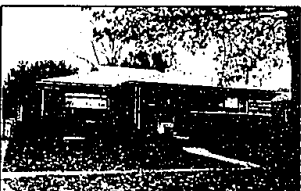
Charming Huntington Woods Colonial features cove ceiling, bay window, hardwood floors, den, and private deck. Close to schools and all amenities. Excellent family neighborhood! \$76,000. KIN-52103

**SUPER RANCH AT THE RIGHT PRICE**

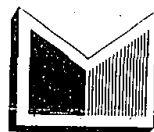
Clean and sharp home within walking distance to shopping. Finished rec. room, patio with gas grill, 3 bedrooms, 1½ baths and 2 refrigerators included! Reduced to \$63,000. LAE-43878

**ABSOLUTELY CHARMING!**

Three bedroom Tudor Style Birmingham home has been totally remodeled. Surrounded with extensive landscaping and a fenced yard. Offered at \$50,000. COE-52170

**LARGE FAMILY HOME**

Nice brick ranch with 4 bedrooms and 3 full baths. Living, dining and family rooms, plus a full basement, natural woodwork and built-in storage. \$44,900. PEN-49670



# RALPH MANUEL

ASSOCIATES, INC. • REALTORS

1821 W. Maple, Birmingham

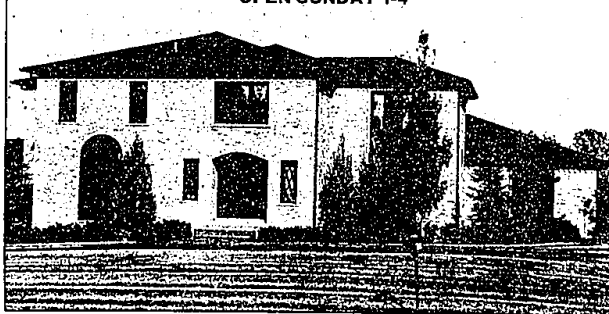
## 647-7100



MEMBER OF TRANSLO RELOCATION SERVICE  
OFFERING COMPUTERIZED MULTI-LIST SERVICES

**OPEN SUNDAY 1-4****ONE OF A KIND - DREAM CONDO**

Exquisitely decorated with no detail missed, this walk-out ranch detached Condo has breathtaking views of towering pine trees and Wakefield Golf Course. Nearly 5000 square feet of living. Three complete bedroom suites, master has "his" and "her" closets and bathrooms. \$389,000. PIE-47658. 1903 Pine Ridge, S. of Long Lake and E. of Middlebolt.

**OPEN SUNDAY 1-4****CUL-DE-SAC SETTING**

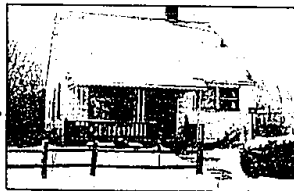
Gracious two story home in North Wakefield. Features 4 spacious bedrooms, family room, library, island kitchen, walk-out lower level with dance floor and natural fireplace. Views of Lower Long Lake. Simple assumption and Land Contract offered! \$319,000. RIW-48976. 3527 Ridgeway Court, N. of Long Lake and E. of Middlebolt.

**ISLAND LAKE FRONTAGE**

Dramatic Contemporary BI-level home with breathtaking views of Island Lake. Open plan with extensive use of glass and decking. Totally updated in neutral tones. Two complete levels of fine living with 2 master suites, 2 kitchens and a total of six bedrooms, five baths, two fireplaces and 3 car garage. Gourmet kitchen with Jenn-air, island and skylite, quarry tile and solid oak complete the home. Quality echoes in all areas. Enjoy setting and lake living in Bloomfield Hills. Newly listed so call today! LAD-52243

**OPEN SUNDAY 2-5****FINAL PHASE UNDER CONSTRUCTION**

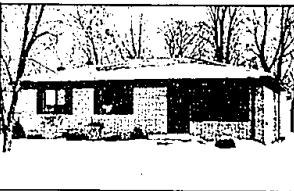
Don't miss the opportunity to be the proud owner of this charming ranch condo with all amenities. Full basement, 1st floor laundry, 2 bedrooms, and 2 full baths. \$85,500. TWE-51086. 22432 W. 12 Mile Road, N. side of 12 Mile and W. of Lahser.

**EXTRA LOT INCLUDED!**

Now decorating in neutral tones, paneled recreation room two car garage and hardwood floors. Assume mortgage or possible Land Contract. Newly listed at \$62,000. LIN-52047

**RARE RANCH CONDO**

This three bedroom condo in neutral tones features large master, kitchen with doorwall plus, a privacy patio, pool and clubhouse. Excellent access to expressways. Priced to sell \$57,900. ROE-46966

**SPOTLESS!**

Describes this beautiful three bedroom brick ranch with a full basement. Built in 1979 and decorated in neutral tones throughout. Beautifully treed lot! \$53,000. SEE-52085

