

Be inventive in how you use strobe



By using a single strobe unit mounted on a stand to the left and above, Monte Nagler was able to produce this photograph of model, Rachel Luskey. Notice the good facial contours and shadows. A reflector card was used on the right side for fill-in.

Most all cameras have an accessory shoe that enables a flash unit to be easily attached. This system is flexible and quite easy to use.

But often, lighting from a strobe mounted directly to the camera produces "flat"-appearing subjects with few of the shadows and contours that are needed to give a face depth and "modeling."

Also, flash units too close to the camera lens will result in "red eye," the reflection of the blood vessels in your subject's eyes onto the film. Red eye is obviously unflattering and most likely will spoil what may have been a good shot.

How can you eliminate these problems associated with flash? By getting your strobe unit off the camera.

THE SIMPLEST and most convenient way of moving your strobe away from your camera is by using a flash bar or "L" bracket.

These take various forms but basically consist of a bracket that joins the flash to the camera. One end of the bracket attaches to the tripod socket on the camera while the other end holds the strobe. A short lead connects the two and synchronizes them.

By introducing an angle between the flash and the camera lens, red eye is eliminated and natural facial contours will be seen in the finished picture.

A broader range of lighting effects can be achieved by completely separating the flash from the camera. With a longer cord and a little practice, you'll be able to hold your strobe in one hand and your camera in the other.

Try holding the flash unit above your head and to one side. This way you'll get good highlights in your subject's face and at the same time minimize background shadows.

For more dramatic effects, affix your

strobe to a tripod or light stand. You'll need a long synchronization cord to do this. But in so doing, you'll obtain a range of lighting positions impossible with "L" brackets or hand-held flash.

YOU CAN accomplish side lighting, back lighting or any other angle you desire. You can even use reflector cards or other flash units for multiple strobe effects.

A word of caution — placing the strobe a distance from the camera may confuse its automatic functioning. With the flash and camera at different distances from the subject, the automatic sensor may be fooled. So, to be safe, use your flash unit on its manual setting.

Strobes are a valuable addition to your photographic equipment. Optimizing their use to produce better results often means getting them off the camera. See the light!

©1984, Monte Nagler

photography
Monte Nagler

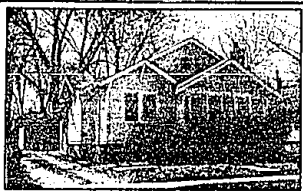


YOU CAN BE PART OF A LEGEND IN THE MAKING.

MAPLE PLACE

A UNIQUE 2 & 3 BEDROOM CONDOMINIUM COMMUNITY IN WEST BLOOMFIELD, FROM \$79,900.

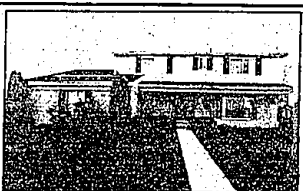
MAPLE RD. 500 FT. WEST OF DRAKE
FOR INFORMATION CALL 559-7954/661-2650
CLASSIC CONSTRUCTION CORPORATION



IN TOWN - UPDATED

- Spacious 2 bedroom with fireplace
- Basement, den, garage and country kitchen
- Extra building lot available
- Blend rate - fixed mortgage

547-2000



MAXIMUM LIVABILITY

- Spacious Colonial in Troy
- 4 large bedrooms, 3 1/4 baths
- Family room with wet bar and natural fireplace
- Large covered patio, full finished basement

643-8500



IN TOWN BIRMINGHAM

- Beautifully decorated Cape Cod
- Living room, dining room, fireplace
- Den, 4 bedrooms, central air
- Hardship sale, reduced below assessment

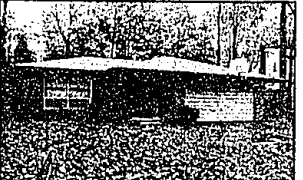
540-6777



10 YEAR LAND CONTRACT

- Southfield Quad w/Crocker Drive
- 4 bedrooms, family room, rec room
- Well maintained inside & out
- Den or in-law suite

557-6700



ENTERTAINER'S DELIGHT

- New decor — not even a nail hole
- Refinished floors; decorator blinds
- Super new deck; rec room with bar
- Mature trees; fine Southfield Sub, Good Assumption

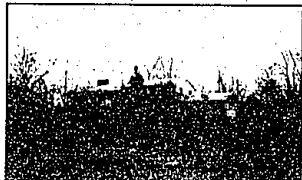
643-8500



CLASSIC COLONIAL

- 6 bedrooms, 3 full + 1/4 bath
- Vaulted library, bayed breakfast room
- Sun room, 2nd floor laundry
- Gorgeous grounds, MANY EXTRAS

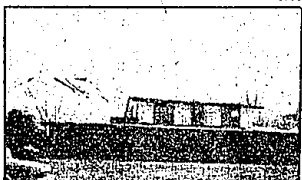
540-6777



BLOOMFIELD HILLS TRI-LEVEL

- Beautifully landscaped, abundance of trees
- Over 1.7 acres, magnificent view
- 3 bedrooms, 1 1/4 baths, two-way fireplace
- New gas f/a furnace, move-in condition

540-6777



SOUTHFIELD-LAHSER & 10 MILE

- 4 bedroom center entrance Colonial
- ONE ACRE LOT, side entrance garage
- Fireplaces in both living room & family room
- Gourmet kitchen, 2 1/4 baths, rec room

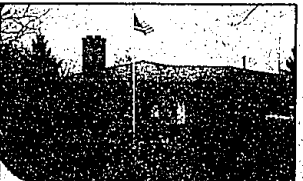
557-6700



LUXURY CONDO LEASE OR SALE

- 3 bedrooms, 2 1/2 baths, library
- 1st floor master suite
- Light neutrals; move-in condition
- 7% assumption or Land Contract

643-8500



EXCEPTIONAL VALUE

- 3 bedroom Aluminum and Brick home
- New French doors, updated kitchen
- Maintenance free, move-in condition
- Cranbrook Village

540-6777



BEVERLY HILLS

- Spectacular view of revive wooded lot
- 2 decks on separate levels, 2 fireplaces
- Property runs on both sides of river
- Unlimited features — A MUST SEE!

540-6777



BIRMINGHAM

- 4 bedroom Colonial with pool
- Prestigious area, central air, 2 1/4 baths
- Park-like setting, circular drive
- Family room, attached garage

557-6700

SOUTHFIELD/LATHRUP
557-6700

ROYAL OAK
547-2000

WEST BLOOMFIELD
851-2303

BLOOMFIELD
694-5788

BIRMINGHAM
540-6777

ROCHESTER
651-3330

TROY
643-8500

Chamberlain
REALTORS

SALE POSITIONS AVAILABLE...CALL TODAY