

Hungry patrons beat a path to Bordella

By Cary H. Cates
Staff Writer

A "bordella" recently opened on a busy corner in Redford Township with one purpose in mind — satisfying the desires of those who enter through its doors.

The owners have gone to great lengths to offer "items" to satisfy a variety of tastes, ranging from "hot and spicy" to "mildly pleasing." They even

boldly display the name and nature of the business on the side of the building, Madam's Chili Bordella.

John Sullivan and Joe Nahra, who run the business for a group of investors, claim their "bordella" is the perfect spot to have a "love affair with a bowl of chili. Ten varieties are listed on the menu, with three or four available each day on a rotating basis.

Featured are such chili classics as All American Chili (sauce-island style),

Texas Chili, Mexican Chili, Italian Style, Garden Vegetables (no meat), Beef and Pork, Cincinnati Chili, Sausage and Onions, Breast of Chicken and Vegetables, and of course, Madam's favorite — ground beef and four kinds of fresh peppers.

Also on the menu, for non-chili lovers, are sandwiches, burgers, "South of the Border Fishes" and potato meals. Madam's also features a raw oyster bar and beverage bar.

BESIDES SELLING their chili, Sullivan and Nahra are trying to sell their "chili bordella" concept to people interested in investing in a restaurant. The idea and system, they say, can be adapted to just about any building.

The Redford "bordella" sits Telegraph just north of Joy Road, in a re-modeled "rock-o-roll bar," Sullivan said.

Decorated with red-velvet chairs, chandeliers and plush wallpaper, Ma-

dam's is a step above the stereotyped corner man joint with stools and a counter, the men said.

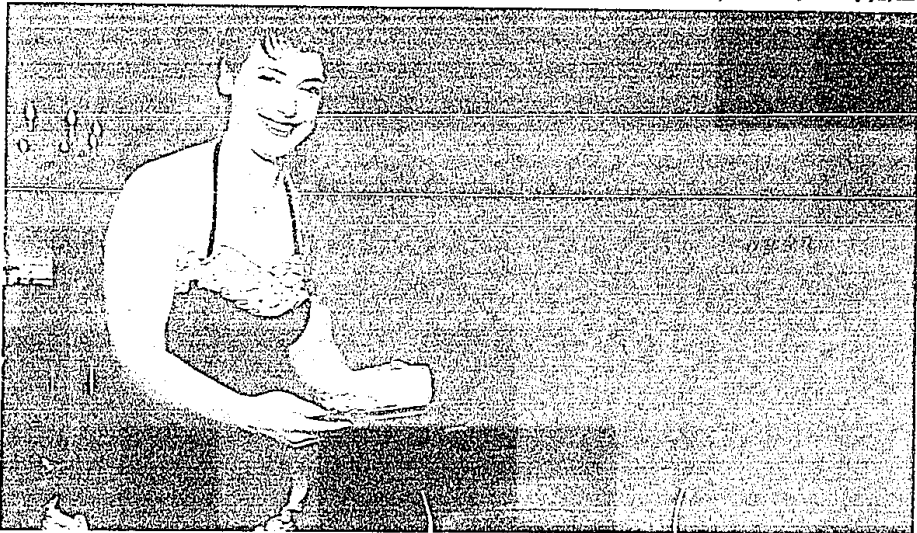
"We wanted the atmosphere of a bordello, but we offer chili rather than women," Nahra said. "We wanted people to get the feeling of going to a nice place. We call it the classic chili restaurant in town."

But like the corner chili joint, Sullivan and Nahra said Madam's is easy on the wallet.

For \$2.95, you can go to Madam's and eat a bowl of your favorite chili with all the fixings. In fact, you even can eat the bowl because the chili is served in a scooped out loaf of bread.

"Madam's is an inexpensive place with a casual atmosphere, yet elegant," Nahra said. "That you're not spending \$50 a head to sit in an elegant place."

"This is the place you go when you get that taste for chili on a Friday



Sandy Williams, a Madam's employee, serves a bowl of Madam's favorite chili. Madam's Chili Bordella is on Telegraph Road, just north of Joy, in Redford Township. DAN DEAN, staff photographer



Our 6th Year in Farmington

Used 4 drawer FILE CABINETS \$35 ⁰⁰ and up	STACK CHAIRS \$24 ⁰⁰ and up
\$169 ⁰⁰	SWIVEL TILTER \$59 ⁰⁰ and up
STENO CHAIRS \$39 ⁰⁰ and up	COMPUTER TABLES \$24 ⁰⁰ and up
WOOD DESK \$199 ⁰⁰	\$159 ⁰⁰ and up

Executive Office Supply
Open Daily 9:00-5:00
24010 Haggerly Rd. Farmington Hills
In The Farmington Industrial Center Bldg.
Call 471-1474 for a Free Catalog
Deliveries Available

British Made Lace Curtains

- With Rod Pocket
- By the Yard
- Ready to Hang
- No Seaming
- Machine Wash & Dry

The Lace Curtain Shop
332 1/2 Grand River Farmington
11:00 am - 6:00 pm
Tel: 471-2058

VALUABLE COUPON

50% Off
On ALL Drycleaning

Arnold Cleaners

22185 Coopers Rd. Farmington Hills
22183 Coopers Rd. Farmington Hills
25841 Rockledge Rd. South of 12 Mile, Royal Oak
31835 W. 10 Mile on Oakland Lake, Farmington Hills

This Coupon Must Be Presented With Incoming Order — Expires 5/25/84

Send Your Love Around The World.
Christian Children's Fund, Inc.
1-800-228-3393

VALUABLE COUPON PERMS

HAIR COMPANY

29.50 Reg. 30⁰⁰

HAIRCUTS for the price of 1

Offer good thru 5-5-84

22715 W. 7 Mile • Livonia • 523-1064

Look for the "SOMEONE SPECIAL" booth at BUSINESS EXPO 84
COBO HALL
May 8-9-10, 1984

Win a FREE TRIP to TORONTO
Supplemental Staffing, Inc.
The Temporary Help People

Blades & Irons

Custom Designed Perms

Save 25% with Coupons

Short	Medium Length	Long
\$20	\$25	\$30

20200 Grand River, Corner Woodland & Grand Lakes Farmington Hills 478-8656

Temple Israel Sisterhood

Artisans '84

SUNDAY, MAY 6 — 12 noon to 6 p.m.
MONDAY, MAY 7 — 11 a.m. to 6 p.m.

AT TEMPLE ISRAEL
5725 Walnut Lake Road — West Bloomfield

See the fine works of many creative artisans — Pottery, Glass Work, Jewelry, Weaving, Crafts, etc. ... Stroll through our boutiques ... Have a snack or complete lunch at our GARDEN OF EATIN'.

- Sunday, May 6 - 1:30 p.m. — Jeffrey Bruce, make-up artist and author of "Jeffrey Bruce About Face"
- Monday, May 7 - 11 a.m. — David I. Lipschutz, M.D. speaking about "Why Am I So Cranky and Other Hormonal Problems"
- Win a fabulous 6 day's night vacation for two at Vistara Resort* adjacent to Epcot Center and Walt Disney World in Lake Buena Vista — compliments of Timeshare Vacations, Inc., Eastern Airlines and Alamo Rent-A-Car plane or available here

FREE PARKING

WIN!
This Ladies 18K Gold Quartz Watch

FREE!
No Purchase Necessary
 contest ends May 15/84

ENTER NAMES AT TAPPER'S

Tapper's Jewelry

Free Gift wrap • Cash Returns

22185 Coopers Rd. Farmington Hills
22183 Coopers Rd. Farmington Hills
25841 Rockledge Rd. South of 12 Mile, Royal Oak
31835 W. 10 Mile on Oakland Lake, Farmington Hills

ORDER BY PHONE: 357-5578

Ann's Hair Design

29249 Rayburn • Livonia

11:00 am - 8:00 pm

PERMS \$15⁰⁰ and up

70173 \$16⁰⁰

9-5 Open Every Evening

Jewelry Gottings
by Allen DeQua

Those who would be more ambitious may obtain help from an emerald. It was once thought to sharpen the intellect and cure laziness of all kinds. The emerald, May's birthstone, was also once believed to be capable of detecting thieves.

We're able to provide just what you want in any jewelry item. If we don't have it, we'll get it for you. Stop in...we're always pleased to show our stock.

DuQua Jewellers

New Location: Farmington Hills
228-2614 474-1051 739-7144

Send Your Love Around The World.

Christian Children's Fund, Inc.

1-800-228-3393 (Toll Free)

THIS IS A TEST AD

In order to test the effectiveness of our newspaper advertising, we are offering for 6 days only, the new 1984 PFAFF Hobby Strüch Stüch Open Arm Sewing Machine.

\$166⁰⁰

FREE WARRANTY
FREE LESSONS

Model #3021

Anderson Sewing Machine

1-800-228-3393

FARMINGTON PUBLIC SCHOOLS

NOTICE OF PUBLIC HEARING ON INCREASING PROPERTY TAXES

Since the Farmington Public Schools has authority to establish the number of mills to be levied from within its authorized millage rate, and since the Truth in Taxation Act, as signed into law on February 9, 1982, mandates that a Public Hearing be held on any proposed additional millage rate, the Farmington Public Schools will hold a Public Hearing on Tuesday, May 8, 1984, 8:00 p.m., at the Administration Building, 32500 Shlawassee Street, Farmington, Michigan.

Thus, the Board will have an opportunity to receive testimony and discuss the levy of the proposed additional millage rate for the ensuing fiscal year.

Presently, the Farmington Board of Education is authorized to levy 37.29 mills for operating purposes. The amounts actually levied during the past several years are listed:

Operation	Debt Millage	Total Millage	Levied
1977-78	33.88	3.8	39.68
1978-79	33.88	3.8	39.68
1979-80	36.28	3.4	39.68
1980-81	33.53	2.75	36.28
1981-82	33.25	2.0	35.25
1982-83	32.67	2.0	34.67
1983-84	31.80	1.9	33.70
1984-85 (Proposed)	33.00	1.7	34.70

The District's proposed budget for 1984-85 provides for expenditures of \$46,256,633. Anticipated revenues will be less than this amount, creating a shortfall of approximately \$2,505,181. By law, the amount of taxes which may be levied is limited to an amount which would generate the property tax revenues of the previous year, except that the Board of Education, by Resolution, may increase the taxes. Therefore, the Board of Education has proposed, by Resolution at the April 10, 1984 Board Meeting, to increase the millage levy for the 1984-85 school year by 1.2 mills over the levy for the 1983-84 school year. This additional levy will increase tax revenues by 5.09% over the Base Tax Rate Limit.

The public should note that the maximum authorized millage for operating purposes is 37.29 mills. The recommendation for the 1984-85 levy is 33.00 mills, 4.29 mills less than the authorized millage.

The Board of Education has proposed this millage in recognition of the responsibility to maintain and sustain an effective educational program for the community.