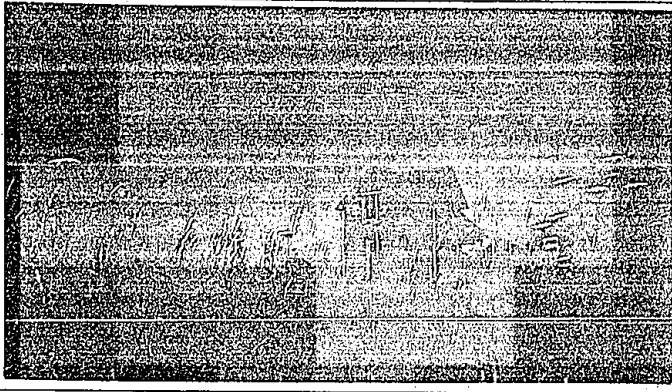
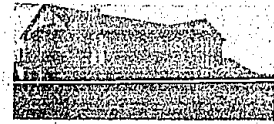




photography  
**Monte Nagler**



The wide angle lens which Monte Nagler used for this photo was purchased used many years ago. It has been performing faithfully since the day that he bought it.



Quality throughout this 4 bedroom contemporary colonial on over acre. Natural woodwork, six panel doors, and custom cabinetry. A jaw-dropping deck that is the length of the home. Downside to that deck from the family room and dining area. Family room offers a fireplace, wet bar, and plant area with light. The kitchen has many built-ins and eating area. Large first floor laundry room. The master suite has a walk-in closet and private bath.

Listing \$185,000  
Ask for "B.J." and Joe  
at REAL ESTATE ONE  
604-1085

## Used can mean a bargain

Each year, millions of new cameras, lenses, and photo accessories are sold. An almost equal number of used items are either exchanged, sold privately, buried in a drawer or discarded.

Much of this old equipment is obsolete or damaged beyond repair. But, some of it can be found hardly used and in excellent condition. Substantial savings can be made by buying used photo equipment as long as you can distinguish between bargains and junk.

The best sources for locating used camera gear are photo stores, classified ads, and local photo flea markets.

With simpler items such as tripods, flash units, and darkroom accessories (trays, measuring cups, longs, etc.), very little can go wrong so buying them is a pretty safe bet.

But with cameras and lenses, you need to be more cautious and check them out closely. Here's how to do it.

First, carefully inspect the exterior of that used camera you're interested in. A lot can be learned from it's general condition.

Some wear and tear is normal such as worn corners and marks from neckstrap fittings. Just be sure the wear isn't excessive.

BE WARNY of small dents, noticeable scratches, or any distortion of the camera body. These indicate a dropped or abused camera and serious damage could be concealed inside.

Look through the viewfinder to ensure that focusing devices, readouts and so on are all clearly visible.

The grain pattern you see on the viewfinder should be sharp from corner to corner with any blurring indicating a misalignment.

Be sure to check the battery compartment for any damage from old, corroded batteries.

Wind the advance lever and snap the shutter at all speeds. It

should operate smoothly down the scale. Open the camera back and check for cleanliness.

Then set the shutter at "B" and watch through the opened camera back as the shutter closes. There should be no sluggishness.

At different ASA settings, check the meter out by using a spare or friend's camera as a reference. Readings should be within one-half stop.

Determine if flash synchronization is OK by mounting a strobe to the camera and setting the shutter at the proper speed.

OPEN the camera back and look at the shutter with the camera aimed at a plain white surface. As you push the release, you should see the whole film gate illuminated by the light of the flash. If you don't, the synchronization is off.

Finally, focus at infinity and look through the viewfinder. Distant objects should be clearly in focus. If not, the lens mount, mirror, or focusing screen may be out of alignment.

Good used lenses can be terrific bargains. You may be able to pick up a top quality used lens at the same price (or lower) as a new, but inferior model. Even at the same price, you're better off with the used lens.

Check the lens for proper functioning of the aperture blades by setting it at each F-stop and pressing the stop down lever.

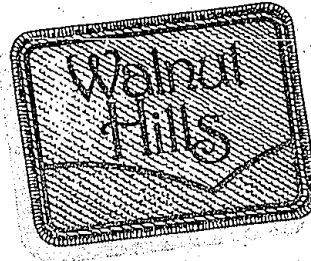
The blades should work smoothly and always display the same opening size for a given F-stop.

The lens should focus easily and the glass should be free from scratches.

Buying from distant sellers when you can't check out the equipment can be risky indeed. Better to buy locally where you can insure that your new piece of used equipment will serve you well.

©1984, Monte Nagler

## GRAND OPENING Bloomfield's Designer Label



The ultimate condominium. Open daily 12-5 PM, closed Wednesdays and Thursdays. Walnut Lake Road just West of Drake Road.  
Phone 661-0338 or 557-2080

From \$99,990

Custom built by  
**Herbert Lawson, Inc.**  
and  
*Abbey homes*

Presented by  
**HL Herbert Lawson, Inc.**



### PACKED AND READY TO GO!

- Birmingham 3 bedroom brick ranch.
- Newer up-dated kitchen, family room.
- Newer roof, furnace, and water tank.
- Land contract with 20% down.

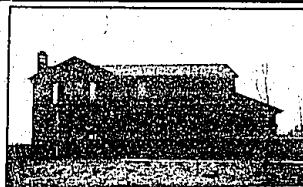
643-8500



### OPEN SUNDAY 1-4 31301 Coachlight, Birmingham

- North of 13 Mile, W. of LaSear
- 4 bedroom colonial, MBR has bath w/skylight & skylites
- Dining rm, kitchen w/ built-ins, 2.5 baths, C/A
- Family rm w/lrpl, 2nd floor laundry, prof. decor
- Cedar deck w/ Furnishings & gas grill, 2 car garage w/ DD

547-2000



### TROY

- Only the best in this Colonial
- 4 bedrooms, 2 1/2 baths, new in 1983
- Large great room with fireplace
- Top quality reflected throughout

643-8500



### FARMINGTON HILLS

- 3 bedroom Tri-Level, fireplace
- Formal dining room, library
- Skylights, 1st floor laundry
- Heated garage, fenced yard

540-0777



### "SEARCH IS OVER"

- Custom built bi-level, 6 bedrooms, 3 baths
- Family room, library, rec room
- Beautiful 1 acre landscaped lot in Bloomfield Twp.
- Liberal Land Contract Terms.

\$184,000

851-2302



### BIRMINGHAM SCHOOLS

- 4 large bedrooms, 2 1/2 baths, fireplace
- Den, All appliances, Andersen windows
- Quality built rec. room, Mint condition
- Lovely neighborhood & home!

540-8777



### ROYAL OAK STARTER HOME

- 2 bedroom bungalow, good area
- Family room with fireplace
- Basement with rec. room
- Aluminum Siding, Must See!

\$41,600

540-8777



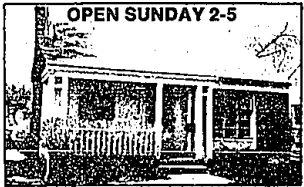
### OPEN SUNDAY 1-5

### 20778 Kennoway Circle, Birmingham

- North of 13 Mile, West of Evergreen
- 4 bedrooms, family room w/built-in BBQ
- Library w/glazed brick floor
- Step down living room, 3 baths

\$170,000

540-6777



### OPEN SUNDAY 2-5

### 1542 WASHINGTON - BIRMINGHAM

- North of 14 Mile, East of Southfield
- 3 or 4 Bedroom brick Bungalow
- Modern kitchen, 1 1/2 baths, den
- Family room, Fireplace

\$78,900

857-6700



### OPEN SUNDAYS 2-5

### 4396 Charing Cross, Bloomfield Hills

- N. of Westline W. of Adams
- Beautifully landscaped Tri-Level
- 3 Bedrooms, 1 1/2 baths, two-way fireplace from living/dining room

\$159,500

540-8777

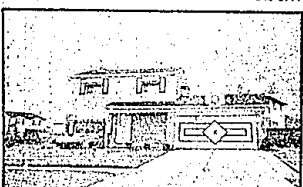


### BIRMINGHAM SCHOOLS

- 2500 square foot, 4 bedroom Colonial
- Large lot, 1st floor laundry
- Family room, Florida room w/fireplace
- Newer carpeting, excellent storage

\$50,000

557-6700



### A STEP ABOVE THE REST

- Deluxe Southfield Brick Colonial
- \$20,000 Ultra modern kitchen
- 1st floor laundry, central air
- Finished basement, family room, 2 patios

\$75,000

557-6700

SOUTHFIELD/LATHRUP  
557-6700

ROYAL OAK  
547-2000

WEST BLOOMFIELD  
851-2303

BLOOMFIELD  
544-6788



BIRMINGHAM  
540-6777

**Chamberlain**  
REALTORS

ROCHESTER  
651-3330

TROY  
643-8500



SALE POSITIONS AVAILABLE IN ALL STATES