

# Gleaning ideas while traveling

When you travel, it pays to be on the lookout for new ideas to share with your "garden family."

While in Green Valley, Ariz., I visited the home of Don and Janet (Peabody) Paray. On their patio they had a very clever bird bath. In the middle of the patio floor they had constructed a four-foot-square, two bricks high — and I assume one row

of bricks below the floor surface — which were cemented into the square pattern. Within it they had placed interesting rocks about the size of a man's fist which they had collected in their travels.

**NESTLED** in the center they had a bird bath about four inches high, which would have been the base of a very large pot, and the inside of the

basin was finished in a medium blue color.

The birds seemed to like this basin in the center of interesting rocks because cats were not interested in prowling over the many miscellaneous sharp rocks.

Another idea I am bringing home to you is to use wooden clothes pins to control the growth of branches on a small tree. Let's talk about some

old ideas — using herbs for instance. You will be wise to plant basil near tomato plants to keep insects away. Grow mint to control pest around broccoli and cauliflower.

Tansy repels fleas from pets. Take a branch of tansy and stroke the fur of your pets who might have fleas. Of course, you will cherish the yellow flowers on tansies which make nice

bouquets. And mosquitoes won't hang around either. Nasturtiums near vine crops will keep insects away.

A broken up bulb of garlic will keep problem insects away, especially in the country. Make a tea of elderberry leaves and sprinkle where you are troubled with aphids and moles. Cut in slices of Fela Napha soap and scatter it near trouble

plants being chewed by insects.

**NASTURTIUMS** are more than pretty flowers. They repel aphids from broccoli and protect potato plants. They deter squash bugs and give radishes perfect flavor.



Alice Burlingame

Michigan has passed the Gleaner Bill to allow a taxpayer engaged in agricultural operations to claim a tax credit for do-

nating surplus produce to non-profit, charitable organizations feeding the hungry or poor in their communities.

"Glean" is defined as the process of collecting leftover crops which were not harvested in the normal course of events.

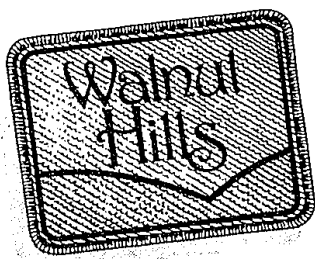
## Travelers to visit Gardens

The Community House is planning an overnight trip to The Royal Botanical Gardens in Hamilton, Ontario, June 5-6.

A prominent professional gardener will be the guide through this garden paradise. The cost, \$80 per person/double occupancy and \$103 per person/single occupancy, includes accommodations at the Park Lane Hotel in London, a gourmet box lunch, all taxes, tips and gratuities. For further information, contact Beverly Winders at The Community House, 644-5832.

## GRAND OPENING

## Bloomfield's Designer Label



The ultimate condominium. Open daily 12-5 PM, closed Wednesdays and Thursdays. Walnut Lake Road just west of Drake Road.

Phone 661-0338 or 557-2080

From \$99,990

Custom built by  
Herbert Lawson, Inc.

and  
Abbey homes

Presented by

Herbert Lawson, Inc.



## YOU CAN BE PART OF A LEGEND IN THE MAKING.



## MAPLE PLACE

A UNIQUE 2 & 3 BEDROOM CONDOMINIUM COMMUNITY IN WEST BLOOMFIELD, FROM \$79,900.

MAPLE RD. 500 FT. WEST OF DRAKE  
FOR INFORMATION CALL 559-7954/661-2650  
CLASSIC CONSTRUCTION CORPORATION

ANTIQUES  
THERE'S A LOT GOING ON IN  
Observer & Eccentric  
classified  
ads



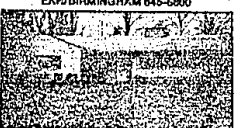
**IN TOWN BIRMINGHAM**  
Completely renovated 2 1/2 story home includes 4 bedrooms, 2 full baths, fireplace in living room, gourmet kitchen with JennAir, deck off master bedroom, 2 car garage, and price reduced to \$127,500.  
EKR/BIRMINGHAM 645-5800



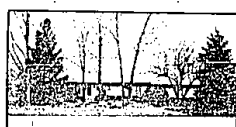
**WEST BLOOMFIELD LAKESIDE**  
4 bedroom ranch with curved staircase to walkout lower level. Step up formal dining room, cathedral ceilings, 3 1/2 baths, gourmet kitchen, fireplace in family room, custom wet bar in living room & 100' frontage on Middle Straits Lake. \$239,900  
EKR/BIRMINGHAM 645-6800



**EVERYTHING IS BEAUTIFUL**  
from this ranch atop a 2 acre private setting in West Bloomfield. 3 1/2 story family room overlooking heated INGROUND POOL with cabana, 3 bedrooms, 4 car garage, 2 sheds, 2 fireplaces, huge kitchen & much storage. \$162,500  
EKR/BIRMINGHAM 645-6800



**TROY RANCH**  
3 bedroom home on country setting with Birmingham schools, updated kitchen, beamed ceiling, bay window in family room, fireplace in living room, extra insulation, 2 1/2 car attached garage, plus washer/dryer included. Reduced to \$98,500  
EKR/BIRMINGHAM 645-6800



**COZY RANCH** in popular Bloomfield Hills sub. Features 3 bedrooms, 2 1/2 baths, family room with full brick wall fireplace and spacious deck. Burglar alarm, 2 1/2 car garage. \$137,500 BR  
EKR/W. BLOOMFIELD 655-9100



**LAKE PRIVILEGES** on Meadow Lake. 3 bedroom brick ranch on treed lot with circular drive, 1 1/2 baths, family room, Florida room. Fireplace in living room and family room. \$109,900 HA  
EKR/W. BLOOMFIELD 655-9100



**BEAUTIFUL BLOOMFIELD HILLS**. Custom built 2 story with 4 bedrooms, 2 1/2 baths, kitchen with built-ins, Central Air, family room with fireplace. Move-in ready! \$229,900 ST  
EKR/W. BLOOMFIELD 655-9100



**FABULOUS!** This home is very special! 3 bedroom ranch with walk-out lower level to deck & jacuzzi. Family room, 3 fireplaces, 8 1/2 baths, library, 2 kitchens, sauna, lake privileges, unique wooded lot. \$209,000 TR  
EKR/W. BLOOMFIELD 655-9100



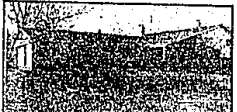
**ORCHARD LAKE WOODLANDS SUB**  
New home by Woodbridge Homes, Inc., Tudor exterior with contemporary flair for open interior space. 4 bedrooms, sunken family-living room, deluxe kitchen with sun garden window, energy efficient features. \$279,900 CH  
EKR/MAPLE 642-6500



**BIRMINGHAM SCHOOLS**. 4-5 bedrooms. Family room with glass doored fireplace. Extra closets & insulation. New roof. Aluminum siding. Screened porch and more. Call for appointment. \$119,500 PA  
EKR/MAPLE 642-6500



**SUMMER-WINTER PARADISE**  
Enjoy swimming, golf, skiing. Spacious living room with beamed ceiling. Double entry master bedroom with walk-in closet & dressing room. Great Home & Area. Many extras. \$92,900 ST  
EKR/MAPLE 642-6500



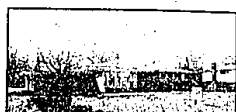
**MOVE-IN CONDITION**  
Recent redecoration including carpet, makes this Vernor Estates home a great value. Four bedrooms, 1st floor laundry, library, family room and walkout lower level. \$214,900 AR  
EKR/MAPLE 642-6500



**GREEN SPRING** in this amazing 3 bedroom, 2 bath Troy Brick Ranch on professionally landscaped lot. Artistically decorated family room, dining room, Central air, burglar alarm system, sprinkler system. Call Today for Features Galore! \$84,900.  
EKR/TROY 689-3600



**SIMPLE ASSUMPTION** at 7% available on this 4 bedroom, 2 1/2 bath tri-level situated on beautiful rolling country lot in Troy. Offers family room with natural fireplace and den. Paneled family room. Asking only \$89,900.  
EKR/TROY 689-3600



**BIRMINGHAM SCHOOLS!** Custom built Ranch in Troy's finest subdivision. Has 3 bedrooms, 2 baths, family room with natural fireplace. Updated kitchen. Decorated in Earth tones. Professionally landscaped, very private back yard. Only \$129,900.  
EKR/TROY 689-3600



**INGROUND POOL!** Enjoy summer more than ever in this attractive Troy Brick Tudor Colonial. 4 bedrooms, 2 1/2 baths, formal dining room and library. Bay window in kitchen. Gas grill. Central air. Absolutely Outstanding! \$107,900.  
EKR/TROY 689-3600



**DESIGNED WITH DISTINCTION**  
Elegant 4 bedroom 2 1/2 bath brick colonial offers beautiful family room w/fireplace and wet bar, formal dining room, library and long list of luxury amenities. 3100 sq. feet. Located in prestigious Farmington Hills sub. Priced to sell.  
EKR/MIDWEST, INC. 477-0880



**CLASSIC BEAUTY**  
Immaculate 3 bedroom brick ranch offers huge, modern kitchen, family room w/fireplace, 2 1/2 baths, large deck and much more, on a lovely large lot backing to commons in Farmington Hills executive subdivision. Reduced to \$118,500.  
EKR/MIDWEST, INC. 477-0880



**CITY OF FARMINGTON**  
Spacious 4 bedroom, 2 1/2 bath colonial offers formal dining room, family room w/fireplace, full bathroom attached garage and great family sub with 40 acre commons. Priced far below market at \$97,500.  
EKR/MIDWEST, INC. 477-0880



**HOUSE BEAUTIFUL**  
Describe this most elegantly decorated brick English tudor in prime Farmington Hills sub. Offers 4 or 5 bedrooms, formal dining room, family room w/fireplace, majestic master suite w/cathedral ceiling & skylight & more. Priced to sell at \$124,900.  
EKR/MIDWEST, INC. 477-0880



**BIRMINGHAM OFFICE**  
1955 S. Woodward Ave.  
645-5800

**WEST BLOOMFIELD OFFICE**  
6335 W. Maple Road  
655-9100

**MAPLE OFFICE**  
3605 W. Maple at Lusher  
642-6500

**TROY OFFICE**  
1851 E. Watties  
689-3600

**FARMINGTON OFFICE**  
31716 Grand River  
477-0880

