

exhibitions

SOMERSET MALL

Thursday, June 14 - Members of the Birmingham Society of Women Painters and the Birmingham Sculptors Guild have a show of their works through June 21. Opens Thursday with a "Celebrity Paint-Off" with TV personalities Dwayne X. Riley, Erik Smith and Ronnie Clemmer painting still lifes. Show jurors were Ray Foy, Fleming and Jay Holland. Artists in attendance throughout the show. Open during regular mall hours, Big Beaver and Coolidge, Troy.

PIERCE STREET GALLERY

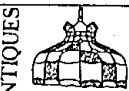
Friday, June 15 - "Faculty/Vision" consists works by members of the photographic department faculties at Center for Creative Studies, Cranbrook and Wayne State. Continues through July. Reception to meet the artists 7-9 p.m. Friday. Regular hours are 11 a.m. to 5 p.m. Wednesday-Saturday, 217 Pierce, Birmingham.

OAKLAND COUNTY GALLERY

Friday, June 15 - Sculptures and paintings by Kephart Tazian of Birmingham. He's on the OCC Orchard Ridge art faculty and has had many one-artist shows. Reception to meet the artist 6-8 p.m. Friday. Continues through July 15. Hours are 9 a.m. to 4 p.m. Monday-Friday, Executive Office Building, 1200 North Telegraph, Pontiac.

PAINT CREEK CENTER FOR THE ARTS

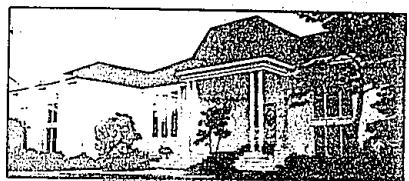
Saturday, June 16 - "Rock, Paper & Scissors," an unusual show of functional, decorative toys and kites, continues through Aug. 4. Reception 8-9 p.m. Sunday. For summer gallery hours, call 651-4110, 407 Pine, Rochester.



Observer & Executive
classified
ads

Pomeroy - Realtors
559-3344

DRASTICALLY REDUCED



PROVINCIAL MODEL
Built with the finest materials and craftsmanship. Outstanding Italian marble foyer with unique skylight. This quad level has over 5500 sq. ft. of living space with multi-level wood decks. Separate suite excellent for in-laws or hobby plus 5 bedrooms with large closet space. 4 full baths, 2 half baths, 2 magnificent Italian marble fireplaces. Almost an acre lot with all landscaping, pool, sprinkler system and concrete circular drive. Cooperative financing. WABEK NORTH Long Lake Rd. to Wakefield Lake Drive East (Between Franklin Rd. and Middlebelt) to Indian Summer.

MALCOLM LEVENTEN CORP.

988-0110 559-5492

OPEN SUNDAY 1-5 P.M. or by APPOINTMENT

Between the Lakes

A private community of just twelve luxury lakefront townhomes, situated on a 2.3 acre wooded site near the sandy shores of beautiful Long Lake. Phase I. Two bedroom, 2 1/2 bath units at \$129,900.



Features:

- Louis N. DesRosiers Design
- Pella Windows and Doorwalls
- Bigelow Anso-X Carpeting
- Sloped Glass Ceilings
- Ceramic Tile
- Heat Circulating Fireplace

Saturday and Sunday
Noon till 6:00 P.M.
Weekdays
10:00 till 6:00 P.M.

363-5780

Between the Lakes

8617 Cooley Lake Road/Union Lake, Mich. 48095 (313) 363-5780

ROBERT L. KIDD ASSOCIATES

Saturday, June 16 - "Wildlife Physics" with Upper Peninsula artists Patrick St. Germaine, Ray Hibel and Rex Spashoff focuses on nature and its mysteries. Opening reception 3-6 p.m. Saturday. Hours are 10:30 a.m. to 5:30 p.m. Tuesday-Saturday, 107 Townsend, Birmingham.

GALLERY BIRMINGHAM

Monday, June 18 - "Summer Slew," a mixture of internationally known and local artists continues through June. Hours are 10 a.m. to 5 p.m. Monday-Wednesday, until 8 p.m. Tuesday-Saturday, 223 S. Woodward, Birmingham.

SCHWEYER GALD GALLERIES

Wednesday, June 20 - "Steel Menhins" by Jay Leikowitz, a local sculptor with a worldwide scope, continues through July 25. Reception to meet the artist Wednesday 6-9 p.m. Hours are 11 a.m. to 5:30 p.m. Tuesday-Saturday, 330 Hamilton Row, Birmingham.

YAW GALLERY

Nancy Yaw, back at the gallery after a too-long hiatus, is showing a collection of works in metal, fiber and clay which have been associated with her for a long time. Continues through July 5, 550 N. Woodward, Birmingham.

CLARKSTON

Saturday, June 16 - "Realism in Nature: 2 points of view," featuring animal sculptures by Sharon Sommers and watercolors by Pam Kessler. Both are meticulous in their attention to detail. Sommers has made many trips to Africa to photograph for her sculpture. Will be held noon to 5 p.m. Saturday and Sunday at McGillicuddy's Restaurant,

59 S. Main, Clarkston.

COACH HOUSE ART GALLERY

Photographs of Detroit by Ruth Lee continue through the month. In many instances, the intrepid photographer was one jump ahead of the bulldozers. Hours are noon to 5 p.m. Wednesday-Saturday, 7828 Van Dyke Place, Detroit.

HABATAT GALLERIES

Recent work by Dale Chihuly will be on display to July 7. Chihuly is one of the fine contemporary American glass artists. The gallery is at 28235 Southfield, Lathrup Village.

VENTURE GALLERY

Clay pots by Harvey Sadow will be on display to July 7. The gallery is at 28237 Southfield, Lathrup Village.

PONTIAC ART CENTER

"Studio Artists of Pontiac" continues through July 7. This is a group show of works by more than 15 artists who have studio loft space in the city, 47 Williams, Pontiac.

DETROIT INSTITUTE OF ARTS

"Passion and Precision: The Photographer and Grand Prix Racing 1894-1984" documents through photographs

the people, cars and events of racing's colorful past. Open weekend only in the Albert and Peggy de Salis Gallery of Photography, 9:30 a.m. to 5:30 p.m. Tuesday-Sunday.

ARNOLD KLEIN GALLERY

"The Taste of Arnold Klein" is a show of prints and drawings which this well-respected authority addresses. Continues through July 14. Hours are 11 a.m. to 5:30 p.m. Tuesday-Saturday, 4510 N. Woodward, Royal Oak.

ANN ARBOR ART ASSOCIATION

"Beach Collection" by Barbara Dorchon is a mixed media show with a contemporary approach featuring drawings, assemblages and photographs. 117 West Liberty, Ann Arbor.

RUBINER GALLERY

All craft show includes functional and sculptural works by artists from many parts of the country. Continues through June. Hours are 10 a.m. to 5:30 p.m. Monday-Friday, until 5 p.m. Saturday, 7001 Orchard Lake, Suite 430A, West Bloomfield.

FIN ART GALLERY

"Figures in Art" is a show of works by gallery artists - Pat Boyer, oils; Lillian Finikin, mixed media;

Charlotte Pyra, watercolor; and Harold Altman, oil. Open weekend only in the Albert and Peggy de Salis Gallery of Photography, 9:30 a.m. to 5:30 p.m. Tuesday-Sunday.

CAIROI ART ASSOCIATION

Recent work by Nancy Plesner is both two and three dimensional and deals with images of bowling and log cabins together. Continues through June. Hours are 11 a.m. to 5 p.m. Tuesday-Saturday, 810 Fisher Building, Detroit.

DETROIT FOCUS GALLERY

"Installations/Outdoor Sites" is being held simultaneously in Chene Park and the gallery. The park is designed as a "festival park" for the arts and Detroit Focus has been given one acre on which to install 15 temporary

installations. Open weekend only in the Albert and Peggy de Salis Gallery of Photography, 9:30 a.m. to 5:30 p.m. Tuesday-Sunday.

CANTON LEMBERG GALLERY

Recent work by D.K. Bell is a collection of paintings. To schedule an appointment, call 651-4110. Gallery hours are 11 a.m. to 5 p.m. Tuesday-Saturday, 133 N. Woodward, Birmingham.

TROY MUSEUM

"Tools of the Trade" looks at the world of the 19th-century blacksmith and silversmith: the cooper, the cobbler and the jeweler. Hours are 9 a.m. to 5:30 p.m. Tuesday-Saturday, and 2-4 p.m. Sunday, 80 West Wadsworth, just west of Livernois, Troy.

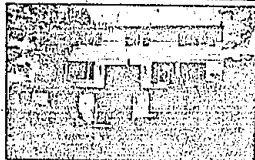
THE GALLERY... AT MAINSTREET PLACE

Watercolors by Linda Wagenberg of Birmingham are on display through June 17. Hours are 10 a.m. to 5 p.m. Tuesday-Sunday, 903 N. Main, Royal Oak.

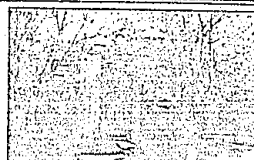
Merrill Lynch Realty



LET'S TALK ABOUT THIS Family room conversation pit; double jacuzzi in master suite; gourmet/catering center with all appliances: sub-zero, Jenn-air, food center 1990 construction. 626-9100 \$235,000



IMAGINE THIS Green Lake waterfront property will be even more lovely with your special decorating touches. Walkout lower level, 4 bedrooms. 651-9100 \$159,950



CONTEMPORARY CONDO. Superb Southfield 2 bedroom unit is absolutely charming inside and out! Backs to woods, bay-windows, window seated master bedroom. 648-6000, \$78,500



FOCUS ON FARMINGTON HILLS. Builder's own home with attention to every detail. Bay windows, 6 panel doors, choice woodwork, extra insulation, darkroom! 626-9100, \$124,900



LAND CONTRACT. Fieldstone colonial nestled among the trees. Beautifully maintained 3 bedroom interior bay-windowed living room. 30% down; 5-yr.; 11%. 626-9100 \$102,900



LOOK WHAT CAN HAPPEN when people really care! This colonial just glows with well-being! Central air, patio, bowed window, continually updated and upgraded. 650-6000, \$23,600



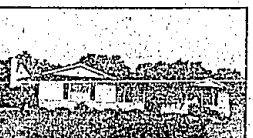
DOUBLE DECKER! Two new decks provide great lake views from this completely remodeled Middle Street lakefront home. Best deal on the water! 651-9100 \$94,500



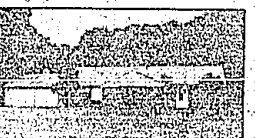
BE THE FIRST TO CALL! Now construction in West Bloomfield Woods ready for personal decorating has just been reduced! Great area for successful young families. 626-9100 \$39,900



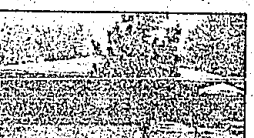
ALL THE BEST! Those seeking quality will find it in every detail in this West Bloomfield 4 bedroom tudor. Extra large lot, tastefully customized, mint condition. 626-9100 \$169,900



CHAMPAGNE TASTE! Stunning bright contemporary nestled on park commons. Beautiful ceramic foyer, 3 bedrooms, plush carpeting, attractive financing. 626-9100, \$124,900



STORYBOOK CHARM. Custom built 3 bedroom ranch on large treed lot. Wet plaster, fenced yard, tiled foyer. Exceptional price! Immediate occupancy. 626-9100 \$69,900



OPEN SUN. 11 a.m.-2 p.m. 1675 MAD-DY LANE, N. of Orchard Lake, W. of Casa Lake. Very fine brick ranch on Sylvan Lake canal. West Bloomfield schools. 651-9100 \$93,500



ROLLING OAKS. Exciting tudor colonial with beautiful wooded backdrop features dramatic "free form" kitchen, kitchen. Blended rate available. 626-9100 \$124,900



OVERLOOKS GOLF COURSE. Spectacular 4 bedroom brick in great neighborhood with space for the kids to play. Updated kitchen with large breakfast area. Immediate occupancy. 626-9100 \$94,900



THE BEST OF TWO WORLDS. In-town convenience plus overgrown privacy. In this spacious-up north Royal Oak brick ranch. 3 bedrooms, country kitchen. 648-6000 \$93,900

BIRMINGHAM BLOOMFIELD HILLS WEST BLOOMFIELD DETROIT FARMINGTON HILLS FARMINGTON HILLS

646-5000 647-5100 626-9100 659-0900 650-6000 651-9100

OPEN MONDAY-FRIDAY 12-5 P.M. SATURDAY 10-5 P.M. SUNDAY 1-5 P.M.