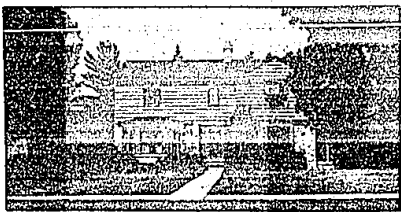




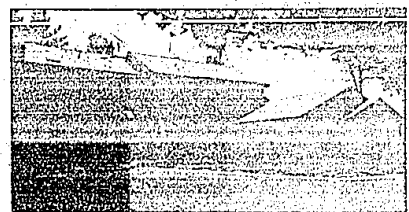
Merrill Lynch Realty



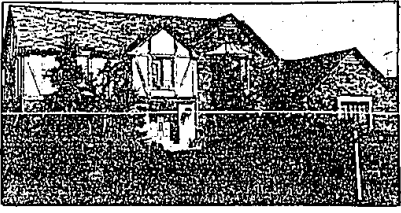
QUIET AREA OF PRESTIGE HOMESITES. Includes Orchard Lake privileges plus your own Inground pool! Charming Cape Cod, terrific family home. 3 fireplaces, rec room with wet bar, more! 851-8100. \$159,900.



BLOOMFIELD VILLAGE. Extra lot with extra-special fieldstone/wood colonial. Decorator perfect interior designed with entertaining in mind. Florida room overlooks pool. OPEN SUN. 1-5. 389 Westwood. 647-5100. \$184,900.



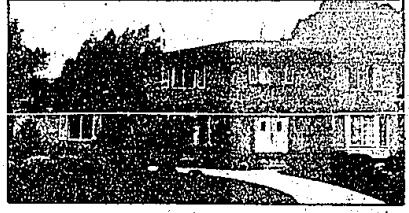
EXUBERANT AND ELEGANT. Builder's own sophisticated contemporary with soaring two-story foyer, custom cabinetry, master suite Jacuzzi. Beautiful pine grove setting with Walnut Lake privileges. Reduced. 851-8100. \$250,000.



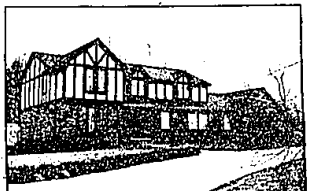
HEIRLOOM QUALITY TUDOR. Model-perfect 10 room design sparked by designer coordinated wall coverings, ceramic entry, stained woodwork, gracious curved stairway, island kitchen.



EXECUTIVE HOME! Prime location for young executive/professional family. Bay-windowed dining room, Jenn-Aire kitchen, master bedroom suite, library in Class A Move-In Condition. 689-8900. \$179,900.



HIGH ON A HILL. A spacious and airy bay-windowed colonial, with terraced and stone-walled beautifully landscaped setting. Country kitchen form a gourmet's dream; alcoved living room, cathedral ceiling family room! 646-6000. \$239,900.



OPEN SUN. 1-4 PM. 7285 Inkster, S. of Maple. Positively elegant custom Tudor. Atrium, circular stairway, Caribbean tub, 4 bedrooms, library. Stunning! 626-9100. \$169,900.



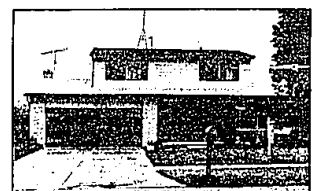
OPEN SUN. 2-5 PM. 5840 Oak Bluff; Orion to W. on Dutton to N. on Paint Valley. Country French manor on gracious acre-plus grounds; vaulted ceiling, leaded glass doors - an absolutely charming American Renaissance! 651-8850. \$284,000.



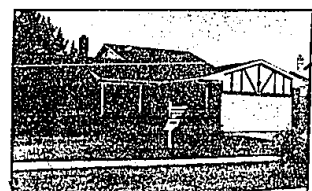
OPEN FLOOR PLAN highlights impressive brick Colonial in premium location. 6 bedrooms, quality decor, recreation room, more. 647-5100. \$125,000.



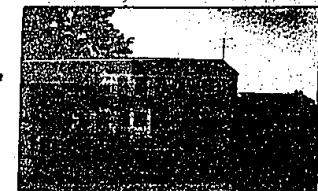
NOTTINGHAM FOREST. Custom built 4 bedroom Southern Colonial, with walk-out recreation area, lovely lot sloping to brook. Move-in condition 646-6000. \$170,500.



PRICED TO SELL! With extras galore! Freshly painted 3 bedroom family colonial. finished rec room, walk to Troy schools. Call for details! 689-8900. \$76,900.



EXCEPTIONAL. QUADLEVEL. Very well landscaped, very well maintained with extra large family room and custom shuttered window treatments. 851-8100. \$99,000.



GREAT for growing family in spacious 4 bedroom Colonial in prime area of Potomac Green of West Bloomfield. Central air, neatly maintained. 626-9100. \$109,900.



SPECIAL EFFECTS. Beautiful new ceramic kitchen with doorwalls opening to bi-level decking, professionally landscaped yard leading to wooded area. Troy. 689-8900. \$104,900.



COMFORTABLE TRI-LEVEL in family-oriented Fox Hills. Nestled on get-away-from-it-all treed lot with private patio. SIMPLE ASSUMPTION. 646-6000. \$104,900.



CITY OF BLOOMFIELD HILLS. Approximately one acre, new custom kitchen, slate foyer, quality appointments. 5 bedrooms plus library. 647-5100. \$179,000.



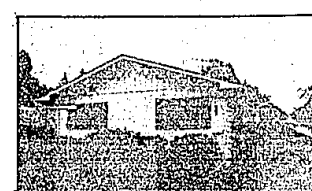
FRANKLIN RIVER ravine paradise and nature abound in spectacular two-story with quality appointments. Includes fresh decor, heat-o-lector fireplace, hot tub and spa. 625-9100. \$124,500.



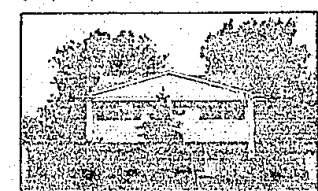
\$10,000 MOVES YOU IN! 3 bedrooms, basement, cathedral ceiling, fireplace, wonderful screen-enclosed porch for summer enjoyment. 646-6000. \$85,000.



LAND CONTRACT TERMS! Low eling contemporary ranch with Bloomfield Hills schools. Motivated owner will consider all offers. 3 bedrooms, family room, fireplace! 626-9100. \$74,900.



STOP, LOOK, LISTEN! Perfect starter/retiree maintenance free ranch with nearly new central air and furnace. Birmingham schools. New low price! 646-6000. \$49,900.



WEINBERGER COLONIAL in the heart of Rochester's Stratford Knolls. Energy saving insulation, covered deck and patio. OPEN SUN. 1-4. 50 Clair Hill. 651-9550. \$69,200.

BIRMINGHAM	BLOOMFIELD HILLS	FARMINGTON HILLS	TROY	ROCHESTER	WEST BLOOMFIELD
646-6000	647-5100	626-9100	689-8900	651-8850	651-8100

OPEN MONDAY, FRIDAY, SATURDAY, SUNDAY, HOLIDAYS