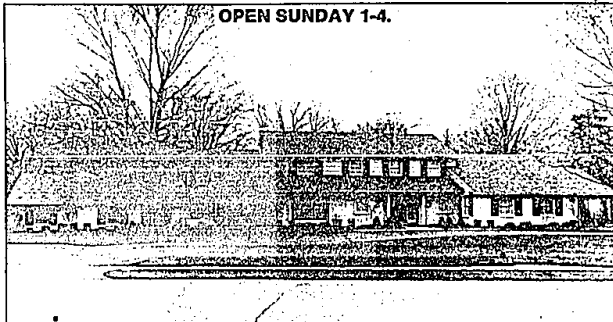


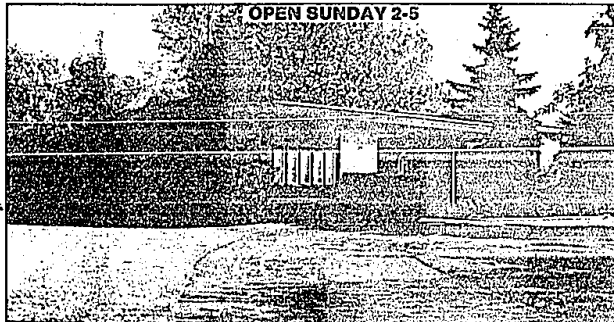
OPEN SUNDAY 1-4.



BLOOMFIELD VILLAGE

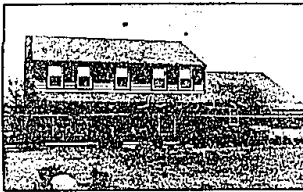
Magnificent home situated on two lots in the heart of the Village, with third lot included in the price. Master suite features adjoining study plus his and hers bathrooms. Sunny sitting room, 2 family rooms and 4 fireplaces. Spacious kitchen offers every convenience. \$525,000. 850 N. Glangarry, N. of Maple and W. of Cranbrook.

OPEN SUNDAY 2-5



OPEN CONTEMPORARY RANCH

Beautifully built! Very large home over 3000 square feet. Custom features, loads of storage, newer roof, lovely lot with specimen trees and exceptional room sizes. Hugo master suite with a full bath. Must see to appreciate! \$209,000. 3474 Sutton Place, S. of Quanton and E. of Lahser.



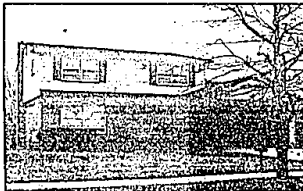
INDEPENDENCE COMMONS

Beautiful Colonial reflecting strong pride of ownership. First floor laundry, library and family room. Dining room has warm, wood flooring and country kitchen offers large bay window. Assumable mortgage. \$119,900. COS-57875



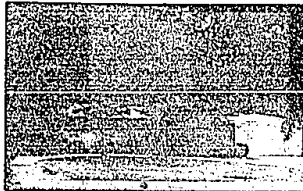
ENTERTAINERS DELIGHT

Award winning kitchen design, excellent traffic pattern, large distinctively styled family room with picturesque views. Also 1st floor laundry. Great family area and close to everything. \$114,900. STR-56062



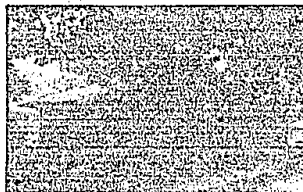
WELL BUILT SOUTHFIELD HOME

Land Contract. All appliances, including washer and dryer too! New central air conditioner in 1983, newer energy saver hot water heater, hardwood floors and fireplace in family room. \$78,000. SEK-94671



QUALITY CUSTOM RANCH

Lovely treed area. Four bedrooms, 2 1/2 baths, new roof, air conditioning, basement, skylight and circular drive are only a few extras you will find in this newly listed Southfield home. \$84,000. BIE-67399



A BARGAIN HOME!

Excellent home for young family. Finished basement, beautifully done rec. room with 1/2 bath. Brick main, treed lot and high assumable mortgage can be expanded with approval. Newly listed at \$47,900. LEN-



RALPH MANUEL

ASSOCIATES, INC. • REALTORS

1821 W. Maple, Birmingham

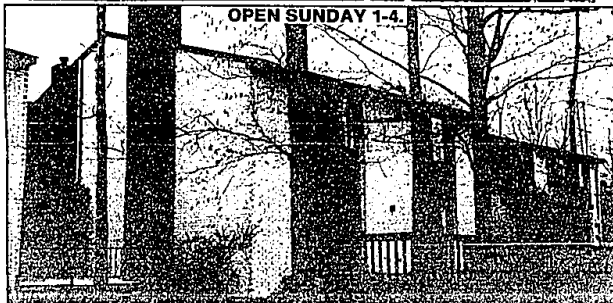
647-7100



MEMBER OF TRANSLO RELOCATION SERVICE
OFFERING COMPUTERIZED MULTI-LIST SERVICES

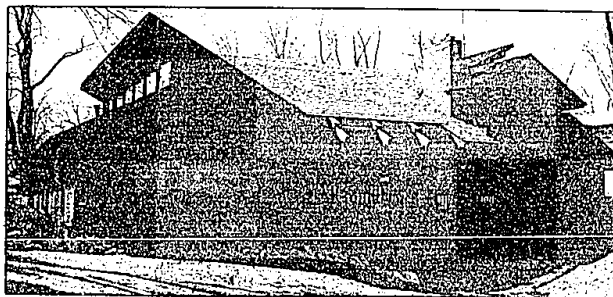


OPEN SUNDAY 1-4.



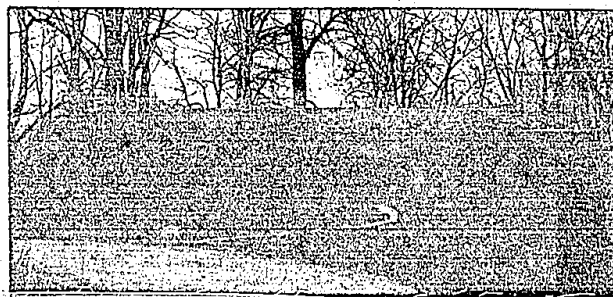
A VIEW FOR ALL SEASONS

Spacious traditional decor - 3 bedroom Condo has family room, 1st floor laundry, full basement, private courtyard entrance and large deck for spectacular view of woods and Weebek third green. Large master suite, good storage and 3rd bedroom could be a guest suite. ASSUMABLE MORTGAGE! \$199,900. 1936 Tuckaway, S. of Long Lake Rd., E. of Middlebelt and E. off Weebek Lake Drive.



EXQUISITE CONTEMPORARY

With all the amenities of home plus the pleasure of an all sports lake and an indoor swimming pool, exercise room, sauna, beautiful view with a lot of glass lakeside. Family room offers conversation piece fireplace, 12 ft. long wet bar, walk-out to lawn. \$495,000. DOW-54593



WOODED SECLUSION ON SPRING FED POND

Rustic French Country decor appeals to contemporary and traditional tastes. Spaciousness lends itself for easy entertaining with guests and yourself. Gourmet kitchen includes everything. Boreded glass doors, wood moldings, decorator wallpaper throughout, wet bar, wine cellar, whirlpool room, 3 fireplaces and a lot. Separate unfinished 2 bedroom in-law suite with outside entrance. Reduced to \$247,000. BLO-63327

OPEN SUNDAY 2-5



BRIARBANK RANCH CONDO

Only one unit left in this small charming complex offering 2 bedrooms, 2 full baths, full basement, 1st floor laundry and 2 car garage. Lots of closets and kitchen appliances included! \$85,000. 22433 W. 12 Mile Road, W. of Lahser and N. side of 12 Mile.



LOOK AT THESE TERMS!

Land contract terms - 20% down for 5 years. An intelligent alternative to renting offering you a guarantee of security, comfort and convenience. Newer condo features 2 bedrooms, 2 baths and 2 car garage. \$80,000. THN-57279



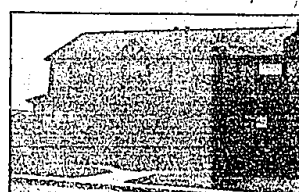
LARGE CONTEMPORARY CONDO

Enjoy condo living in this 3 bedroom, 2 1/2 bath home with a fireplace family room with wood insulated patio door leading to a landscaped courtyard. Low association fee includes gas! \$78,900. MAE-53500



COUNTRY SETTING

Custom 3 bedroom ranch, built in 1974, featuring family room with fireplace, crown moldings, 6 panel doors and hardwood floors! Farmington Schools and a lovely treed lot! Reduced to \$55,500. WHK-52928



UNBEATABLE FINANCING!

Just \$2,900. down to qualified buyer with seller paying all mortgage closing costs. Charming 2 bedroom Townhouse with fireplace, neutral decor, basement, plus pool and tennis court. \$55,900. LOL-55882