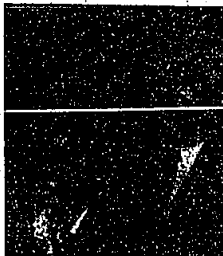


Mr. and Mrs. Robert E. Smith, former residents of Bloomfield Hills and now residents of Morristown, N.J., announce the engagement of their daughter Karen Irene to Michael C. Ayoub, son of Mr. and Mrs. Carl J. Ayoub of Warren.

The bride-to-be is a graduate of Lahser High School and Valparaiso University where she earned a degree in accounting. She is now employed with a CPA firm in Southfield. Her fiancé graduated from Fitzgerald High School and attended University of Detroit. He is employed with an engineering firm in Troy. A September wedding is planned.



Sessions designed for single parents

The Women's Resource Center of Schoolcraft College continues its programs for single parents, both men and women. Through classes and networking sessions SPIN (Single Parent Instruction Network) programs are designed to help single parents deal more effectively with their existing resources.

All classes are given in the evenings

Child care information available

Oakland County 4Cs (Community Coordinated Child Care) will provide free information and referral to parents seeking a child-care center or a family day-care home in Oakland County. The non-profit organization is funded, in part, by the Department of Social Services and Oakland County. Inquiries will be taken by Joyce Beaumont, 4C coordinator, at 858-5140.

Republican Club to meet Tuesday

The Republican Club invites guests to its meeting at 8 p.m. Tuesday in Botsford Inn, on Grand River west of Eight Mile Road. Guest of honor for the evening will be Oakland Circuit Court Judge Steven Andrews, running for re-election on the non-partisan portion of the ballot. Guest speaker for the evening is Spence Abraham, chairman of Michigan State Republican Party. His topic is "The Need to Work as Hard Now as in the '80s." There is no charge.

Stage Door Dance Studio

559-1462

Now Enrolling:

- Jazz • Tap
- Classical Ballet
- Contemporary Ballet
- Modern • Tumbling
- Break Dancing

NEW!

TAPPERCISE

Southfield Road
Just Northwest of 12 Mile

SAVE \$ ON ROLL TOPS

Pine - 32 1/2 x 54 x 43 1/2 Drawer Desk **\$387.99**
Was \$429.99 NOW

Aspen - 32 x 19 x 41 1/2 Drawer Desk **\$168.99**
Was \$187.99 NOW

Other styles & sizes available at sale prices

The YANKEE CARPENTER

New Location!

1751 S. Telegraph Road
Bloomfield Hills 338-0441

Alex's family Dining

COME IN AND GET ACQUAINTED

Beat the Heat with a Summer Salad!

- 18 Different Salads
- Steaks • Seafood • Chop • Oyster Stacks
- Homemade Soups Daily • Potato Salad
- Slimo • Tristo • Better Chicken Dinner
- Turkey Salad
- Shrimp Salad
- Vegetarian Salad

18500 Telegraph Rd. (Between 5 & 6 Mile Rd.)
Open 24 Hours 538-8420 COMPLETE CARRY OUTS

Adults take to the woods for 'Ultimate Workout'

A co-ed fitness experience for adults called "The Ultimate Workout" in Camp Nahew in Ortonville is offered in a three or five-day package from Sept. 7-11.

Camp just isn't for kids anymore," said Gail Greenfield, director of the camp who is president of Gail Greenfield Productions, a company specializing in exercise programs. "I've designed this fitness camp for adults who wish to improve their fitness level in an atmosphere of health, fun and recreation. Classes are designed with all fitness levels and goals in mind. We can

accommodate every one from the novice to the serious athlete. The food is healthy, fresh and fabulous."

Lectures in camp will help the participant to understand the individual's potential, design reasonable goals and challenge performance.

"All the things kids enjoy in camp are there, sun-bathing, nature walks, fishing, canoeing, campfires, movies and a social director. We've added dance parties, massage workshops and massages available from a professional," she said.

Her staff includes Lois Silverman, fitness director for Hamilton Place Club and a choreographer for Arlo Jazz Company; and Allison Bussey, winner of several state water skiing competitions and developer of a body reshaping program using hand and leg weights.

CAMP STAFFERS Randy Bulla is a National Class Runner, fitness consultant and aerobic teacher at Men's Health Club, Jewish Community Center.

Andrea Bernstein and Helaine Rodin-Keller come to The Ultimate Workout from Fitness, an exercise center on Northwestern Highway in Farmington Hills.

Of the two, Greenfield says, "Their extensive training has enabled them to produce one of the most polished exercise programs in this area of the country. Their classes generate an atmosphere of pride and accomplishment, a feeling shared by all who attend."

All teachers will be available for consultation and direction towards attaining positive performance.

All inquiries are taken by Silverman, in Hamilton Place, 646-8990.

Gardeners will sponsor landscape design course

A landscape design study course, sponsored by Federated Garden Clubs of Michigan, will run Tuesday through Thursday, Oct. 2-4, in Mercy Concerence Center, Farmington Hills.

"We think this will be an excellent opportunity for the general public to enroll in a course that will be instructed by several well known and respected individuals in the field," said Margaret Mayer, a member of Hill and Dale.

Garden Club, one of the participating sponsor-clubs in the federation.

Among the speakers and workshop leaders are Charles Caras, director of Nichols Arboretum at University of Michigan, and Peter Pollack, associate professor at University of Michigan, of Principal-Pollack Design Associates.

Others taking part are Michael J. Dul, holder of the Award of Merit from American Society of Landscape Architects, from Michael J. Dul & Associ-

ates; and David Reagan from John Grism & Associates.

Others are Allen Field, author of "Community Land Use Game," and Gerald Lax, associate professor of urban planning school architecture and urban planning at University of Michigan.

CHAIRMAN for the three day event is Elaine Gundersen, also a member of Hill and Dale Garden Club. Her committee is made up of members from See and Sod Garden Club, Pleasant Ridge Garden Club, North Farmington Garden Club, Lone Pine Garden Club, Livonia Garden Club, Sunshine Garden Club, and other Hill and Dale members.

Inquiries will be taken by Jo Zimmerman, a member of Pleasant Ridge Garden Club, at 543-0461.

Tots accepted in nursery

Mayfair Cooperative Nursery continues to accept students for its afternoon preschool and pre-kindergarten enrichment program which begins this fall. The school is located at 30450 Farmington Road.

The aim of the co-op is to provide the parent a role in the daily routine of the school.

"This helps create a comfortable bridge from home to school for the child and provides the parents with added insight into the development of the child," said Kathy Bricker, spokeswoman for the school.

Suzan Tapp will take inquiries at 626-1579.



WATCH FOR OUR
GRAND OPENING

The Dance Co.
featuring
Dancewear, plus

29287 Southfield Rd.
559-9489

Thinking of Selling Your Jewelry?

SEE **ROBERT GALE**
Fine Jewelry
in Birmingham
725 S. Adams Rd.
N. of 14th Mile
644-6650

MORGAN EXCHANGE, INC.
Pianos & Organs • Sales • Service • Rentals

CLAWSON • 288-1750
14 Mile Road & Livonia
LIVONIA • 427-5080
Midfield Rd. S. & 6 Mile

SCHIMMEL • MASON • HAMLIN • CHICKERING • KNABE • EVERETT • BARNICK • HAMMOND ORGAN

Rent A Piano - '39 month
With option to buy. All rent applies toward purchase.

LINGERIE FASHION SHOWS

featuring **VELMA BUCKLES**
Belle, Danbury, Conn.

Fashions by Marteen G

MONDAY 7:30 p.m.
TUESDAY Noon
THURSDAY 1 p.m.
King-Size Cookbooks
Major Credit Cards
Reservations

425-5520

MITCH HOUSEY

29400 Telegraph Rd. 1st Floor
Opposite the end of the road

Free \$150 Gift*
LOSE WEIGHT PERMANENTLY

Join the many satisfied patients of Weight Loss Health Center, Inc. Learn from the staff of doctors and nurses the secret of losing weight and keeping it off.

Our nutritional program encourages you to plan exciting, taste-tempting meals and enables you to choose from all four food groups to keep you satisfied all day!

WEIGHT LOSS HEALTH CENTER INC.

2838 E. Long Lake Rd. (10 Mile & Dequindre) Troy
18591 W. 10 Mile Rd. Washington Square Medical Ctr. Southfield

Call Today for Your Free Consultation
689-2444

*Money Back Guarantee if Not Completely Satisfied *Offer Ends Later Day

Denne's
Hair Designs

BACK TO SCHOOL TIME AGAIN!

STUDENT SPECIAL

\$5.00 off all \$15 & up services.
\$10.00 off PERMS

Offer Good with Selected Stylists thru 9/8/84

Professionalizing in:
• Cutting & Styling
• Permanent Waving
• Hair Coloring Highlighting

Cellophanes
• Make-up Application & Skin Care
• Manicure & Sculpture Nails
• Silk Nail Wraps

Open Mon.-Sat.
Tues., Thurs. evenings 'til 8

15379 Farmington Road
Livonia, Michigan
(1/2 Bk. North of 5 Mile)
261-5736

MITCHELL KLEIN, D.D.S.
and
DOUGLAS PEEBLES, D.D.S.

Are pleased to announce they are assuming the practice of:

Joseph L. Mangan, D.D.S.
5651 W. Maple, West Bloomfield
851-2980

FAMILY DENTISTRY
• No fee for consultation • New Patients Welcome

SAVE \$ ON ROLL TOPS

Pine - 32 1/2 x 54 x 43 1/2 Drawer Desk **\$387.99**
Was \$429.99 NOW

Aspen - 32 x 19 x 41 1/2 Drawer Desk **\$168.99**
Was \$187.99 NOW

Other styles & sizes available at sale prices

The YANKEE CARPENTER

New Location!

1751 S. Telegraph Road
Bloomfield Hills 338-0441

ALBERT YOU AT THE CLOCK, Jr.
BIRMINGHAM SPECIAL CATERING

4th Anniversary Dinner Specials

Delmonico Steaks \$18.99
Veal Cutlet \$16.99
Chopped Sirloin \$3.99

2840 W. 96th Ave. Suite 1000 of Farmington Hills
• Located in Giant Shopping Center • 476-4214

Red Cross is counting on you - to help.

+

MITCH HOUSEY'S

THIS MONTH'S SUPER DINNER SPECIALS!

ROAST PRIME RIB 2 LBS. \$10.00
NY STRIP SIRLOIN 12 OZ. \$12.00
FILET MIGNON 6 OZ. \$12.00

DEARBORN HEIGHTS • LIVONIA

2438 108th St. (at 24th Ave.)
243-0888 (at 24th Ave.)
243-0889 (at 24th Ave.)

One Pair Broiled LOBSTER TAILS \$4.50

8 Week Session—16 One Hour Glasses
BEGINS SEPTEMBER 10TH

ONLY! \$25.00 **CALL 553-0417**

Martha Rounds
SLIMNASTICS

• The Basics of Exercise
• Total Body Conditioning
• 24 Hour of Experience
• The Rhythmic Dance
• Nutrition & Diet
• Beginning Mat Pilates

THE MOST FOR THE LEAST

TRINITY EPISCOPAL CHURCH
26580 Lahmura, Farmington Hills
(Off 11 Mile Rd. between Orchard Lake & 24th Ave.)
MONDAY & WEDNESDAY 8:30 A.M.
(Baby-sitter Available)