

## exhibitions

### FRANKLIN VILLAGE

Sept. 3 — "Art-on-the-Green" is one-day art show featuring works by 58 Michigan and out-of-state artists. It is juried, varied and thriving as a popular event that is four years old. Held as a part of the Labor Day "Round-Up" festivities. Show opens at 10 a.m. on the Village Green, Franklin between 13 and 14 Mile roads.

### PHOENIX IMPRESSIONS

Friday, Sept. 7 — Works done by the local artists attending the workshop's summer print session are on display through Oct. 11. Opening reception 4-8 p.m. Hours are noon to 5 p.m. Monday-Saturday, 11 a.m. to 5 p.m. Sunday.

### OAK PARK LIBRARY

Sunday, Sept. 9 — "Images in Retrospect," a show of oils and watercolors by Marilyn Zeldes, continues through Sept. 29. Reception to meet the artist 7:30-9:30 p.m. Sunday. The library is at 14200 Oak Park Blvd., Oak Park.

### SCHWEYER-GALDO GALLERIES

Sept. 4 — "New York Paintings" by Perez Celis is running concurrently with an exhibition of "Modern Masters," including works by Miro, Calder, Tappin, Lam Cueva and Estroff. Continues through the month, 11 a.m. to 5:30 p.m. Tuesday-Saturday, 330 Hamilton Row, Birmingham.

### CENTER FOR CREATIVE STUDIES

Works by nine Canadian artists continue on display in the Sarkis Gallery through Oct. 3. Regular hours are 9 a.m. to 4 p.m. Monday-Friday. Reception 5-7 p.m. Wednesday, Sept. 5. Also

opening Sept. 5 and continuing through Sept. 17 is a show in the student-run Underground 245 Gallery. "City-States" features works by Joseph Barattelli, Sue Logan, Tim Presley and Dave Roberts. The Center is at 245 E. Kirby, Detroit.

### HOBERMAN GALLERY

Collection of international talent features jewelry by Ken Bova, Esther Knobel, Joyce Scott and Roberta Williamson, ceramics by Catherine Comer and Woody Hughes and knitted wall hangings by Marie Rose Lovett. Continues through Sept. 28. Hours are 10:30 a.m. to 5 p.m. Tuesday-Saturday, 1535 S. Belden, Birmingham.

### SOMERSET MALL

"Focus on the Famous - Chapter III" is a one-woman photographic exhibit by Linda Solomon. She catches sports stars, politicians and entertainers at some of their best and most telling moments. Continues through Sept. 9. Big Beaver at Coolidge, Troy.

### ROBERT L. KIDD ASSOCIATES

New work from New York includes illustration paintings by James Havard and Michael Gallagher; New Realism by James Van Patten and Kung Szeo and paintings by Frank Roth, Peter Kitchell, Lamar Briggs and Kikuo Saito. Continues through Sept. 14. Hours are 10:30 a.m. to 5:30 p.m. Tuesday-Saturday, 105 Townsend, Birmingham.

### TOWN CENTER GALLERY

"Dynamic Lineation," the etchings of Guillaume Azoulay continue through the month. Hours are 1 a.m. to 3 p.m. Monday-Friday, 3000 Town Center, Suite 45, Southfield.

### THE GALLERY... AT MAINSTREET PLACE

Group exhibition features works in watercolor, oil, fiber and ceramics along with a variety of sculpture and jewelry by gallery artists. Continues through Sept. 9. Summer hours are 10 a.m. to 5 p.m. Tuesday-Saturday, 903 N. Main, Royal Oak.

### HALSTED GALLERY

Exhibition of work by recent graduate students from Center for Creative Studies continues through Sept. 15. Those represented in the show are Janet Forbes, Michael Mathers, John Pala, Andy Ross and Bill Rauhauer. Rauhauer is a professor at Center for Creative Studies and a strong force in the local photography world. Reception to meet the artists 6-9 p.m. Tuesday, Sept. 7. Gallery hours are 10 a.m. to 5:30 p.m. Tuesday-Saturday, 550 N. Woodward, Birmingham.

### TROY ART GALLERY

Landscapes from Around the World include works by Rose Arkell, Susan Gold, Phil Greenwood, Johanna Haas, Sybil Mitz, Linda Zella, Hans and Lebadang. Regular hours are 11

a.m. to 5:30 p.m. Tuesday-Friday, 735 W. Big Beaver.

### FEIGENSON GALLERY

"From Detroit 1984" is an exhibition of new work by Cay Bahnmiller, Glenn Booth, Betty Brynne, James Chateau, Ed Fraga, Brenda Goodman, Gerald Horn, Bradley Jones, Gary Mayer, Ann Mikolowski, Gordon Newton, Nancy Pletos, Mary Preston, Robert Sestok and Paul Schwarz. Continues through Sept. 8. Hours are Tuesday-Saturday, 11 a.m. to 5 p.m. in the Fisher Building, room 310.

### WATERCOLOR GALLERY

Contemporary water colors by Sharon Beck, Bernice Forrest, Tamara Essner and Stella Molnar, and folk art by Doug Dennis through Oct. 30. Chinese brush paintings by E.T. Newhouse through Nov. 30. Hours are Monday, Wednesday, Thursday, 10 a.m. to 5 p.m., 416 E. Washington, Ann Arbor.

### SHELDON ROSS GALLERY

"5 from Center for Creative Studies" is a group of works by five area artists selected by their former teacher, Leo Martindale. They include Eileen Aboulafia, 72, paintings; Barbara Co-

telle, 71, paintings; Douglas Hoyer, 61, paintings; Chris Lee, 78, prints; and Richard Myrland, 77, paintings. Summer gallery hours are 11 a.m. to 4 p.m. Tuesday-Saturday, 250 Martin, Birmingham.

### L. IRVING FELDMAN GALLERY

"Form & Figure," various prints, water colors and canvases by Henry Moore, Joanne Norman Chase, David Hockney, Larry Rivers and Grace Hartigan, through September. Hours are 11 a.m. to 5 p.m. Monday-Saturday, until 8 p.m. Thursday, 6917 Orchard Lake, West Bloomfield.

### CANTOR/LEMBERG GALLERY

New work by Leslie Johnson, William Antoon, Susan Pitt and Steve Murakishi are on exhibit along with new monotypes by Jim Dine, collage/lithographs by Robert Motherwell and work by gallery regulars. Hours are 11 a.m. to 5:30 p.m. Tuesday-Saturday, 538 N. Woodward, Birmingham.

### DETROIT INSTITUTE OF ARTS

"Pastor and Precision: The Photographer and Grand Prix Racing 1934-

1944," documents through photographs the people, cars and events of racing's colorful past. Open without charge. At the Albert and Peggy de Salle Gallery of Photography, 9:30 a.m. to 5:30 p.m. Tuesday-Sunday.

### TROY MUSEUM

"World of the Trade" looks at 18th world of the 18th-century blacksmith and farrier, the carpenter, cobbler and shoe-maker, the tinsmith and T.Y. Lumberman. Hours are 9 a.m. to 5:29 p.m. Tuesday-Saturday and 2-4 p.m. Sunday, 60 W. Wadley, just west of Livernois, Troy.

### ALAN DOHRMANN GALLERY

New gallery in Birmingham deals in ancient artifacts, 135 E. Maple, Birmingham.

### PARK WEST GALLERIES

New acquisitions from Victor Vasarely along with works by Agnès, Eric, Picasso, Altman and others are on display in these huge galleries. Hours are 10 a.m. to 6 p.m. Monday-Wednesday, until 9 p.m. Thursday and Friday, Saturday until 5 p.m., Sunday noon to 5 p.m., 29409 Northwestern, Southfield.

## First needlework show set for Oakland Mall

Oakland Mall, Troy, will host the Oakland Mall Needlework and Textile Show and Sale, Oct. 10-11, featuring its first stitichery competition and exhibition.

The exhibition will consist of all prize-winning works and selected entries, a number of which have already arrived from throughout the country. The show promises an outstanding presentation of quality needlecraft in a wide-ranging variety of categories — embroidery (including ethnic pieces), quilting, lace-making, weaving, innovative fibers, wearables, wall hangings and more.

Prizes will be awarded by four judges, all active in local chapters of the Embroiderer's Guild of America and the Needlework Guild of America. Judging will take place on Oct. 10, with the deadline for entering Oct. 9. "The fine arts department of one university requested 10 entry forms," said Merry Silber, show producer, "which indicates to us the quality level of works we are receiving. I am continually surprised at the enthusiastic response, far-reaching and first rate."

BOTH MEN and women have entered this contest including a male lace-maker, a male petit point expert and a male quilter.

Ethnic works already submitted include a folk quilt showing regional costumes of Poland, and manner of Slavic embroidery, Swiss applique, Hmong reverse applique and Bolivian knitwear.

Fashion is represented by artistic wearables, and the 1940 Free Press first place stitichery contest winner will display her place mat set, which won the coveted award.

Workshops and lectures are being offered, along with ongoing free demonstrations in quilting, lace-making, rug weaving, smocking, stenciling and spinning. Onlookers will be urged to participate in the making of lace and in techniques of folding patchwork. Thirty-five vendors will offer handcrafted items for sale during the pre-Christmas fair. These include gifts, stuffed animals, dolls and toys, quilts, clothing, a selection of stocking-

stuffers, books and more. Christmas workshops will enable participants to take home a completed holiday decoration. Admission and parking are free.

The four-day event will take place during regular business hours 10 a.m. to 9 p.m., Monday-Saturday, noon to 5 p.m. Sunday. For information, phone 642-4371 or 540-0166.

**HUNTINGTON Woods - OPEN SUN. 2-5**  
2519 OXFORD. Clean 4 bedroom brick colonial. Excellent condition. Family room, fireplace, remodeled kitchen, 1 car garage, beautiful wood deck. Asking \$105,500. Assume \$72,000 mortgage. Owner relocates. See me to see this terrific home!

**FARMINGTON HILLS**  
Beautiful Wood Creek Hills feature this lovely 4 bedroom, 2 1/2 bath, 2,900 sq. ft. colonial. Toned lot with loads of privacy. Family room, library, 2 fireplaces. Asking \$132,900. Assume \$79,000 mortgage at 9 1/2%. Don't wait to see this terrific home!

**SOUTHFIELD - BIRMINGHAM SCHOOLS**  
12 Mile-Evergreen. Excellent condition on this 3- or 4-bedroom Tri. Sharp remodeled kitchen includes top-of-the-line appliances with 5-year warranty. Family room, fireplace, central air, newer carpet. All this plus terrific assumable mortgage. Asking \$84,900.

**Pomeroy - Realtors**  
559-3344

**HOMES OF DISTINCTION**  
CUSTOM BUILT TO SUIT  
on your lot  
Design Service Available



For Information Call  
**Bove CONSTRUCTION COMPANY**  
9257 Reeck, Allen Park  
382-5446 or 388-2143



At Scripps on the Lake, there's a large all-sports lake... and a 927-acre park reserve with fantastic year-round recreation.

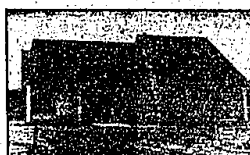
It's located in Orion Township, just 45 minutes from downtown Detroit on I-75. Park homesites — with lake view and park backyard — start at \$19,900. Lakefront homesites range from \$62,900 to \$75,900. See our Capaldi-built "Geneva" model honored by the Builder's Show.



Offered by COLDWELL BANKER/SCHOOLTZ REALTY  
Hours: 10 a.m. to 6 p.m. daily 11 a.m. to 5 p.m. weekends.  
Telephone: (313) 971-1464.  
Directions: Exit 62 off I-75, go south on North 31st mile on Joslyn Road. Left on Schooltz Road.



## Merrill Lynch Realty



**CUSTOM BUILT CONTEMPORARY** on end of court. 4 bedrooms, 2 baths, open floor plan with many energy saving features. 2 fireplaces (one in master bedroom), must see! \$28-9100. \$259,900.



**QUALITY BUILT COLONIAL** features den and full bath on 1st floor, neutral decor, full basement. Backs to wooded area, dock. \$28-9100. \$135,900.



**GOOD VALUE** in beautiful St. John Woods. 4 bedrooms, 2 1/2 baths, remodeled kitchen, screened porch. Excellent floor plan. \$48-8000. \$63,500.



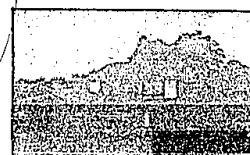
**SIMPLE ASSUMPTION-LAND CONTRACT.** Sharp, spacious Ranch, completely painted inside and out. Open floor plan, finished rec room. Move right in! \$28-9100. \$74,900.



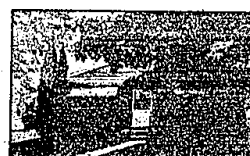
**CHARMING HOME** on beautiful treed lot. 4 bedrooms, 2 baths, family room, fireplace, fenced yard, barbecue, new furnace in 77. Glom shed in basement. \$28-9100. \$22,500.



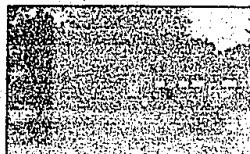
**TOP QUALITY THROUGH-OUT** Loads of closets! 2 furnaces, central air. Paneled garage. Balcony off master bedroom. Treed .97 acre, large patio. \$28-9100. \$199,500.



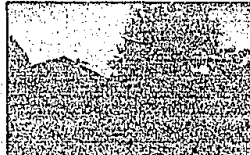
**OUTSTANDING CUSTOM Two-story** is professionally decorated with top quality extras. Extensive decking overlooking wooded ravine lot. \$28-9100. \$204,000.



**PRIVATE TREED and fenced yard** boasts charming Ranch with 3 bedrooms, 1 bath, new carpeting, hardwood floors. New roof, furnace. \$48-8000. \$34,500.



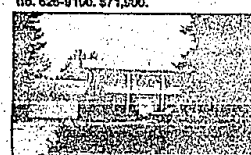
**KENDALLWOOD RANCH.** Sharp 3 bedroom design on a large treed lot. 2 way fireplace, 2 baths. Assumable mortgage to qualified buyers. Immediate occupancy. \$28-9100. \$71,500.



**GREAT, GREAT ROOM!** Very special ranch nestled on private and scenic lot. floor-to-ceiling brick fireplace, formal bay-windowed dining room, many extras! \$28-9100. \$119,000.



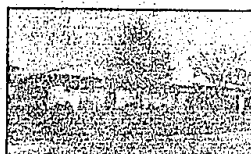
**OPEN SUN. 2-5 PM**  
N. OF 12 MILE, W. OF SOUTHFIELD. 28500 PLEASANT TRAIL. Excellent terms on this 3 bedroom ranch with studio, docked entrance, private patio. \$28-9100. \$71,500.



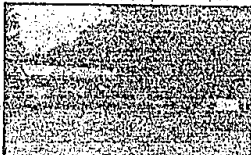
**LAND CONTRACT.** Custom colonial with circular drive. Attached greenhouse, professional landscaping, 4 very spacious bedrooms, central air, matching appliances. \$28-9100. \$119,000.



**ENJOY YOURSELF!** This easy-care brick ranch with 3 bedrooms, very large recreation area, Florida room, much updating! Many must-see custom details! \$28-9100. \$52,600.



**COUNTRY CLUB.** Custom ranch facing golf course views. Includes fireplaced family room, patio, wet bar, above ground pool. Farmington schools. \$28-9100. \$37,000.



**LOVELY RANCH HOME.** On treed lot, inground pool, private patio, 3 bedrooms, 2 baths, family room fireplace. New roof in 75. Farmington schools. \$28-9100. \$32,000.

