

Creative Living

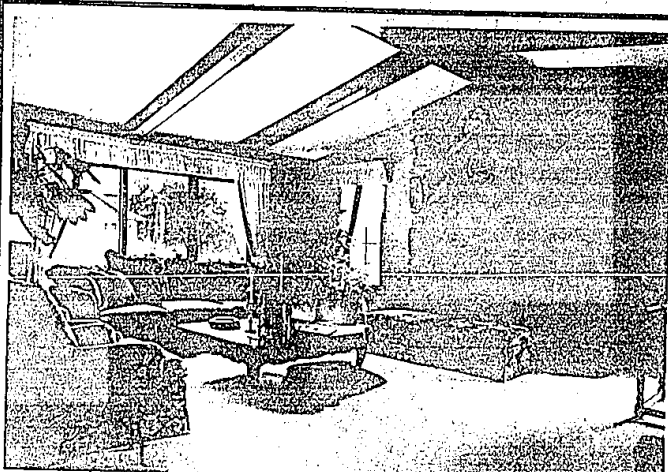
Corinno Abatt editor/644-1100

classified real estate and homes

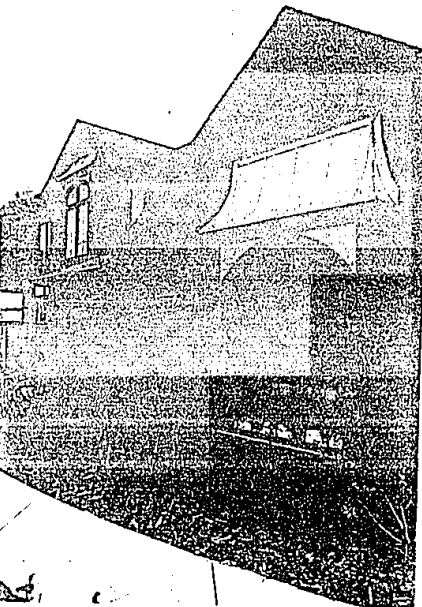


Thursday, September 13, 1984 O&E

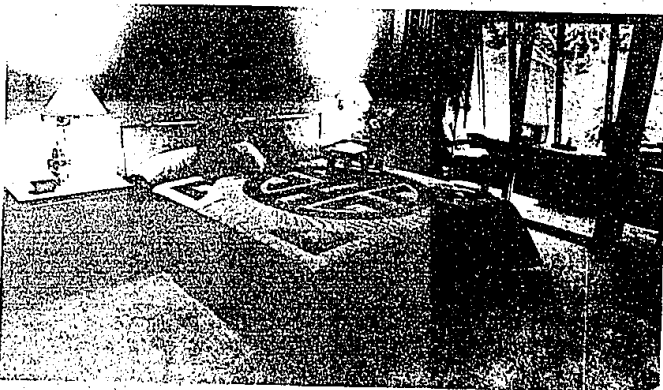
(P)1E



The great room of this English Tudor colonial by Scaccia Builders of Warren combines warmth with drama with its natural fieldstone fireplace and raised ceiling.



The Hampton Colonial is one of two homes built by Scaccia Builders. This is a traditional colonial with four bedrooms and 2½ baths.



This master bedroom in a house by Robertson Bros. Co. has its own outdoor retreat, a wooden deck. This garden style home features an atrium, cathedral ceiling in the living room and French styling.

Homearama '85

Elegance and efficiency mark 12 showcase homes

By Mary Klemic
staff writer

Elegant features that immediately catch the eye and little, not-so-apparent features that offer gentle surprises. They're both in abundance at Homearama '85, the display of 12 new model homes under way at the Farmington Brook subdivision in Farmington Hills.

This is the second year of the show, again orchestrated by the Builders Association of Southeast Michigan (BASM). It's a showcase of the newest home construction technology, featuring 12 custom-designed homes by 11 different builders. Each of the homes was individually landscaped and decorated by local landscape architects and interior designers.

The houses this year are larger and in a higher price range (\$120,000 to \$250,000) than those seen last year, according to Dennis Dickstein of Ralph Manuel Associates, a member of the Homearama managing committee. "There is more flexibility for the builders," he said.

APPARENT TRENDS in Homearama '85 include large windows, high ceilings, wood decks, stove grills that can be changed for making waffles or barbecuing, recessed ceiling lights, intercoms and whirlpool bathtubs, along with energy-efficient insulation. Oriental motifs, ceiling fans, large vases and such soft colors as beige and mauve were seen frequently.

Dramatic entrances highlight homes by Robert R. Jones Associates of West Bloomfield and Robert Halperin of Southfield's Cramie Inc. But there are more subtle features as well.

The former has a stately, two-story structure with a sunken living room,

majestic ceilings and fireplaces in three rooms, including the master bedroom. Persons seated at a table or desk can look out a window that runs underneath cabinets.

The Halperin house is a contemporary, one-story house with a metal gate leading to the front door. The foyer ceiling is tall and rounded. There is a corner fireplace and a redwood deck. The kitchen features cabinets with linen surfaces. In the bedroom, there is a walk-in closet.

BOTH HOUSES are energy-efficient. Jones' is insulated with urethane foam that doesn't contain formaldehyde. Halperin's features insulated glass windows and Tyvek wrap that prevents air infiltration.

A Tudor-style house by Steven Eicholtz of Professional Home Builders Group Inc. of Plymouth also boasts energy-saving features, such as double exterior wall construction and a fully insulated basement. All these are hidden under the vaulted ceilings, solid oak cabinets and hand-stained trim.

A cozy great room sounds like a paradox, but John Scaccia of Scaccia Builders of Warren achieved that effect in his English Tudor turret colonial house, one of two colonial style structures he built for Homearama '85. The room features a natural fireplace that dominates one wall. Circular stairways in the foyers, and dining rooms with bay windows are found in both Scaccia houses.

An example of the added indulgences found at Homearama is the master fashion bath, in the house built by Gerald Brody of Country Ridge Home Builders of Troy. The room contains a whirlpool tub and shower steamer. And then there's the deck off the master bedroom suite in the garden home built

by Jim Juhle of Robertson Brothers of Bloomfield Hills. The deck leads to a secluded garden area, making a private outdoor retreat.

VISITORS DON'T have to go inside the homes to be impressed. The Shaker-ton, by Janet Compo of Farmington's James D. Compo Inc., has an updated Victorian exterior and octagonal sunroom. Inside, there's a mirrored exercise area and a whirlpool tub for two.

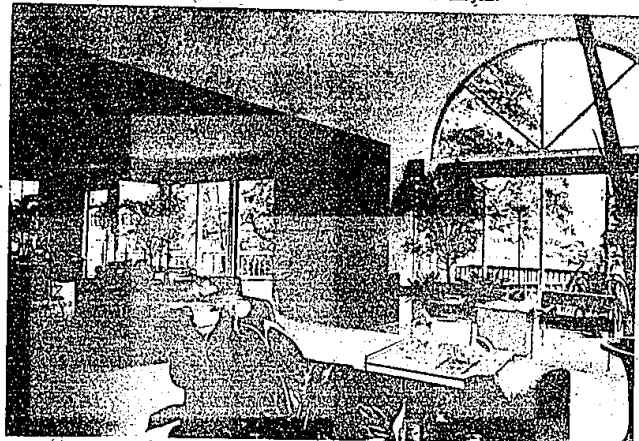
For whom are these homes built? The answer is for any age or family size that can afford them. Gwen Halperin, the builder's wife, told a Homearama visitor last week that Halperin's three-bedroom contemporary home would be comfortable for a family or "empty nesters," a couple whose children have grown and left home. The den could be made into a bedroom if necessary, she said.

The intention of Homearama is to stimulate the state's home-building industry. Detroit Edison and Standard Federal Savings are sponsoring the event, along with the BASM.

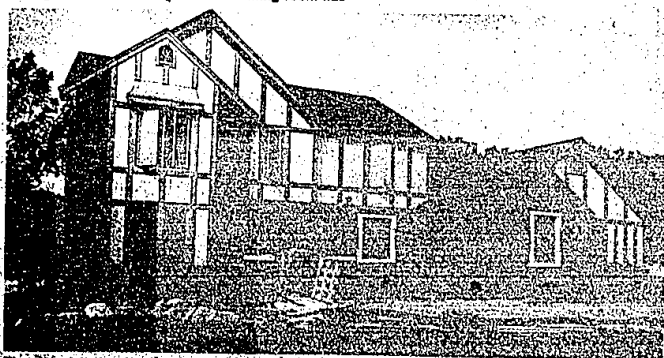
Detroit Edison is providing consulting services on energy efficiency and security lighting. Standard Federal Savings is offering buyers special reduced mortgage rates. More than 20 companies are showing products and services for the home. Refreshments are available.

Homearama '85, which opened Thursday, is on Haggerty north of 12 Mile Road. It continues through Sunday, Sept. 16. Hours are 1-11 p.m. weekdays and 10 a.m. to 11 p.m. Saturdays and Sundays. Admission is \$3 per person.

More than 40,000 persons attended the first Homearama last year. The BASM is hoping to double that figure this year.



This living room in this home by Ralph Manuel Builders of Birmingham features a rounded ceiling and a corner fireplace. The dining room has recessed lighting. The home can be three bedrooms or two bedrooms and a den.



The Kendall by Professional Home Builders Group of Plymouth is a four bedroom Tudor. The home features hand-stained trim to match the oak cabinets and vaulted ceilings in the master bedroom and great room.