

exhibitions

MAINSTREET PLACE GALLERY

Friday, Sept. 14 - An opening gala for an exhibit of art and jewelry by Westland artist Sandra Lee Weed will take place 6:30-10 p.m. The exhibit will run through Oct. 31. Weed also will be teaching the techniques of encaustic watercolor at the gallery. The gallery is located at 903 Main, between 11 Mile Road and Catalpa, in Royal Oak.

UNIVERSITY OF MICHIGAN MUSEUM OF ART

Friday, Sept. 14 - Exhibitions focusing on photography and ceramic sculpture will open at the University of Michigan Museum of Art in Ann Arbor. "Gus Foster: Panoramic Images" contains 21 photographs of Southwest and Rocky Mountain landscapes. U-M football games and hot air balloon races. It closes Oct. 21. "James Leacock: Ceramic Sculpture" shows the influence of the automotive industry and its impact on agriculture and society. Leacock works with industrial products and casting slips, using automobile paint for a unified effect. It continues through Oct. 14. Free docent-guided tours can be arranged by calling 763-1231 between 9 a.m. and noon weekdays.

ART IN THE PARK

Saturday-Sunday, Sept. 15-16 - Plymouth watercolor artist John Krieger will be among the 150 artists featured at the 10th annual Art in the Park, 10 a.m. to 6 p.m. both days at Shalin Park in Birmingham. Gourmet food, strolling entertainers and a children's art area will be featured. The event will benefit Common Ground, a crisis intervention service agency.

THE YELLOW HOUSE

Sunday, Sept. 16 - The second art and craft fair-open house will take place from noon to 6 p.m. Local artists will exhibit and demonstrate stenciling, hand-drawn stationery, bobbin lace, thimbles, metal punch lamps and shades, oil painting, rug hooking, quilting, needlepoint, embroidery and more. A special group of completed needlepoint will be for sale, and hand-painted canvases will be marked down to 25 percent of their regular price. Fall class schedules will be available. Refreshments will be served. The Yellow House, Jean Lauwers Needlepoint, is located at 40509 12 Mile, Novi. Call 348-6870 for information.

CRAFT GALLERY

Sunday, Sept. 23 - Craft Gallery, Country Folk Art Show, will be held from 10 a.m. to 4 p.m. at Roma's of Garden City, 32550 Cherry Hill, between Merriman and Wyandale. Displays will include quilting, wood toys, shaker, stencilling, furnishings, American reproductions, pottery, fiber, baskets, dolls, tin and metals, wheat and raffia, spices and herbs, cut and pierced lamps and shades, leather and a variety of

country folk ideas. Admission is \$1, with door prizes. For information, call 335-2257 before 8:30 a.m. and 4 p.m.

INTERNATIONAL INSTITUTE

Sunday, Sept. 23 - A special exhibit of paintings and sculpture by folk artist Frank Stefanes, and selected pieces that illustrate his ethnic heritage and life's work, will be displayed in the Hall of Nations and the American Room at the International Institute of Metropolitan Detroit through October. The exhibit will open officially with a reception at 2 p.m. The Institute is located at 111 E. Kirby in Detroit.

PENNIMAN SHOWCASE

Through Sept. 29 - New raku pieces by Barry Bernstein, ceramics by Tom Krueger from his recent landscape design series, and surface texture porcelain by New York artist Carolyn Leung will be featured at the Penniman Showcase, 827 Penniman in Plymouth. Hours are 10 a.m. to 6 p.m. Mondays through Fridays and 10 a.m. to 5 p.m. Saturdays. Phone 455-3531.

SCARAB CLUB

Sept. 30 to Oct. 14 - The Scarab Club of Detroit announces the 1984 watercolor exhibition to be held at 217 Farmsworth. All Michigan and Ontario watercolorists are invited to compete for honors and prizes that will be awarded by nationally known artist Des Knott. Artists and friends will hold a reception Sept. 30. The public is invited to attend the exhibition, which will run Oct. 1-14. Hours are 10 a.m. to 4 p.m. weekdays and Saturdays and 2-5 p.m. Sundays. Phone 831-1250.

RUBINER GALLERY

"Works on Paper" features a new portfolio by Larry Zox and works by 12 nationally recognized artists. Opening 2-5 p.m. Saturday. Hours are 10 a.m. to 5:30 p.m. Tuesday-Friday, until 5 p.m. Saturday, 7001 Orchard Lake, West Bloomfield.

MICHIGAN GALLERY

"Gone but not Forgotten," features the proponents of "no brand art" in a show which continues through Sept. 21. Hours are 6-9 p.m. Tuesday and 11 a.m. to 4 p.m. Thursday-Saturday, 2681 Michigan, one mile west of Tiger Stadium, Detroit.

PONTIAC ART CENTER

"Patterns and Clay," an exhibition of paintings by Mary Celestino and ceramics by Ann Darron, will be on exhibit through Oct. 13 at Pontiac Art Center, 47 Williams. Hours are from 9 a.m. to 5:30 p.m. Tuesdays through Saturdays.

HABATAT GALLERY

Glass Engravings, a European tradition, includes works by Jiri Hrabec of Czechoslovakia, Ronald Pennell of England and Helmut Kohler of West Germany. Show continues through Sept. 30 at Habatat, 28255 Southfield Road, Lathrup Village.

DETROIT ART INSTITUTE

Sept. 18 - "Eleanor and Barbara: Photographs by Harry Callahan" is a show of 120 works by photographer/teacher Harry Callahan. Images of his wife and daughter will be presented through Nov. 25 at the Detroit Institute of Arts, 5200 Woodward. "Flowers of Yorik: Yorik Weaving of the Torres Mountains" will be shown through Nov. 18 at the DIA. Nearly 80 textiles created by the Yoriks, a semi-nomadic people of south-central Turkey, are included. Hours are 9:30 a.m. to 5:30 p.m. Tuesdays through Sundays.

CANTOR/LEMBERG GALLERY

Mixed media works on paper by Jim Dine whose newest subject is the "Venus de Mile," inspired by a plaster replica he found in an art store. Also a selection of small works by Detroit, Adria Aronow. Continues through Oct. 3. Hours are 11 a.m. to 5:30 p.m. Tuesday-Saturday, 538 N. Woodward, Detroit.

DULANY'S GALLERY

"Han Dynasty Impressions," first of its kind in the world, is an exhibition/sale of 74 objects from China, 206 B.C.-220 A.D. They are beautifully crafted, funerary works in ceramic and metal. Hours are 10:30 a.m. to 6 p.m. Tuesday-Saturday, 183 Oakland, Birmingham.

DETROIT FOCUS GALLERY

"Artists Choose Artists" features works by Wendy MacGaw, Marilyn

Bouskila, Bob Caskey and Douglas Hoppa. Hours are noon to 6 p.m. Wednesday-Saturday, 743 Beaubien, Detroit.

COUNTY GALLERY

"Maps/Journeys/Spaces" with new works by Chris Reising and Veronica Bel Schaden continues through Sept. 27. Open during regular business hours in the Oakland County Executive Office Building, 1200 N. Telegraph, Pontiac.

I. IRVING FELDMAN GALLERY

"Forms & Figures" continues through Sept. Included in the show are works by Henry Moore, Jeanne Norman Chase, David Hockney, Larry Rivers, Rufino Tamayo, Philip Pearlstein, Lester Johnson, Frank Stella and Roy Lichtenstein. Hours are 10 a.m. to 5 p.m. Monday-Saturday, Thursday until 8 p.m., 4917 Orchard Lake, West Bloomfield.

SHELDON ROSS GALLERY

Watercolors from St. Maarten by Romare Bearden continues through Sept. 23. Hours are 11 a.m. to 5 p.m. Tuesday-Saturday, 259 Martin, Birmingham.

PHOENIX IMPRESSIONS

Works done by the local artists attending the workshop's summer print session are on display through Oct. 11. Opening reception 4-6 p.m. Hours are noon to 5 p.m. Monday-Saturday, 11 N. Perry, Pontiac.

Lakeridge of WABEEK

NOW COMPLETE AT A REDUCED PRICE!



A superbly designed home with that open feeling.

- Quality Construction with top of the line appointments. Views of the Wabek Golf Course.
- 4290 sq. ft. - 4 bedrooms, 5 baths, 3 car garage.
- Great room, conversation area, formal dining room, library and bar alcove.
- Super master suite with 2 x 6 in. whirlpool.
- Bridge overlooking lake and great room. Guest Suite.
- Oak Trim, skylights, huge deck.
- Bloomfield Hills Schools.
- Alarm system, landscaping, carpeting plus much, much more...TOTALLY COMPLETE!

\$339,500

an IVANHOE DEVELOPMENT

355-2700 or 644-4700

OPEN SUN 2-5 or by appointment

Middlebelt S. of Long Lake to Regent Drive, to Lakeridge Lane to 4051 Fox Lake Drive.

Other Homesites available. View this home or let us design the special home to suit your needs.

Sales by Real Estate One, Inc. Realtors

NORTHVILLE'S FINEST CONDOMINIUM VALUE



Northridge Estate offers new Condominiums with quality features at a great value. 2 bedroom, 2 bath Condominiums are priced at only...

\$52,900

Features include:

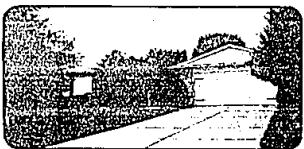
- Whirlpool appliances — refrigerator, range, dishwasher
- Spacious private walled patio or balcony
- Central air
- Carport
- Pre-wired for cable

On 7 Mile Road, 1 Mile West of I-275 - In Northville Township - Just Down the Road From Northville

MODEL HOURS:
1-6 p.m. daily
(closed Thursdays).
Model phone number, 349-4475.



NORTH RIDGE



FUSSY BUYERS SPECIAL

STOP LOOKING, this is your home. 3 bedroom brick ranch with 2 1/2 baths, central air, island kitchen and Florida room. Move-in condition. Quick occupancy. \$107,900. 477-1111.



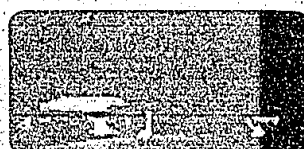
LAKE SHERWOOD

STUNNING CUSTOM RANCH, builders own home. Superb quality, 3 fireplaces, 2 wet bars, 4 bedrooms, 3 full baths, 50 foot tree room. Privilege and view of Lake Sherwood. \$144,900. 477-1111.



HISTORICAL VICTORIAN

REGISTERED Victorian colonial in downtown Farmington. Recently renovated and restored to its original condition. Lots of charm in evident here. Immediate occupancy. Move-in condition. \$30,900. 477-1111.



COUNTRY SETTING

THREE bedroom brick ranch, 3 1/2 baths, large family room on a beautiful wooded lot. 673,250. 851-1500.



"TOUCH OF CLASS"

COUNTRY LIVING. Excellent atmosphere in this open flowing floor plan. Possible Land Contract. Large game room in addition to basics. Many custom features. \$115,900. 851-1900.



PRICED RIGHT — MOVE RIGHT IN

IMMACULATE 4 or 5 bedroom Colonial. Very large formal dining room, 2 fireplaces, den, possible in-law suite. Premium lot backs to commons. \$139,500. 851-1900



COLONY PARK BEAUTY

EXQUISITE DECOR. Great curb appeal. Four bedrooms, 2 1/2 baths, family room, rec room, central air and so much more. Great Land Contract terms. \$149,900. 851-1900.

Lathrup Village
Mary Ann Grawl-Mgr.
559-2300

Westland
Gail Hodge-Assl. Mgr.
326-2000

Livonia
Barbara Walkowicz-Mgr.
525-0990

Farmington
Jim Stevens-Mgr.
477-1111

Farmington Hills
Genny Conrad-Mgr.
851-1900

Livonia
Irene Kraft-Mgr.
261-0700

Plymouth/Canton
Joe Melnik-Mgr.
425-7000

Northville
Sharon Serra-Mgr.
348-6430



Free Limited Time Offer*

Real Estate One is doing it again. We are offering the top pre-license course in the state of Michigan for Free. Please call one of our managers today and take the first step toward a new career!

*Small charge for materials.

FARMINGTON HILLS

DECORATOR'S TOUCH. This beauty may well be the most beautiful in all of Farmington. Beautiful decor, new family room, swim club down the street. Well maintained. \$67,900. 477-1111.

NOVI

TWO bedroom and unit condo with 2 1/2 baths, neutral decor. Heat included in maintenance fee. \$55,900. 848-6430.

NOVI

PRICED TO SELL! Move-in condition. Mint condition. First in and sell. Hardwood floor plan with a country kitchen. Recently decorated and updated. Central air just one of many fine features. \$79,900. 851-1900.

SPACIOUS 3 story Tudor home in highly sought 4 bedrooms, 2 1/2 baths. Marble flooring, family room with fireplace. Neutral decor, large deck, 16 acre lot, basement and 2 car garage. \$112,900. 348-6430.



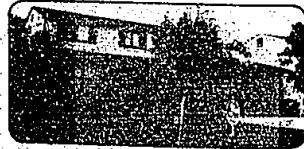
BUILDERS MODEL

POPULAR "FRANKLIN MODEL." Desirable location. Open area with balcony. Custom package: wood, alarm system, many extras. Immediate occupancy. \$169,900. 851-1900.



ROOM TO GROW

OVER one acre of hilly ravine living in this 4 bedroom, 2 1/2 bath home. Walk out basement, 2 natural fireplaces and 2 car garage. \$72,000. 658-2200.



BEAUTIFUL COLONIAL

UNMATCHED IN QUALITY and amenities. 4 bedrooms, 2 1/2 baths, enlarged family room with fireplace and walnut paneling. Downward off concrete to covered patio, finished basement, 2 car garage, central air and much more. \$74,900. 559-2300.

Michigan's Largest Real Estate Company