

## Torch Drive tops \$50 million mark

United Foundation volunteers reported a record-breaking grand total of \$50.9 million, or 101.7 percent of this year's \$50-million Torch Drive goal.

This is the highest amount ever raised in the UF's 36-year history, and \$3.9 million more than was raised in 1983.

The funds raised will support health and community service programs at 130 charitable organizations in Wayne, Oakland and Macomb counties.

**TORCH DRIVE** Chairman Elmer W. Johnson, vice president and general counsel of General Motors Corp., announced the UF's 1984 Urban Progress Fund (UPF) campaign reached its goal of \$2.75 million to support the activities of New Detroit Inc. in 1985.

The UPF campaign, which solicits funds from Detroit-area corporations and foundations, has been conducted concurrently with the Torch Drive since 1983.

The Benson Ford Trophy, which recognizes the regular chapter campaign unit achieving the highest percentage of quota, was presented to the Service Unit, chaired by Ernest L. Grove Jr.,

vice chairman, Detroit Edison Co. The amount raised was \$7.5 million, or 104.3 percent of quota.

**FINAL TOTALS** for the other chapter campaign units are:

• Industrial, chaired by John A. Betti, executive vice president, Technical Affairs, Ford Motor Co. — \$5.6 million.

• Commercial, chaired by Andrew R. Brodman, president, Michigan National Bank of Detroit — \$7.8 million.

• Public service, chaired by William E. Stevenson, executive vice president, external affairs, Blue Cross and Blue Shield of Michigan — \$4.6 million.

• Automotive manufacturers unit, chaired by Roger B. Smith, chairman, General Motors Corp. — \$22.3 million.

• Community Campaigns, chaired by Kenneth Walpole, vice president, Corporate Strategy and Analysis, Ford Motor Co. — \$1.46 million.

• Advance Gifts Unit, chaired by Joan B. Warren — \$1.8 million.

Costs for Victory Dinner and all unit achieving the highest percentage of quota, was presented to the Service Unit, chaired by Ernest L. Grove Jr.,

## AT&T: Increase rates \$59 million

AT&T Communications of Michigan has asked the state Public Service Commission for higher rates that would bring in \$59 million more revenue.

The company also asked the PSC for immediate and partial relief in the form of a surcharge while it awaits a final decision on its proposal.

Dix Dishong, vice president of AT&T Communications of Michigan, said the request is made necessary by 1) higher-than-anticipated carrier-access charges paid to local phone companies and 2) the restructuring of long-distance rates ordered by the MPSC last April. The restructuring reduced the company's revenues by \$44 million.

Dishong said the company has a major prob-

lem in Michigan — "access charges, the money we pay for local connections to the long-distance network."

"These charges account for nearly 80 percent of our operating revenues. We've done everything possible to control costs and avoid higher prices," he said. "But until access charges are reduced to realistic levels, we are forced to make this request."

The company could reduce its request, almost dollar-for-dollar, to match any reductions in access charges AT&T pays to local telephone companies, according to Dishong.

AT&T's request calls for increases in charges for long-distance calls among Michigan's five lo-

cal service areas, called LATAs (local access and transport areas), and for private line, WATS and 800 service.

## Tall & Big Men

### VALUES

• BOTANY • PALM BEACH • THE KING-SIZE CO.

**Blazers**  
from **\$99<sup>95</sup>**

**Suits from \$169<sup>00</sup>**

**King-Size®**  
**men's Shops**

YOU CAN CHARGE IT

DETROIT: 20525 James Couzens Highway

Near Northland Shopping Center

EAST DETROIT: 20529 Gratiot Avenue

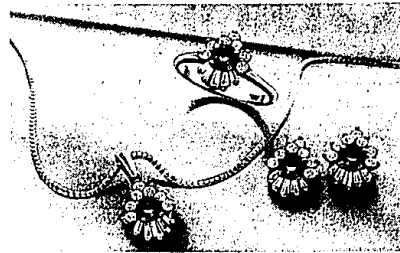
Near 8 Mile Road

WESTLAND: 7040 Wayne Road

Near Westland Shopping Center

O&E sports...  
your guide to local scores

## BRILLIANT GIFT IDEAS



Choose from a fine quality sapphire or ruby center, accented with diamonds and set in 18k yellow gold.

Ring, \$1850. Pendant, \$1850. Earrings, \$2400. Selection varies by store.

**CHARLES W. WARREN**  
JEWELRYSMITH INC.

WESTERN HILLS: 10000 HILL  
EASTLAND-WESTLAND: BROADVIEW-LAKESIDE-FAIRLANE-TWENTY OAKS-CLARKLAND

Call in your results:  
Eccentric - 644-1101  
Observer - 591-2312

## Bavarian Village

### SKI SHOPS

### BEGINNER SKI PACKAGE SET

FOR ADULTS AND TEENS

• SKIS • BOOTS

• POLES • BINDINGS

REG. \$387

**\$188**

SALE

• SX-7 SKIS

• ALPINE BOOTS

• LOOK 39 BINDINGS

W/BRACE

• KERMA OLYMPIC POLES

### BEAUTIFUL SKIWEAR

save 30%  
10 TO

WE'RE SHOWING ALL THE NEW STYLES AND SHOWING SOME GREAT SAVINGS ON SELECTED NEW '85 STYLES TOO. JACKETS, BIBS, BEAUTIFUL SWEATERS & THE HOT NEW STRETCH PANTS. DISCOVER OUR FABULOUS SELECTION FOR MEN, WOMEN & KIDS. SALE ENDS WED. NOV. 21

### 50% off SALOMON SX 90 EQUIPE SKI BOOTS

RETAIL \$295

**\$147<sup>50</sup>**

SALE

## Bavarian Village

FULL LINE — FULL SERVICE SKI SHOPS

- BLOOMFIELD HILLS: 2540 WOODWARD at Square Lake Rd. 338-0803
- BIRMINGHAM: 101 TOWNSEND corner of Pierce 644-5950
- LIVONIA/REDFORD: 14211 TELEGRAPH at the Jeffries Fwy. 534-8200
- MT. CLEMENS: 1216 S. GRATIOT 1/2 mile north of 16 Mi. 463-3620
- EAST DETROIT: 22301 KELLY between 8 and 9 Mi. 778-7020
- ANN ARBOR: 3336 WASHTENAW west of U.S. 23 973-9340
- FLINT: 4261 MILLER across from Genesee Valley Mall. 313-732-5560
- SUGAR LOAF: SKI AREA 18 miles N/W of Traverse City 616-228-6700
- FARMINGTON HILLS: 27847 ORCHARD LAKE RD. at 12 Mi. 553-8585

OPEN DAILY 10-9pm., SATURDAY 10-5:30, SUNDAY 12-5.

• VISA • MASTERCARD • DINERS • AMERICAN EXPRESS WELCOME

## SAVE BIG ON TOP PERFORMANCE SKI-BINDING COMBINATIONS

'85 K-2 COMP SPORT SKIS \$250.00 SALE  
TYROLIA 290 DIAGONAL BINDINGS W/BRACE 119.95  
TOTAL 369.95 **\$249**

ROSSIGNOL STRATO BLUE \$270.00 SALE  
LOOK 89 SENSOR BINDINGS W/BRACE 114.95  
TOTAL 384.95 **\$249**

*Plus...* RECEIVE OUR \$100 LET'S GO SKIING BONUS FREE with all Alpine Skis purchased this week.

'85 DYNASTAR EQUIPE CX \$250.00 SALE  
TYROLIA 290 DIAGONAL or LOOK 89 BINDINGS 119.95  
TOTAL 369.95 **\$263**

'85 OLIN 730 SKIS \$245.00 SALE  
TYROLIA 290 DIAGONAL or SALOMON 647 BINDINGS 119.95  
TOTAL 364.95 **\$269**

ROSSI BLUE EAGLE SKIS \$290.00 SALE  
LOOK 89 SENSOR BINDINGS W/BRACE 114.95  
TOTAL 404.95 **\$269**

'85 K-2 612 RS SKIS \$275.00 SALE  
TYROLIA 290 DIAGONAL or SALOMON 647 BINDINGS 119.95  
TOTAL 394.95 **\$273**

'85 OLIN 770 SKIS \$265.00 SALE  
TYROLIA 290 DIAGONAL or SALOMON 647 BINDINGS 119.95  
TOTAL 384.95 **\$289**

'85 LARGE SL5 SKIS \$275.00 SALE  
SALOMON S-747 or LOOK 99 H.P. BINDINGS 134.95  
TOTAL 409.95 **\$297**

'85 OLIN 830 SKIS \$290.00 SALE  
TYROLIA 290 DIAGONAL or SALOMON 747 BINDINGS 139.95  
TOTAL 429.95 **\$349**

## SKI SHOW BONUS COUPONS

COUPONS NOT VALID ON SALE MDSE. VOID AFTER NOV. 21 1984

**20% off ANY BARRECFRATER SKI RACK** **\$5 off ANY SKI GRABBER BARRECFRATER**

**\$5 off ANY SKI GOGGLE** **\$3 off ANY T-NECK**

**\$5 off ANY SKI POLE** **\$3 off MASTER SKI LOCK**

**\$5 off ANY SUN GLASSES** **\$5 off ANY SKI BAG**

**COUPON EXPIRES 11/27/84**

**\$2 OFF Shampoo, Cut, & Style**

**hair today**

OPEN 7 DAYS  
Mon.-Sat. 10-9  
Sun. 12-5

ROCHESTER • WOODCHURCH Mall • 652-6555  
CLAWSON CENTER • 288-4450  
LIVONIA • Woodward Center • 281-4010  
BLOOMFIELD • Kingswood Plaza • 332-3770

**GEOMETRIC VIBRATIONS**  
757-2654

**RELOCATION SPECIAL**

**22% OFF**

First Time Customers Only  
Astrology & Psychic Readings & Parties (individual or group)  
757-2654  
WPAG's Guest Psychic Astrologist "Christopher Powers"  
Multi-Practitioner Expires 11-30-84

**COUPON**

Celebrate The  
**GRAND OPENING**  
OF OUR SECOND LOCATION  
OF  
**TOSSA PARTY**

Your  
Complete Party  
Supply Center

**SAVE 20% ON EVERYTHING IN STOCK AT BOTH LOCATIONS**

With This Coupon

• Office Parties • School • Social Events  
• We Supply Parties From 2 to 2000  
LIVONIA MID-TOWN SHOPPING CENTER  
AREA: Middlebelt & 7 Mile Rds.  
478-8902

LATHRUP VILLAGE: 27831 Southfield Rd. At 114 Mile Rd.  
557-8151 O/E

M-F 10-6 SAT. 10-6 SUN. 10-6  
Expires Nov. 30, 1984

**FOOD EQUIPMENT RENTALS**