

Winter wipers prevent freeze up

Thursday, December 27, 1984 O&E

A group of New England researchers familiar with test procedures in frigid weather conditions have provided the latest evidence that specially designed "winter" windshield wipers are superior in performance to conventional wiper blades.

After a three-month test last winter, 67 percent of the employees of the U.S. Army Cold Regions Research and Engineering Laboratory in Hanover, N.H., who participated in the test, agreed that "winter" blades were distinctly better.

"The build-up of ice and snow on regular wipers annually hampers driving visibility for millions of Americans," according to Larry Koles, manager of technical programs for Anco Wipers, which conducted the tests. "The results of this test provide further proof that

winter blades will enhance safe motoring in inclement weather."

"Winter" blades, rapidly becoming popular across the country, are designed with a rubber "bead" that completely encloses the metal superstructure of the blade. This rubber case keeps the blade flexible by preventing ice or snow build-up on the moving parts of the blade. With regular wipers, moisture will freeze around "joints" on the blade, and the wiping element will not clean evenly across the curvature of a windshield.

The Cold Regions Laboratory employees installed one "winter" blade and one regular blade on their personal vehicles, and closely observed wiping performance all winter. Periodically, they would switch blades from driver's side to passenger's side.

More than 52 percent of those evalu-

ating the blades had never used winter blades previously, and 92 percent recalled problems in the past with conventional wipers in winter weather.

Other Anco tests have found similar support for the performance of "winter" blades.

Also using the side-by-side comparison procedures, 31 fleet safety supervisors, who are members of the Colorado Motor Carriers Association, tested the special snow blades last winter in the Rocky Mountain region, which suffered through a season of heavy snow. Ninety percent said the "winter" blades performed better than regular wipers.

In an earlier test by 42 snowbelt automotive writers and 15 Chicago-based airport limousine drivers, 89 percent agreed that snow blades were superior to conventional types in snow and ice conditions.



Christmas rush, 1950s style, at Trombley's Farmington Post Office.

Old days recalled

Continued from Page 1

municipal court for 16 years.

One reason they're here instead of Florida is that their two children, David, an attorney and electrical engineer, and Linda Feckham, a homemaker and former teacher, and two granddaughters — live nearby.

"We know everybody here," Trombley said. "To move just wouldn't be smart thinking."

Anyway, the Trombleys have chosen an appropriate place to live. Their home is right across the street from the building which housed Farmington's first post office.

Garage business turns full time

Continued from Page 3

After the birth of their son, Matthew, in February, 1983, Kim joined her husband full time.

Support group meets

Weekend Moms, a support group sponsored by the YWCA of Western Wayne County, serves as a vital support system for mothers who do not have custody of all or some of their children.

Through identifying programs and sharing feelings, mothers help each other through the realities of this crisis.

"We had set aside some cash so it was really no problem," Frank said. The couple employs a full-time baby sitter for their 32-month-old son, who is apt to totter into the studio from time to time.

EXCEPT FOR Kim's simple gold earrings, the couple wore no jewelry, not even wedding rings.

"Not while we work," Frank said. "If we make something we especially like, we wear it," Kim said.

She reminisced about a stunning mens opal ring that Frank kept hidden in the back of one display case. When a customer expressed serious interest in it, Frank told her it was sold. He bought it for himself that day.

Surveying the studio, Frank said that the half brown, half green floor will soon be one color, and skylights will be added.

"Business is good. We're going to jazz up the place a bit," Frank said. "My first worry starting out here was — are we going to have customers willing to come to our home? There's no sign out front, and we don't advertise except for the art shows."

"But that hasn't been a problem. If people like our work, they find us."

Volunteers are called

Persons interested in volunteering for Common Ground, Oakland County's 24-hour Crisis Center, are invited to attend an orientation session at 8 p.m. Wednesday, Jan. 2, in Common Ground, 1090 South Adams in Birmingham. No appointment is

necessary.

Individuals interested in the crisis worker position will have the opportunity to sign up to screen for admission to the training program. Training will begin Jan. 18.

Cruise Wear...

Early arrival of cruise and resort wear will insure your fun in the sun! Ready for your inspection are the newest

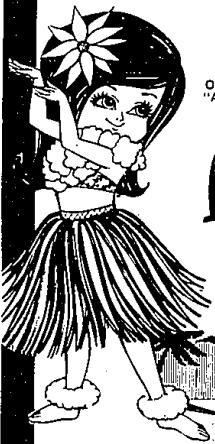
Terry Tops
Tennis Coordinates
Golf Slacks with
Matching Shirts
Swim and
Walking Shorts

Go South with style...
Our own Tailoring Shop will help by "Altering" those last minute fashion decisions for men and women
Alterations regardless
where purchased

Lapham's
Men's Shop

Home of the Athlete's Suit
120 E. Main-Northville 349-3677

Open Thurs. & Fri.
Evenings 'til 9 p.m.



DAVIDA's
Dress Shop

**YEAR-END
CLEARANCE**

UP TO **75% OFF**

**FRIDAY & SATURDAY
DEC. 28th - 29th**

APPLAGATE SQUARE
28839 Northwestern
at Inkster Rd.

OAK PARK
25603 Coallidge
at 10 1/2 Mile



AT DICK MORRIS YOU'LL SAVE BIG!

DO YOU
NEED
Sales Tax
Credit?
Investment
tax credit?
Depreciation
expenses?

INVOICE SALE

SELECT
FROM OVER
55 NEW
MODELS

LAST 3 DAYS OF 1984

Thurs., Dec. 27 • Fri., Dec. 28 • Mon., Dec. 31

Why wait any longer!

Dick Morris makes it easy!

Every 1984 car or truck in stock will be priced at invoice.*

GM Employees save even more
option No. 2 programs

**EXAMPLES OF HOW
YOU'LL SAVE!**

NEW 1984 CORVETTE	List Price	SAVE
	\$26,896	
	Invoice Amount	
	\$21,829	\$5,067
Stock No. 8949		

NEW 1984 CAPRICE CLASSIC	List Price	SAVE
	\$13,105	
	Invoice Amount	
	\$11,417	\$1,688
Stock No. 8988		

NEW 1984 CAMARO BERLINETTA	List Price	SAVE
	\$15,184	
	Invoice Amount	
	\$13,521	\$1,663
Stock No. 8872		

NEW 1984 MONTE CARLO	List Price	SAVE
	\$12,793	
	Invoice Amount	
	\$11,137	\$1,656
Stock No. 8226		

NEW 1984 PHOENIX VAN CONVERSION	List Price	SAVE
	\$21,339	
	Invoice Amount	
	\$17,189	\$4,150
Stock No. 1324		

NEW 1984 S-10 PICKUP	List Price	SAVE
	\$7,496	
	Invoice Amount	
	\$6,782	\$714
Stock No. 1408		

NEW 1984 CHEVETTE	List Price	SAVE
	\$5,280	
	Invoice Amount	
	\$4,965	\$315
Stock No. 9059		

NEW 1984 3/4 TON PICKUP	List Price	SAVE
	\$11,074	
	Invoice Amount	
	\$9,684	\$1,390
Stock No. 1438		



Mon. & Thurs. 9-9
Tues., Wed., Fri. 9-6

Dick Morris

"Your Favorite Metro Chevrolet Dealer"

2199 Haggery Rd. • Walled Lake • 624-4500