

today's hot line

Vol. 82, No. 89 52 pages, 4 sections

Guts & Patriotism

A small band of voters in the City of Farmington Tuesday displayed a lot of guts and patriotism. While many stayed away from the polls, a group of young adults entered the voting booths on wheel-chairs.

Page 2A

Why The Upset?

Today's local editorial page includes support for open study sessions and an analysis of Tuesday's election in Farmington Township. Although the supervisor's race is difficult to analyze there were a few clues which explain, in part, why the big upset took place.

Page 3A

Oakland Doings

Is Oakland County getting its fair share of state-retained road funds? What's the argument about the airport at Lake Orion? The Farmington Enterprise & Observer is expanding its coverage of Oakland County events.

Page 8A

Meet Elsie

You won't find many ministers like the Rev. Elsie Johns. The amazing story of Elsie and her Clarenceville church is in our church section.

Page 7B

How Carl Won

Roving Editor W. W. Edgar is an old acquaintance of Carl Pursell and got him to tell the inside story of his strategy in whipping State Sen. George Kuhn last week. Political writer Dennis L. Pajot talked to the loser and put together some fascinating statistics.

Page 1B

Amusements	88
Bowling and Business	48
Churches	6, 7B
Classified Want Ads	Sec. C
Deaths and Funerals	6B
Sports—Prep and Pro	4, 5B
Spotlight on Women	7A

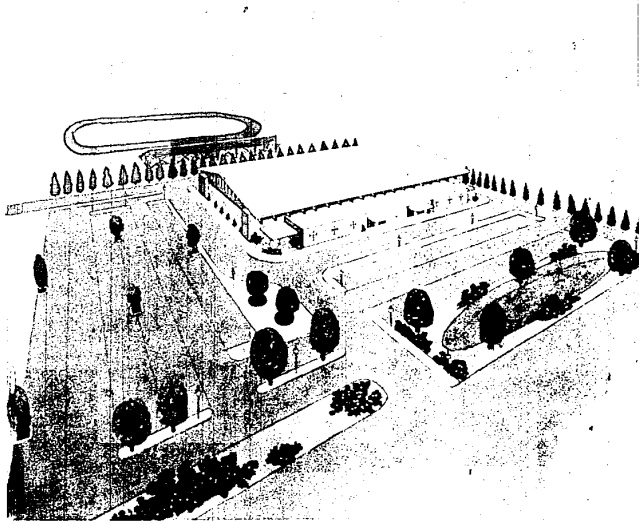
upcoming

LOCAL POLITICIANS are always taking polls, but how good are they? One good way to judge is to compare several different congressmen's polls, and that's what Dennis L. Pajot has done for next Wednesday's edition. You get this kind of sophisticated, broad-gauge coverage of suburbia only in your hometown paper.



Observer Want Ads
422-0900

Monday Is Second Unveiling Of City's Civic Arena Plans



PROPOSED CIVIC ARENA — Farmington city officials have proposed the construction of a \$1 million civic arena on the west side of Orchard lake just north of Shawwassee. The proposed facility would feature a skating rink with 3,000 seats, plus meeting rooms. A view is from the east side of the proposed building with Farmington High School's football field in the background. The site belongs to the Farmington School District but the city hopes to obtain the land for the project.

view is from the east side of the proposed building with Farmington High School's football field in the background. The site belongs to the Farmington School District but the city hopes to obtain the land for the project.

FARMINGTON
The second public presentation of plans for a \$1 million civic arena will be made Monday night to the Farmington Board of Education.

Appearing before the board in the administration building on Shawwassee west of Power will be John Richardson and Russell Ellis.

Ellis and Richardson will be carriers of the City of Farmington's request for the school district to donate six acres as location for the arena.

THE SITE IS on property of Farmington Senior High at the intersection of Shawwassee and Great Lakes.

Copies of a 24-page feasibility study were sent by the city this week to individual school board members.

The study was prepared by a three-man committee consisting of Richardson, city councilman; Ellis, a local hockey buff; and City Manager John Dinan.

The school board is not expected to make a decision Monday night, but spectators will have an opportunity to see an architectural rendering of the proposed arena besides hearing presentation of the feasibility study.

Byron Oliver, administrative assistant for Farmington Public Schools, told the Farmington Enterprise & Observer this week that the district has no future plans for the seven acres.

Presently a ball diamond occupies the site and would have to be relocated or eliminated if the land were donated for the arena, says Oliver.

The diamond receives heavy use from Little League teams.

The city, however, is quick to point out that Little League will not lose a diamond next season if the FIS diamond is removed, completion of the city Drake Rd. Park will see three ball diamonds added which would make two extra diamonds available even if the Orchard Lake field could not be relocated.

The school board probably will be willing to swap a ball diamond for its property. The board probably will, however, give much discussion to traffic flows, shared use of the arena with the district, and how the land should be given to the city.

DINAN HAS stressed that the arena cannot be built unless the property is donated because the cost of purchasing a site would be prohibitive.

The school board seems likely to be attracted to the project because the facility can be shared with the district, and the schools could capitalize on many of the arena's uses.

The most inviting bait is the arena which would be air-conditioned for year-round use and would seat 3,000 spectators, such as 3,000 parents and grandparents for a graduation ceremony.

The site plan shows a new parking lot for 300 cars with a connecting drive with the existing FIS parking lot holding 200 cars. Thus, for athletic events...

Continued on Page 4A

Eliminations Point Way To Nov. 3

FARMINGTON
Farmington Area voters turned out in larger than expected numbers for Tuesday's primary.

In Farmington Township, 7,612 votes were cast in the primary compared to the almost 19,000 registrations. The 41 per cent turnout was double the percentage expected by observers.

Other area wide contests, Southfield Democrat Leonard P. Baruch defeated Howard J. Fried 2,665 to 2,042 for the nomination to face Raymond Baker of Farmington for the 64th District state representative post. Baker, unopposed for the Republican nomination, received 8,884 votes.

In the Farmington Area, Baker received 841 votes from the city and 3,403 from the township. Baruch topped Fried in the township 674-546 and also in the city, 142-122.

Farmington Township voters also nominated three Republicans for three constable positions. The three who will be unopposed in the November general election, are Bernard Christy, Harold Resame and William Sonnenberg Sr.

Precinct delegates to county conventions elected by township Republicans include: Aletta S. Kroch, precinct 2;

Marian S. Lam, precinct 3; Wilbur H. Davis, precinct 4; Chiyono Van Dam, precinct 5; Raye Jane Wallen, precinct 6; Isabele W. Haynes, precinct 7; Harry H. Kelch, precinct 8; Elsa J. Harms, precinct 9; Phyllis B. Crump, precinct 10; Helen P. Davidson, precinct 11; A. G. Leigh LaChapelle, precinct 12; Lois E. Allen, precinct 13; Jack Berry, precinct 14; Raymond P. Pelletier, precinct 15; Milton E. Lichterman, precinct 16; Gerald S. Ellsworth, precinct 17 and Karen A. Eisenberg, precinct 18.

PRECINCT DELEGATES elected by township Democrats include:

Colen W. Hungerford, precinct 1; Robert Dennis, precinct 2; Kenneth M. Campbell, precinct 3; Rose V. Deli Bois, precinct 4; Katherine M. Reske, precinct 5; Robert E. Christie, precinct 7.

Fred L. Harris, precinct 9; Elizabeth O'Connor, precinct 10; Patrick J. Mulrooney, precinct 11; Aldo Vagnoni, precinct 12; Arlene E. Weitzman, precinct 13; Marie Mutschall, precinct 14; Harold T. Julian, precinct 15; Judith A. Holtz, precinct 16; Rodney G. Landsman, precinct 17; and Brian P. Olmsted, precinct 18.

Democratic delegates nominated from the city are John Cambell of 2370 Cass in precinct 1; Gerald Grace of 52229 Valley View in the precinct 2; Walter Christianson of 22408 Floral in precinct 3 and William Burke of 20940 Birchwood in precinct 4.



TOM ISLEY

Ex-Editor Tom Isley Dies Early Wednesday

FARMINGTON
Thomas F. Isley, of 3223 Oakland, a lifelong resident of Farmington and former editor of the old Farmington Enterprise, died Aug. 5 in Botsford General Hospital following a heart attack. He was 34 years old and most recently had been a staff writer for the Automotive News.

WHILE WITH the Enterprise, Isley had written a popular front-page column called "Around the Block."

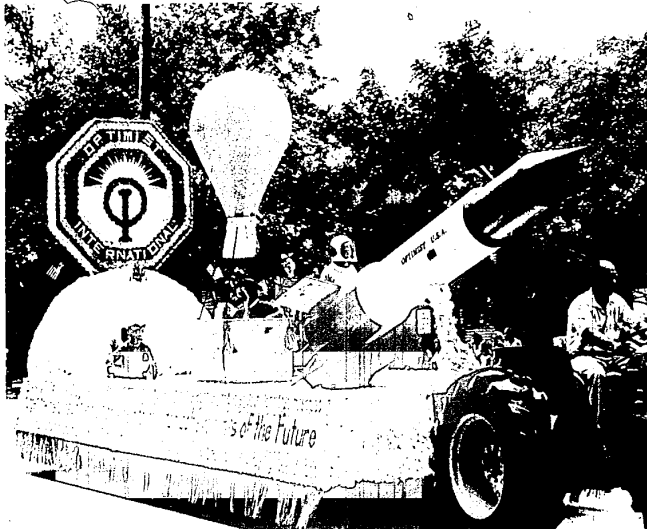
He began to work for the Enterprise while attending Farmington High School where

he graduated in 1934. He obtained a BA degree at Wayne State University in 1961 and was sports editor of the WSU student newspaper and a member of the varsity football team.

After leaving the Enterprise, Isley worked for the Neff Newspapers in Berkley, Troy and Clawson. He also was employed by the Pontiac Press and the Associated Newspapers in Wayne. He had been a member of the Farmington Presbyterian Church, Masonic Lodge 2 F & AM Detroit, was a Scottish Rite Mason and Shriner and Leading Knight of the Farmington Elks Club.

He was also a member of Lodge 1966 BPOE and the Detroit Press Club.

SERVICES FOR Mr. Isley were held today (Aug. 8) in the Henney-Sundquist Funeral Home with burial following in North Farmington Cemetery. Mr. Isley is survived by his mother, Mrs. Urban Ferraris of Farmington; brothers, George G. Isley of Poughkeepsie, N.Y., and Robert N. Isley of Dothan, Ala.; sisters, Mrs. Don E. (Mary Ann) Prior Jr. of Detroit, and Mrs. John T. (Nancy) Buck of Dayton, Ohio.



BIG WINNER—The Clarenceville-Farmington Optimist Club was the first place winner in float competition for the 1970 Farmington Founders Festival Parade. Theme of the float was "Forget the mistakes of the past, press on to greater achievements of the future." A picture of the float could not be immediately obtained for publication last week. The omission is regretted. (Event photo)