

## exhibitions

Continued from Page 2

### ● JEWISH COMMUNITY CENTER

Saturday, Feb. 16 — An exhibition of works by Jewish contemporary artists, "A Revelation," continues through March 6. It is organized and brought here by Danielle Peleg, former West Bloomfield resident and art dealer now living in Houston, Texas. Opening reception 7:30-10 p.m. Saturday, 6600 West Maple, West Bloomfield.

### ● SOMERSET MALL

Monday, Feb. 18 — "Images 6," a juried fine art show and sale by the members of the Creative Council continues through Feb. 24. This non-profit group regularly holds exhibits and sales to showcase the work of a talented membership. Open during regular mall hours, Big Beaver at Coolidge, Troy.

### ● DUKE GALLERY

Thursday, Feb. 21 — "Masters of French Poster Art" continues through Feb. 28. Included are selections from Les Maitres de l'Affiche and works by Mucha and Leont. Hours are 11:30 a.m. to 6 p.m. Monday-Wednesday, Thursday and Friday until 8:30 p.m., and Saturday until 3 p.m., 185 N. Woodward, Birmingham.

### ● DETROIT ARTISTS MARKET

Friday, Feb. 15 — "The Look of Things: Realism in Detroit" features works in a variety of media by 11 area artists. Reception 5-7:30 p.m. Friday. Hours are 11 a.m. to 5 p.m. Tuesday-Saturday, 1452 Randolph, Detroit.

### ● SOUTH MAIN MARKET

Saturday, Feb. 16 — One woman show of watercolors, mixed media works and collages by Paula Bass of Bloomfield Hills. A recent graduate of University of Michigan school of art,

she is represented by several out of state galleries and was recently in a show at the Jewish Community Center. Sponsored by the Ann Arbor Art Association, held in Ann Arbor.

### ● SHOWCASE DUGLASS

Monday, Feb. 18 — Bronze animal sculptures by Sharon Sommers of Rochester are on display through the month. The display, in Restaurant Duglass, is open to the public at no charge. Hours are 11:30 a.m. to 2 p.m. and 5 p.m. to midnight, 29269 Southfield, between 12 and 13 Mile, Southfield.

### ● SHELDON ROSS GALLERY

Paintings and drawings by Bearden, Beckmann, Kollwitz, Pechstein and Walkowitz are on display through March, 11 a.m. to 5 p.m. Tuesday-Saturday, 250 Martin, Birmingham.

### ● DETROIT INSTITUTE OF ARTS

Selected photographs from the permanent collection are on display at the Albert and Peggy de Salle Gallery of Photography through March 24. They range from 1894 to 1979 and include American, European and Japanese works. Hours are 9:30 a.m. to 5:30 p.m. Tuesday-Sunday, 5200 Woodward, Detroit.

### ● ART EXCHANGE

Mixed media by gallery artists continues through the month. Hours are 10:30 a.m. to 5:30 p.m. Monday-Saturday, until 8 p.m. Thursday and Friday, 415 S. Washington, Royal Oak.

### ● ORCHARD RIDGE CAMPUS

Black and white and color photos by the photography students of the Orchard Ridge and Southeast campuses of Oakland Community College are on display through Friday, 10 a.m. to 5 p.m. Monday-Friday, Smith Theatre

Gallery, 27055 Orchard Lake Road, Farmington Hills.

### ● SELO/SHEVEL GALLERY

"Michigan Ceramics '85," the annual statewide juried exhibition sponsored by the Michigan Potter's Association continues through March 2. Regular hours are 10 a.m. to 6 p.m. Tuesday-Saturday, until 9 p.m. Friday, 329 S. Main, Ann Arbor.

### ● BIRMINGHAM BLOOMFIELD ART ASSOCIATION

Student and member exhibition will continue through March 2. Jurors for the multi-media competition were Sergio DeGiusti and Bill Tall. Victor Klein Family Purchase Award to be presented to the city of Birmingham is selected from this exhibit. Regular hours are 9:30 a.m. to 4:30 p.m. Monday-Saturday, 1518 S. Cranbrook, Birmingham.

### ● RUBINER GALLERY

Paintings by gallery artists, Larry Zox, William House, Carol Sutton, Susan Crile and Charles Robb are on display with a group of newcomers, Richard Hogan, Ken Christopher, Jean Thorne and Susan Copely. Hours are 10 a.m. to 5:30 p.m. Tuesday-Friday, until 5 p.m. Saturday.

### ● ROBERT L. KIDD ASSOCIATES

Wall sculpture by Lyman Kipp and ceramic sculpture by Roy Strassberg are on display through March 7. Opening reception 3-6 p.m. Saturday. Kipp pursues a new direction with painted, steel sculptures emerging from the wall. Strassberg's "Demolition Vessel Series" unites painterly imagery with powerful white clay structures.

News that's closer to home



**BLOOMFIELD-BIRMINGHAM**  
Exceptional 4 bedroom, 3 1/2 bath custom built contemporary in the Maple/Franklin Rd. area. Parklike setting on large lot with private pond plus Walnut Lake privileges. Over 3,200 sq. ft. of precious living. Beautiful family room with picturesque glass window views overlooking natural settings, 3 car garage, many features. Asking \$209,900.

**SOUTHFIELD - BEACON SQUARE**  
Mini condition on this 5 bedroom totally updated and remodeled brick colonial. All new Furnace kitchen features top quality built-ins, family room with fireplace, extensive use of mirrors and custom lighting. Cozy drywall and carpeted recreation room, attached garage, covered summer terrace with barbecue. Asking \$79,900 with terrific assumable mortgage. Seller moving soon. Be sure to see!

**559-3344**  
**Pomeroy Realtors**

**THE LAST OF A LEGEND.**

Advance Reservations Now Being Accepted on our **FINAL PHASE**

UNIQUE 1 & 3 BEDROOM CONDOMINIUMS IN WEST BLOOMFIELD. PRICED FROM \$85,900

**MAPLE PLACE**  
MAPLE RD. 500 FT WEST OF DRAKE

FOR INFORMATION CALL 336-7841 EXT. 101 - CLASSIC CONSTRUCTION CORPORATION

## IT TOOK A PERFECTIONIST TO BUILD THE VILLAGE



### THE SUMMIT ROMANTIC RANCHES

One of the extraordinary plans you'll find in The Village, a new community of superb condominiums in an incredibly lovely secluded pocket of privacy. See this and other innovative exciting models at The Village. From \$119,900 to \$199,900. Models furnished by Englander's. Open noon to 6 p.m., everyday except Thursday.



The Village is located off 14 Mile Rd. west of Orchard Lake Rd. Enter through the gatehouse at Potable Creek. Sales Information: 851-3500. Main Office: 626-3500. Sales by:



Observer/Examiner  
**classified ads**  
Wayne County  
Oakland County  
614-1070  
Rochester/Avon  
852-3222

### CANCER NOT KNOWING THE RISKS IS YOUR GREATEST RISK.

A lot of people think cancer is unbeatable. That simply isn't true. In fact, over two million people have had cancer and survived to lead happy, normal lives. And not only can cancer be beaten, it can also be prevented. There are definite precautions that have been proven to decrease your risk of getting certain cancers. Ask your local American Cancer Society to send you a free booklet about cancer risks. Learn the facts about cancer. And make not knowing the risks, one less risk.



How you live may save your life.

GRAND OPENING • GRAND OPENING • GRAND OPENING

In the Hills of West Bloomfield

## The MANOR HOMES at Aldingbrooke

For purchase:

2 and 3 bedroom detached condominium homes of extraordinary quality and character.

Aldingbrooke is a private estate-like community situated on over 130 spectacular acres of pond, trees and rolling hills. Entry is off Drake Road, between Maple and Walnut Lake Roads, through the 24 hour monitored gatehouse.

Priced from \$134,900. 12 1/4% Fixed Rate Mortgages are available.

661-1750

The Manor Homes at Aldingbrooke are open for your inspection daily. From 12-6 P.M.

Broker participation invited.

GRAND OPENING • GRAND OPENING • GRAND OPENING



**WEST BLOOMFIELD** proudly presents quality Contemporary backing to private park. Cathedral ceilinged foyer, stone floor to ceiling fireplace, library, gourmet kitchen. 626-9100. \$189,900.



**CHAMPAGNE TASTE!** This stunning contemporary Tudor nestled on private park commons features exquisite interior decorating, gorgeous landscaping. Library, fireplace, family room, formal dining room. 626-9100. \$171,000.



**TRANSFER FORCES SALE.** Cul-de-sac location for this Farmington Hills Colonial with 4 bedrooms, gourmet kitchen with bay window, family room with wet bar, library. 626-9100. \$118,500.



**GORGEOUS FAMILY COLONIAL** in prime Farmington Hills. Fantastic lot backing to woods. Neutral decor is featured throughout, 4 bedrooms, family room, fireplace, central air. 626-9100. \$104,500.



**CUSTOM BUILT Lake Ravine Ranch** on an acre lot features ideal floor plan with 3 bedrooms, 2 1/2 baths, family room. Neutral decor. 626-9100. \$139,000.

### BIRMINGHAM

975 S. Hunter at 10 1/2 Mile Rd.  
646-6000

### BLOOMFIELD HILLS

1520 N. Woodward at Long Lake Rd.  
647-5100

### FARMINGTON HILLS

3100 Northwestern at 13 Mile Rd.  
626-9100

### TROY

5017 Rochester Rd. at Long Lake Rd.  
689-8900

### ROCHESTER

1000 W. University at Love Pine Rd.  
651-8850

### WEST BLOOMFIELD

4315 Orchard Lake Rd. at Love Pine Rd.  
851-8100

OPEN MONDAY-FRIDAY 9 A.M.-9 P.M., SATURDAY 9 A.M.-5 P.M. OPEN SUNDAYS



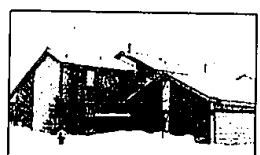
## Merrill Lynch Realty



**EXPANSIVE WOODED LAKEFRONT CONTEMPORARY** on private setting with wooded lot. Superbly designed with the ultimate in conveniences, indoor hot tub, saunas. 851-8100. \$459,700.



**WELCOME TO RAMBLEWOOD!** Elegant custom Colonial backing to park commons with pond, 4 bedrooms, library with cathedral ceiling, gorgeous gourmet kitchen, family room with beamed ceiling. 626-9100. \$215,000.



**WEST BLOOMFIELD CONDO** with contemporary, neutral decor and track lighting offers 2 story living room, 3 bedrooms, 2 baths, 1st floor master suite. Central air. Also for lease. 626-9100. \$129,900.



**WEST BLOOMFIELD** presents this charming Quad-level with privacy plus. Family room with full wall fireplace, library with half bath. New roof in 1983. 851-8100. \$92,000.



**DARB LAKE PRIVILEGES.** Cheerful ranch in country setting offers master bedroom suite, central vacuum, 6 panel doors, more! 851-8100. \$86,500.



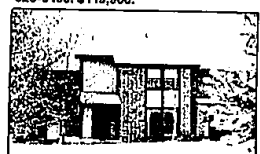
**SPACE FOR EVERYONE!** Unusual contemporary with 4 bedrooms. Spiral staircase to lower level with extra kitchen. 5 doorways, family room, deck. 851-8100. \$79,900.



**SHARP NEW CONTEMPORARY** in prime North Farmington. Fantastic great room with marble fireplace, large almond formica kitchen, beautiful master suite with dressing area. 626-9100. \$139,900.



**FARMINGTON SCHOOLS.** Large wooded lot provides privacy for 4 bedroom contemporary with 2 full remodeled baths. Library, family room, fireplace. Large 20x13 workshop. 626-9100. \$119,900.



**GORGEOUS TOWNHOUSE** in excellent location offers 2 carports and extra parking! 3 bedrooms, fireplace, family room, fenced deck with fountain. 626-9100. \$77,900.



**CUSTOM BUILT RANCH** with lots of extras. 3 bedrooms, fireplace, finished lower level perfect for teen-age or in-law suite. Call today for terms. 626-9100. \$124,500.