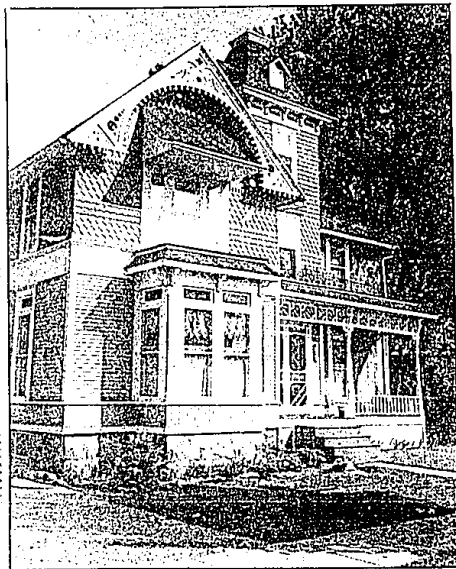


# Tour packed with variety



The Victorian parlor of the home, which took Sylvia and Joseph Garcia two years to renovate, is furnished with antiques of the period. In contrast, the other seven tour homes run from a modern three-level condo to country, Tudor and French provincial.



While the pot boiled stove and the gas lights have been replaced in the Joseph Garcia home, many other original features have been carefully preserved.

Staff photos by Bill Bresler

By Elinor Graham  
staff writer

The Plymouth Symphony League's 1985 home tour has been tagged "A Home for All Seasons," for the biennial event has a new twist this year.

The eight homes on display are not confined to the usual "rich and the beautiful," although that category will not be ignored. Three exceptionally elegant houses in the rolling hills of Plymouth Township are on the tour.

What had been added is variety — complementing lifestyles of young professionals, singles, newly marrieds, couples with starting families and retirees.

Contemporary condominiums in a secluded wooded area have an appeal for singles, young marrieds and those looking forward to a serene retirement.

The East Lake Victorian house was built in old Plymouth in the 1880s by a transplanted New Englander. A hideaway apartment over Emma's Restaurant in downtown Plymouth has an unexpected roof garden. A quaint frame house built in the 1920s has been carefully renovated, making it the perfect starter home for newlyweds or for empty nesters. And the country home created by a couple with a small daughter is a real charmer.

**THE HOUSES** were selected with an eye for beauty — homes for all seasons of life — filled with ideas to inspire and admire.

Hours for the two-day tour are 10 a.m. to 5 p.m. Friday, June 7 and noon to 5 p.m. Saturday, June 8. Admission is \$7.50 and tickets may be purchased in advance in Plymouth at me and mr. Jones, Beltners Jewelry and Kober's Rite Shoes; in Canton Township at Book Break; in Northville at Orin Jewellers, or by calling 483-5191. Mail order tickets are available until May 31 by writing to: Home Tour Tickets, 11808 Beacon Hill Drive, Plymouth, MI 48170.

Special home tour attractions have been arranged by the league.

Each of the homes will be accented by an antique car in the driveway. Refreshments will be provided in the garden of one of the stops. Ticket holders will receive discounts on meals, June 1-8, at several of Plymouth's fine eateries, Plymouth Landing, Hillside Inn, Emma's, Dairy King, Ann Arbor Road House and the Mayflower Hotel.

Tour guests will have an opportunity to win an item that reflects the personality of some of the homeowners: reproduction of an oak curio eight-day grandfather clock, a Baldwin brass candlestick lamp with pierced shade, a face cord of apple firewood, a signed designer natural cotton/linen wall-hanging, a 24-inch cut-glass circular panel by Tim Iovan, and a plant.

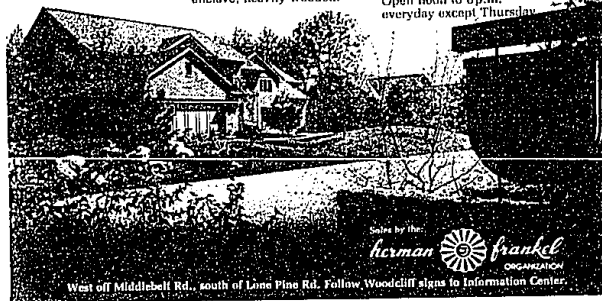
## Woodcliff...

### Incomparable Cluster Condominiums

These innovative cluster condominiums were created to indulge every fantasy of modern living. Spacious, multi-use living areas have ever-contemporary accoutrement to pamper you. Woodcliff is an incredibly beautiful private enclave, heavily wooded.

Only 26 of these spectacular homes will be built—and half are already sold. So please visit Woodcliff. Because you deserve it.

2 and 3 bedroom cluster condominiums from \$249,000  
Model phone: 626-3502  
Main Office: 626-3500  
Open noon to 6 p.m. every day except Thursday



Sales by:

herman frankel  
ORGANIZATION

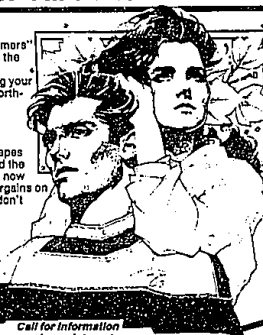
West off Middlebelt Rd., south of Lase Pine Rd. Follow Woodcliff signs to Information Center.

To all the  
**YUPPIES  
YUMPIES  
& YUMMIES**

We say...  
the good life can be  
a smart investment too!

Join the many "Baby-Boomers" that always seem to make the right moves and wise investments by purchasing your own vacation property. Northern Michigan, the best of Winter and the best of Summer, an "endless" vacation. Save time and money by viewing video tapes of all our properties to find the area of your choice. Right now there are unbelievable bargains on Northern properties...so don't delay.

Exclusive!  
Properties  
available  
on video  
tape



Call for information  
and appointment

OWN YOUR OWN  
PIECE OF  
NORTHERN MICHIGAN  
There's no  
other investment  
like it!

- Enjoy it
- Watch it grow in equity
- Rent it out...gaining tax write offs

100's of properties  
to choose from  
- Great terms!

**INTEGRITY REALTY**

**851-2870**

7001 Orchard Lake Rd.  
West Bloomfield (Bet. 13 & 14 Mile Rds.)

## WE'VE GOT A LITTLE LIST...



North Park Place  
has no apartments  
to rent...at  
the moment.

But smart  
people are  
putting their  
names on a  
waiting list.  
Shouldn't  
you come  
out and  
see why?

2 and 3 bedroom  
luxury apartments  
in Southfield from \$345  
Phone: 559-4588

**NORTH PARK PLACE**

Managed by Sullivan Smith, Inc.

## HOMES WITH

349-2980

## ACCENT

Lakes of Northville

A unique blend of traditional and contemporary homes... Accented with Spectacular Vaulted Ceilings, Open Foyer Balconies, Handcrafted Woodwork, Including Designer Kitchens and Baths.

**GRAND OPENING**  
ASK ABOUT SPECIAL GIFTS!!!



Located in the rolling hills of Northville, each home reflects its natural beauty, with special attention given to custom features and design. Experience the joy of watching us creating your dream come true.

Colonials, Ranches,  
Cape Cods from

**\$119,900**

Models Open Daily 1:00 to 7:00  
Weekends 1:00 to 6:00  
Call Debbie Brown 349-2980

Built & Developed By:  
FASB Custom Builders  
Elbak Construction Co.

Custom Homes from Your Plans or Ours.		
7 Mile	1	
6 Mile	2	
5 Mile	3	
4 Mile	4	
3 Mile	5	
2 Mile	6	
1 Mile	7	

Sales by  
**ACCENT MARKETING SERVICE, INC.**  
Concepts in Creative Living



**NOVI**  
**Dunbarton Place**

Prices starting at  
**\$107,900**  
12% FIXED 15 YEAR  
& 12.4% FIXED 30  
YEAR FINANCING  
AVAILABLE

new exciting  
floor plans  
24  
new exciting  
elevations...  
in a prestigious  
hill setting

All homes totally energy efficient, bricked & sided, insulated wood windows, fireplace with raised hearth, fully carpeted and many, many more features.

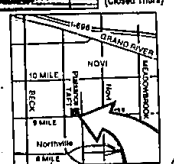
Immediate  
Occupancy  
on Selected  
Homes

Minutes to  
TOANS MALL  
CLOSE TO  
EXPRESSWAYS

Take 9 Mile Road  
West, Past Novi  
Road to Palisades Blvd.  
(1/4 Mile)

OFFICE  
851-8940  
MODELS  
349-8969

**dunbarton building company**



**DRASTICALLY REDUCED TO  
Below Our Cost  
FROM \$1,150,000 TO \$898,000.**



1711 Morrisonside Way, Bloomfield Hills

The most magnificent residence in Wabook is now available at a great reduction in price. WE MUST SELL!!

**MALCOLM LEVENTON CORP.**

**424-8702 • 559-5492**

OPEN SUNDAY 1-5 P.M. or by APPOINTMENT

Long Lake Rd. to Wabook Lake Drive East to Indian Summer to Morrisonside Way.

What became a  
legend in 1984?

Maple Place  
condominiums.

What is destined  
to become a legend  
in 1985?

Maple Place Woods  
Watch for it!

**MAPLE PLACE  
WOODS**

CLASSIC CONSTRUCTION CORPORATION  
FOR INFORMATION CALL 559-7954 or 661-2650