

True heroism

It's much more than just being 'macho'

MALNESS IN AMERICA has traditionally been defined in terms of strength, and strength itself has generally been defined in terms of toughness. Despite the lessons we learned in elementary school, the classical American hero is not Benjamin Franklin or Abraham Lincoln.

Our prototype hero is more likely a figure like Billy the Kid, the grinning gunslinger who mows down his enemies without a remorseful wince or the merest whisper of regret. He stands alone, aloof, above the striving and the stress of human emotion.

Our fast-shooting, slow-talking hero has been updated in recent years, but alterations in his appearance seem to have changed little else in him. He remains the same — decade after decade, movie after movie, TV series after TV series.

He has come to us as: the man in the uniform, protecting his country in a jet fighter in the lonely duel at 40,000 feet; the football hero surrounded by a huddle of admiring coaches; the police detective who manages to protect society by spraying bullets in the direction of his enemies; the former G.I. who returns to Vietnam in a valiant effort to annihilate the wicked and rescue the oppressed.

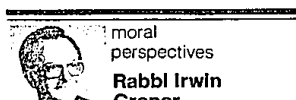
THESE POPULAR images reveal something to

GOP names pair of leaders

The Republican Committee of Oakland County has added two new appointments in charge of recruitment and finances.

Chairman Joe Knollenberg has named Thomas L. Schellenberg, a Birmingham attorney, to coordinate recruitment. Weldon O. Yeager, chairman of a worker's compensation, group health and liability firm, was placed in charge of finances.

Schellenberg will serve as the main recruiter for



moral perspectives
Rabbi Irwin Groner

us about ourselves which is disturbing and unsettling. In our gallery of hero imagery, there are few suggestions of compassion, tenderness or spiritual depth. Males appear as flawless models of physical strength. There comes a time when we must ask ourselves whether this definition of maleness should be our definition.

There is ample psychological evidence to show that man who expresses himself as hunters, killers, and risk-takers are not always the people who show bravery in life's more meaningful moments, or who possess an authentic inner strength.

The most difficult bravery is moral bravery. After all, there are bullies who are really cowards and the capacity to kill another human being is not a sign of moral achievement.

In his book, "Courage," General Slim, who had commanded Allied Forces in Burma during World

War II writes: "Moral courage is much higher and rarer than physical courage; women and civilians often exhibit more courage of this kind than the bravest combatants."

AS THE hostage drama continues to unfold, I would nominate for courage and bravery the men and women who have endured and are continuing now in enduring the terror of their captivity. The hijackers, with their guns and grenades, are despicable and worthy only of contempt.

It is not easy to be courageous, as was the stewardess on the plane who challenged the hijackers, when one is defenseless and vulnerable.

Unfortunately, our modern definition of masculine strength is centered on the exercise of physical, not spiritual, prowess. Actually, true heroism should not always be pictured as the result of the spectacular feats of the sportsmen, outdoorsmen, policemen, or even soldiers in battle.

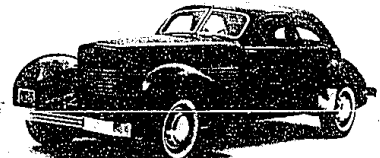
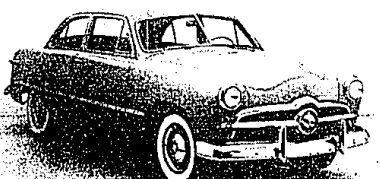
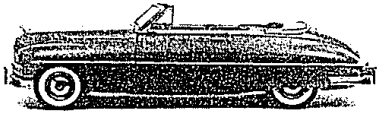
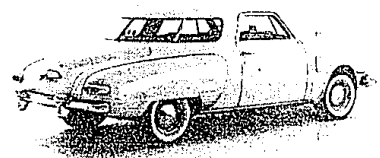
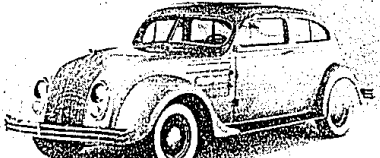
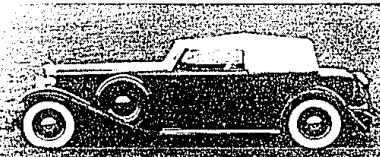
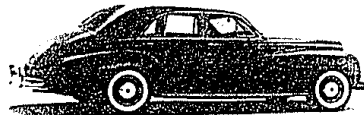
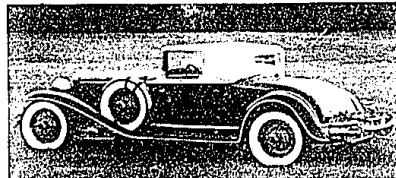
In the deepest sense, true heroism is demonstrated by the man who lives up to his personal obligations and his highest responsibilities in a consistent and exemplary manner. He meets the challenge of moral temptation with the integrity that comes from spiritual courage.

SYDNEY HARRIS, in his book "On The Contrary" puts it this way: "Being a man has little to do with stalking deer in a woods or shooting ducks in a blind; these are . . . not tokens of manhood.

But continuing to work when you are tired, assuming duties when you would rather toil, making sure the nest is safe and warm and that the future holds promise of continuity and growth — these are the unrelenting demands modern society makes upon its grown men."

How well and how willingly we measure up to these demands — unheroic in a dramatic sense, but more difficult in many ways — is a more accurate criterion for separating the he-men from the he-boys."

Cars and the Art They Inspire



Automobile and Culture Detroit Style

The Detroit Institute of Arts
June 12-September 8

The exhibition is open during regular museum hours: 9:30 a.m. to 5:30 p.m. Tuesday-Sunday; closed Mondays, holidays. FREE ADMISSION.

THE DETROIT INSTITUTE OF ARTS
100 Woodward Avenue
(313) 833-7900

This exhibition has been made possible by the generous support of TIME The Weekly News magazine with the assistance of the Founders Society Detroit Institute of Arts. The exhibition Automobile and Culture was originated by The Museum of Contemporary Art, Los Angeles, with generous assistance from the Los Angeles Olympic Organizing Committee, Ford Motor Company, Fiat S.p.A., Renault, and General Motors Foundation.

Take advantage of the summer and capture your love story.....

FOX PORTRAIT STUDIO'S
"Our Love Story"

Photographic package: One 8x10 and Four 5x7 in a beautiful multi-mood folio for only \$99.95.

Meet us at a park or some other scenic location to recall those precious moments. Call

Fox Portrait Studios
Ferndale: 544-1110 Northville: 348-0303
Detroit: 526-2220 Mt. Clemens: 468-4900
Allen Park: 383-8803

The finest shopping under the sun.

DOWNTOWN WINDSOR WEEKEND

CLOSED JUNE 30 - JULY 14

To our employees & their families

Ditrich
BLOOMFIELD
Dependability Since 1933

Waterbed Gallery EXTENDED

GREATEST SALE EVER

SAVE ON DISCOUNTS, COUPONS, LOTS OF STOCK—LIMITED QUANTITIES

\$199 SPECIAL

INCLUDES: Solid Pinewood Floor Frame, Quality Mattress, UL-rated Electrical Safety Liner

EXCEPTIONAL 4 AND 6 FOOT SIZES AVAILABLE. PROCEDED, FOLD DOWN & WASHED WITH

1 HOUR DELIVERY TO 6 PM

CALL TODAY FOR A FREE FLOOR SALES LAYOUT

100 West Long Lake Road, West of Telegraph 468-0973

OMEGA
PRECISION
MOVEMENT

Get the kind of precision NASA demands. This watch—the Omega Speedmaster—keeps perfect time, even in zero gravity. That's why astronauts have worn it in space and even on the moon. Precise. Reliable. For all your adventurous moments. \$695

fredrick jewelers
of BLOOMFIELD HILLS

100 West Long Lake Road, West of Telegraph 468-0973

Hurry in for the best selection.

OUR MAJOR CLEARANCE IS GOING ON RIGHT NOW!

BECKWITH EVANS

ALL-OUT CARPET CLEARANCE

OVER \$2,000,000 WORTH OF FINE QUALITY CARPETS AND RUGS! EVERYTHING IN STOCK

25% to 75% OFF!

TO MOVE 'EM OUT FAST!

From Galaxy! NYLON CUT 'N' LOOP 4 color, 8 1/2 yds. Special purchase \$19.99 set! \$5.99	From Alexander Smith! RICH VELVET PLUSH 100 yds. 100% wool. 100% wool. 100% wool. 100% wool. \$12.99	From Leest! HEAVY SCULPTURE We do no longer stock this set. Buy now! \$10.99	Extra Durable! LYNOL BERBER Popular choice. 100% wool. 100% wool. 100% wool. 100% wool. \$6.50
Special Purchase! DEEP NYLON SAKONY See industry's best. 100% wool. 100% wool. 100% wool. 100% wool. \$5.50	From Leest! LOVELY CUT 'N' LOOP 100 yds. 100% wool. 100% wool. 100% wool. 100% wool. \$7.99	From Cable Oriental! ANTHRON NYLON PLUSH Special purchase. 100% wool. 100% wool. 100% wool. 100% wool. \$7.99	From Karastan! MAGNIFICENT TRACERY Antic IV. 100% wool. 100% wool. 100% wool. 100% wool. \$12.99
Over 2,000 sq. yds. of COMMERCIAL CARPETS Various styles and colors. Regular \$4.99 to \$9.99 sq. yd.	12'x12' to 12'x12' SMALL REMNANTS Original values \$6.49 to \$12.00. Clearance price. from \$9.99 and up	12'x12' to 12'x12' LARGE REMNANTS Huge group. Original \$14 to \$299. Now clearance price. \$39 to \$129	Everyone's one hour! AREA RUGS Including up to \$120.00. Original prices. 70% off. \$10.00 to \$130.00. 40% to 75% OFF!

BECKWITH EVANS
FINE FLOOR COVERINGS

SEE SAMPLES IN YOUR HOME

CALL COLLECT (313) 845-7000

SPECIALIZING IN COMMERCIAL INSTALLATIONS

Call Center
Cable Dept.
(313) 845-7000

NORTH / TROY WAREHOUSE: 100 S. Maple Road, East of Livernois 845-7000
PLEASANT RIDGE: 24242 Woodward, South of Ten Mile Rd. 547-7100
EAST / CLINTON TOWNSHIP: 24220 Grand at 15 Mile Road 292-9910
EAST / M.E. RD.: 16528 E. 8 Mile Rd., East of Eastland 371-7910
WEST / FORD ROAD HEIGHTS: 24430 Ford Rd., West of Telegraph 274-7990
TROY: 23175 Woodward Rd., West of Wayne Road 282-8800
REDFORD: 23001 W. 8 Mile Rd., 2 1/2 mi. W. of Telegraph 288-3950
SOUTH / TAYLOR: 23077 Eureka Road, Across from Southland 287-2850

STORE HOURS: MONDAY-FRIDAY, 10 am to 9 pm - SATURDAY, 10 am to 6 pm - SUNDAY, Noon to 5 pm