

Every creature has its special beauty

This is another lesson on art and drawing by special columnist David Messing. He has taught for ten years and operates an art store, Art Store and More, 16338 Middlebelt, Livonia, 522-6311, 265 N. Main Street, Plymouth, 455-1222. Messing encourages questions and comments from readers. You may write him at his store or c/o Observer Newspapers, 23352 Farmington Road, Farmington, MI 48024.

By David Messing
special writer

You have probably wondered as I have, "why were June bugs created?"

artifacts

mean they are so dumb. Mosquitoes... now those are smart bugs. They will easily land on your neck, drill a little hole, steal some blood and then as a testimony to their cleverness they'll leave a little red calling card just to remind you of their recent visit. Even if you feel one land on your neck, it will dart and zig safely away leaving you, the victim, slapping at your own neck and head.

Then here comes a dumb June bug. It sounds like a B52 airplane and you better duck cur the dummy is going to run straight into your face. I always take spiders and bugs carefully out of the house because I hate to kill them, but

June bugs, that's another story.

I don't mind telling you I'm so frightened of an airborne June bug, that I run in the other direction. When I was younger, I was taking a date home for the evening and as we walked up to her house a June bug made a kamikaze dive straight at my face. When I ducked to get out of the way, I bit my chin on top of the gate, that I was opening for my date. I'm sure she was impressed as I bit through both sides of my lip and broke my chin. I am not sure, but I think June bugs were created to run into your screen doors at night and then lay upside down on your porch until you step outside barefoot and accidentally crunch them.

IN EVERY creation (except June bugs) I see a beauty or at least a functional beauty. I both wonder and marvel at certain qualities or characteris-

tics in every living creature. As an example there are many creatures of unquestionable beauty. For instance, look how vivid the colors are on the dusty wings of a butterfly, or one is almost hesitant to accurately portray the brilliant colors of some exotic birds.

Who could improve the patterns or colorations on tropical fish? Then there is what I call functional beauty, like the iridescent plate-like armor of a dragon fly, whose pulsating wings allow him to halt stationary as we, perhaps, each pause to consider the other.

The skin of a walrus is a maze of wrinkles and folds, all accenting its position and it is no less beautiful than the patterns of skin orbiting the nostril of a water buffalo's snout. A horse is purely a study in grace and strength, all functional and likewise beautiful. Certainly any member of the wild cat family almost universally evokes feelings of awesome strength and beauty. But the vulture who cleans up after the lions kill is also a creature of functional beauty. The head and neck of a vulture is just bare skin because often they must place their heads deep into a carcass to retrieve a tender morsel.

"Gross" you are thinking? "Ugly," maybe is your first thought? But if you draw, paint or sketch a vulture you too may be converted to the attitude that enhances me daily, which is: "In all things created there is a certain beauty that challenges me for representation. Whether it is indeed beautiful or beautiful in its function, I will greatly benefit in the attempt to render it and when rendered I will have learned much from it and perhaps forever appreciate it."

So in rendering we learn to look and in looking we study the subject. Color, texture, shape and inner shapes nothing can be drawn by the hand that is not first seen by the eye and understood by the mind. Here again a definition seems to say it all. To understand, to achieve the grasp of the nature or significance of something.

So as we understand we render and therefore appreciate.

BECAUSE GOOD art requires understanding, it is a particular joy for me to teach anatomy and life drawing to my students. Of all creations nothing is more beautiful than the human body.

What a challenge it is to make a two dimensional image capture the spirit, life and physical characteristics of a human being. With the proper understanding there are no "ugly" people just as there are no ugly animals. Thin, fat, tall, short, old, young, male or female all people are fascinating and likewise challenging. It is also refreshing to leave the shallow commercial approach that advertising has towards the human body and enter the mental framework of the artist.

Who looks more at muscle, bone, proportion and the play of light across the body. The artist is fascinated by the structure and balance of the human form. In any position, from any angle the subtle curve and recurve of the spine, the tip of the hips and shoulders, the length and position of the legs, the business of the hands and feet etc. All of which offers an unending challenge for representation.

So accept the challenge that every living creature offers and you too will find yourself mentally booking rendering dates with a flamingo, butterfly or just about anything... yes, I guess, maybe even a June bug.

Royal Oak hosts art fair

The 15th annual Royal Oak outdoor art fair will be held 11 a.m. to 6 p.m. Saturday and Sunday in Memorial Park, Woodward and Thirteen Mile, Royal Oak.

There will be 80 Michigan and out-state artists in the juried show with paintings, sculpture, pottery, photography, jewelry, weaving and works of

glass, wood, metal and leather.

Food and beverages will be available and there is no admission charge. Fair goes on, rain or shine.

The fair is sponsored by the Royal Oak Department of Recreation and Public Service, and the Royal Oak Arts Council.

DINE OUT TONIGHT



MAGNIFICENT COUNTRY ESTATE HOME nestled on ten acres of rolling, wooded terrain in Metamora. This home has been built in the highest of standards with exact architectural detailing throughout, reminiscent of the Georgian period. Large open rooms with high ceilings, 3 fireplaces, modern kitchen, 5 bedrooms and 5 1/2 baths. Beautiful woodwork and plaster detail throughout, including top quality windows with marble sills. Extra amenities include a well maintained in-ground pool, attached 3 car garage with asphalt circle drive, hilltop setting with expansive view of grounds, mature pine and flower. Zoned for horses with added advantage of hunt club within walking distance. Owner is serious. Financing available. \$245,500
MARGE HENRY REALTOR CALL 678-2448

You're living on top of the World. Ridgecrest at the Park



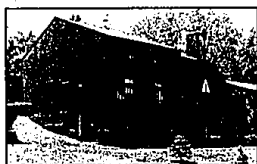
High above an established community of luxurious homes is an enclave of six exceptional homesites. Heavily wooded with a breathtaking tree-top view, these sites will be built with new home plans that preserve the natural contours of the land. Crafted by The Herman Frankel Organization, these homes contain innovative features, exciting details and spectacular views. Information is available now for Ridgecrest at the Park and other homes in The Park at Bloomfield Lake.

There are only 6 homesites on the ridge. See the new Ridgecrest model. From \$259,000. Model Phone: 626-3502 Main Office: 626-3500 See other models in The Park at Bloomfield Lake from \$249,000 (Bloomfield Hills Schools) The Park can be found west off Middlebelt Rd., south of Lane Pine Rd. Follow Woodcreek signs to information Center. Open noon to 6 p.m. every day, except Thursday. Sales by:

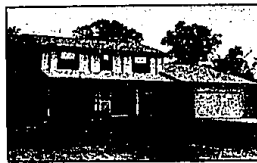
herman frankel ORGANIZATION



Merrill Lynch Realty



IMMACULATE CONTEMPORARY on Cass Lake includes two fireplaces, Jenn-Aire, built-ins. Master bedroom loft with bath and deck. Great Room leads to deck. 851-8100. \$239,900. (CWO)



CUSTOM COLONIAL on large treed lot in newer Farmington Hills subdivision. Features ceramic foyer, patio off paneled family room, fireplace, library, and first floor laundry. 626-9100. \$134,900. (KFI)



IMMACULATE TUDOR features library with built-ins, spacious fireplace family room overlooking patio, paneled basement. Sprinkler system, central air, immediate occupancy. 626-9100. \$122,900. (WFA)



BEAUTIFUL VIEW OF Walled Lake from spacious 2 bedroom condominium. End unit includes storage, neutral decor, formal dining, family room. Bright unit, immediate appliances. 851-8100. \$115,900. (WWA)



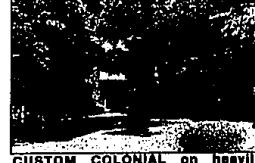
FAMILY SIZE COUNTRY kitchen with snack bar in this newer Ranch. Full wall fireplace in family room with cathedral ceiling. Full basement with bath, central air. 626-9100. \$79,900. (APV)



LAKE FRONTAGE on Lake Sherwood! Superb ranch boasts extra details. Many new updates, rec room, formal dining room, sauna, dock too. 626-9100. \$199,900. (SFL)



SPACIOUS COLONIAL on lovely treed lot. Master suite has stepdown sitting area, bow window, storage loft. Family room with wet bar. Over 3,000 sq. ft. Bloomfield Hills Schools. 626-9100. \$169,900. (BFU)



CUSTOM COLONIAL on heavily wooded lot in West Bloomfield includes library with wet bar, large fireplace family room with wet bar, bar-b-que. Central air, sprinkling system. 626-9100. \$119,900. (KFE)



EXCEPTIONALLY MAINTAINED tri-level in park-like setting. Double closets in master bedroom, family room with private patio, bright kitchen with plenty of storage. 851-8100. \$112,000. (LWE)



LOVELY TREED LOT accents sharp 4 bedroom ranch with formal dining, finished basement, formal dining. Neutral carpet, porch, central air, 2 car garage. 626-9100. \$64,900. (RFE)



ULTRA CONTEMPORARY on Cass Lake. Solar heating features, 6 bedrooms, 4 baths, natural oak floors, skylights, vaulted ceilings. Over 6,500 sq. ft. in prime West Bloomfield School District. 626-9100. \$950,000. (IFB)



CHARMING DUTCH COLONIAL on private treed lot includes many quality extras selected by the builder-owner. Family room with built-ins, heatolator, more. 626-9100. \$142,900. (TFH)



WILLIAMSBURG COLONIAL has features for everyone. First floor laundry, private library, formal bay windowed dining, fireplace family room. West Bloomfield Schools. 851-8100. \$129,700 (FWO)



WALK TO WALNUT LAKE from spacious Ranch in popular subdivision of West Bloomfield. Fireplace living room and family room, skylights throughout. Near schools. 851-8100. \$89,000. (BWU)



FARMINGTON HILLS RANCH includes spacious deck off family room for superb view of lovely yard. Natural fireplace, finished recreation room with full bath. Central air. 626-9100. \$86,900. (TFE)

BIRMINGHAM

626-5 Buyer
at 11:30 M-F Sat
646-6000

BLOOMFIELD HILLS

1530 N. Woodward
at Long Lake Rd
647-5100

FARMINGTON HILLS

FRANKLIN
31000 Northcreek
at 11 Mile Rd
626-9100

TROY

6017 Rochester Rd
at Long Lake Rd
689-8900

ROCHESTER

120 W. University
at Main Street
651-8850

WEST BLOOMFIELD

2401 W. North Lake Rd
at 11 Mile Rd
851-8100

OPEN MONDAY-FRIDAY 9 A.M.-5 P.M. SATURDAY 9 A.M.-5 P.M. OPEN SUNDAYS

